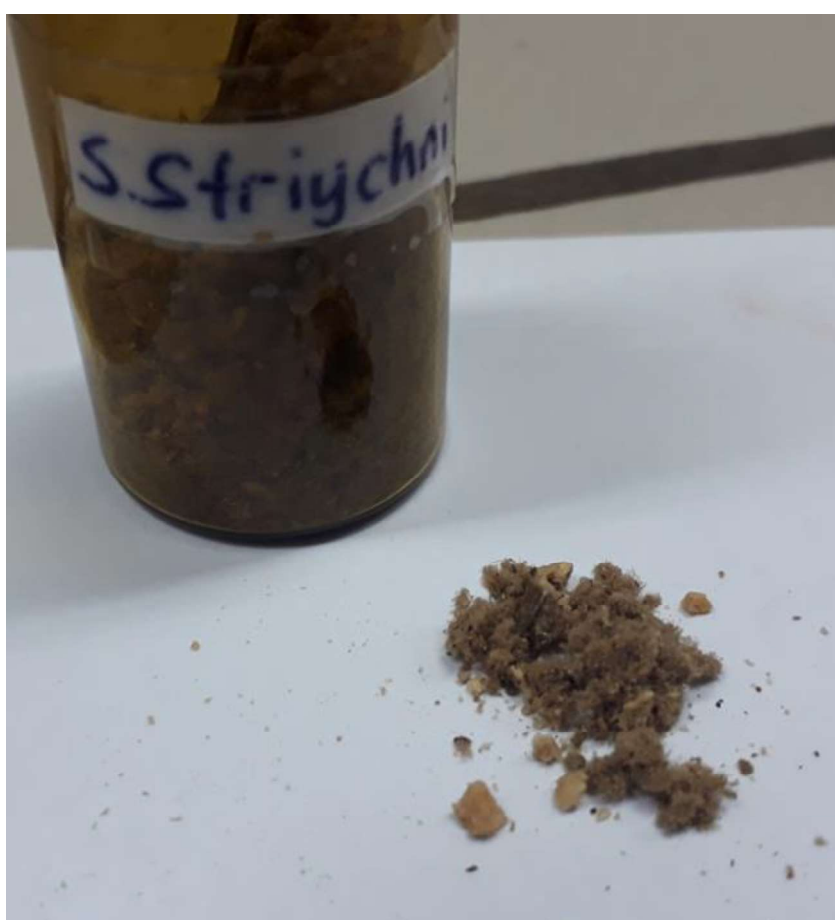


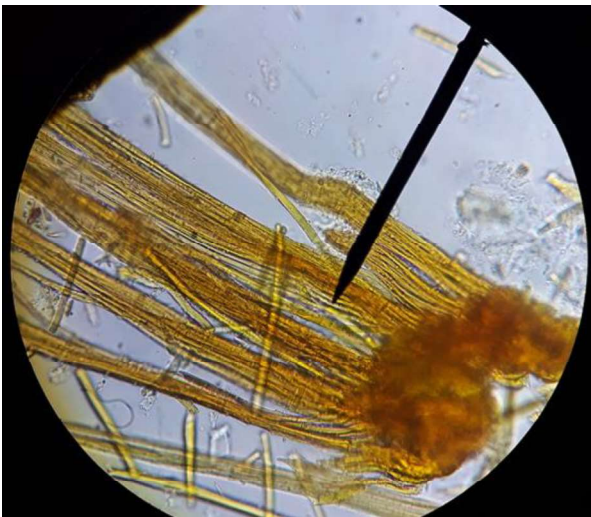
5- Semen Strychni



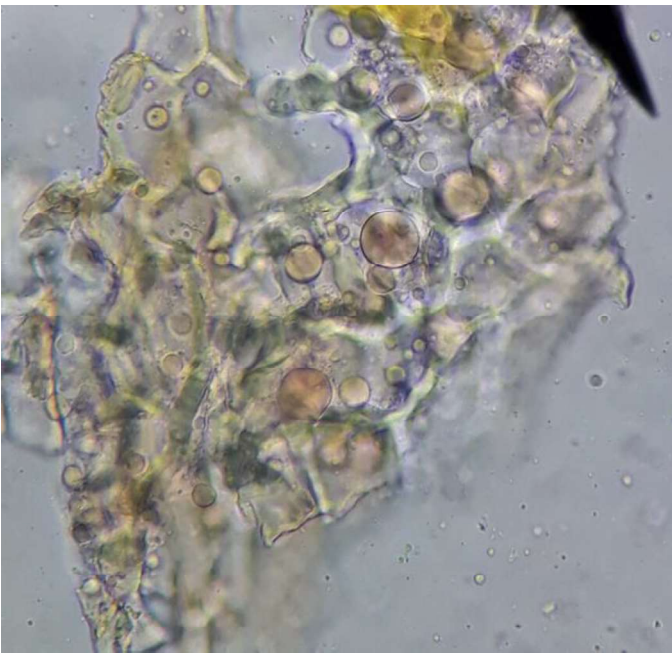
Semen Strychni (Loganiaceae)
PN: *Strychnos nux-vomica*

R= Sartur, 10x40

a) Testa epiderm that has been woody and feathery. (yellow-orange)



**b) Endosperma cells
containing plenty of oil
drops.**



6- Semen Coffeae



Semen Coffeae (Rubiaceae)

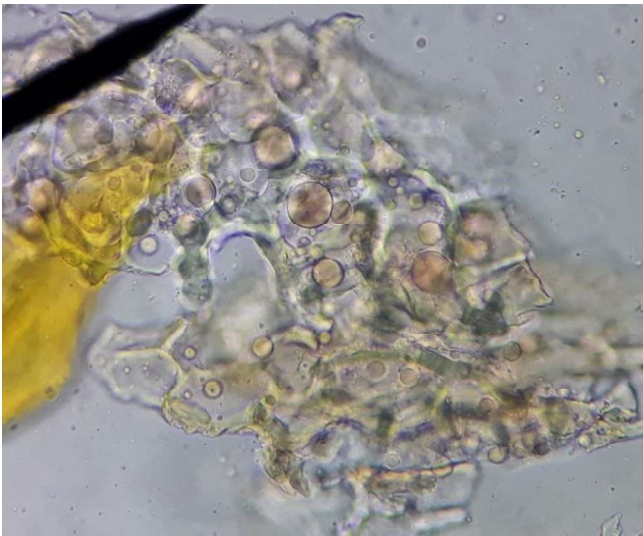
P.N: *Coffea arabica*

R= Sartur, 10x40

a) Sclerenchyma fibers in endocarp



b) Endosperma cells containing oil drops



7- Folia Boldo

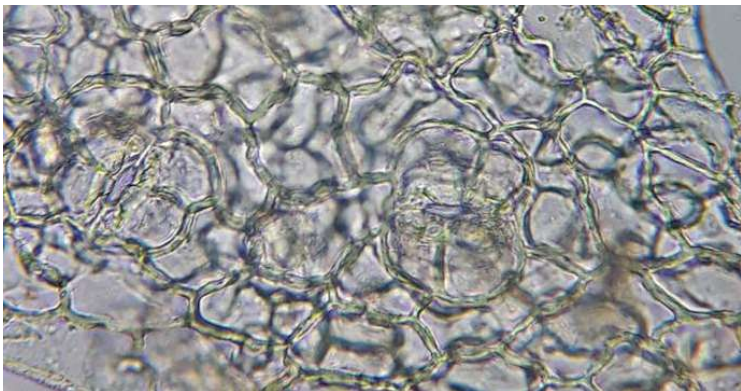


Folia Boldo (Monimiaceae)

PN: *Peumus boldus*

R= Chloralhydrate, 10x40

a) Stoma and adjacent cells*

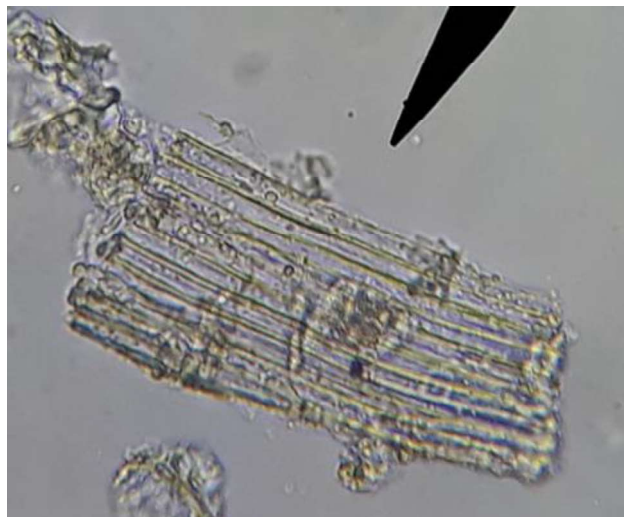


Paracitic Type (Parallel Cell) Stoma: Two adjacent cells parallel to the stoma axis.

b) Bunch villus



c) Sclerenchyma bundle



8- Folia Theae



Folia Theae (Theaceae)

PN: *Camellia sinensis*

R= Sartur, 10x40

a) Idioblast (Sleeved stone cells):

*Stone cells; The walls are thickened cells with lignin accumulation. Stone cells can be present individually or in groups between parenchyma. Prolonged sleeve stone cells whose walls may have different thicknesses are called idioblast.



**b) Single cell and
wooded trichome**



c) Cluster-crystals of Ca-oxalate (druz) at parenchyma

