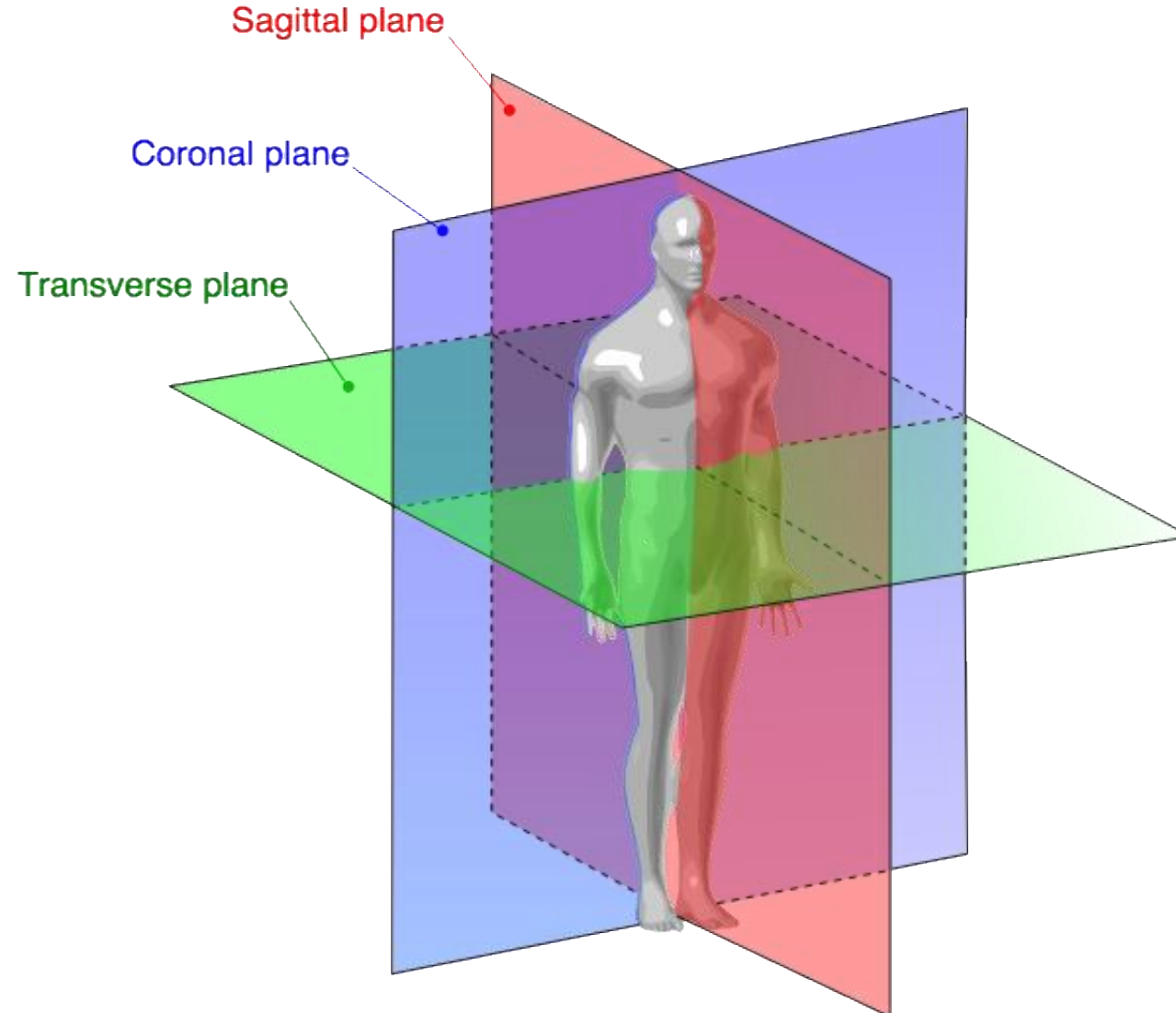
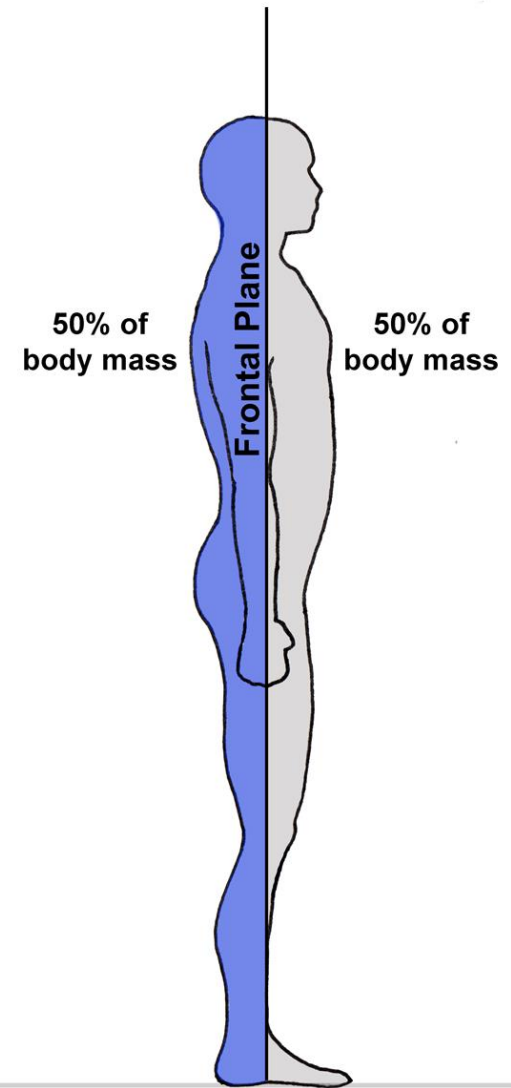
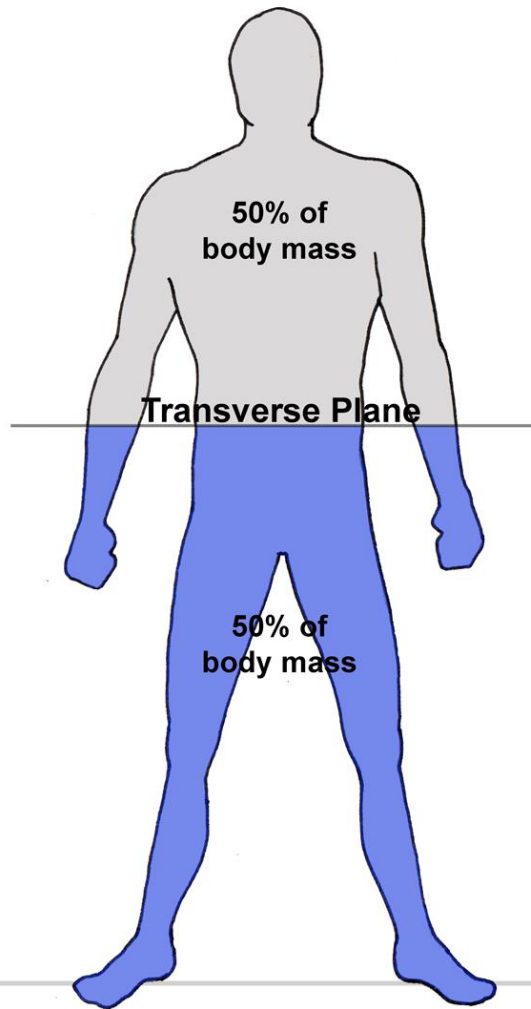
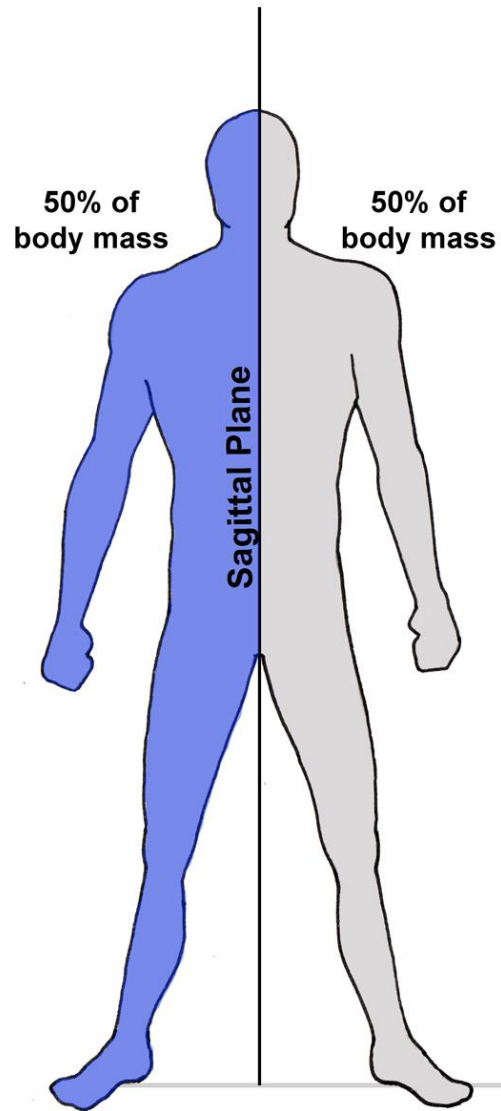
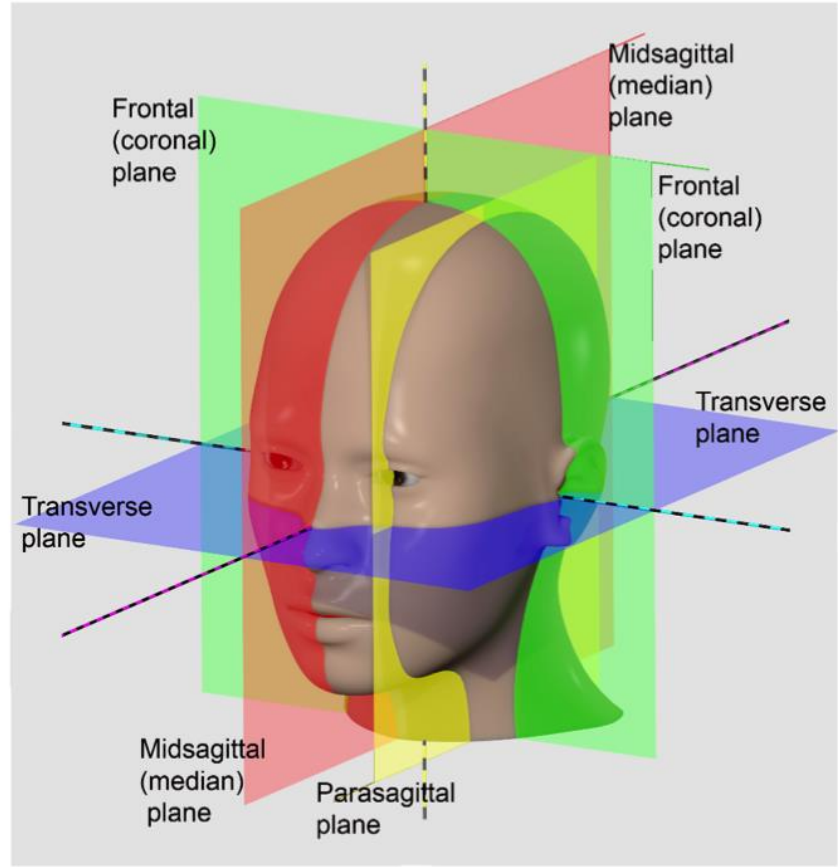


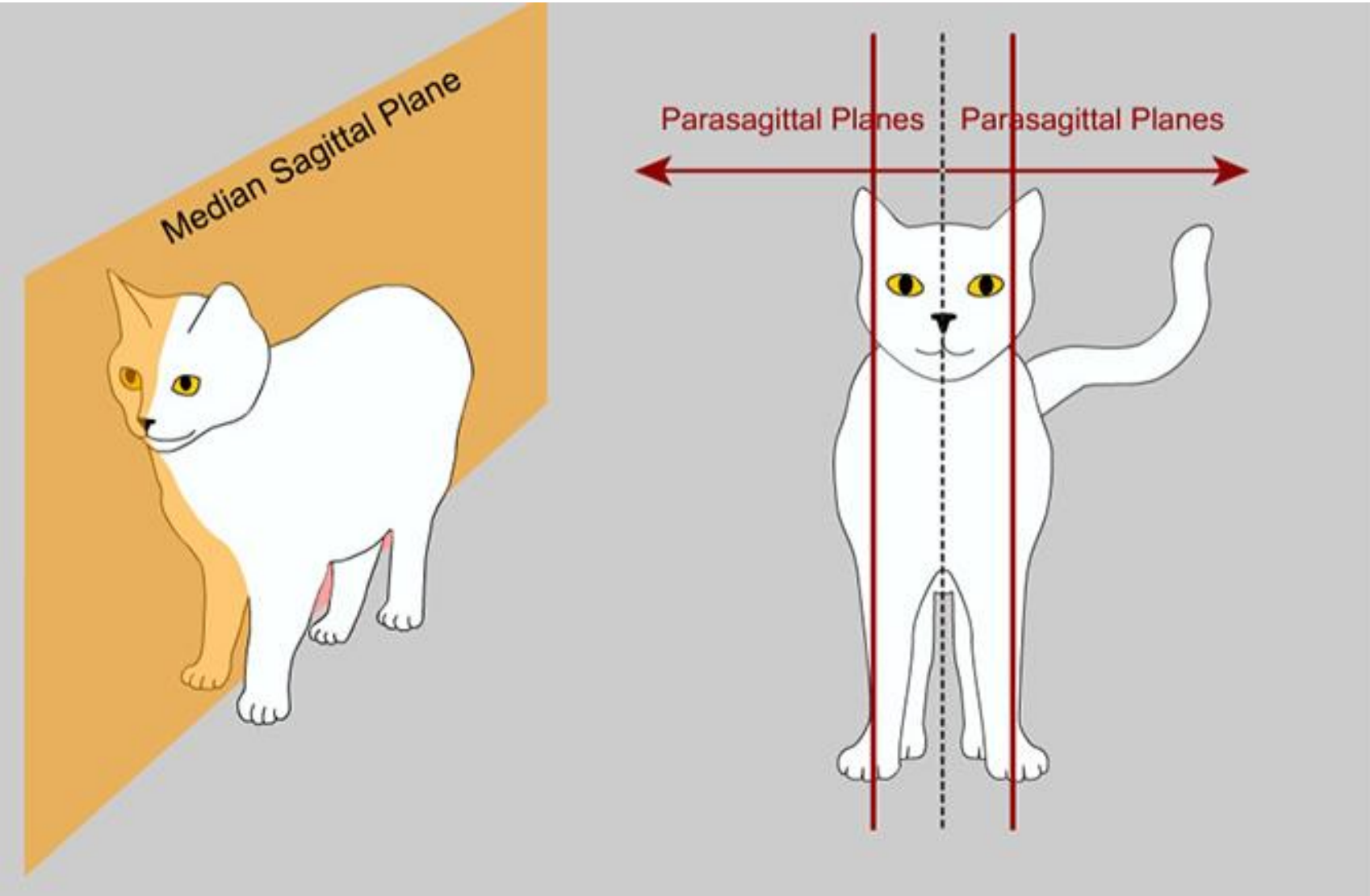
Kinezyoloji 2

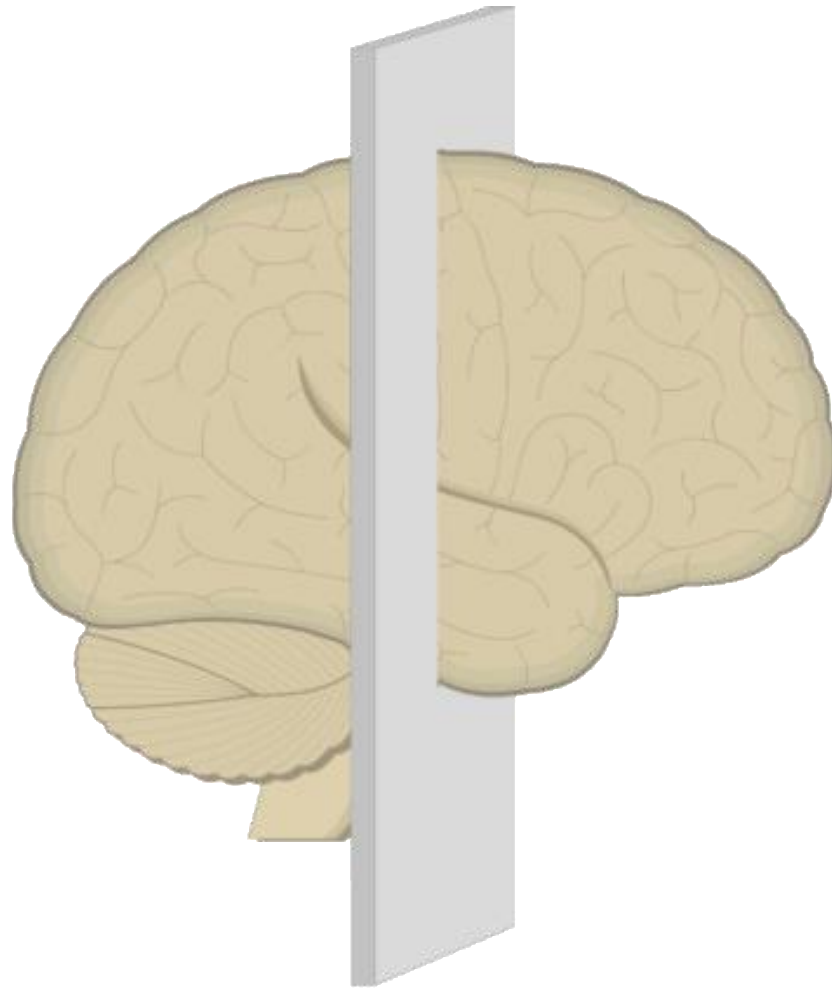
Vücutun Referans Düzlemleri



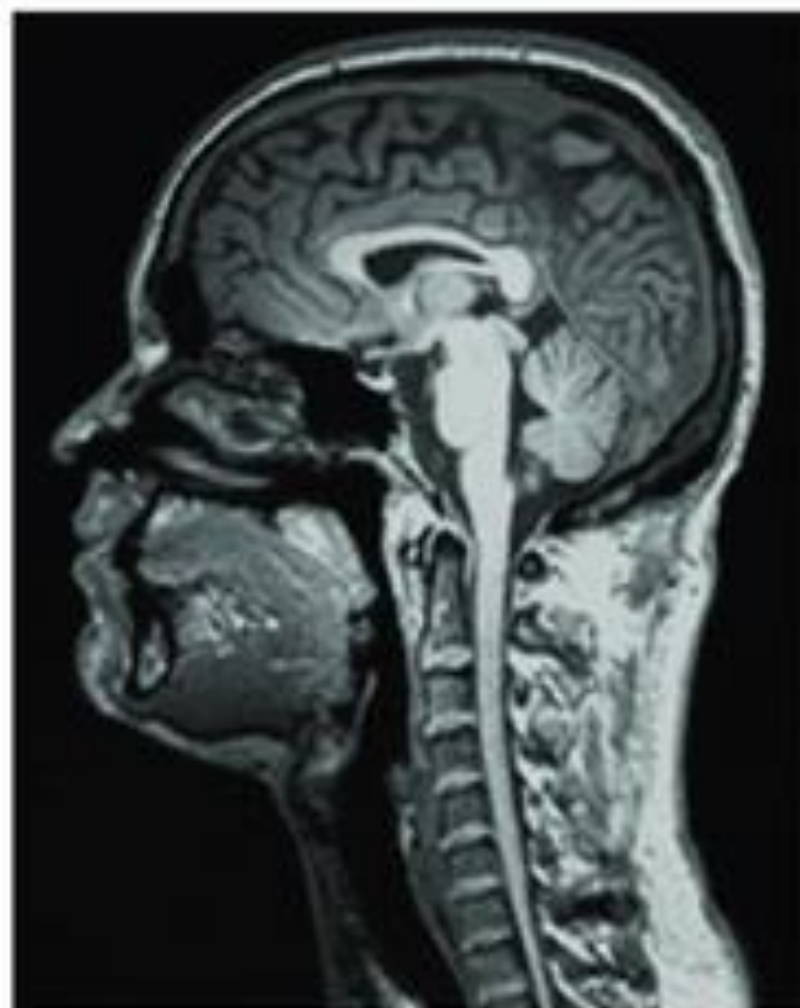
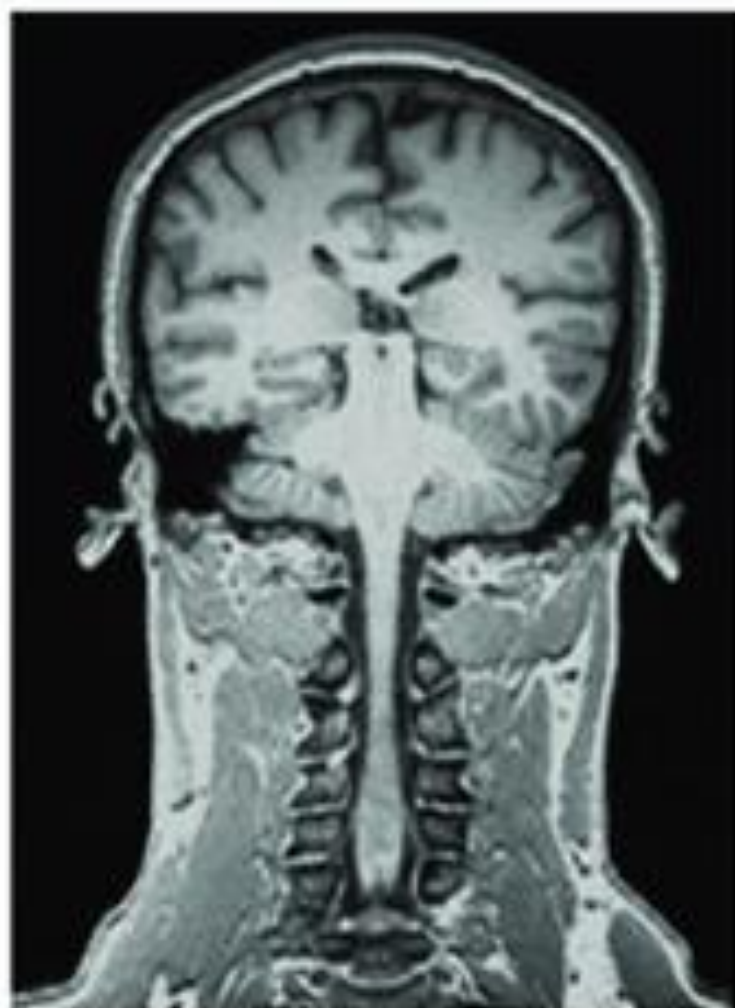
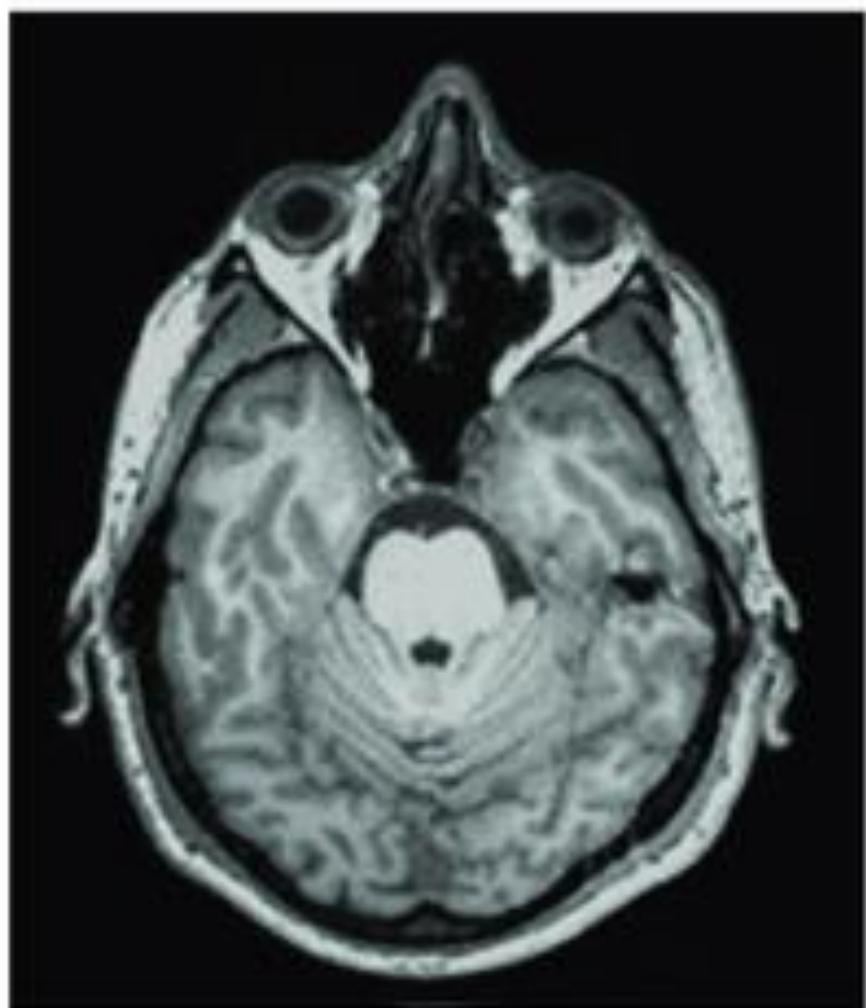








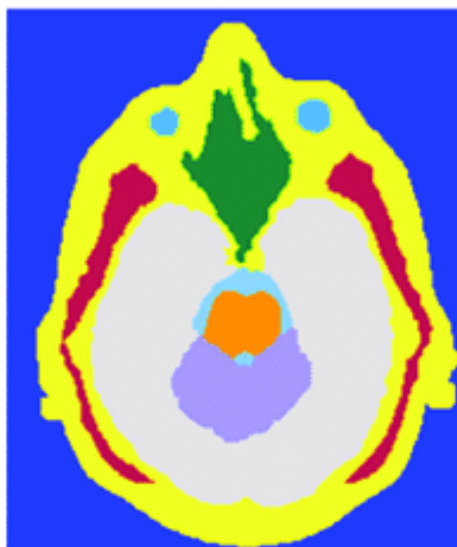
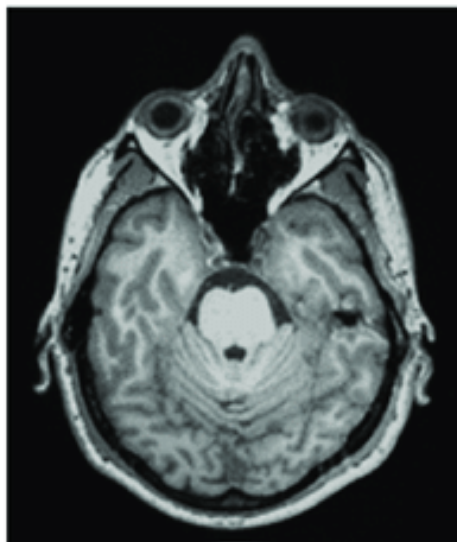
Divides brain into front and back regions



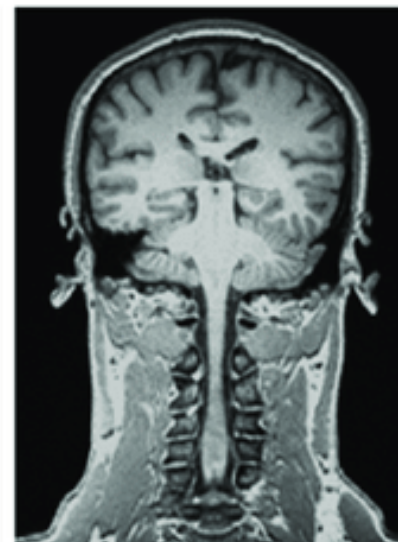
Tissues Legend

- Air
- Brainstem
- Brain
- Cerebrospinal Fluid
- Cerebellum
- Eyes
- Muscle
- Fat, Bone, Skin

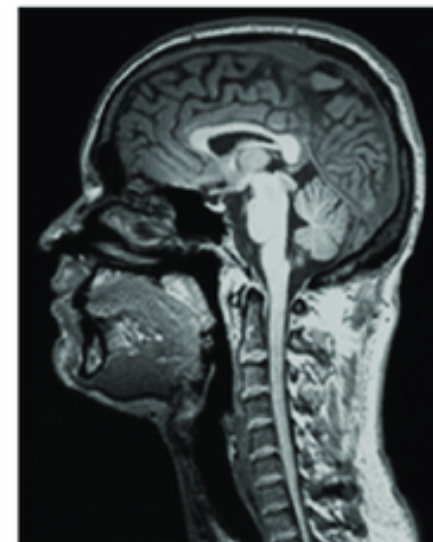
Axial

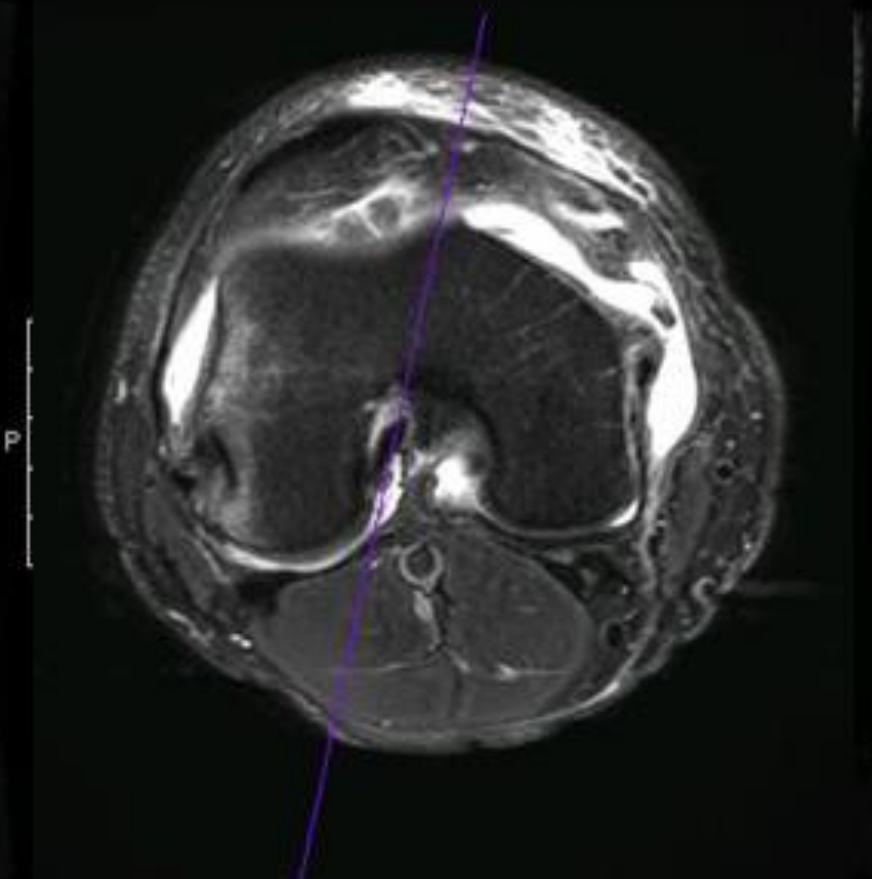
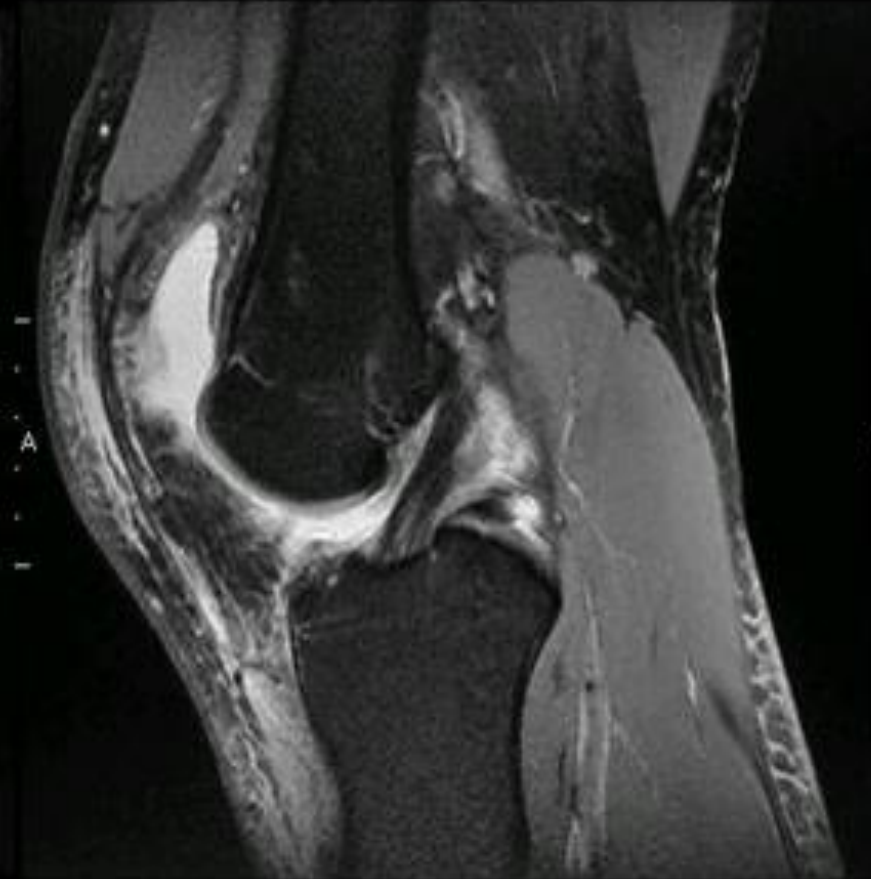
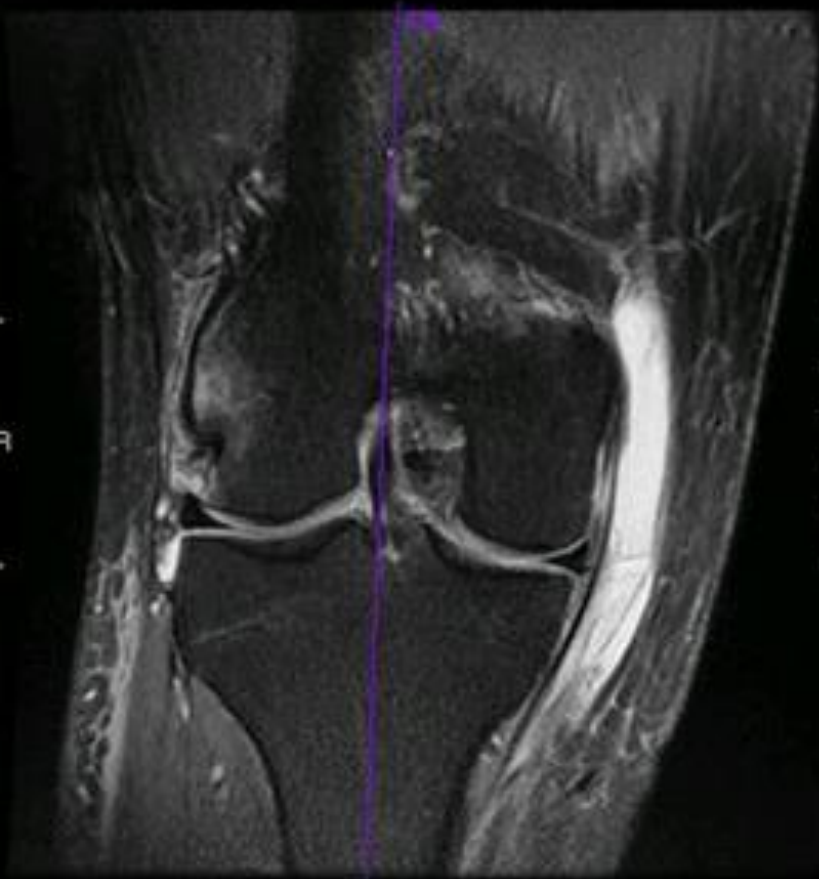


Coronal

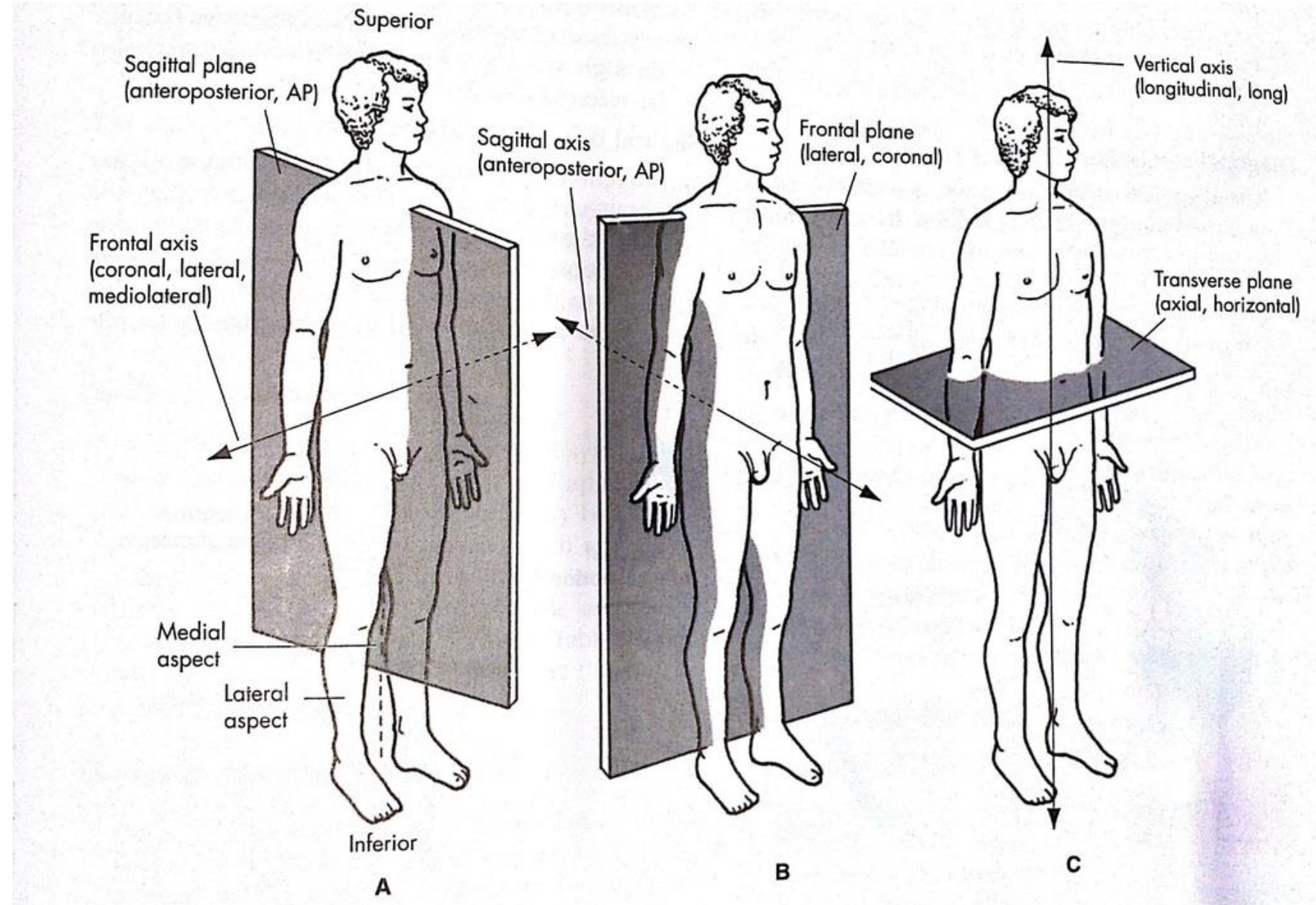


Sagittal

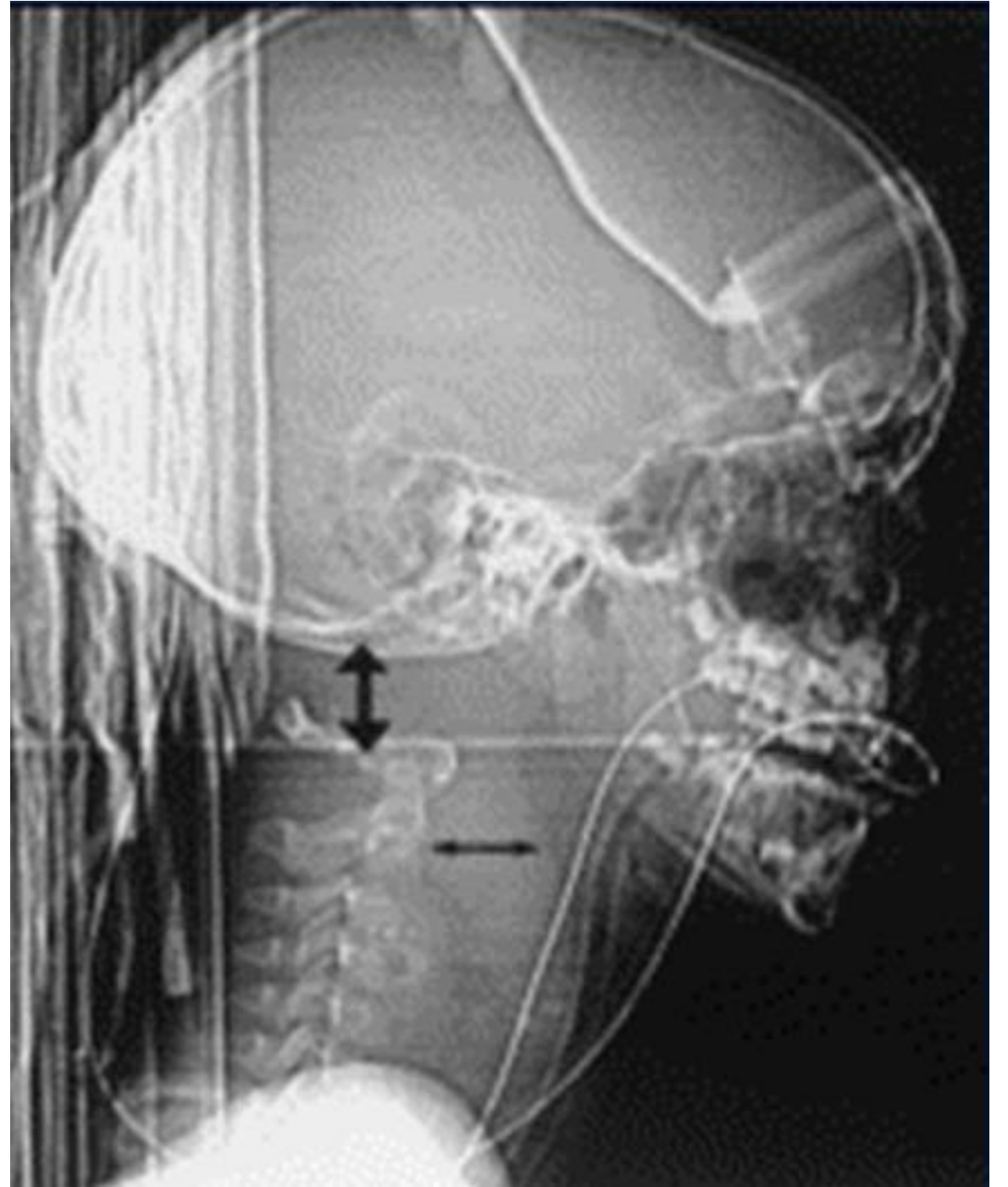




Eksenler



- Normal Postür
- Askeri Postür



Tibial coordinate system

ty: superior

tx = ty x ~tz: anterior

tz = tx x ty: medial



Sagittal-Oblique



Axial