

Hareketler

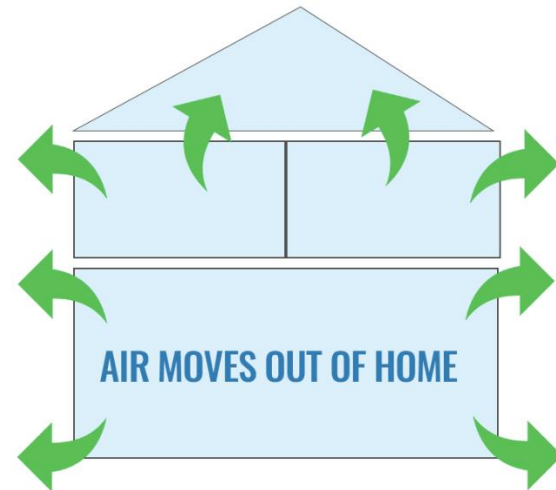
- 1-Kayma (Gliding)
 - Noktasal Kayma
 - Yüzeysel Kayma
- 2-Sallanma (Rocking)
- 3-Aksiyal rotasyon

Atmosfer basıncı

Positive Air Pressure

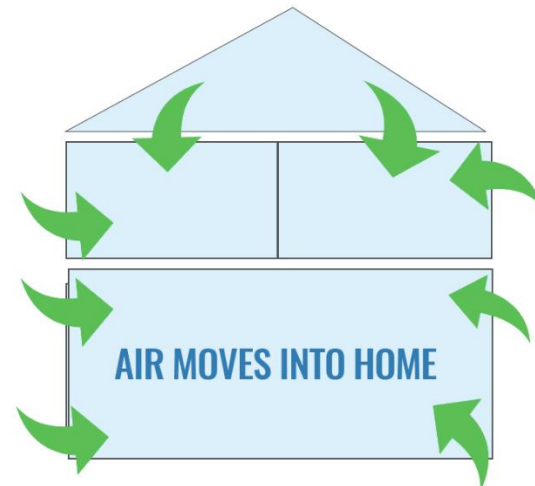


- Your air pressure inside is **greater** than pressure outside
- Air gets pushed into walls and insulation

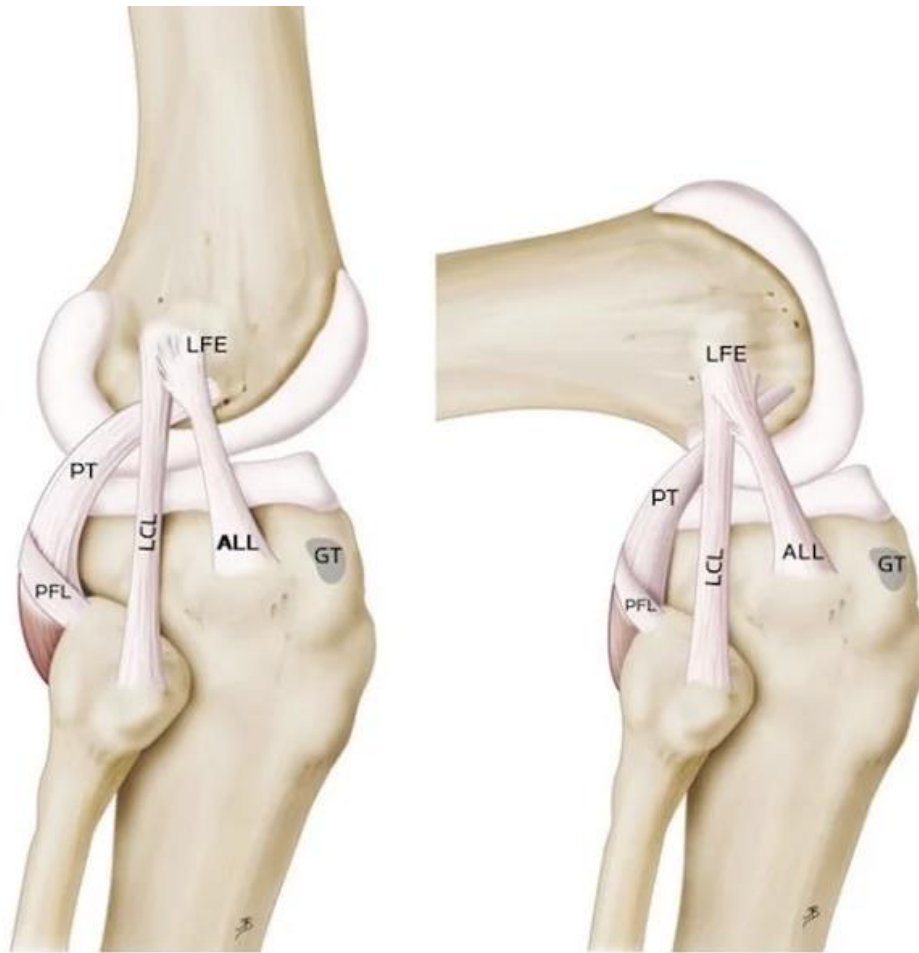


Negative Air Pressure

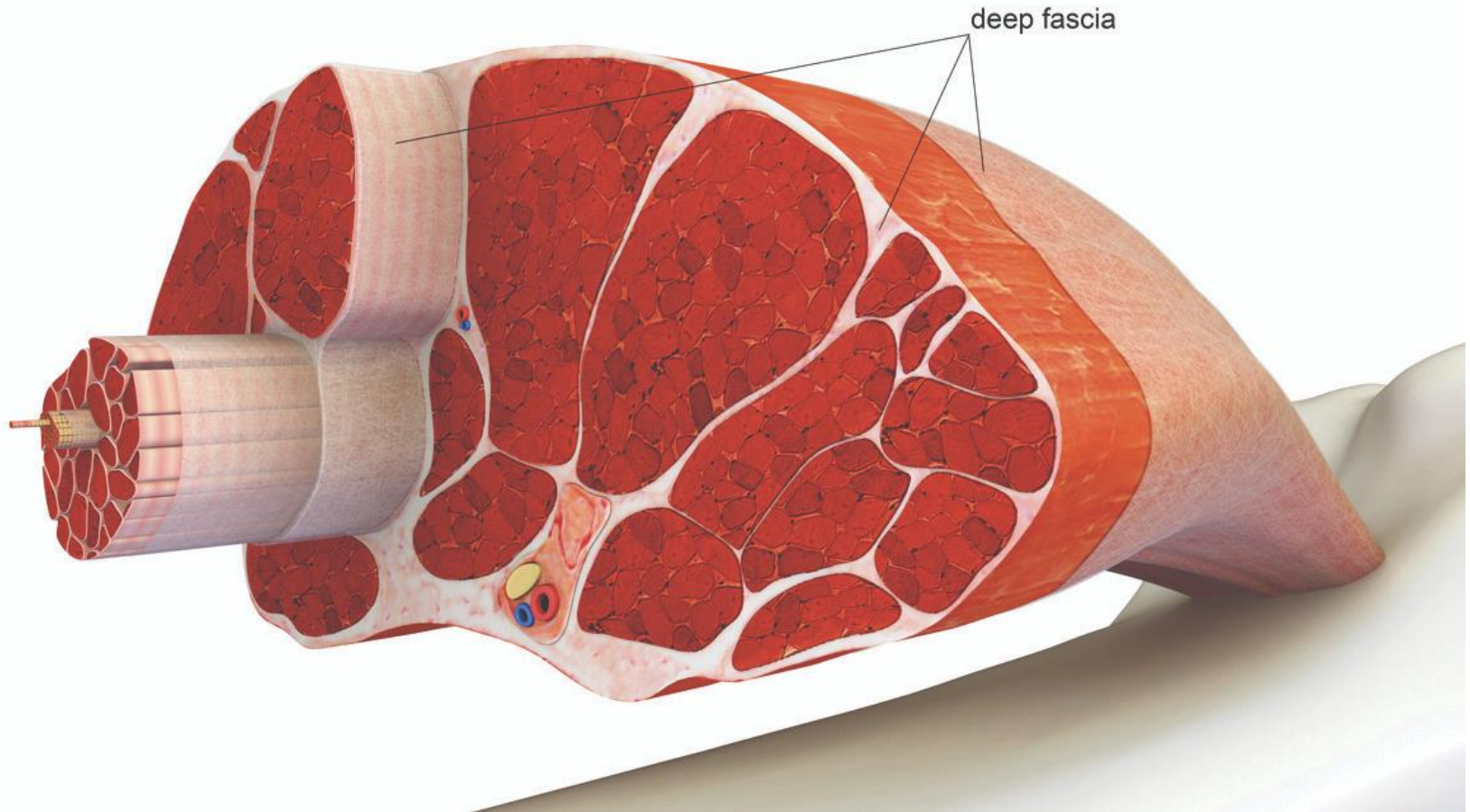
- When indoor air pressure is **lower** than pressure outside
- **Outside air rushes in** to try and balance out the pressure difference



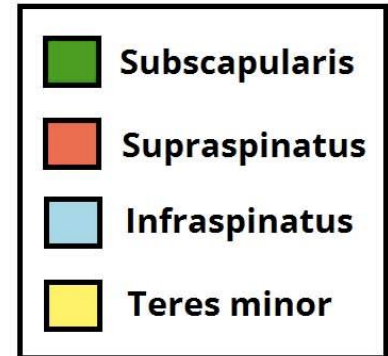
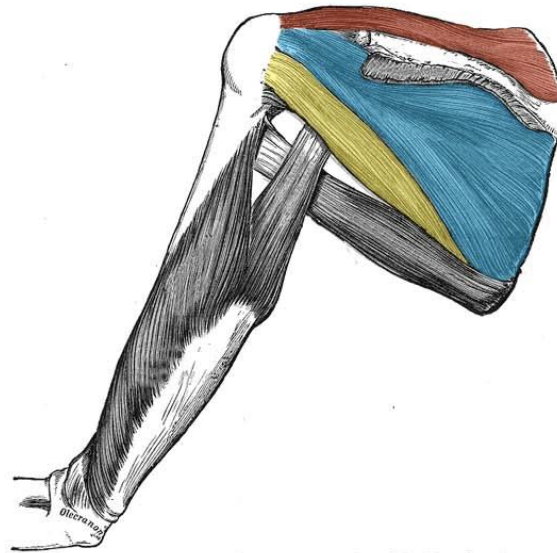
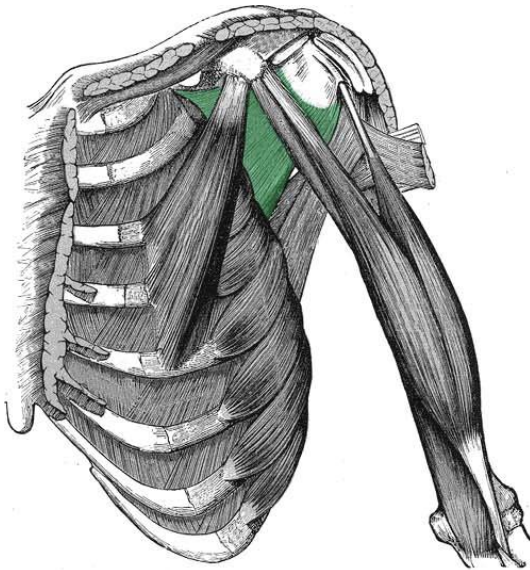
Ligament



Fascia



Kas



Kapsül

- **Eklemler kapsülü;** bağ dokusundan oluşan periferik bir perdedir. Artiküler kapsül histolojik olarak iki farklı tabakadan meydana gelir

Stres

- Kompresyon
 - Bir cisme dik uygulanan kuvvet
- Gerilim
 - Kompresyonun tersi. Zıt yönde aynı hizada
- Makaslama
 - Aynı düzlemde ama aynı hizada olmayan
- Bükme
 - Gerilme (konveks), kompresyon (konkav), makaslama
- Torsiyonel Kuvvet
 - Rotasyonel kuvvet