

# Pratik Uygulama

## Bađ Dokusu H¼cre ve Lifleri

Doç. Dr. Sinan Özkavukcu

# Bağ Dokusu Hücreleri

## Sabit bağ dokusu hücreleri

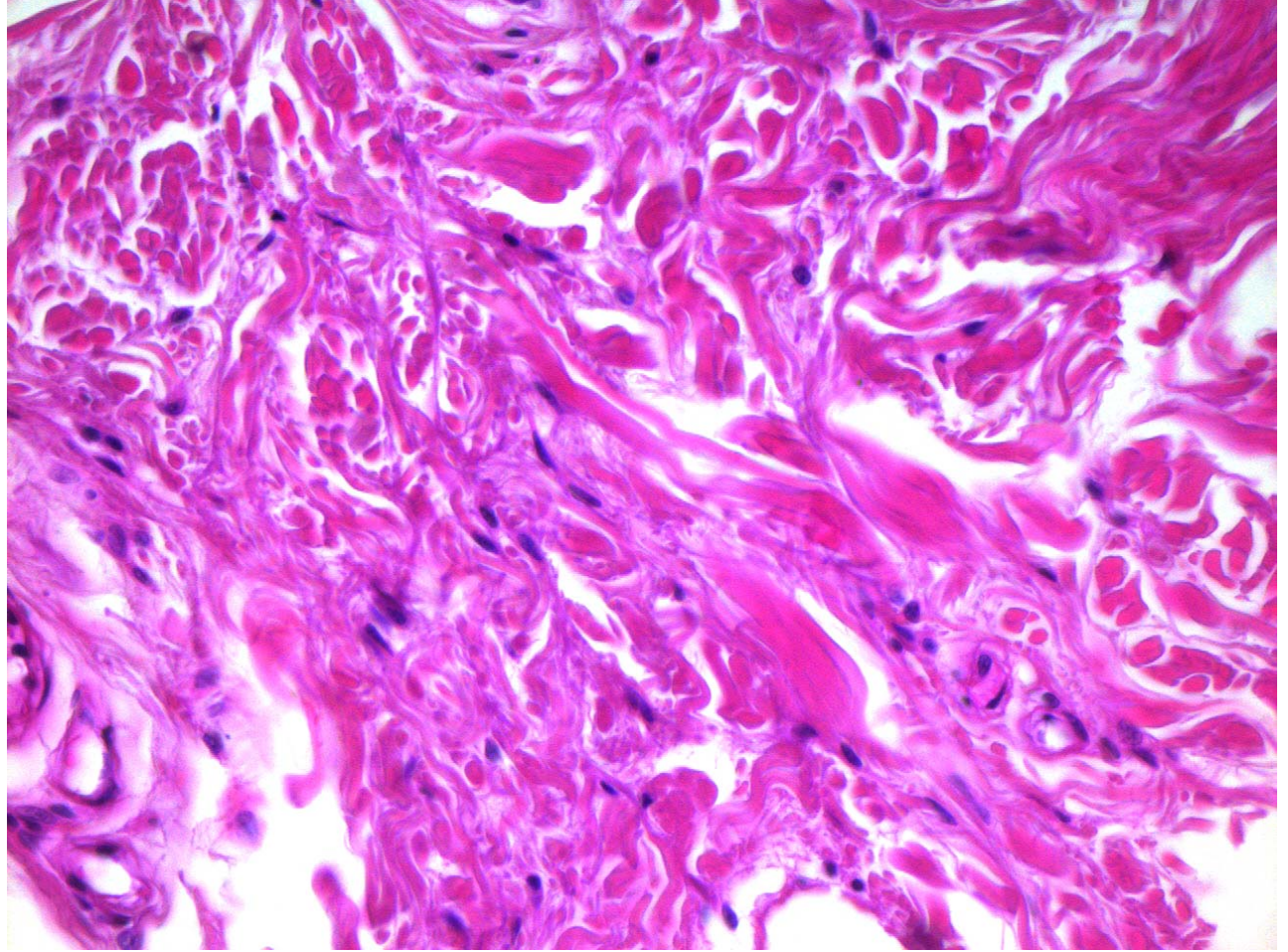
- Fibroblastlar ve ilgili hücreler olan miyofibroblastlar,
- Makrofajlar,
- Adipozitler,
- Mast hücreleri
- Yetişkin kök hücreler

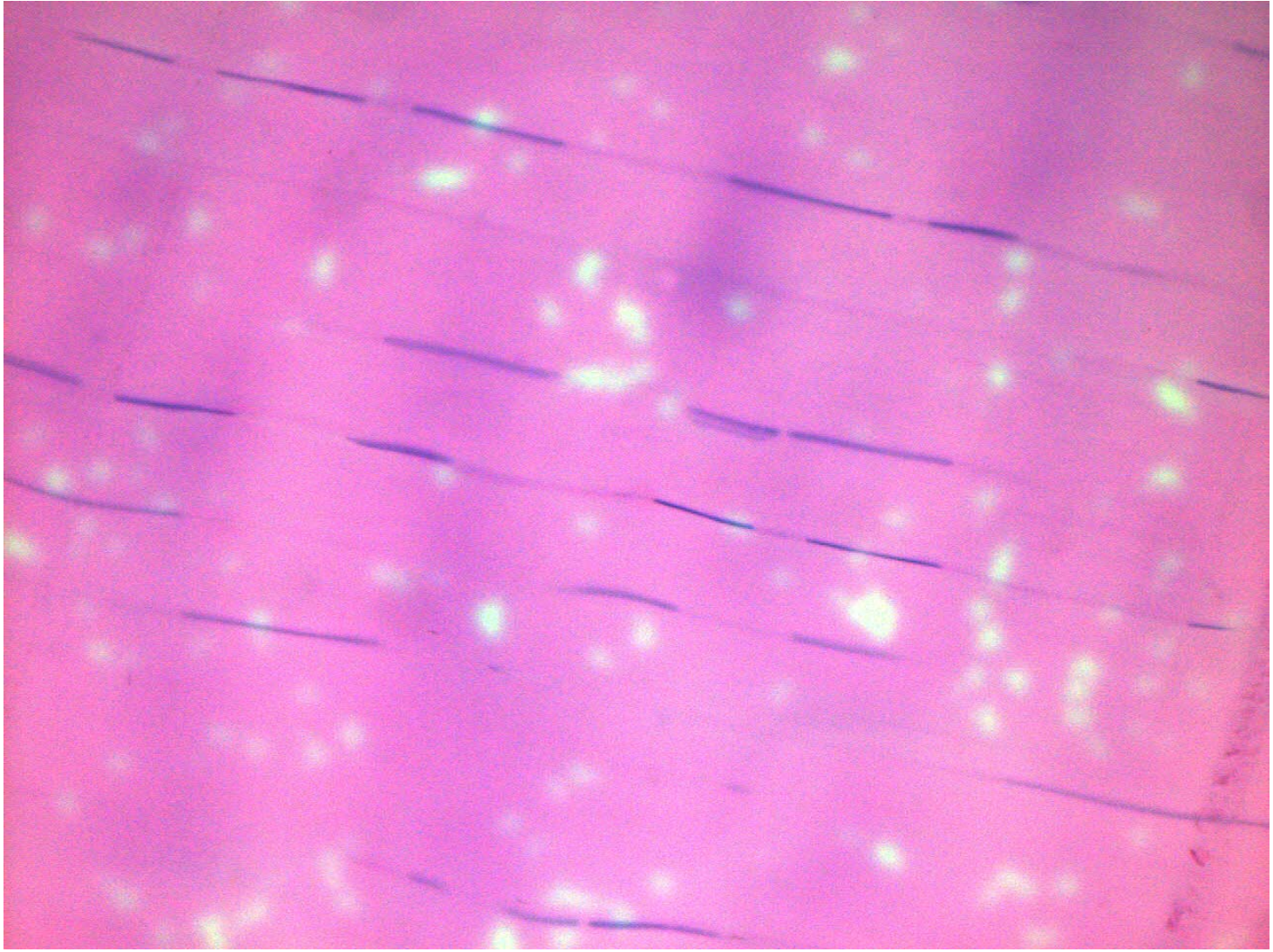
## Geçici/değişken bağ dokusu hücreleri

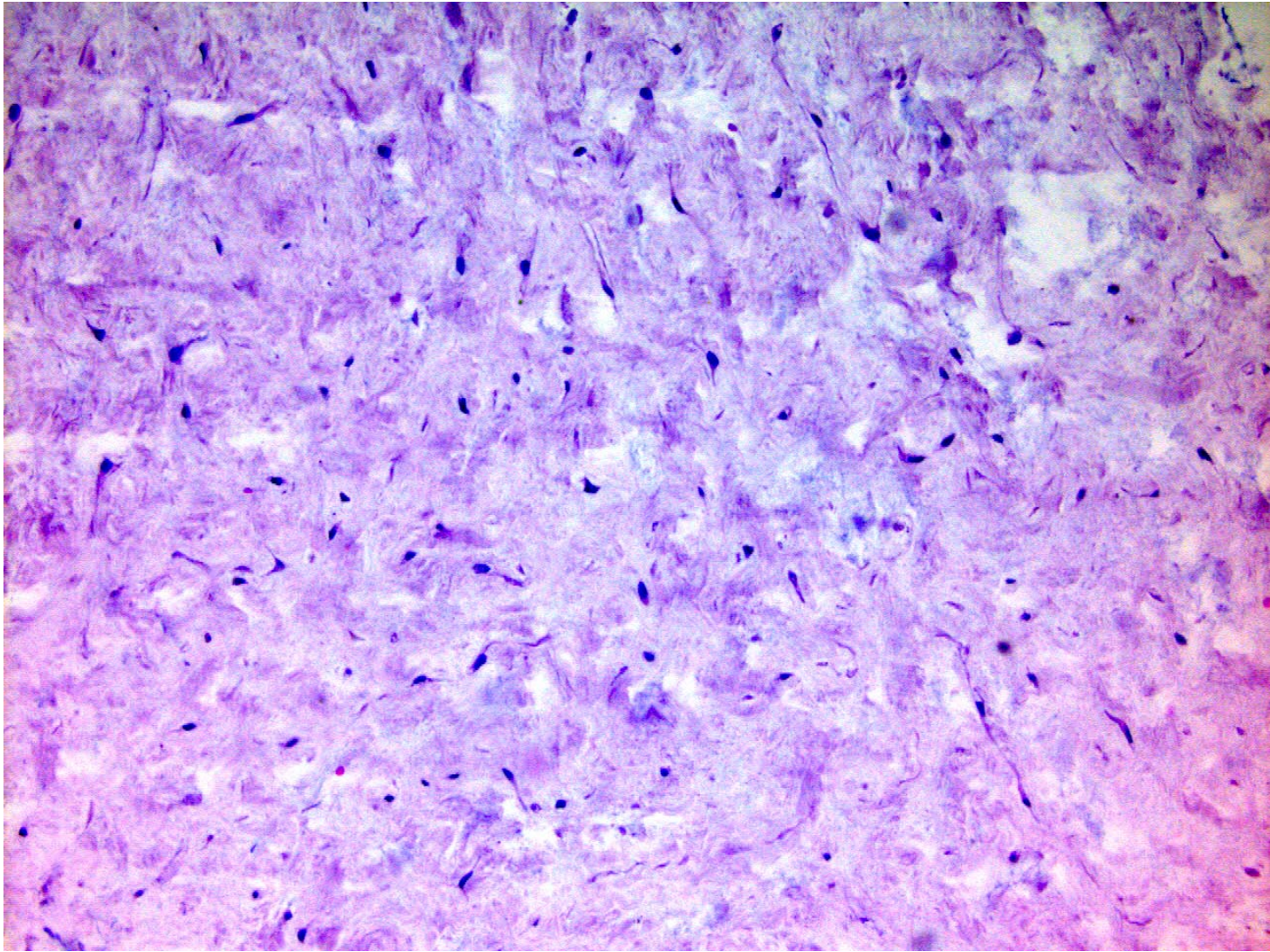
- Lenfositler
- Plazma hücreleri,
- Nötrofiller,
- Eozinofiller,
- Bazofiller
- Monositler

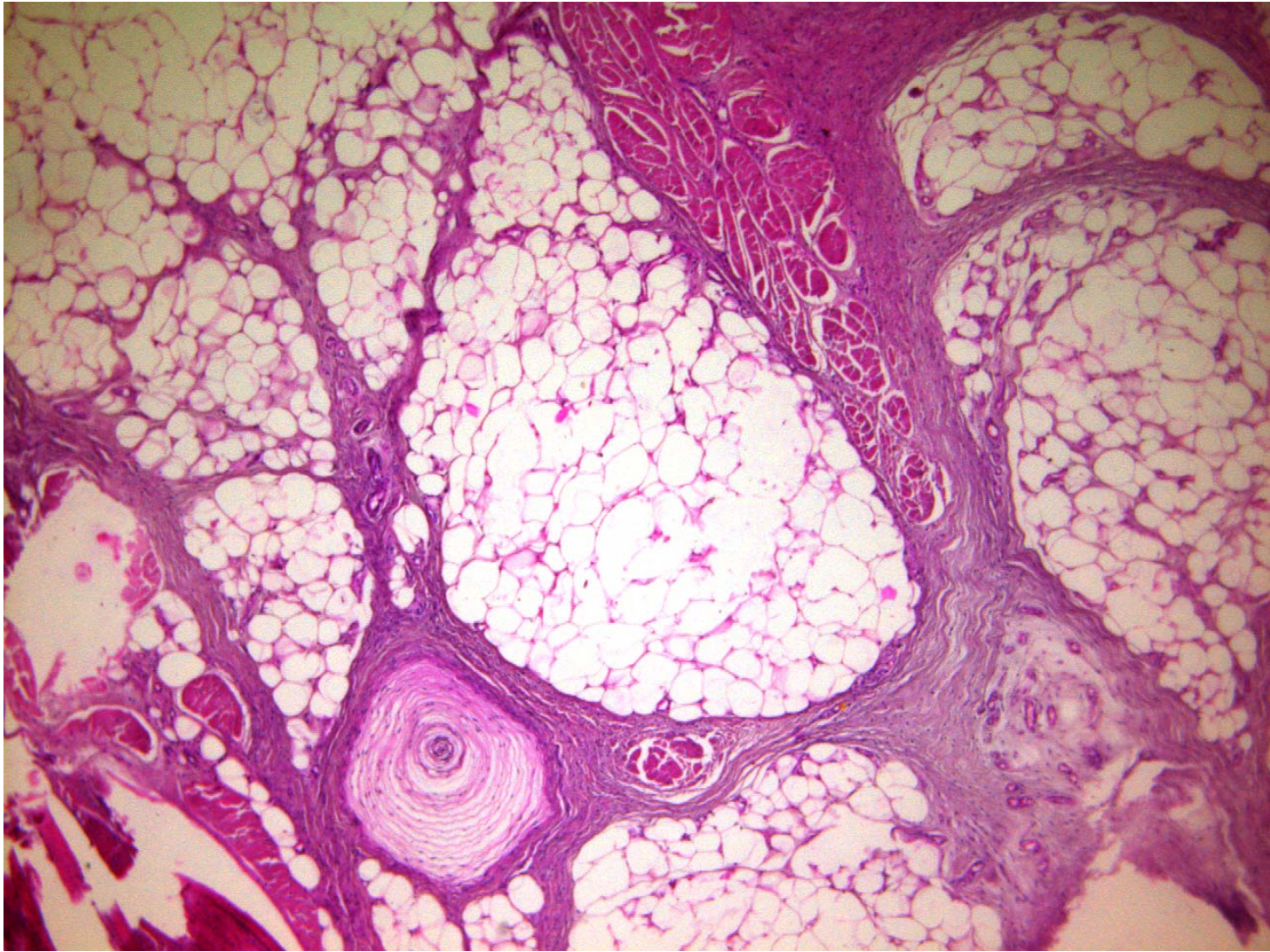
Stimulus ile kandan göç eden hücreler

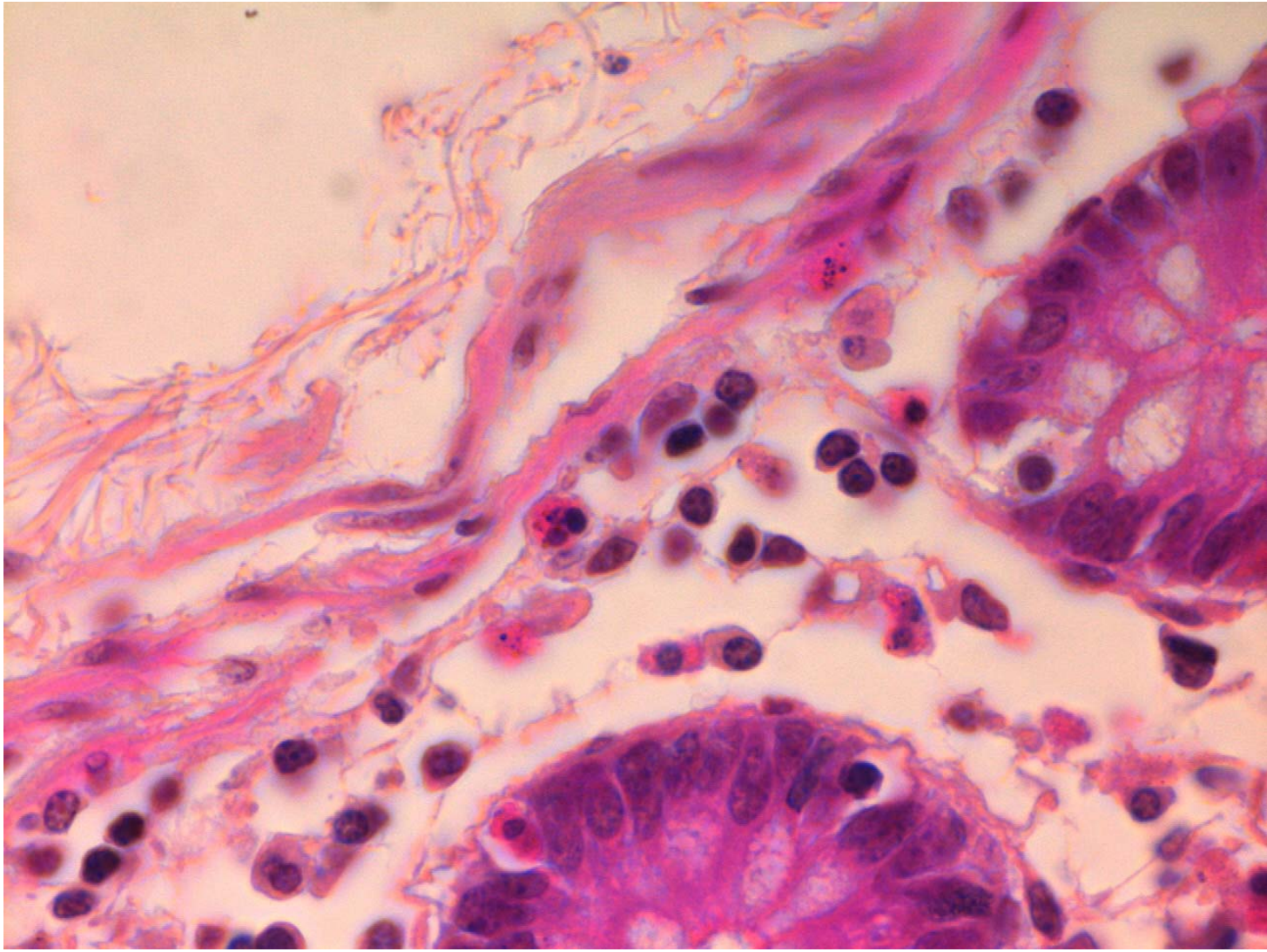
# Bağ Dokusu Hücreleri

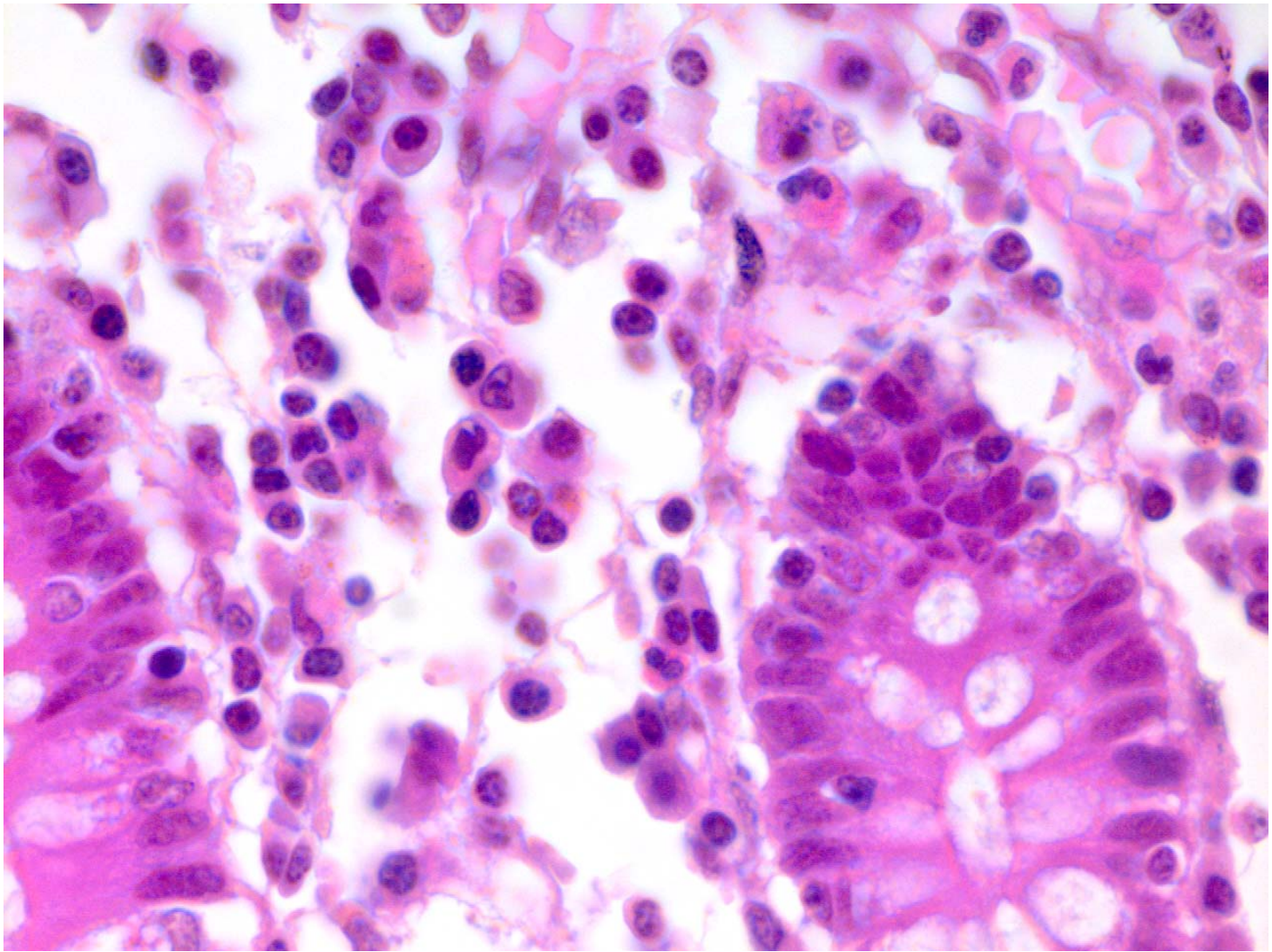




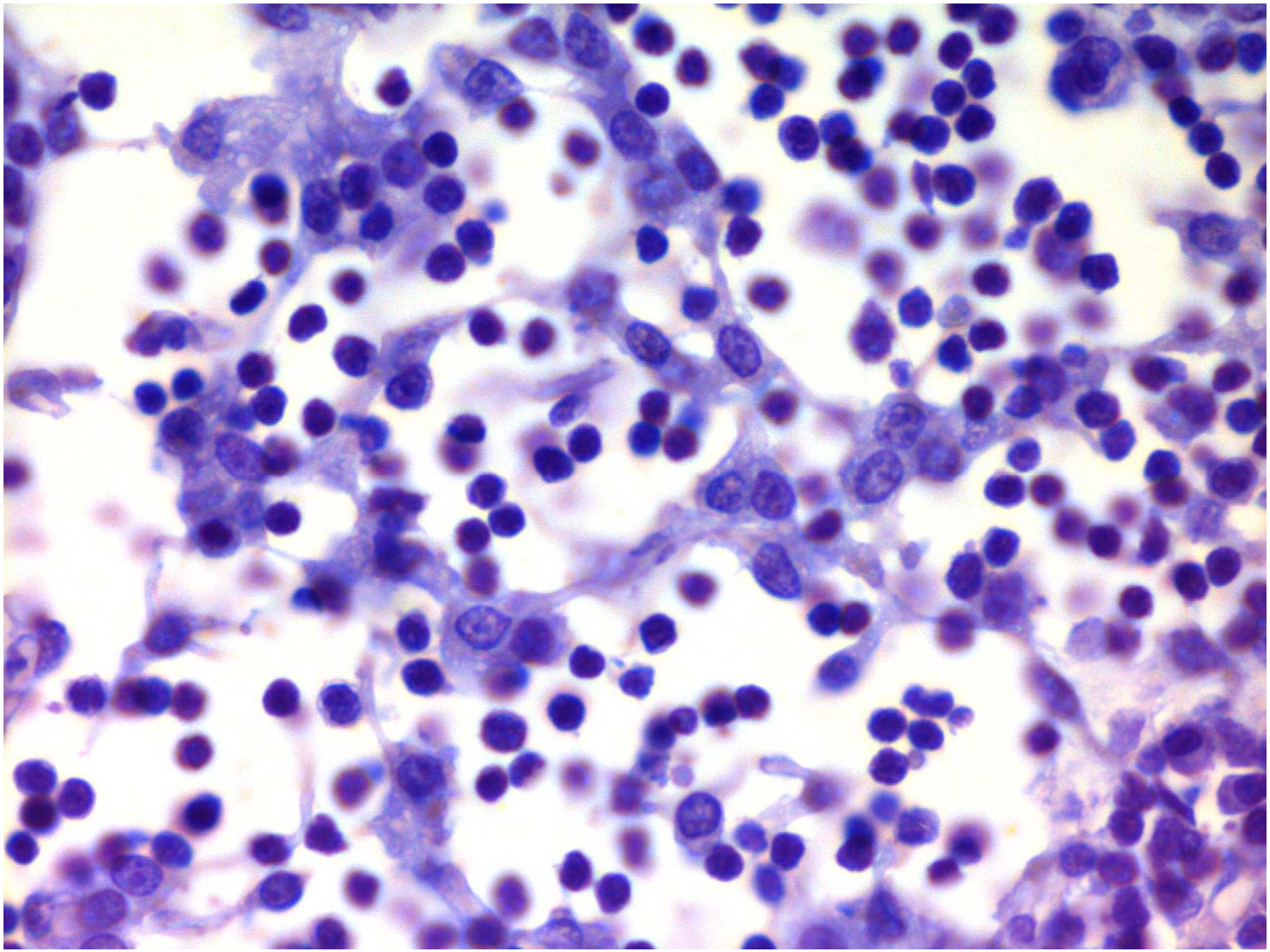


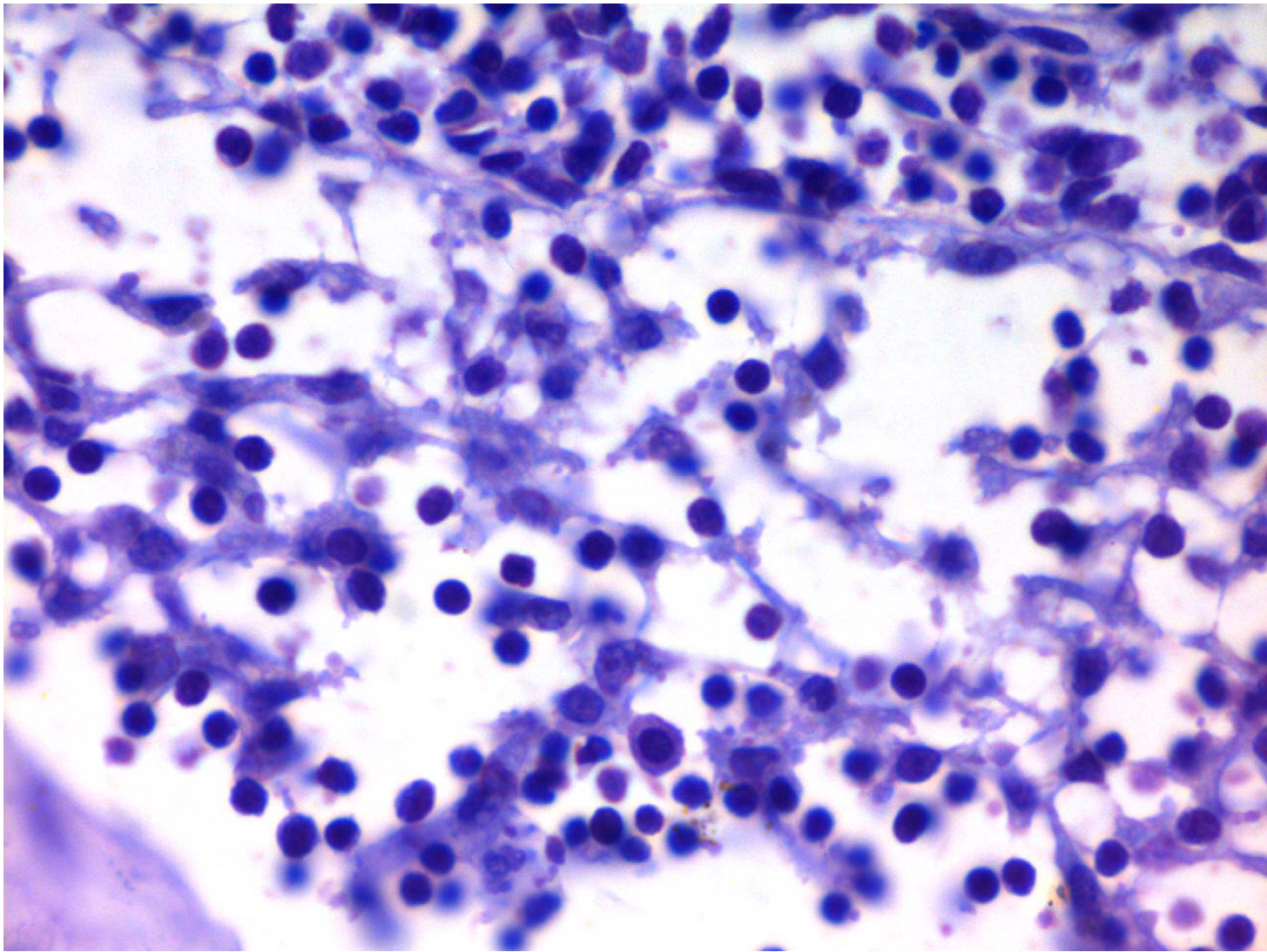


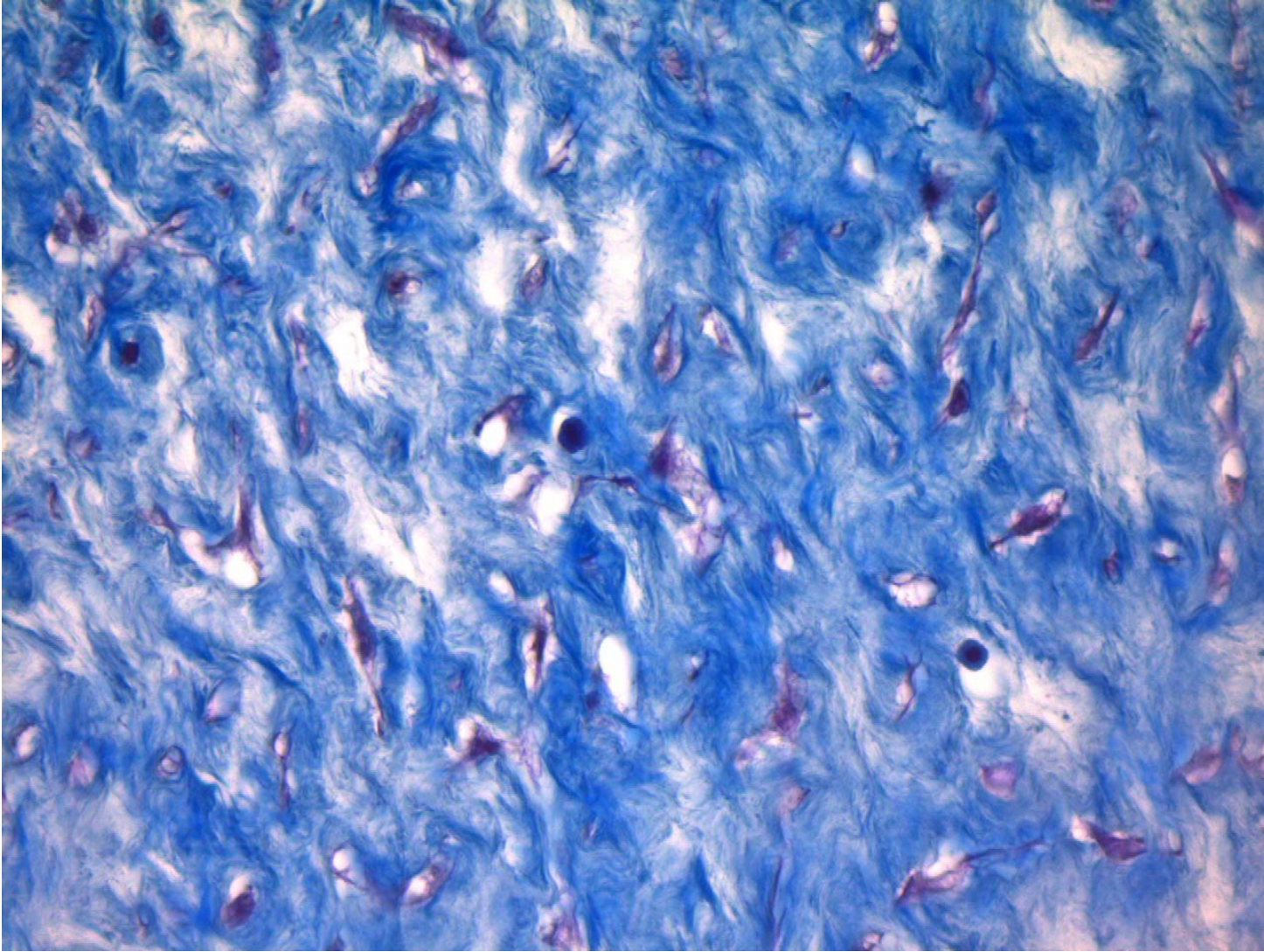






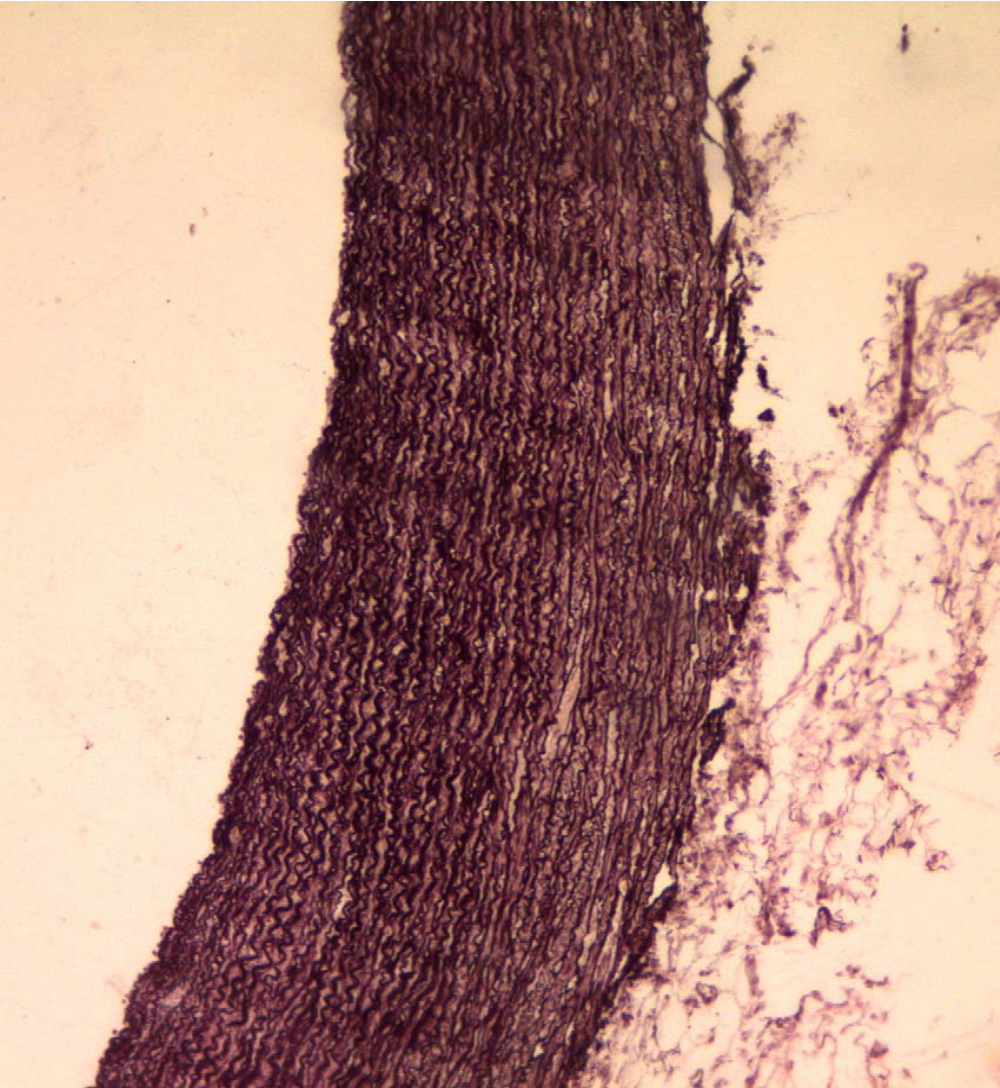


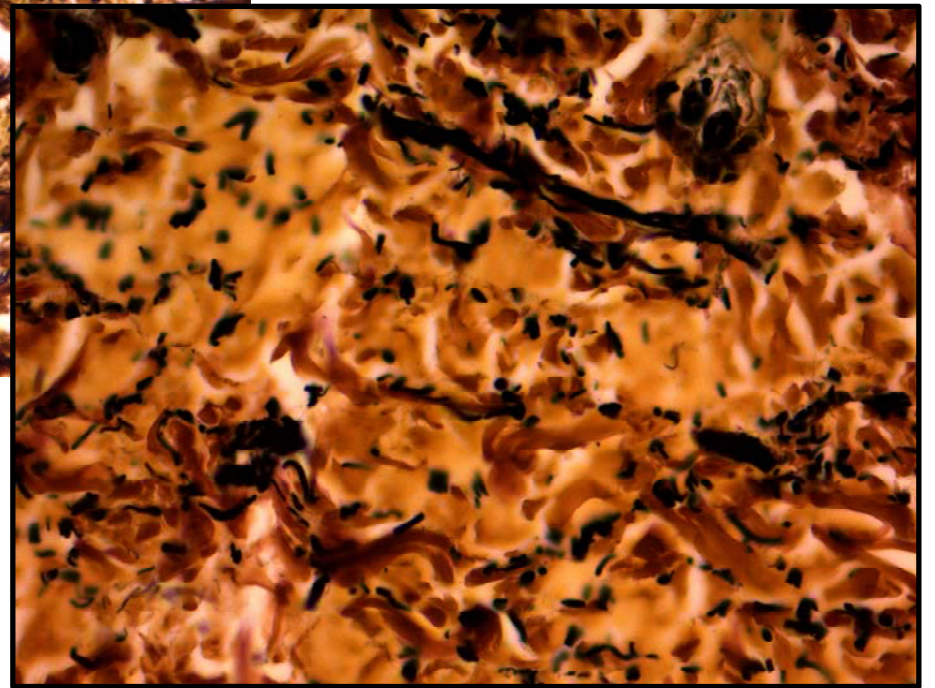
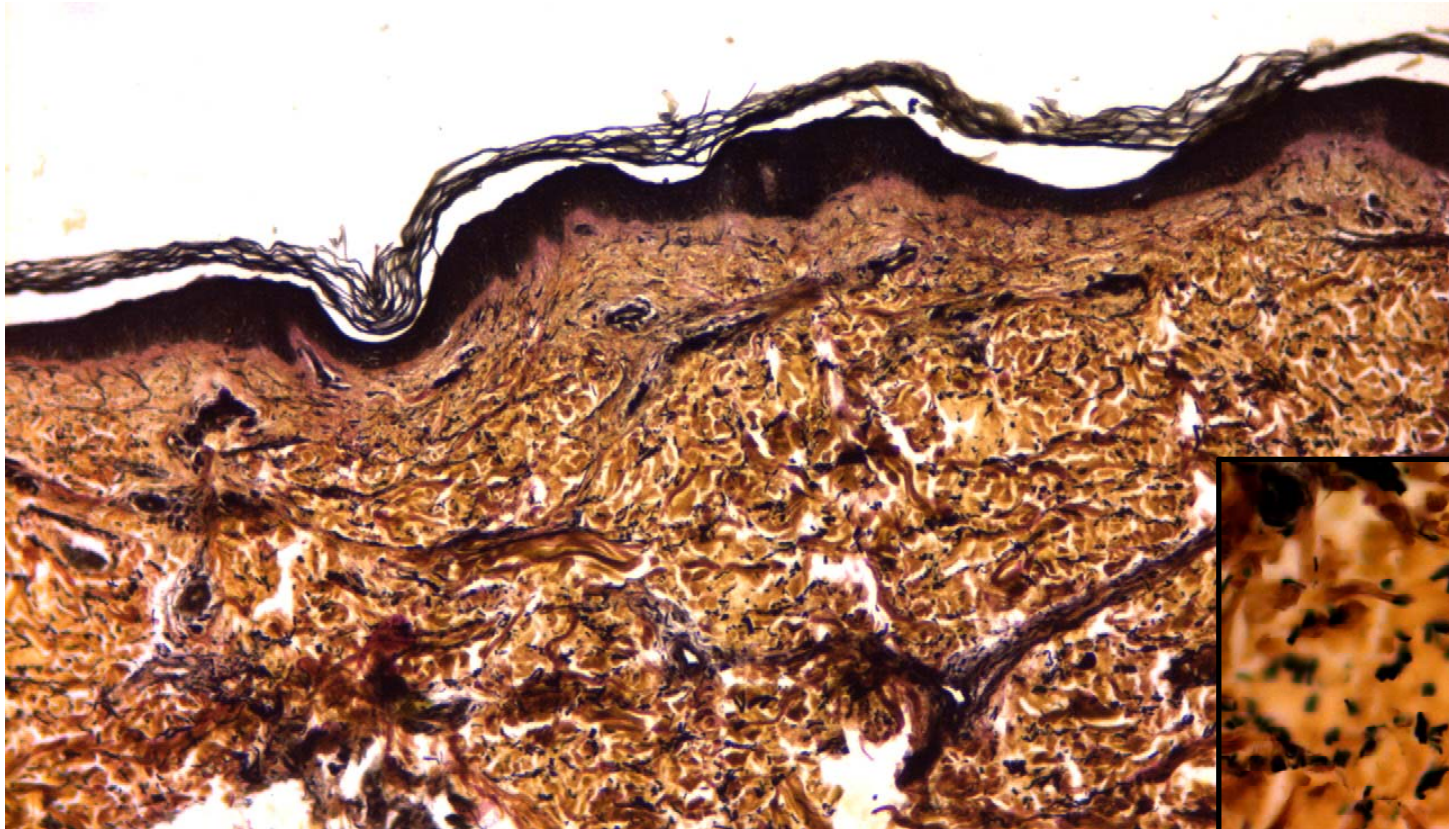




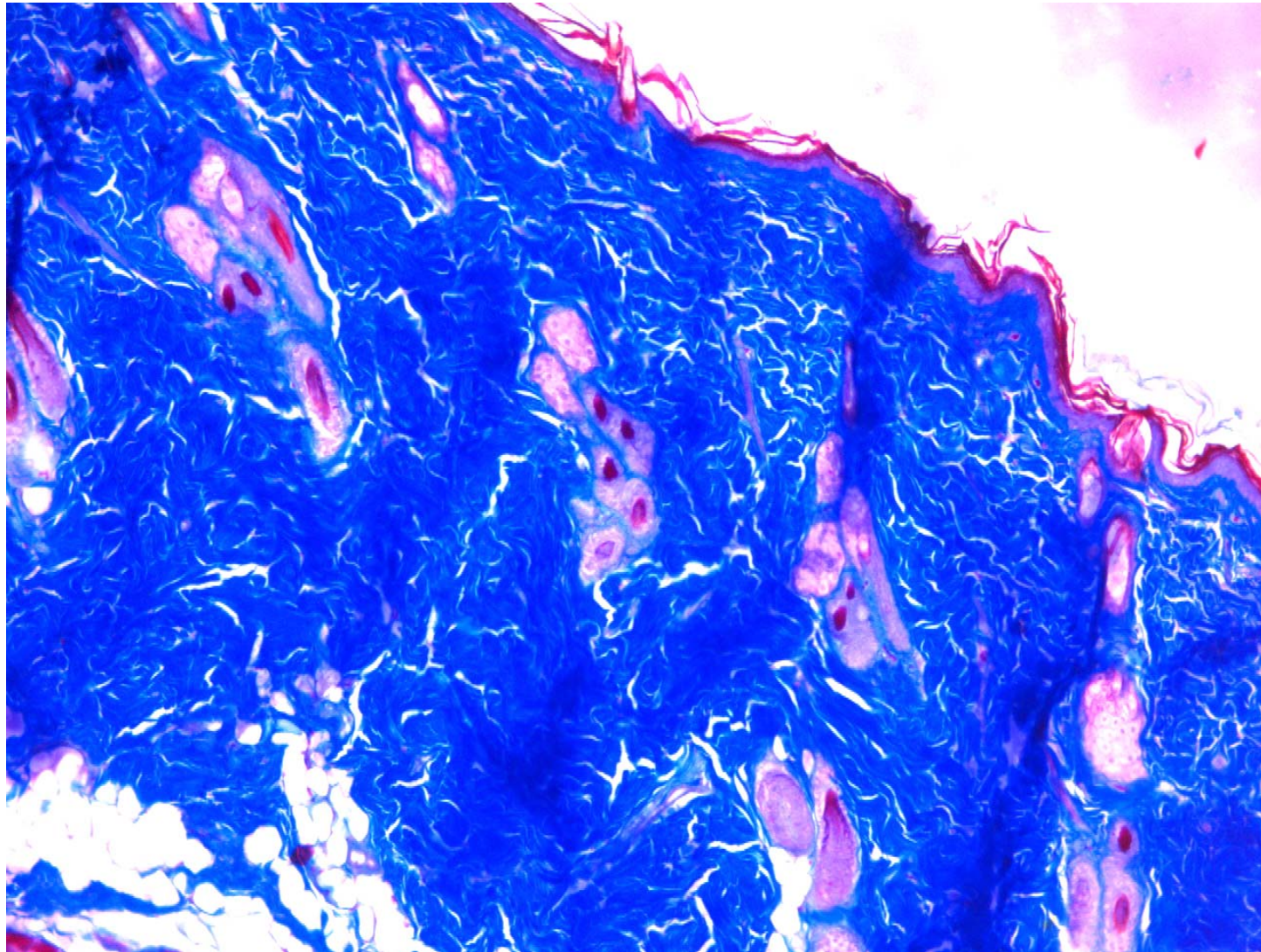
Göbek kordonu  
Mallory

Aort  
Orcein

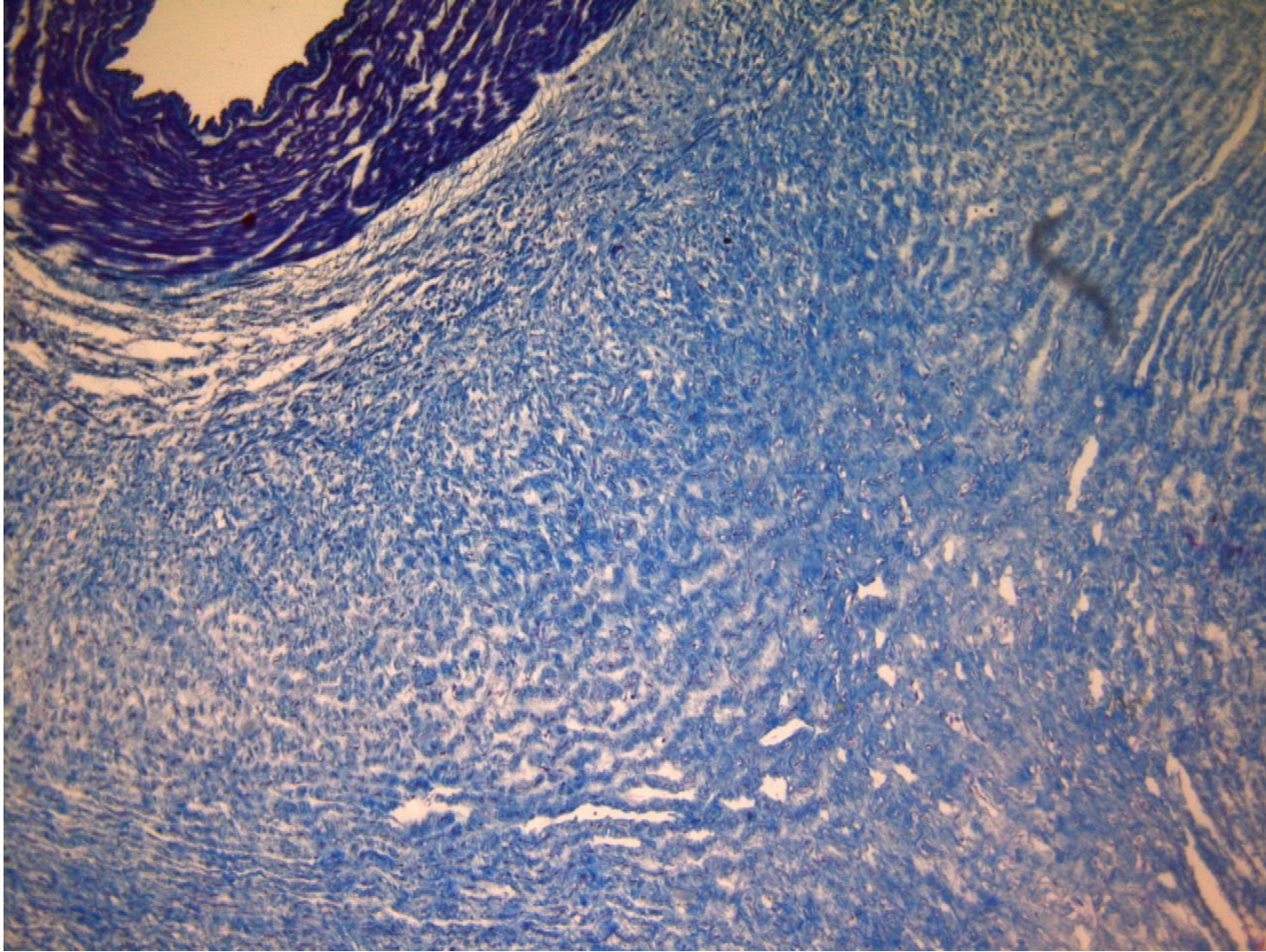




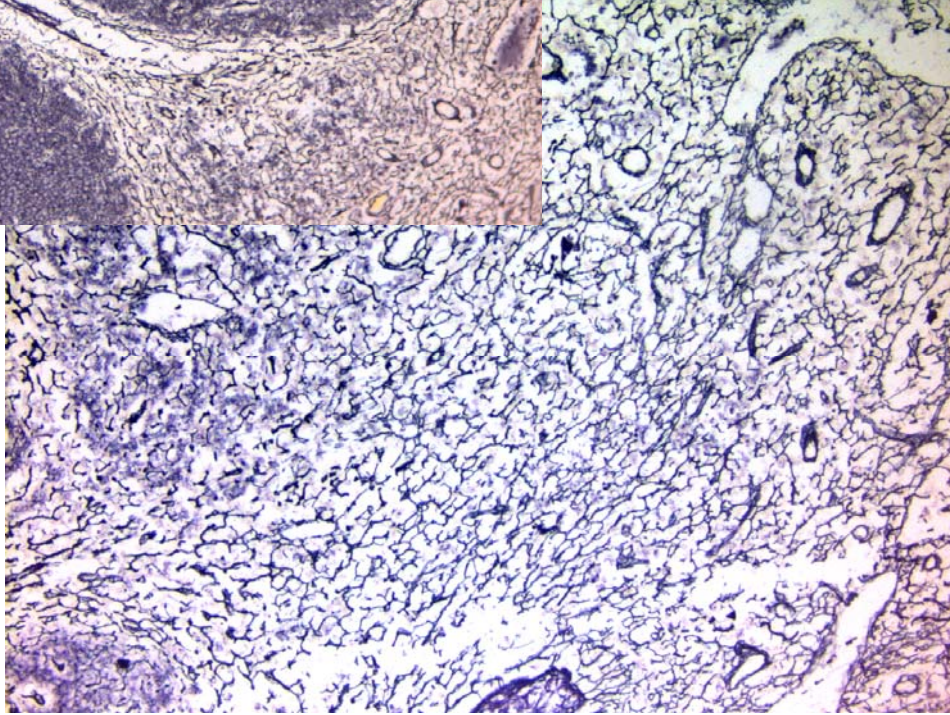
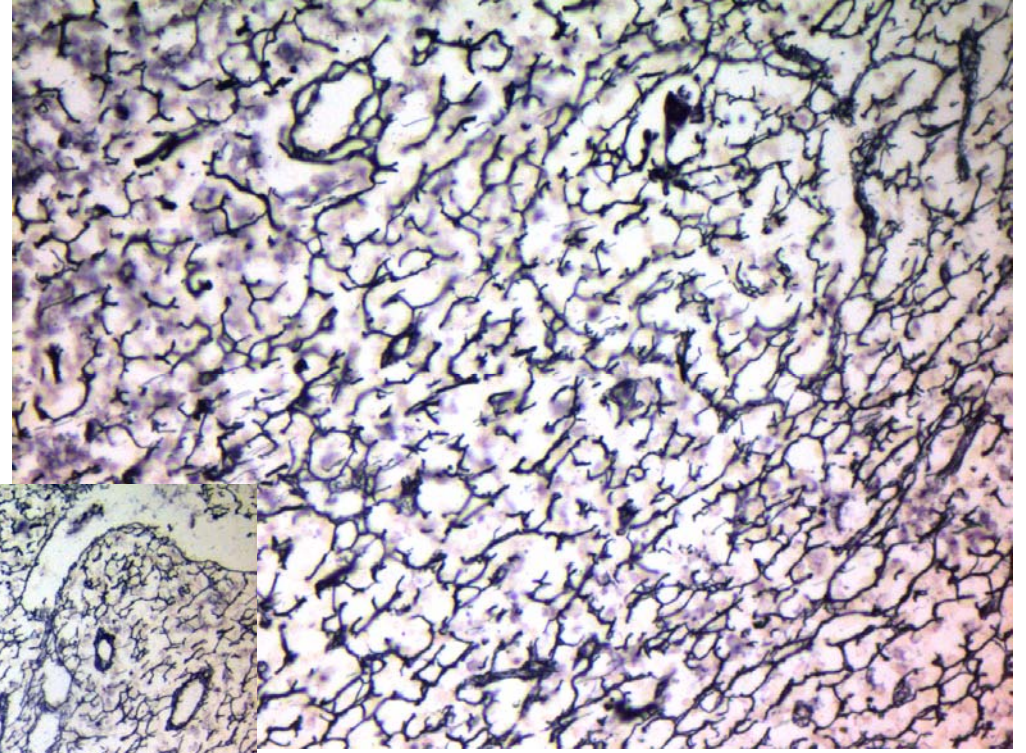
Deri  
Verhoeff



Deri  
Mallory



Göbek kordonu  
Mallory



Lenf düğümü  
Gümüşleme