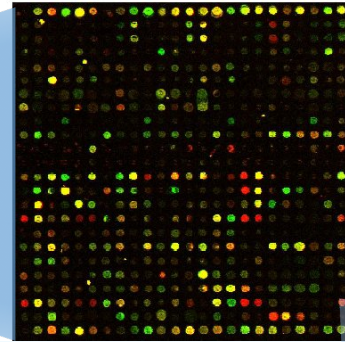
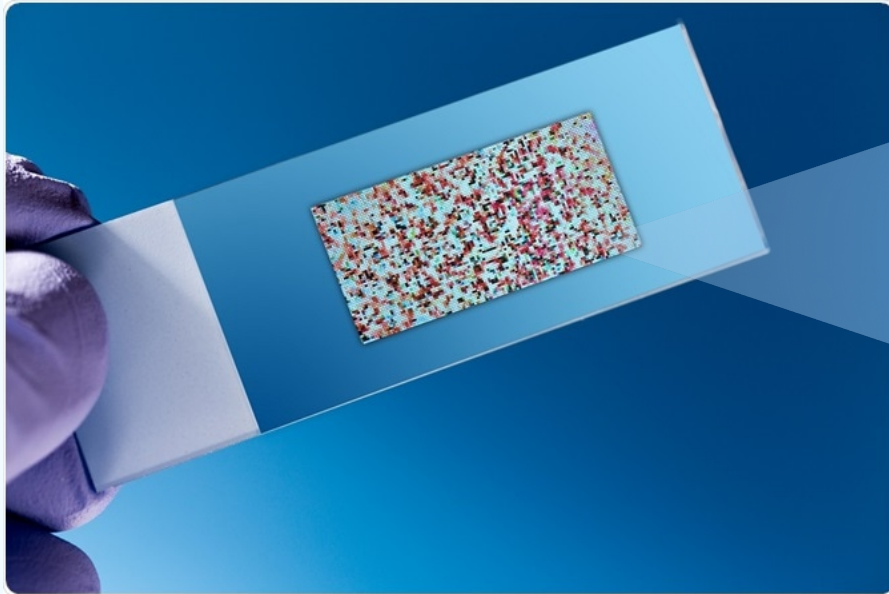
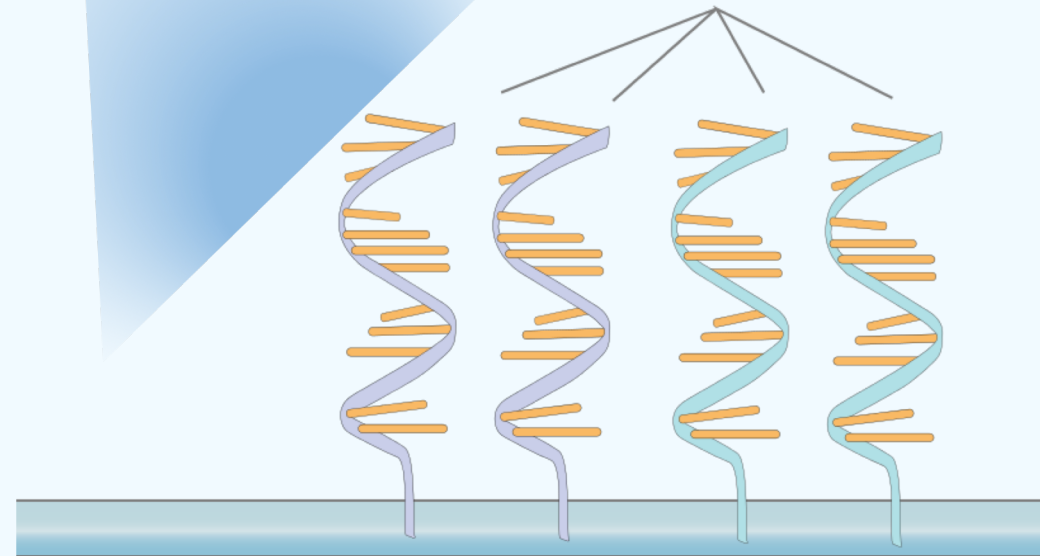


DNA microarray

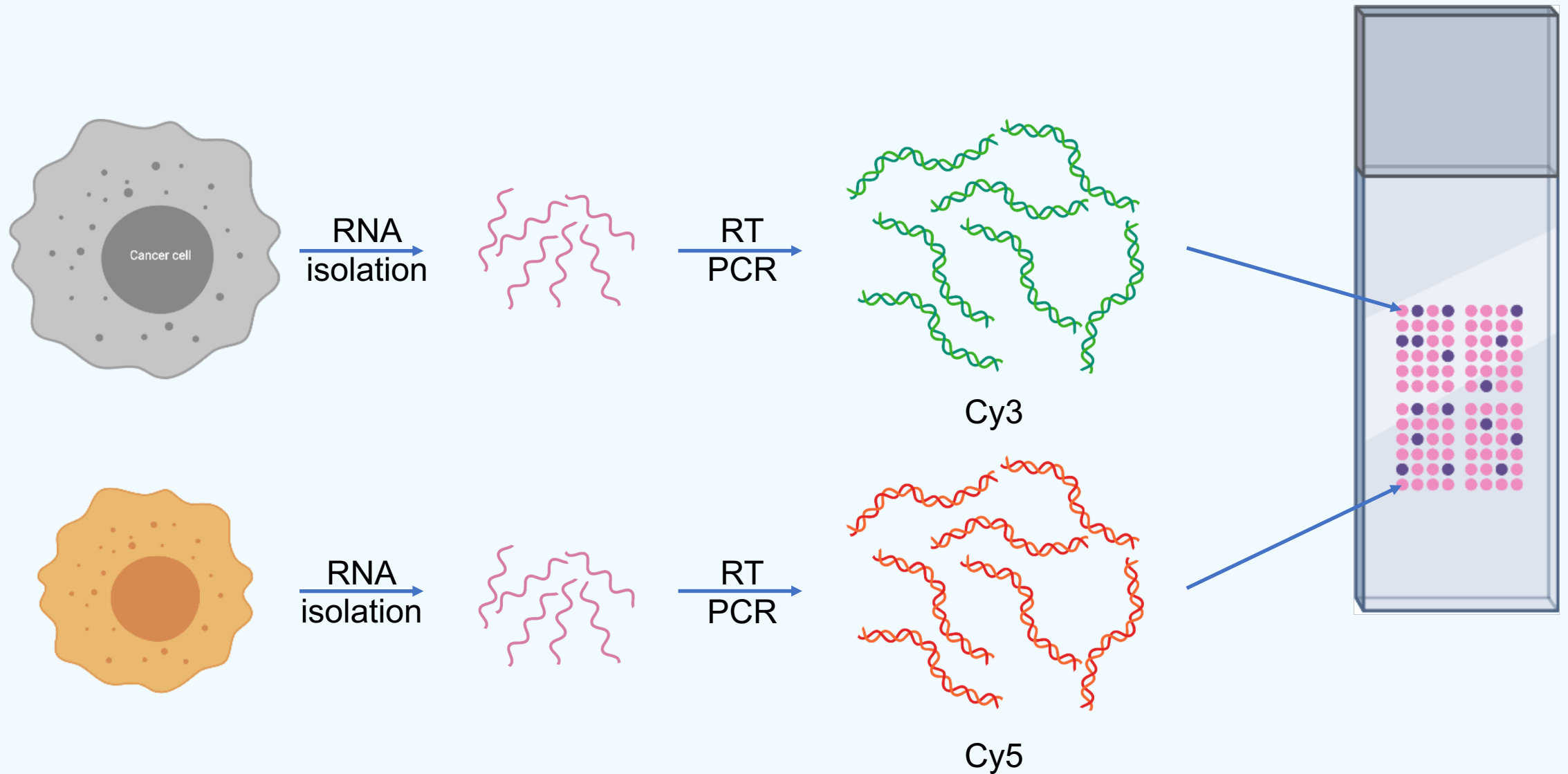
DNA microarray



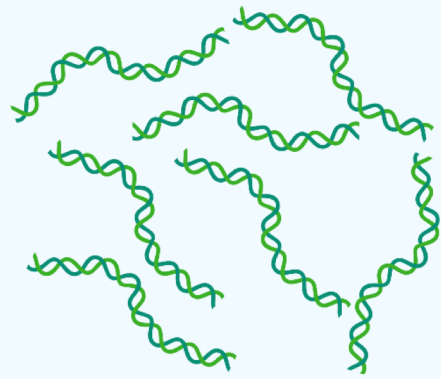
fixed probes



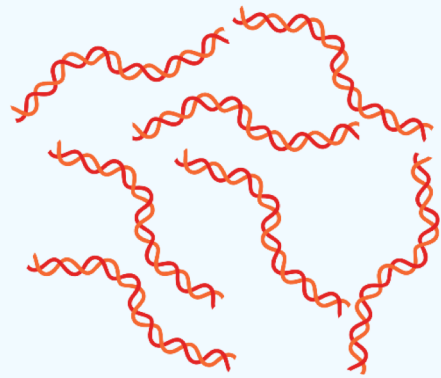
DNA microarray



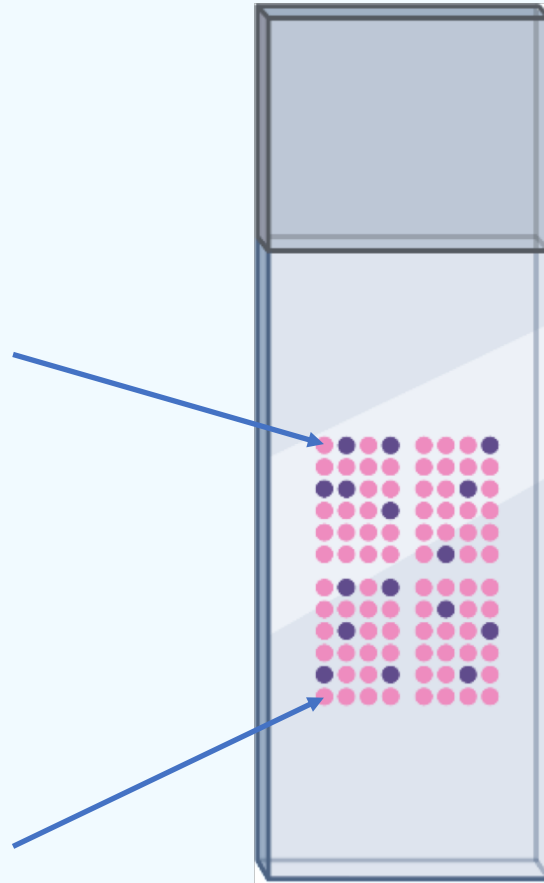
DNA microarray



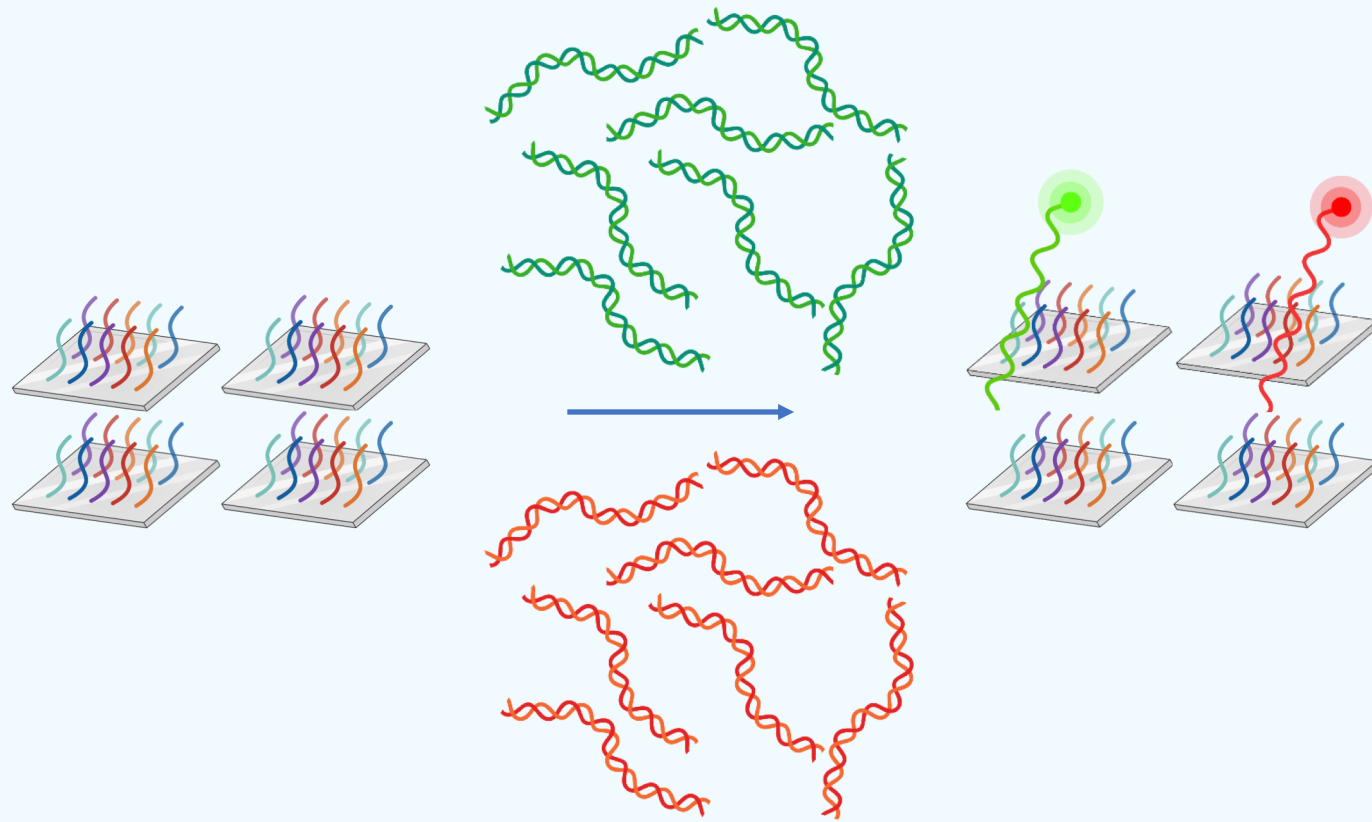
Cy3



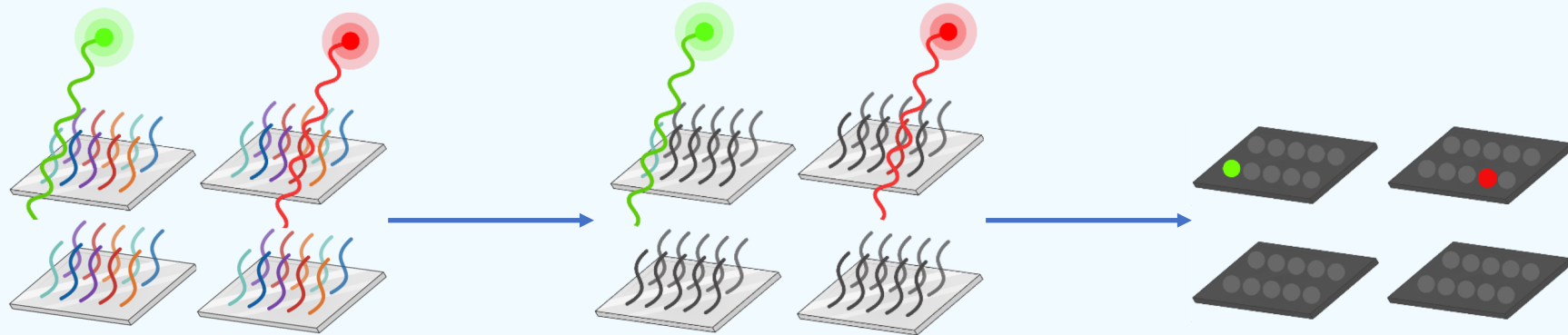
Cy5



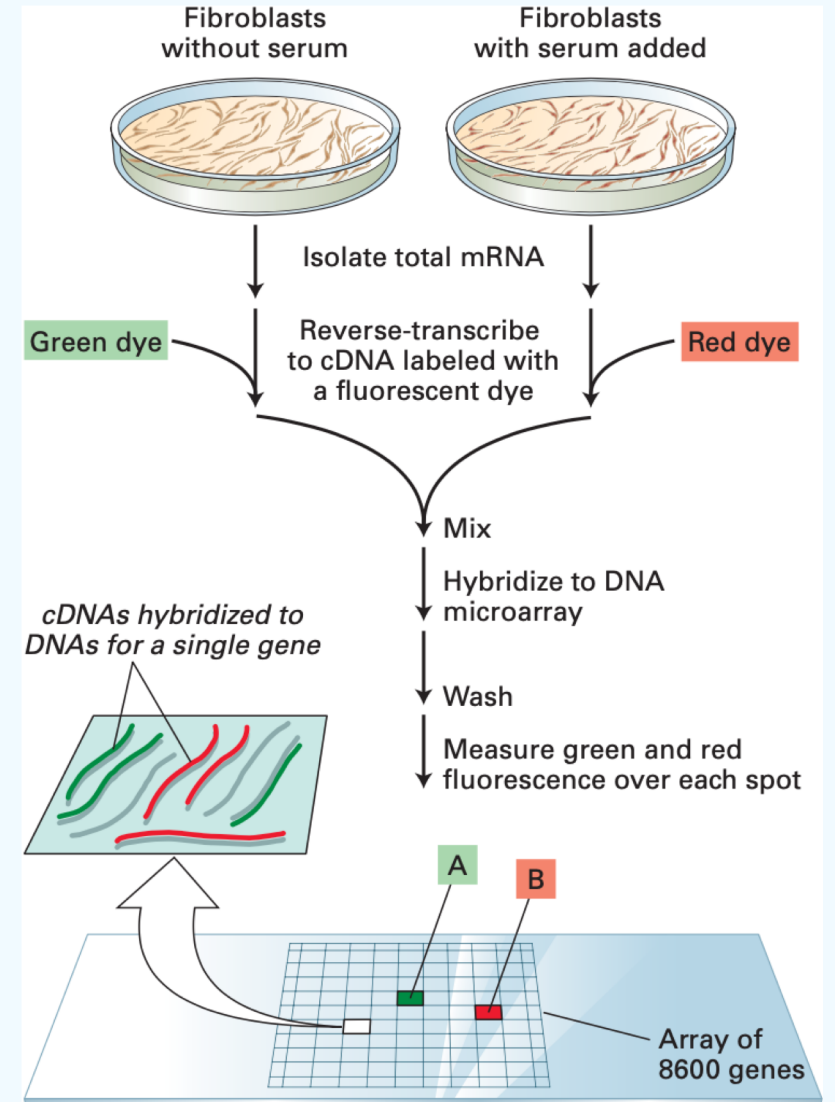
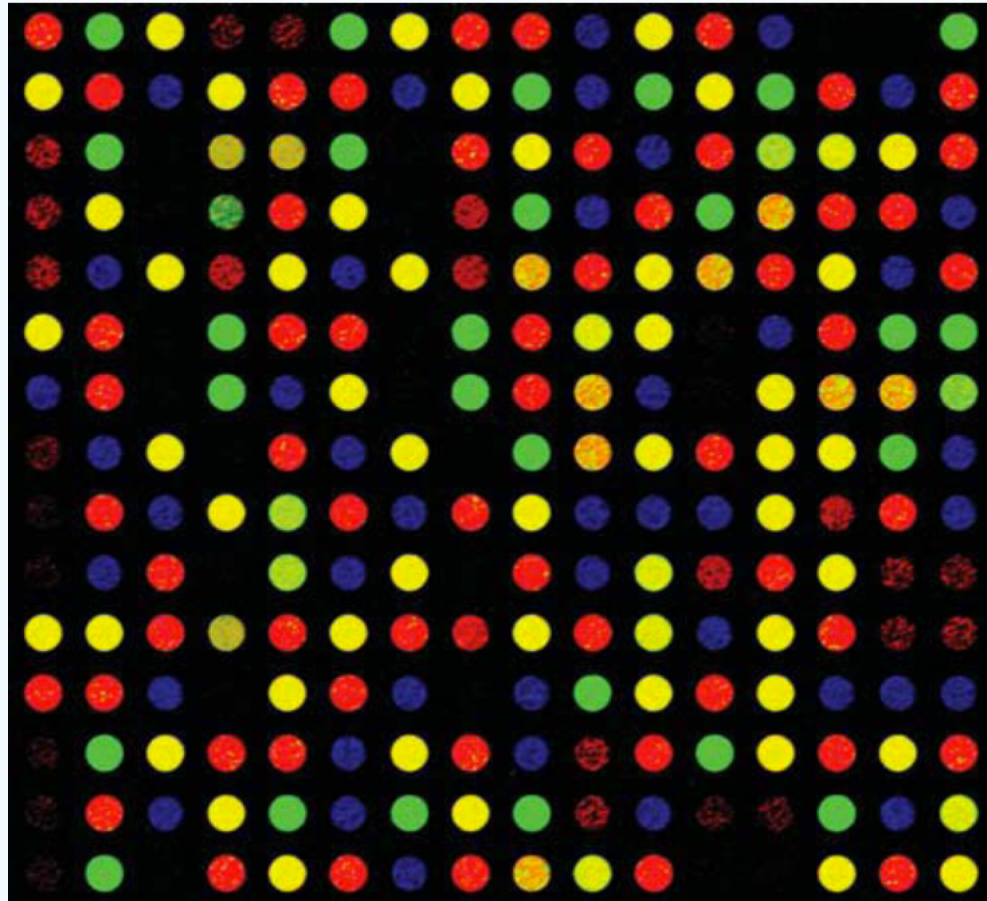
DNA microarray



DNA microarray



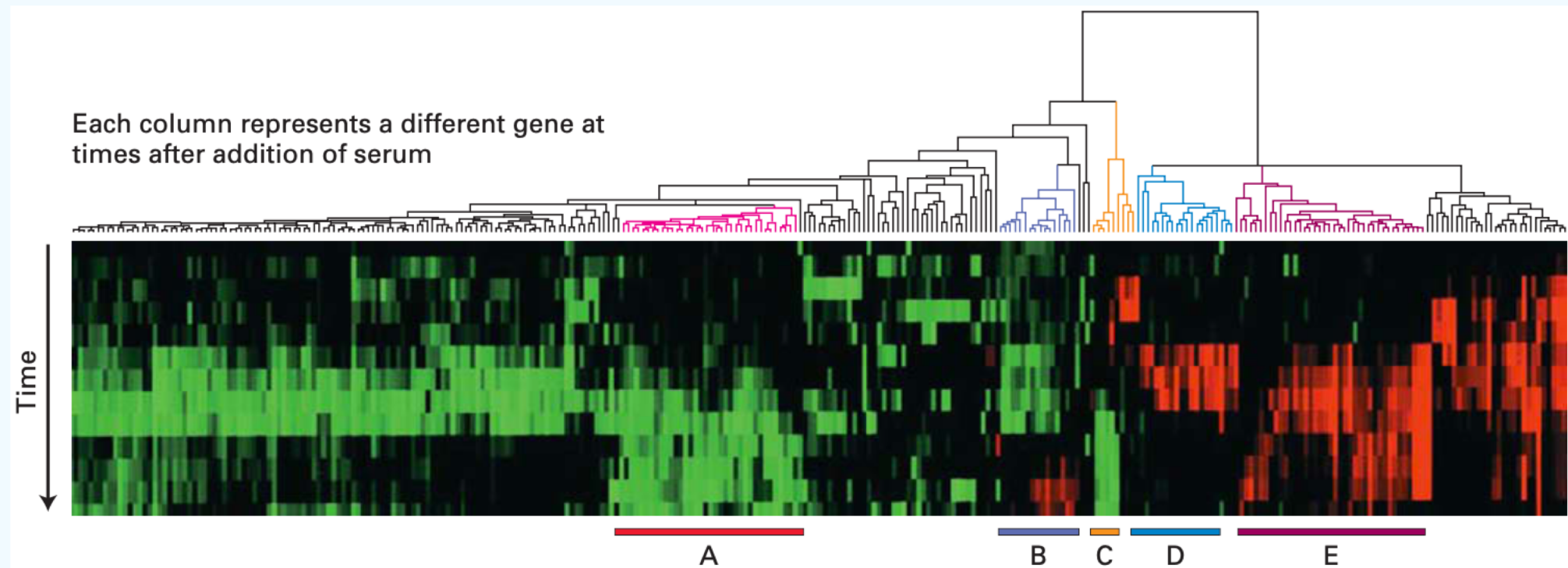
DNA microarray



- A** If a spot is green, expression of that gene decreases in cells after serum addition
- B** If a spot is red, expression of that gene increases in cells after serum addition

DNA microarray

Cluster Analysis of Multiple Expression Experiments Identifies Co-regulated Genes



DNA microarray

- Gene expression profiling
- Comparative genomic hybridization
- GeneID
- ChIP on chip
- SNP detection
- Alternative splicing detection
- Multi-stranded DNA & RNA microarrays