

Bu sunum "Arkaik ve Klasik Dönem Yunan Seramiği" dersi kapsamında kullanılmak üzere eğitim amaçlı hazırlanmıştır. Sunum içinde kullanılan resim, çizim, fotoğraf, harita gibi görseller muhtelif internet kaynaklarından ve kitaplardan temin edilmiştir. Bu imgelerin tamamının yayın hakları, fotoğrafları çeken kişilere aittir; eğitim amaçlı olarak kullanımını uluslararası kanunlarla serbesttir, ancak ticari ve benzeri kullanımları için fotoğraf sahiplerinden izin alınması gerekmektedir.

This presentation was prepared for educational purposes to be used during the lectures of the course «Ancient Greek Pottery: Arcaic and Classical Periods». The visual material like paintings, drawings, photographs and maps are acquired through various internet resources and different books. All the copyrights of the indicated visual material belong to the related artists, writers and researchers who had conducted these works of art, books and the visual designs. The use of these materials for education purposes are under the protection of international laws, but for commercial uses the necessary permissions should be taken from the copyright holders of the works.

Geç Siyah Figür - Theseus Ressamı

London, British Museum: 1902.12-18.3



Copyright Beazley Archive, University of Oxford
Downloaded by Guest Database User on 06/05/2011 09:12:18
From IP Address: 78.162.144.51
Licence Plate 11 UK 100759845
This image is not for publication. It is registered & fingerprinted.



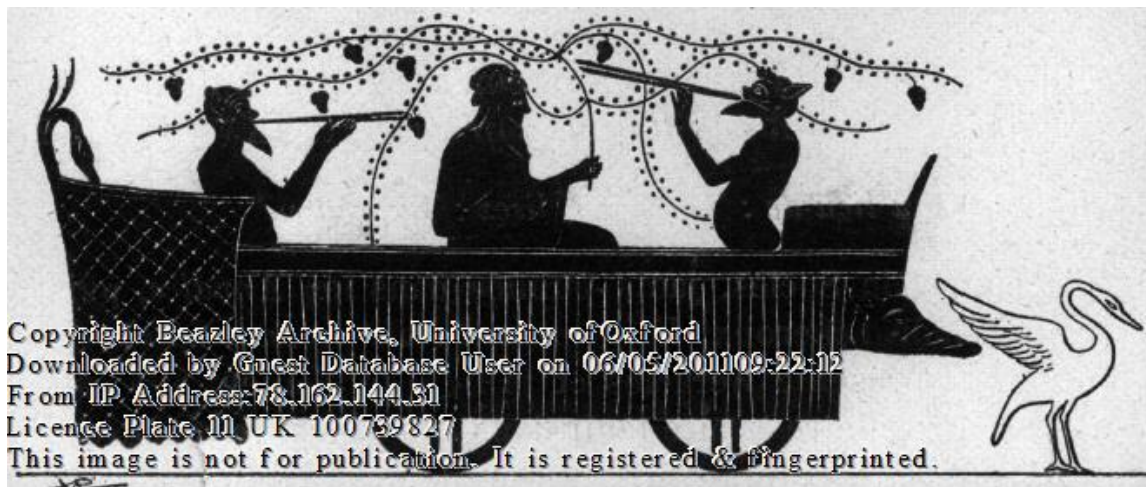
An Attic black-figure skyphos attributed to the Theseus Painter, c. 500 BCE. [Metropolitan Museum of Art](#).



Attic black-figure lekythos,
Odysseus, Theseus Painter, 500 BC,



Terracotta skyphos
Attributed to the Theseus Painter
Date: ca. 500 B.C.
H. 16.2 cm
diameter 22.4 cm
MetMuseum



Copyright Beazley Archive, University of Oxford
Downloaded by Guest Database User on 06/05/2011 09:22:12
From IP Address: 78.162.144.31
Licence Plate: 11 UK 100739827
This image is not for publication. It is registered & fingerprinted.

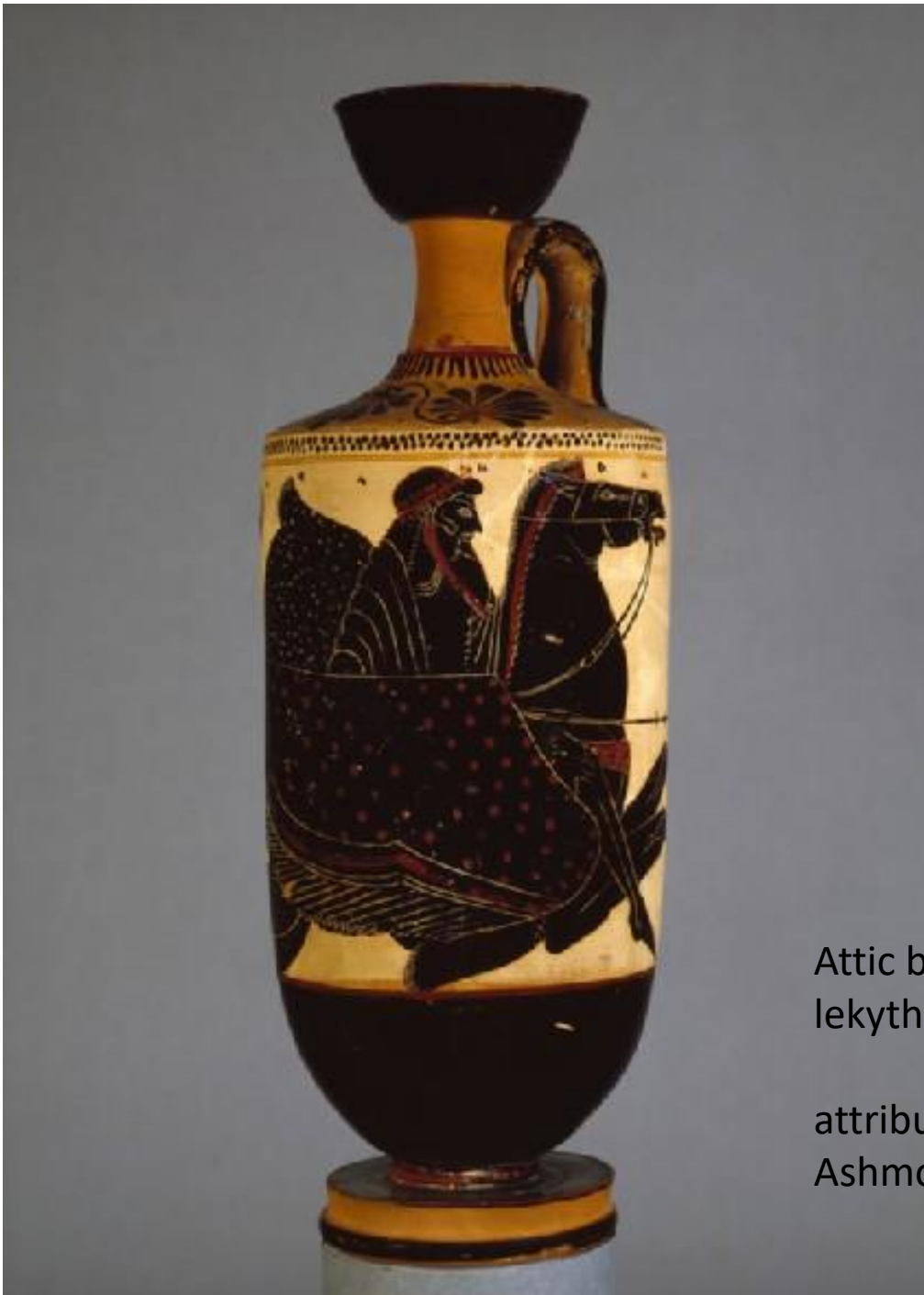
London, British Museum: B79



Black-figure skyphos, the ship-car
of Dionysos, by the Theseus
painter, about 500 BC, National
Archaeological Museum of
Athens

Athena Ressami





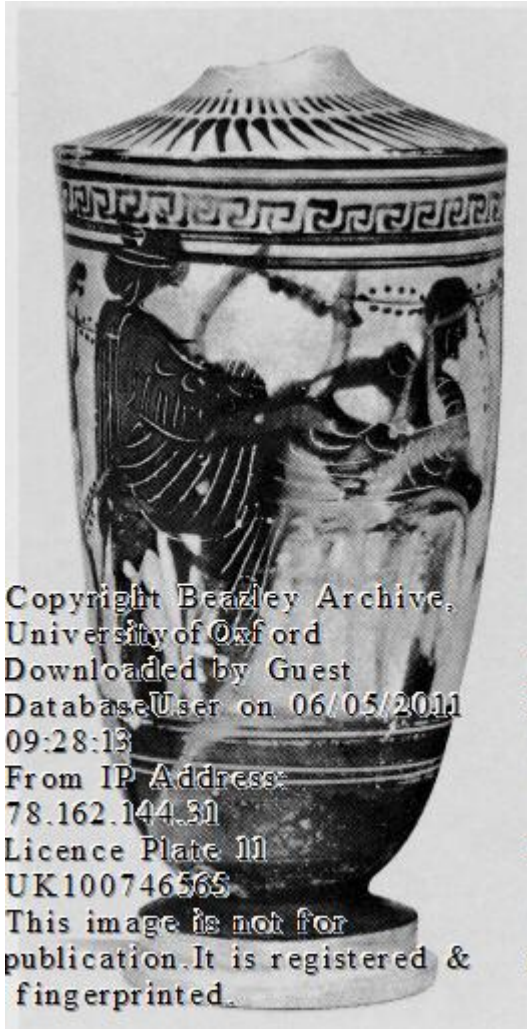
30.2 cm (height)
rim 7 cm (diameter)
foot 8 cm (diameter)
11.2 cm (width)
1.5 cm (rim thickness)

Attic black-figure white ground pottery
lekythos depicting a mythological scene

attributed to The Athena Painter (490 - 480 BC)
Ashmolean Museum, Oxford

Haimon Ressami

Heidelberg, Ruprecht-Karls-Universität: L62





Attic black-figure lekythos workshop of the Haimon Painter



ATTIC BLACK-FIGURE WHITE GROUND
LEKYTHOS NEAR THE HAIMON PAINTER



Black-figure lekythos - Workshop of the Haimon Painter