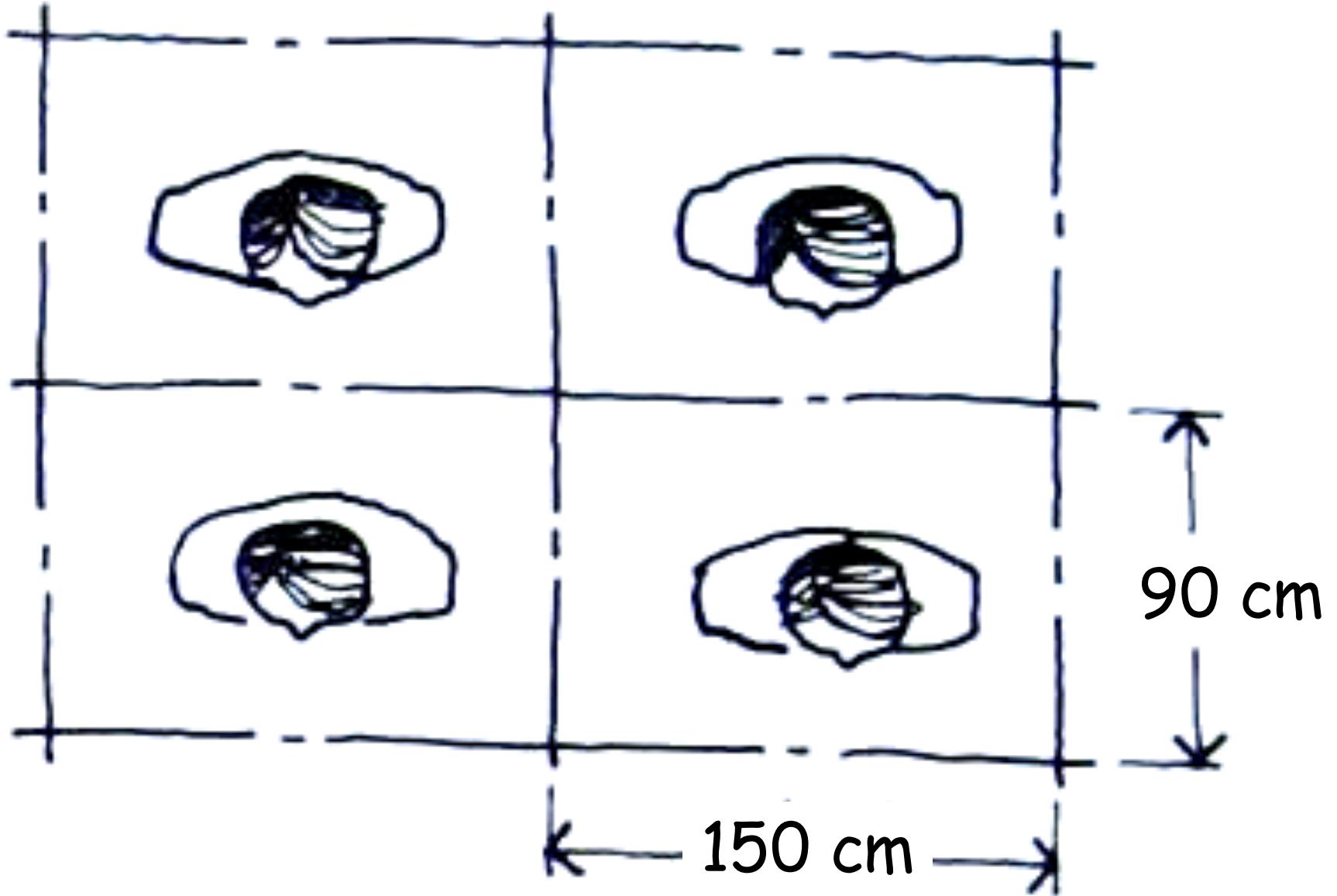




SİRKÜLASYON

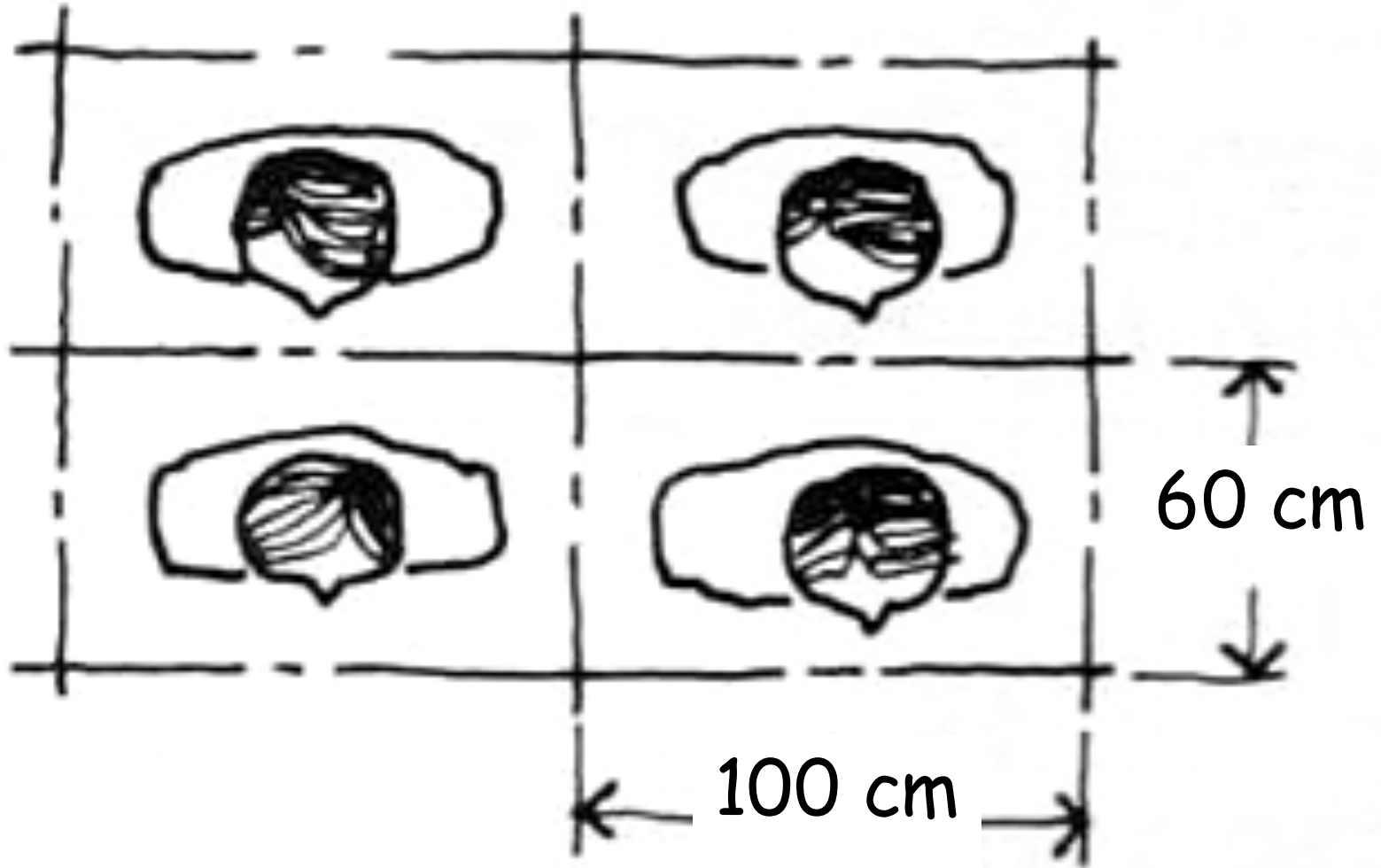
Basamak-Rampa-Duvar

YAYA DOLAŞIMI İÇİN KRİTERLER



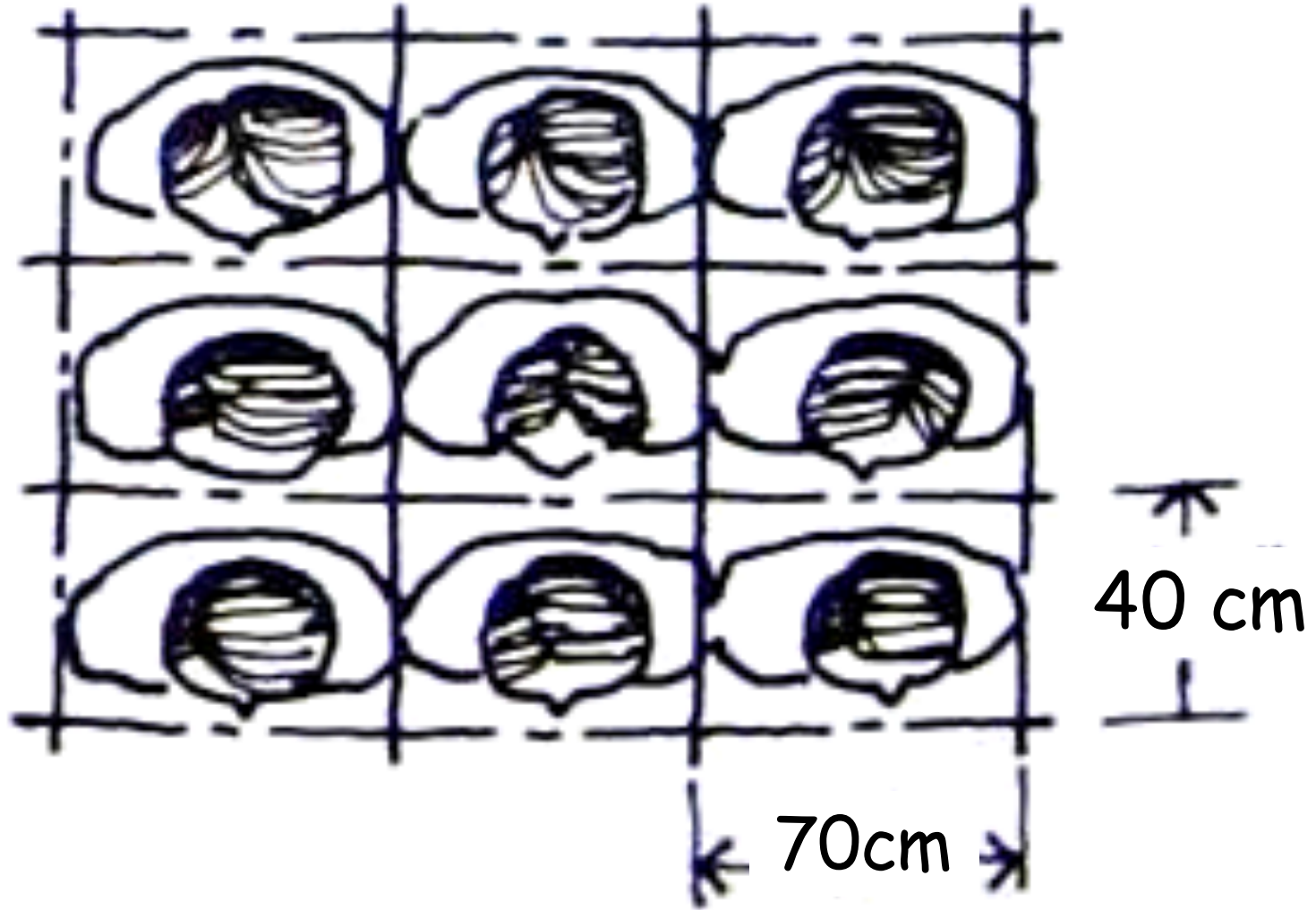
RAHAT DOLAŞIM = ?

YAYA YAYA DOLAŞIMI İÇİN KRİTERLER

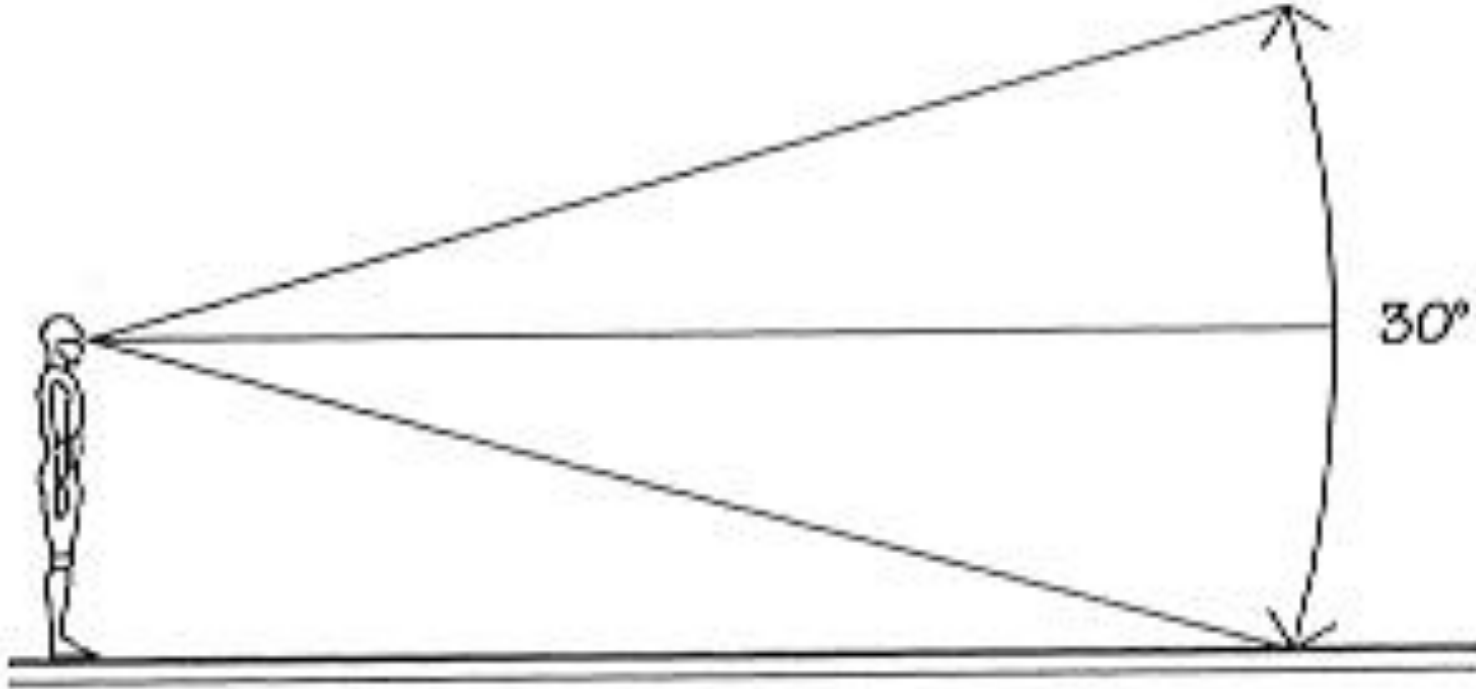


KALABALIK HAREKET = ?

YAYA YAYA DOLAŞIMI İÇİN KRİTERLER

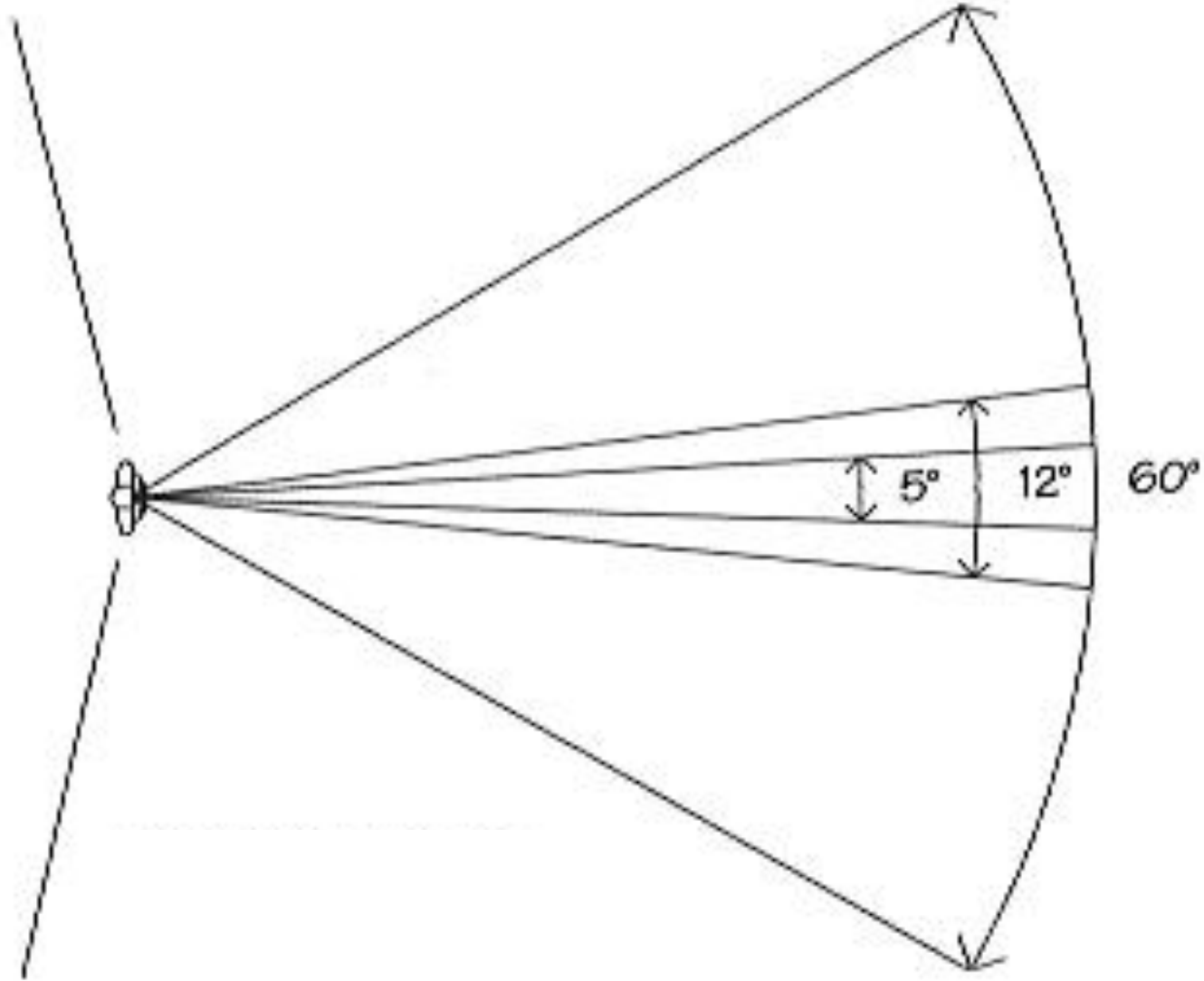


HAREKETSİZLİK = ?

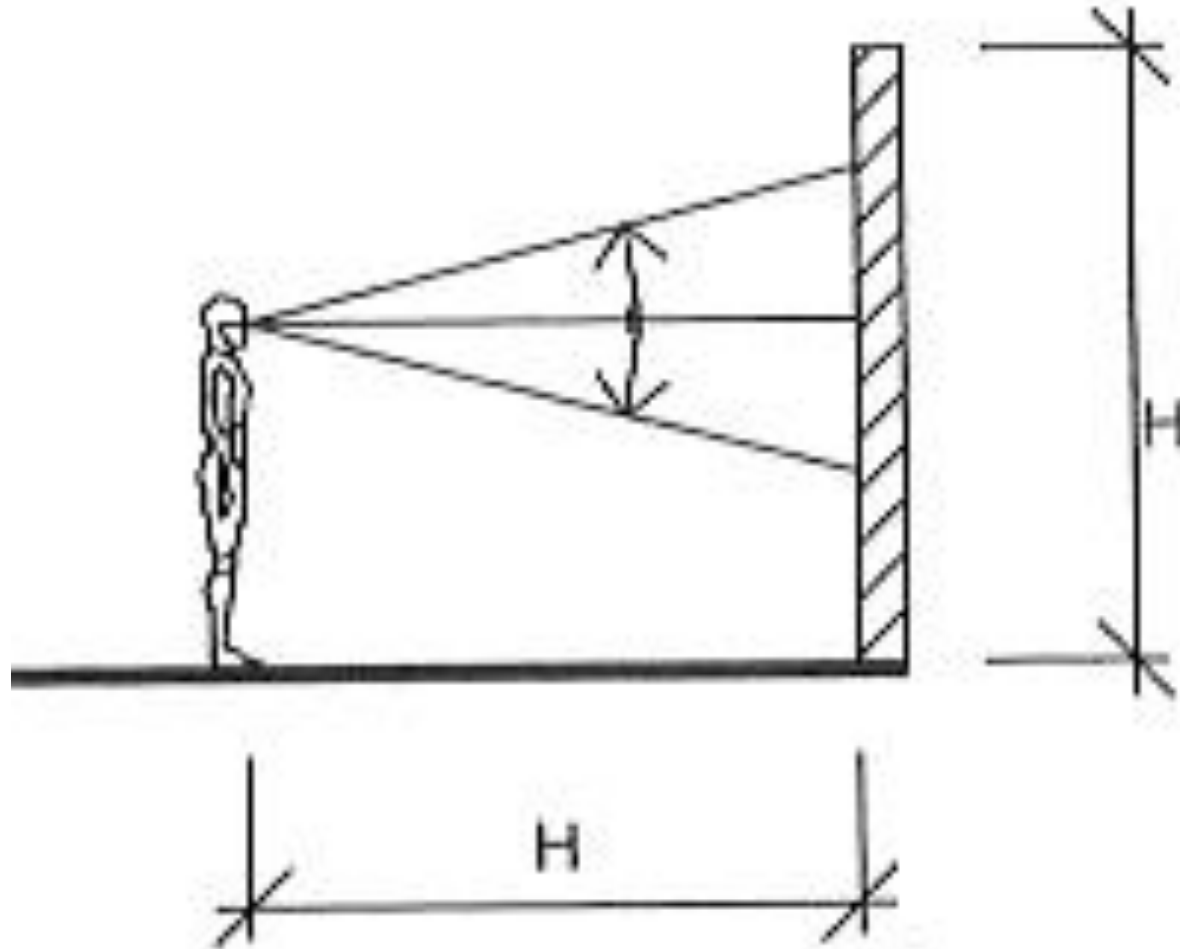


DIKEY GÖRÜŞ AÇISI

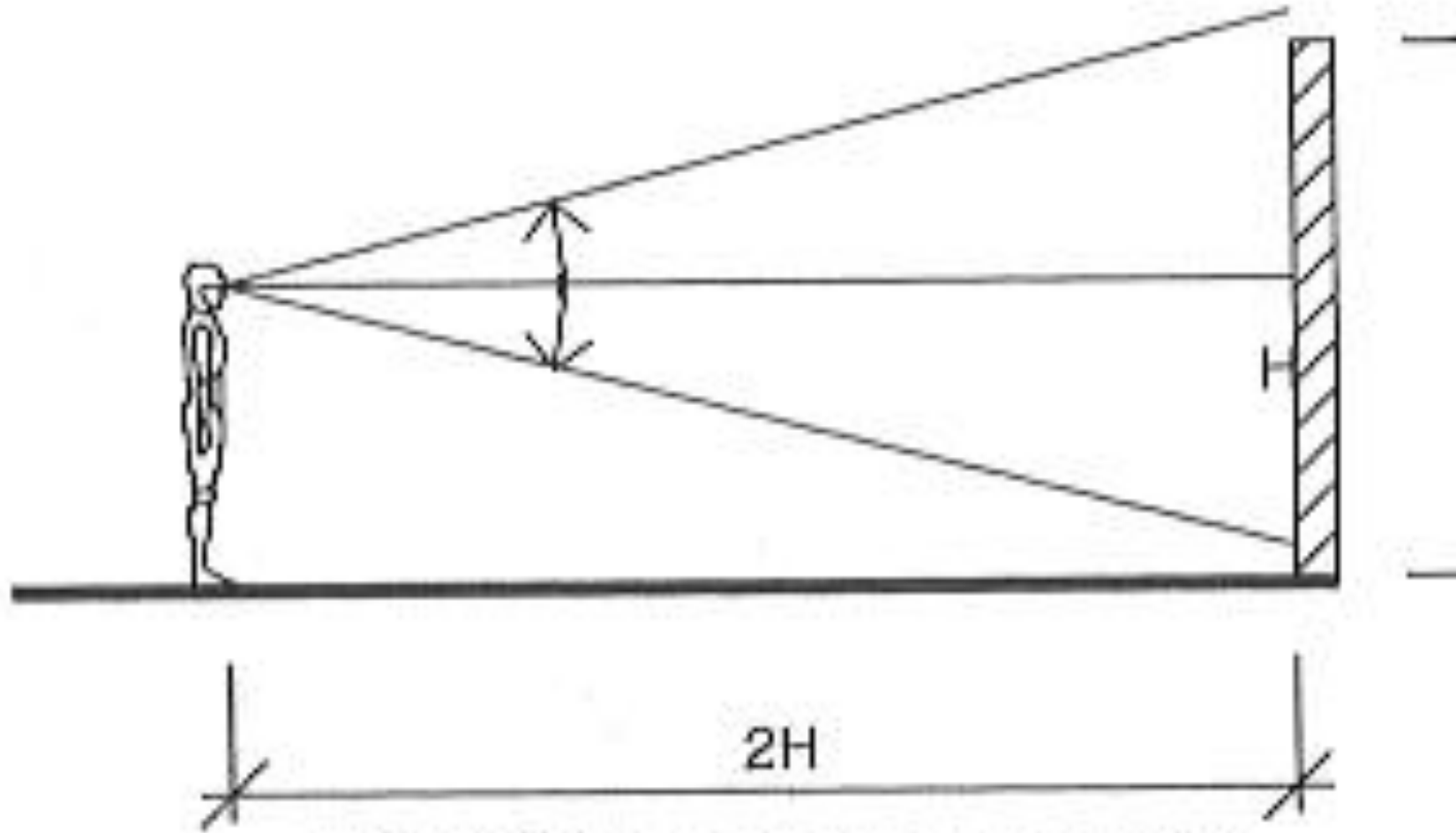
YAYA GÖRÜŞ AÇILARINA GÖRE YOL DÜZENLEMELERİ



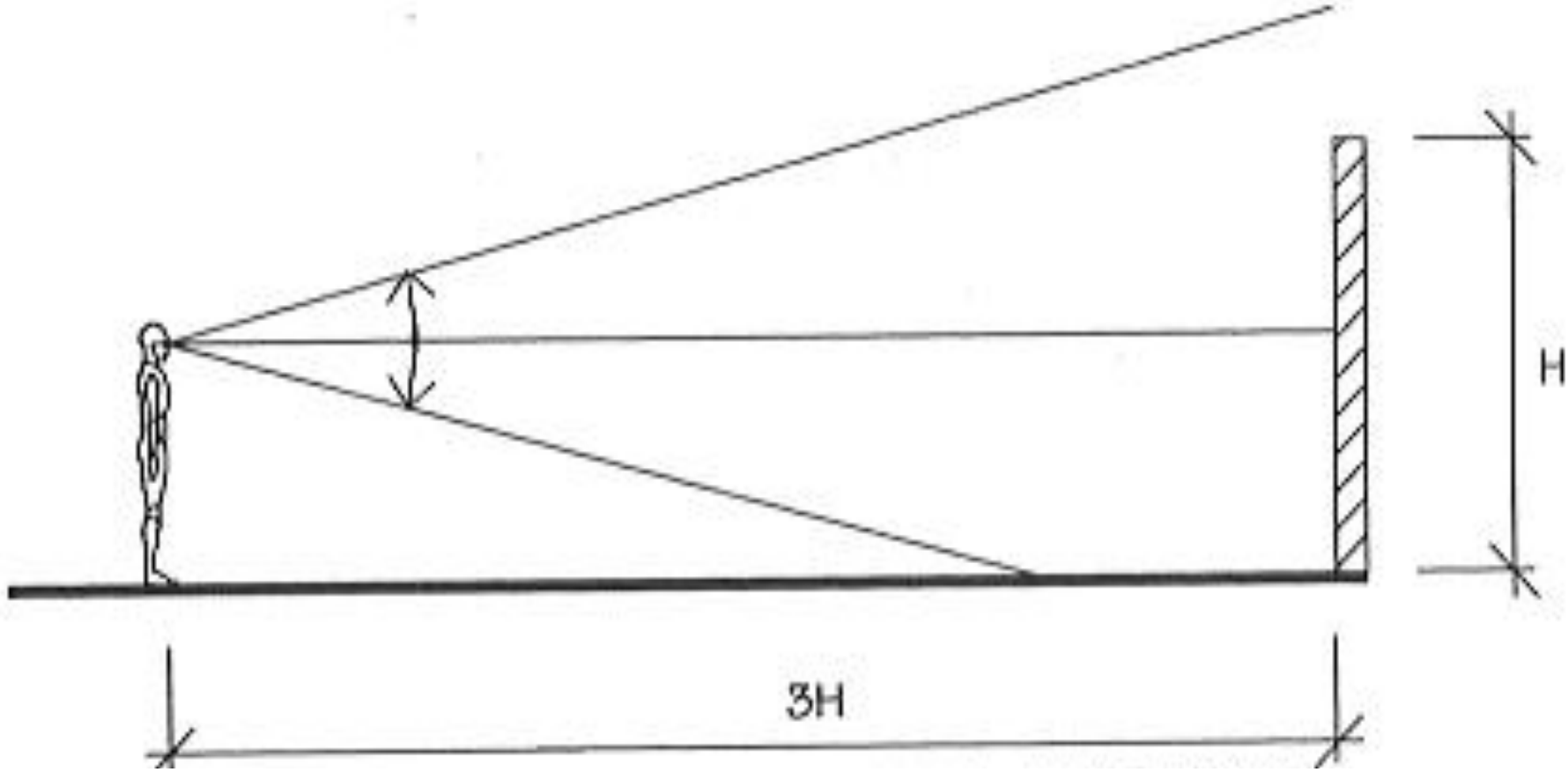
YATAY GÖRÜŞ AÇISI



OBJELER BÜTÜN OLARAK ALGILANAMAZ



OBJELER BÜTÜN OLARAK ALGILANIR



OBJE DETAYLARI ALGILANAMAZ

ULAŖIM TİPİNE GÖRE YOL FORMLARI



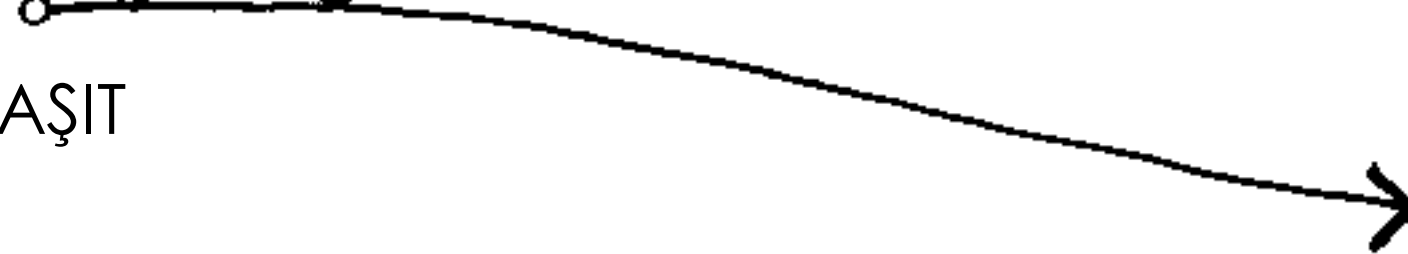
YAYA



BİSİKLET



TAŖIT



YÜRÜYÜŐ
YOLU



Eđim:
%1-%5

RAMPA



Eđim:
%5-%8

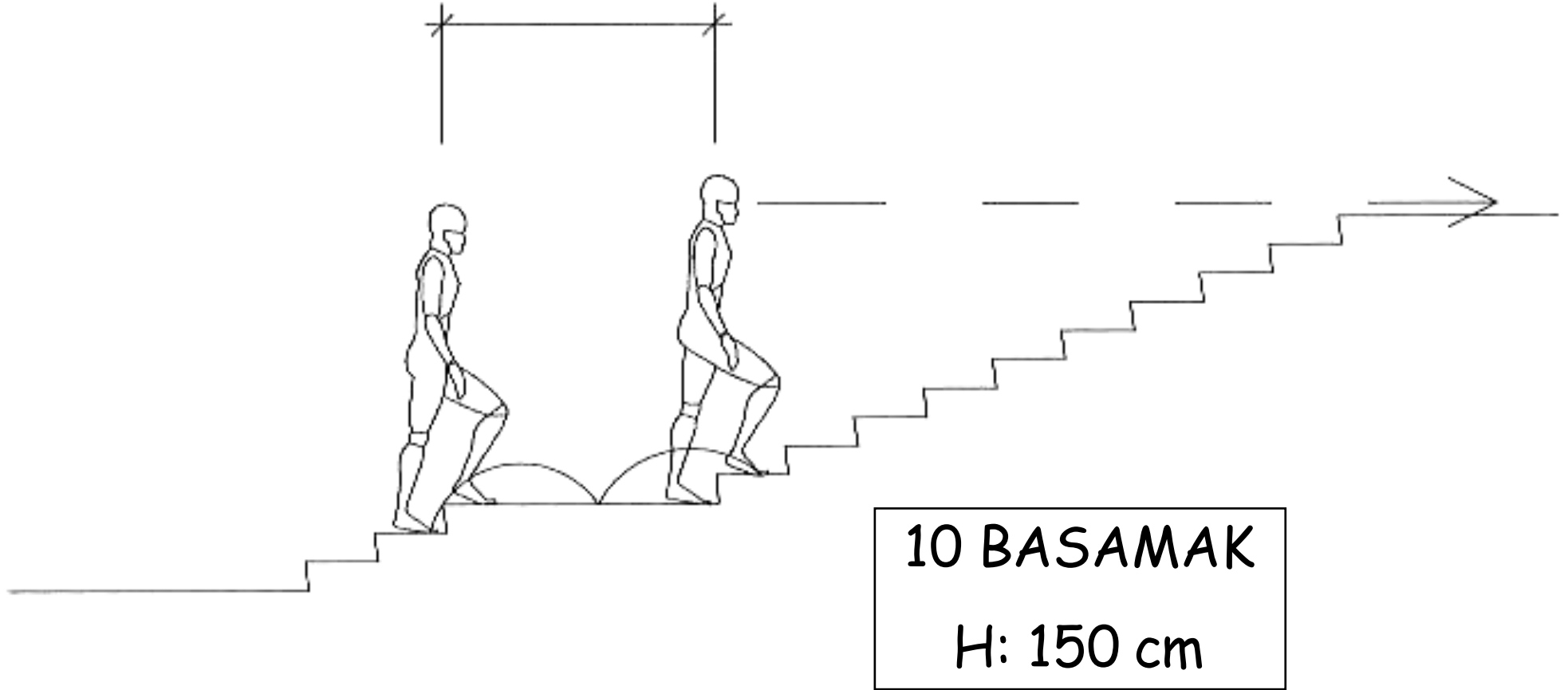
BASAMAK



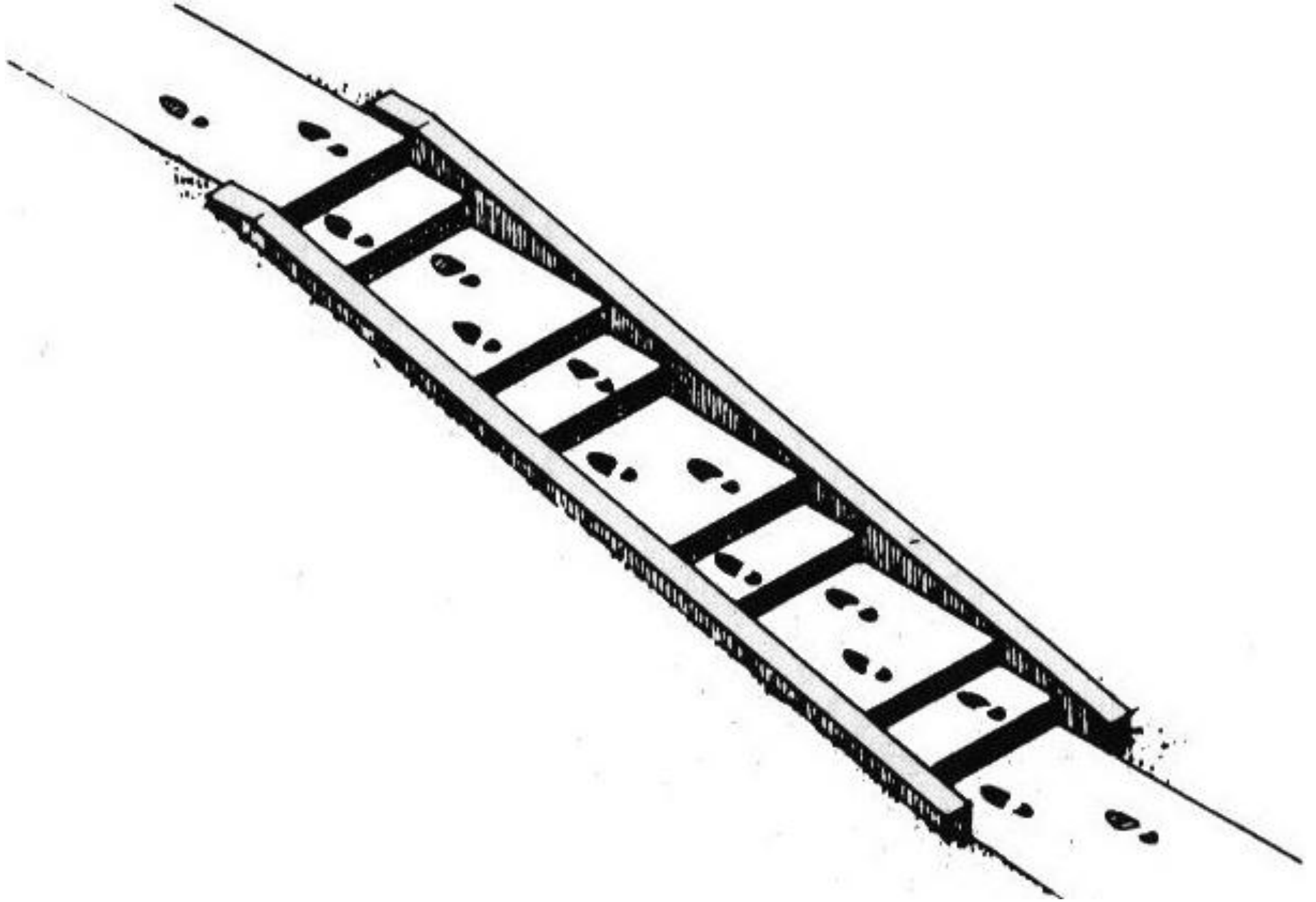
Eđim:
%20-%50

İNSAN FİZYOLOJİSİNE GÖRE BASAMAK DİZİLERİ

SAHANLIK



İNSAN FİZYOLOJİSİNE GÖRE BASAMAK DİZİLERİ







HACETTEPE UNİVERSİTESİ
ÖĞRENCİ KAFETERYASI

HACETTEPE UNİVERSİTESİ
HASTANELERİ
SİHİYE SAĞLIK MERKEZİ







← Personel Dairesi Başkanlığı
← İdari ve Mali İşler Dairesi Başkanlığı











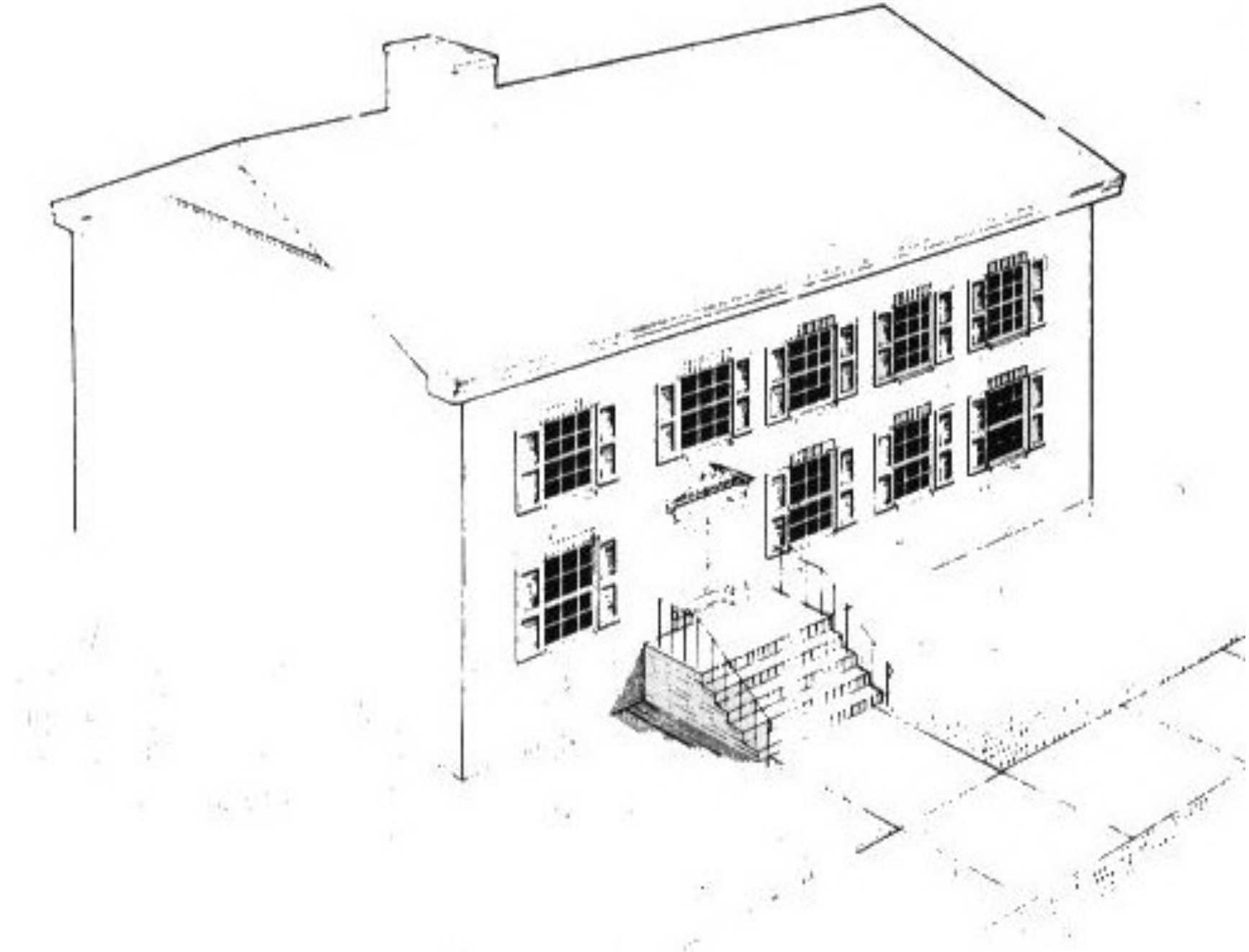




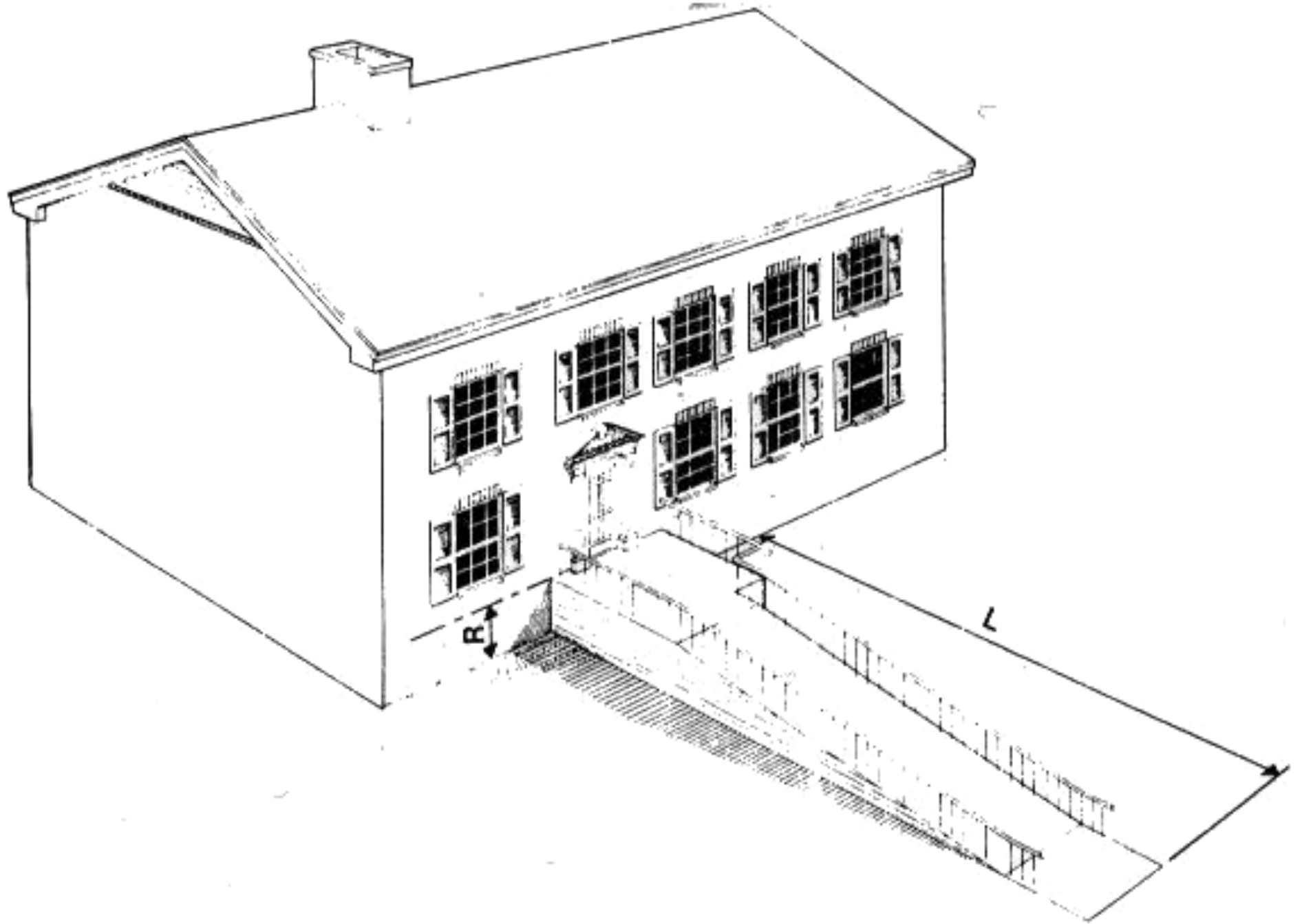




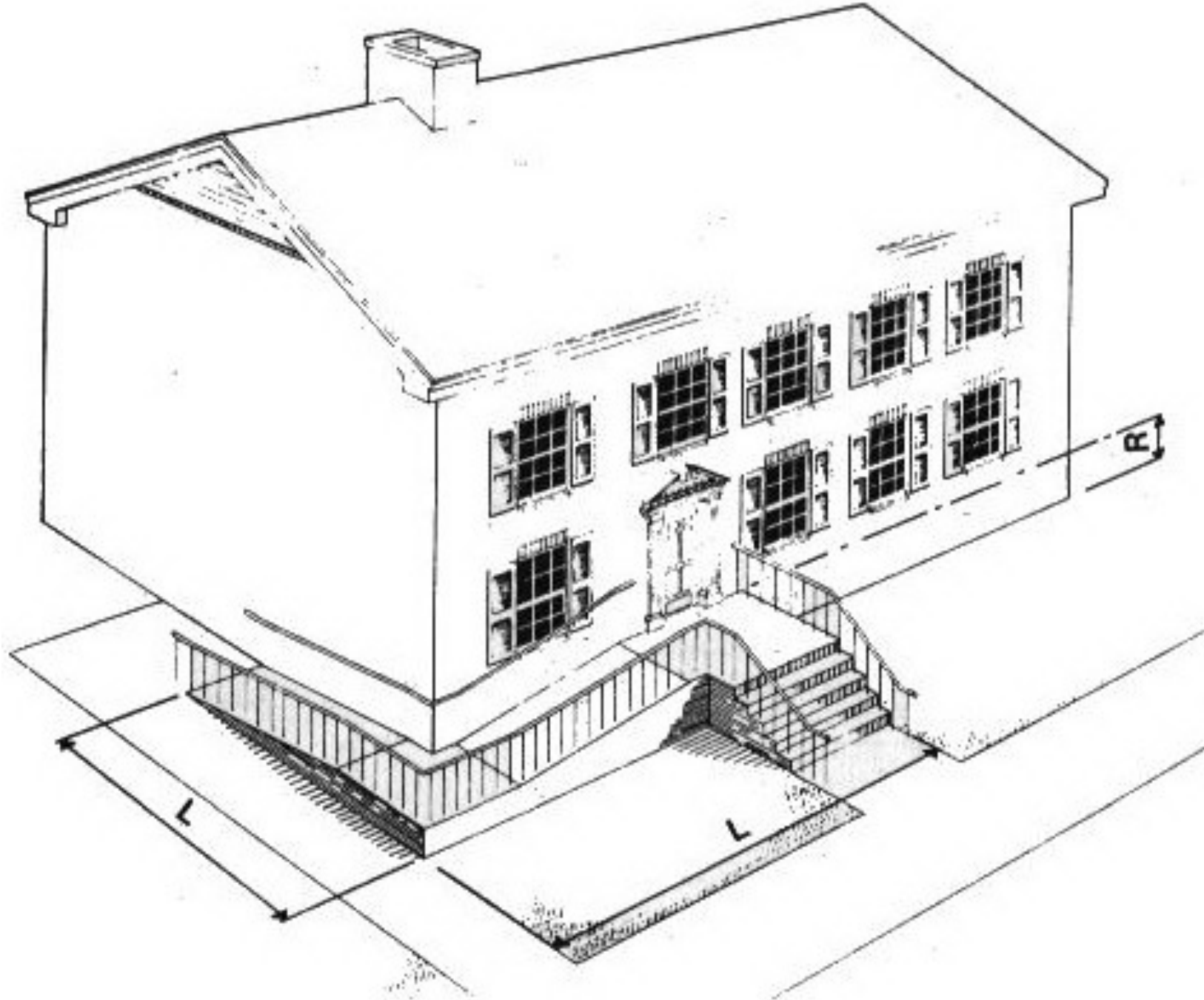
BASAMAK-RAMPA ÇÖZÜMLERİ



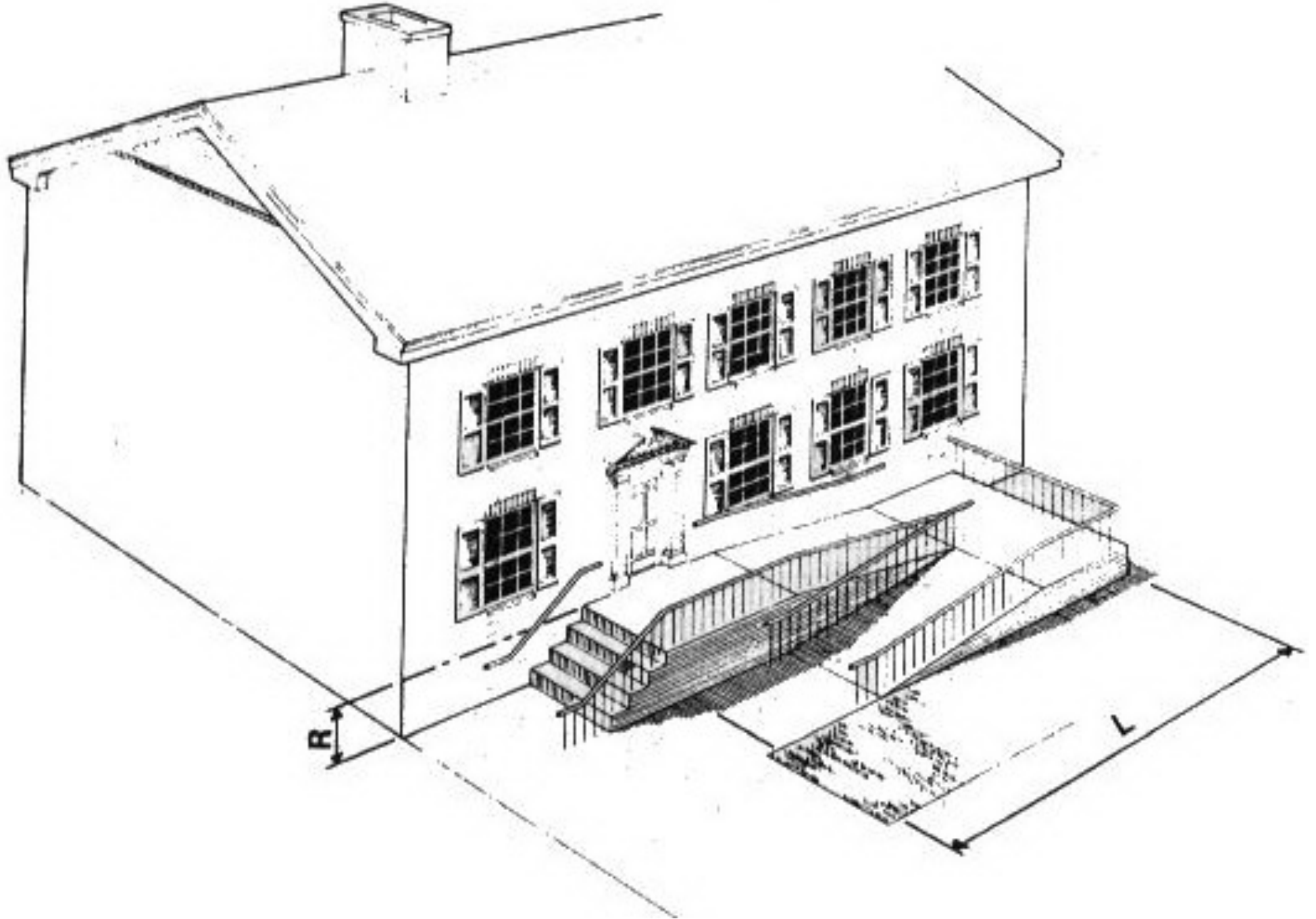
BASAMAK-RAMPA ÇÖZÜMLERİ



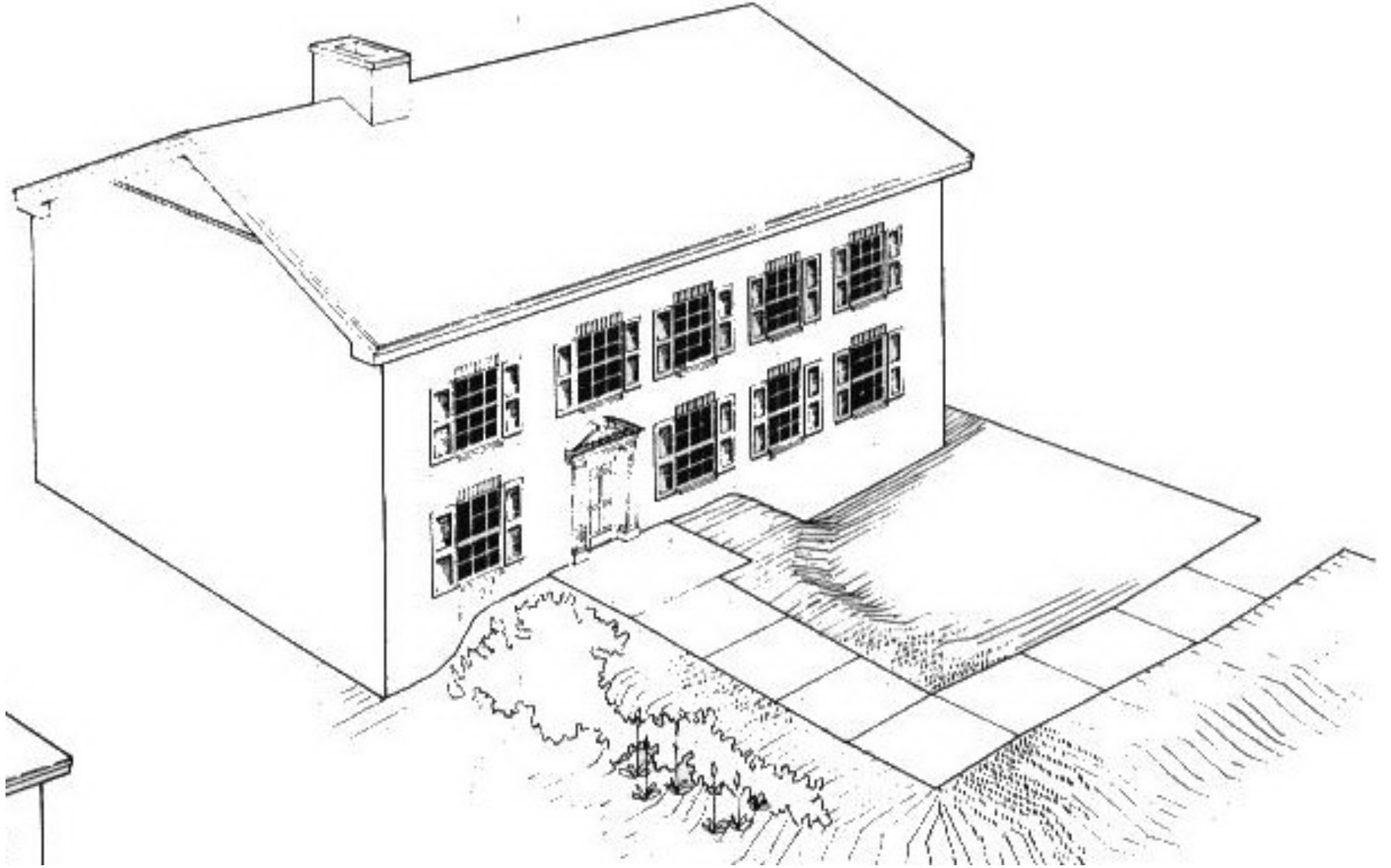
BASAMAK-RAMPA ÇÖZÜMLERİ



BASAMAK-RAMPA ÇÖZÜMLERİ

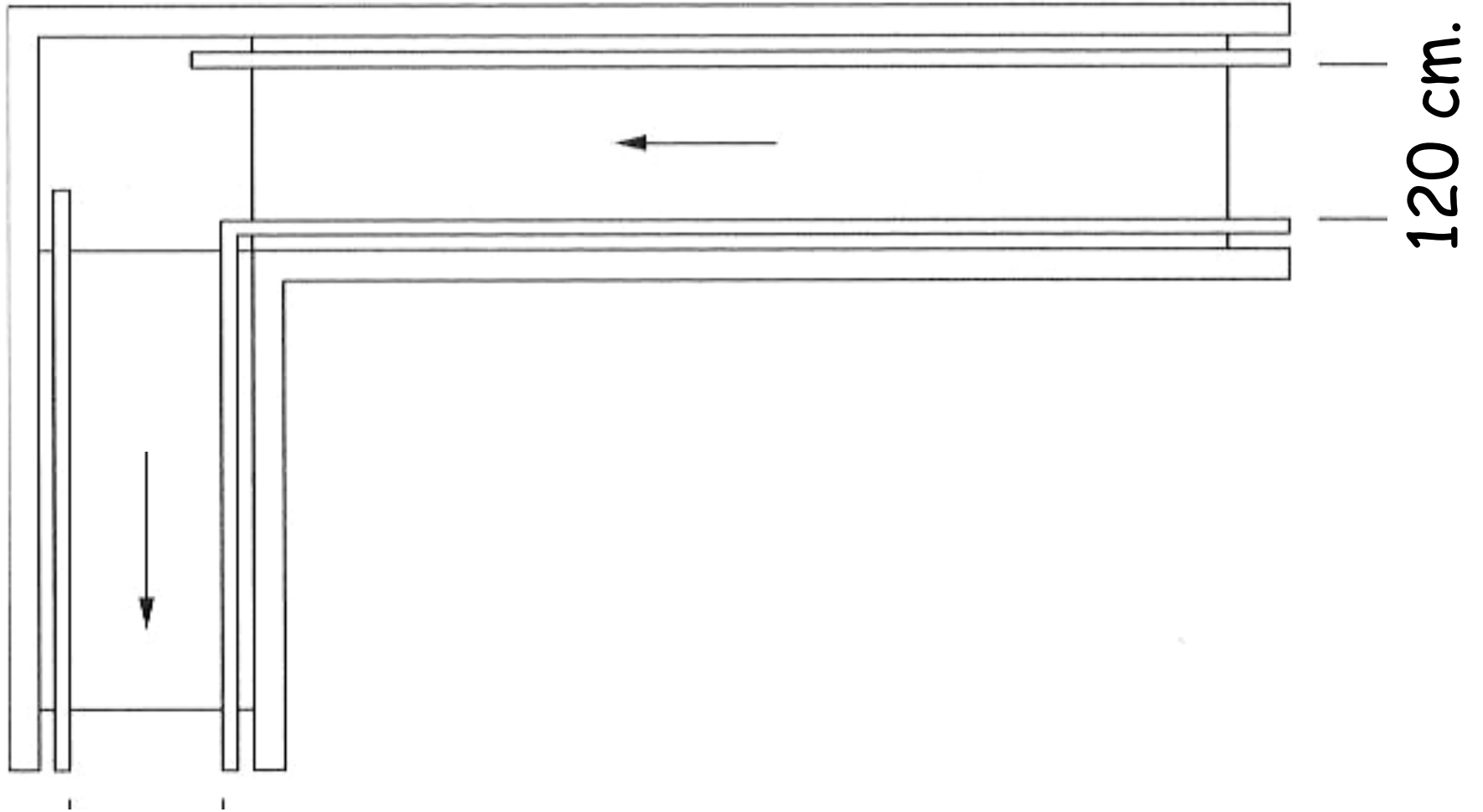


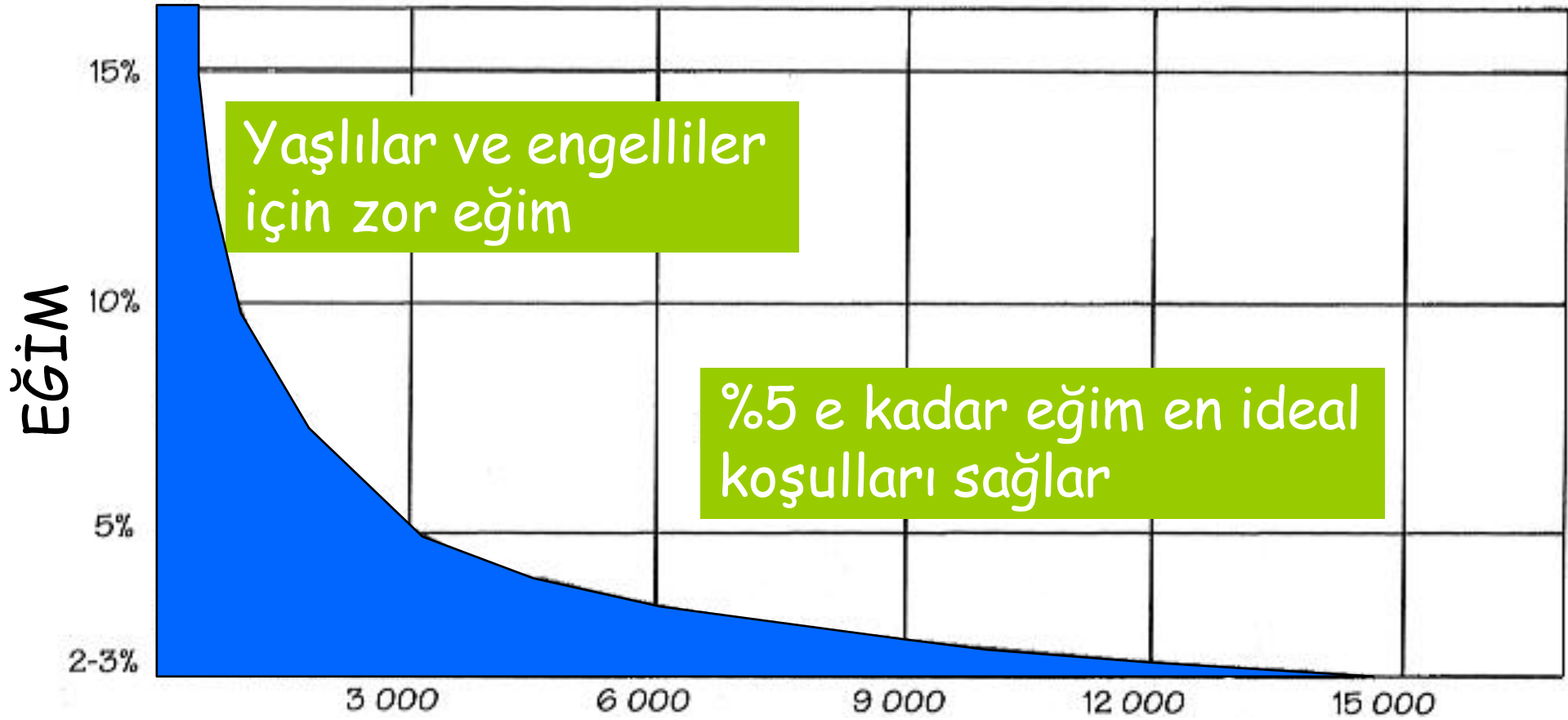
BASAMAK-RAMPA ÇÖZÜMLERİ





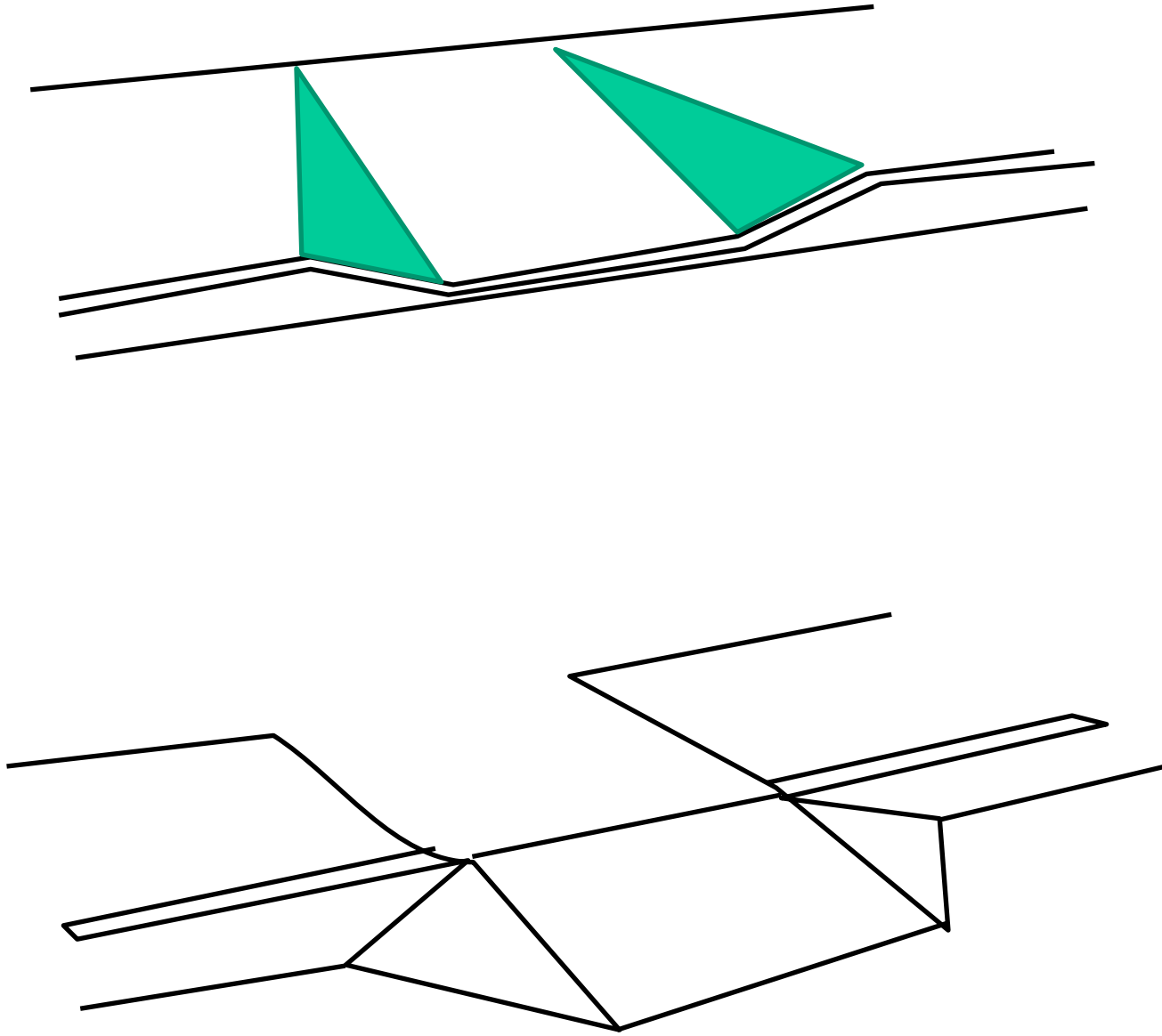
9 m. uzunluk (max)





RAMPA UZUNLUĞU

RAMPA DÜZENLEME ŞEKİLLERİ



RAMPA DÜZENLEME ŞEKİLLERİ

