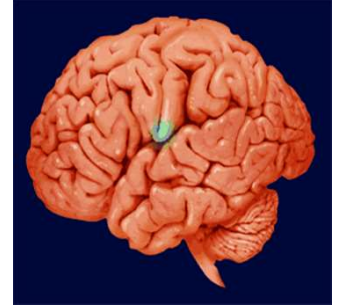


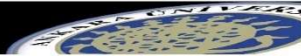
# AED 310

## İSTATİSTİK



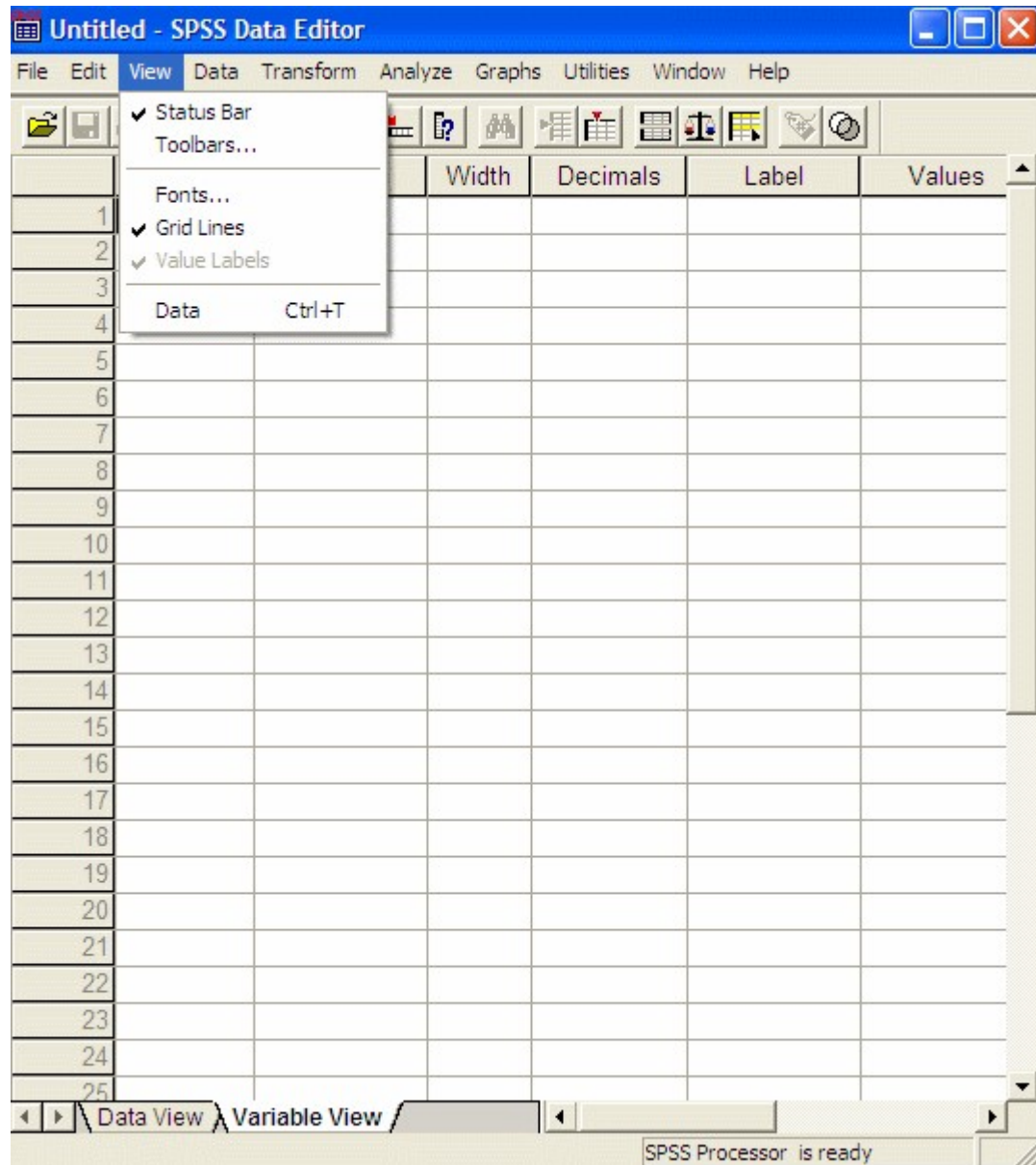


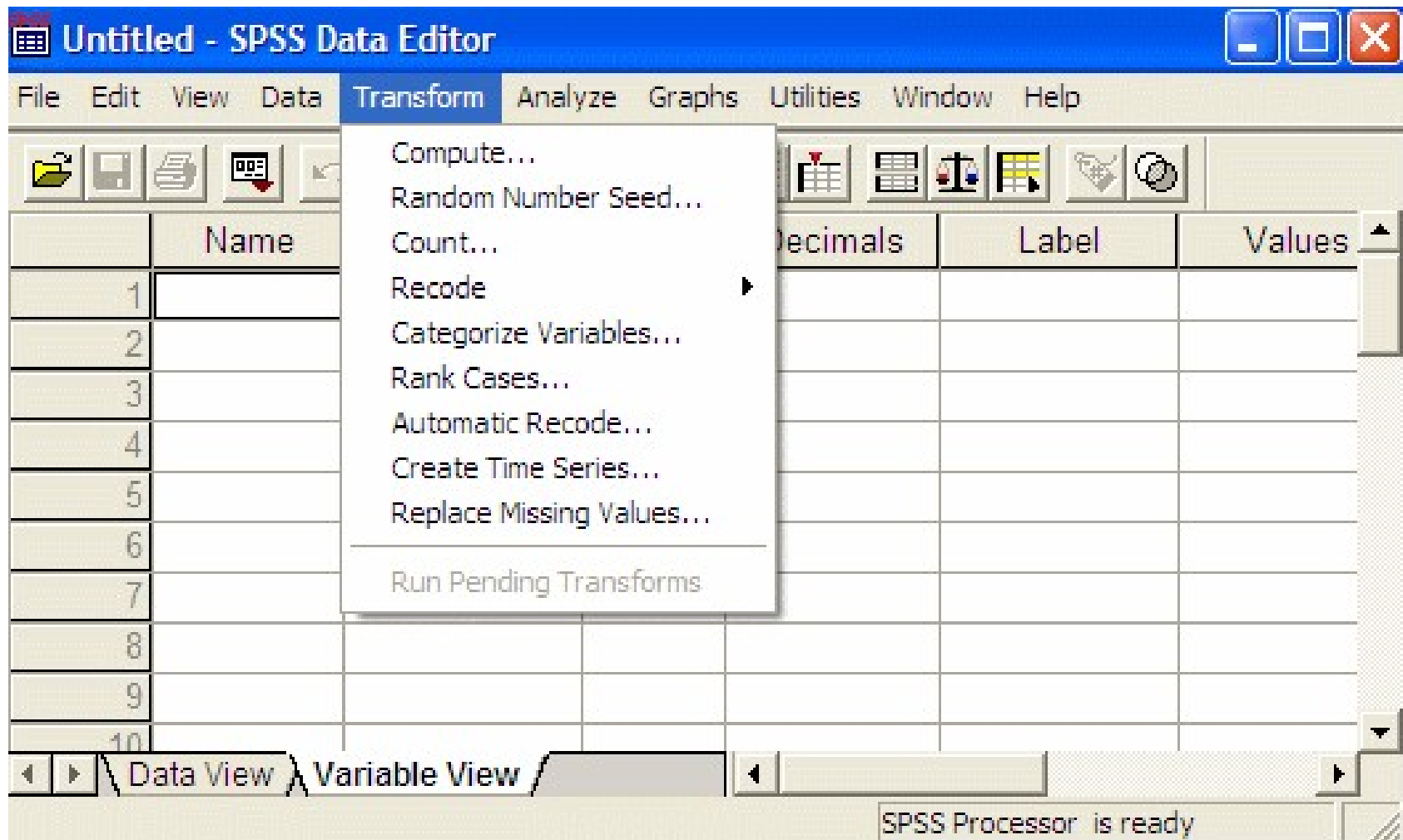
**SPOR BİLİMLERİ FAKÜLTESİ**

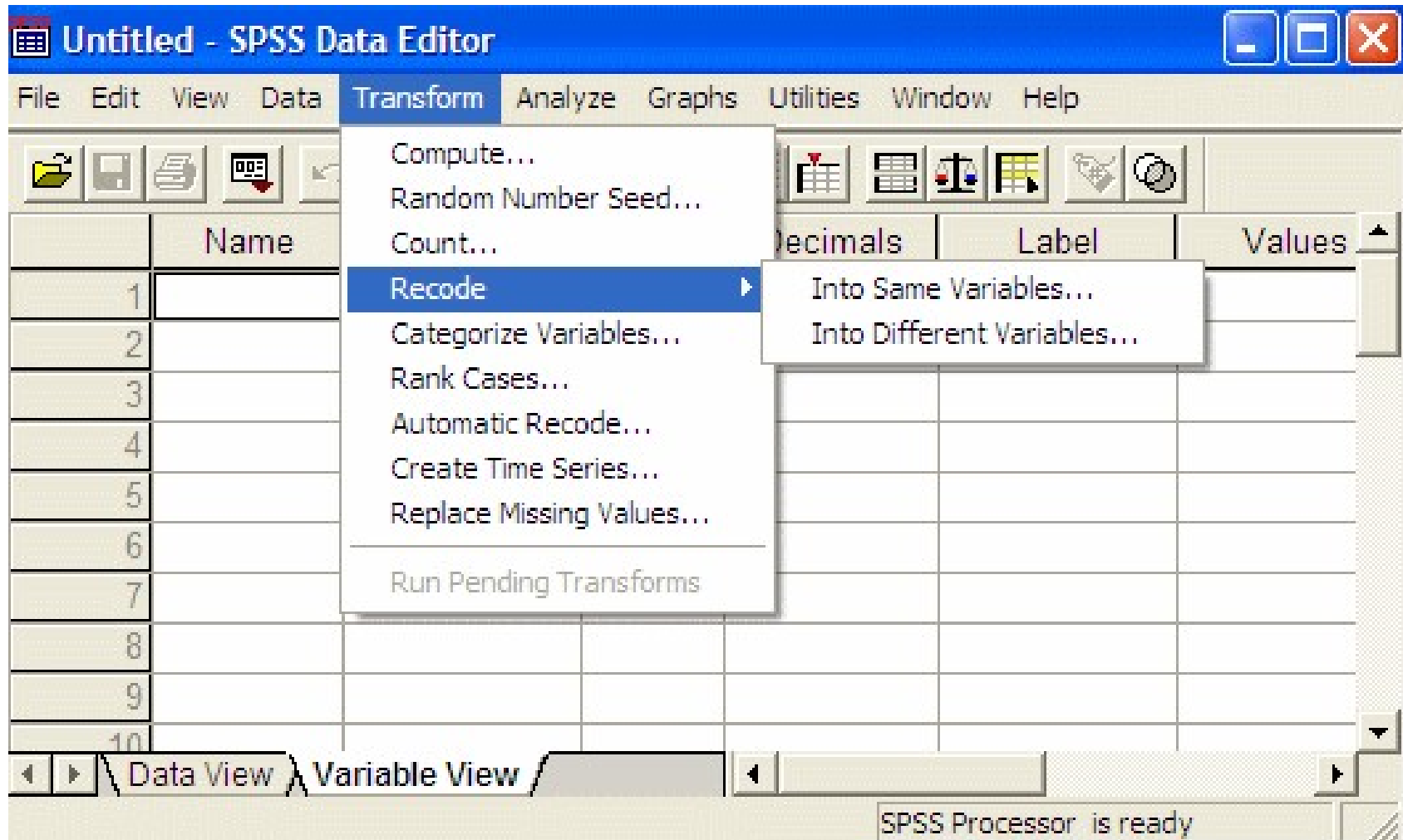


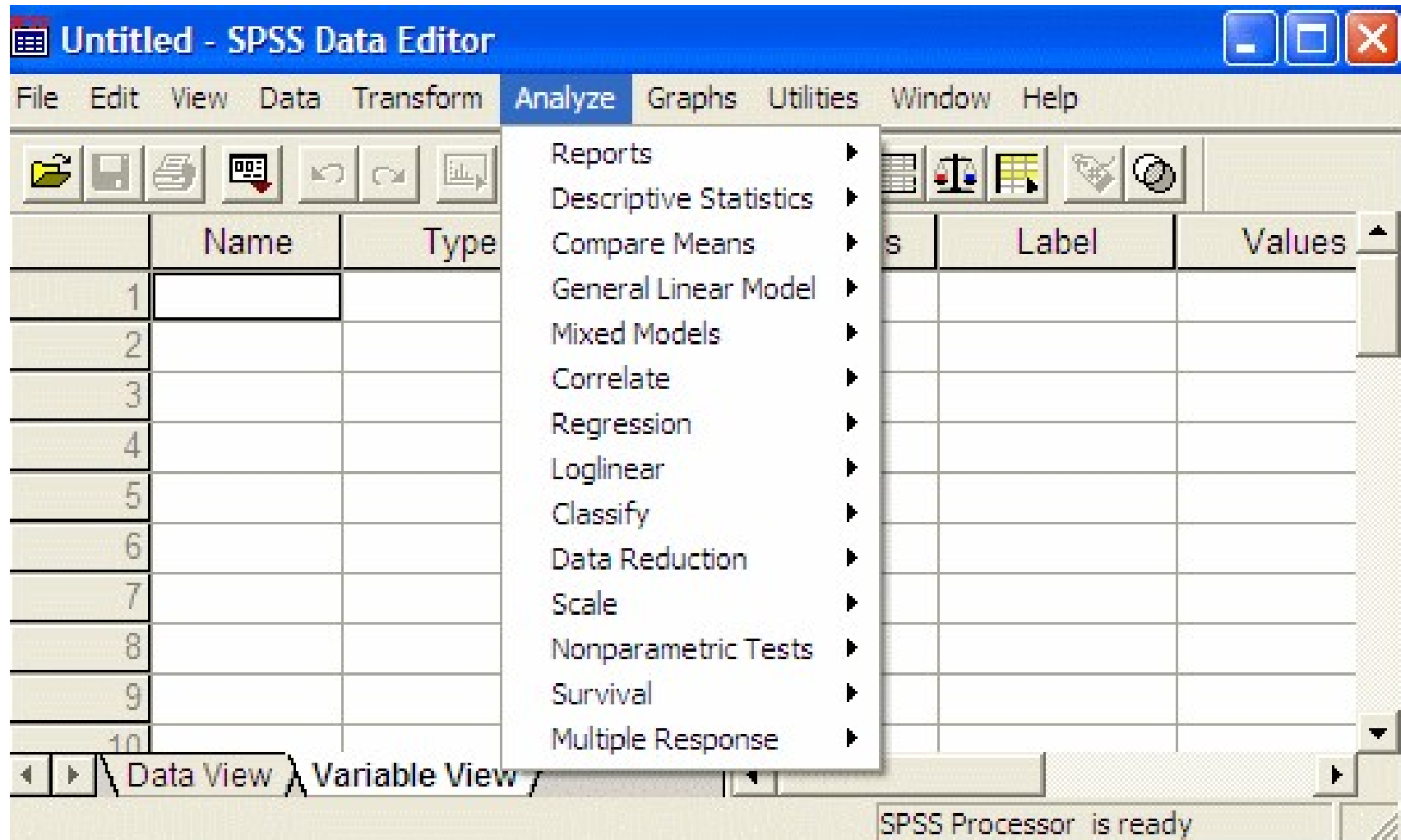


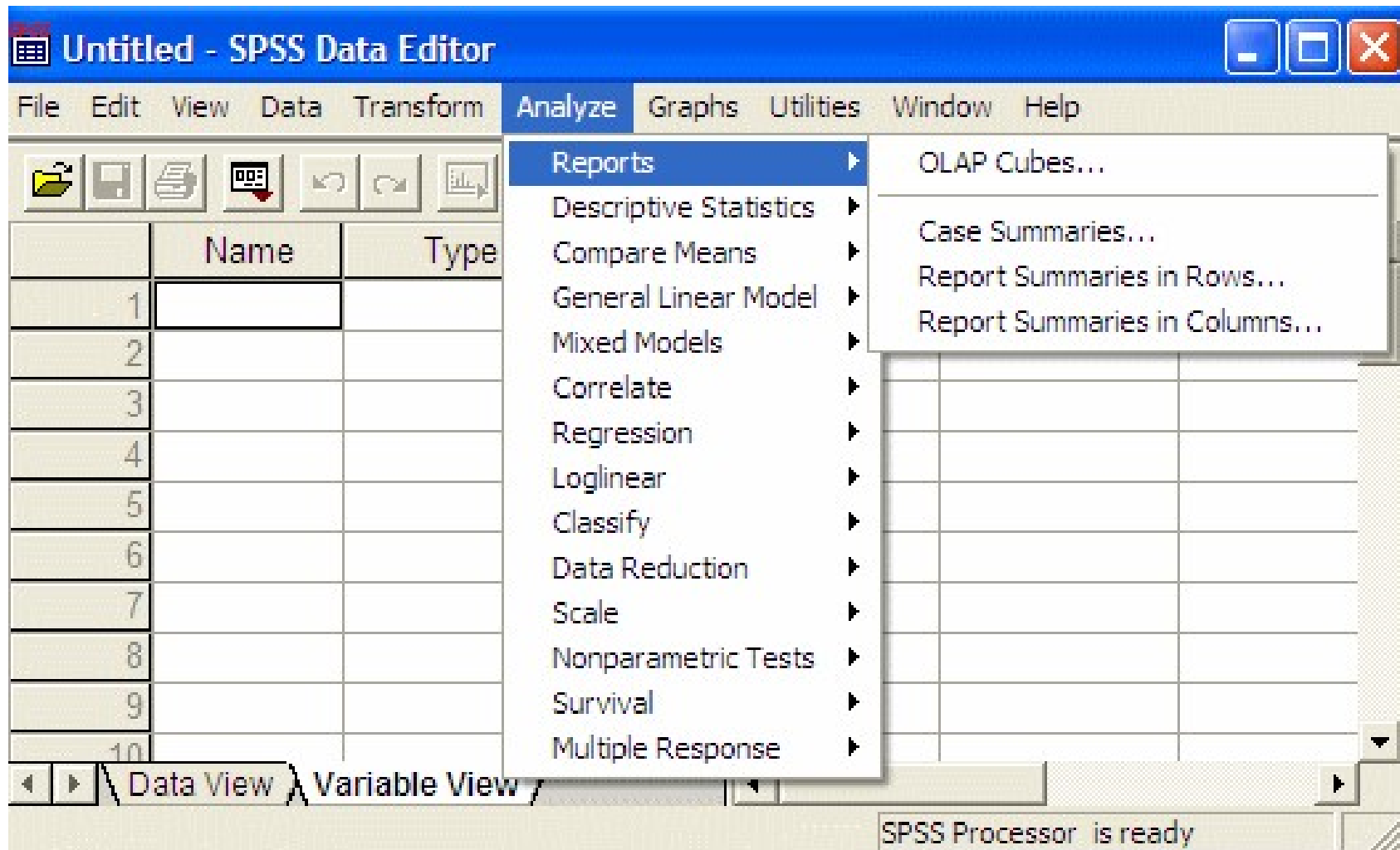
Kisayol  
spisswin



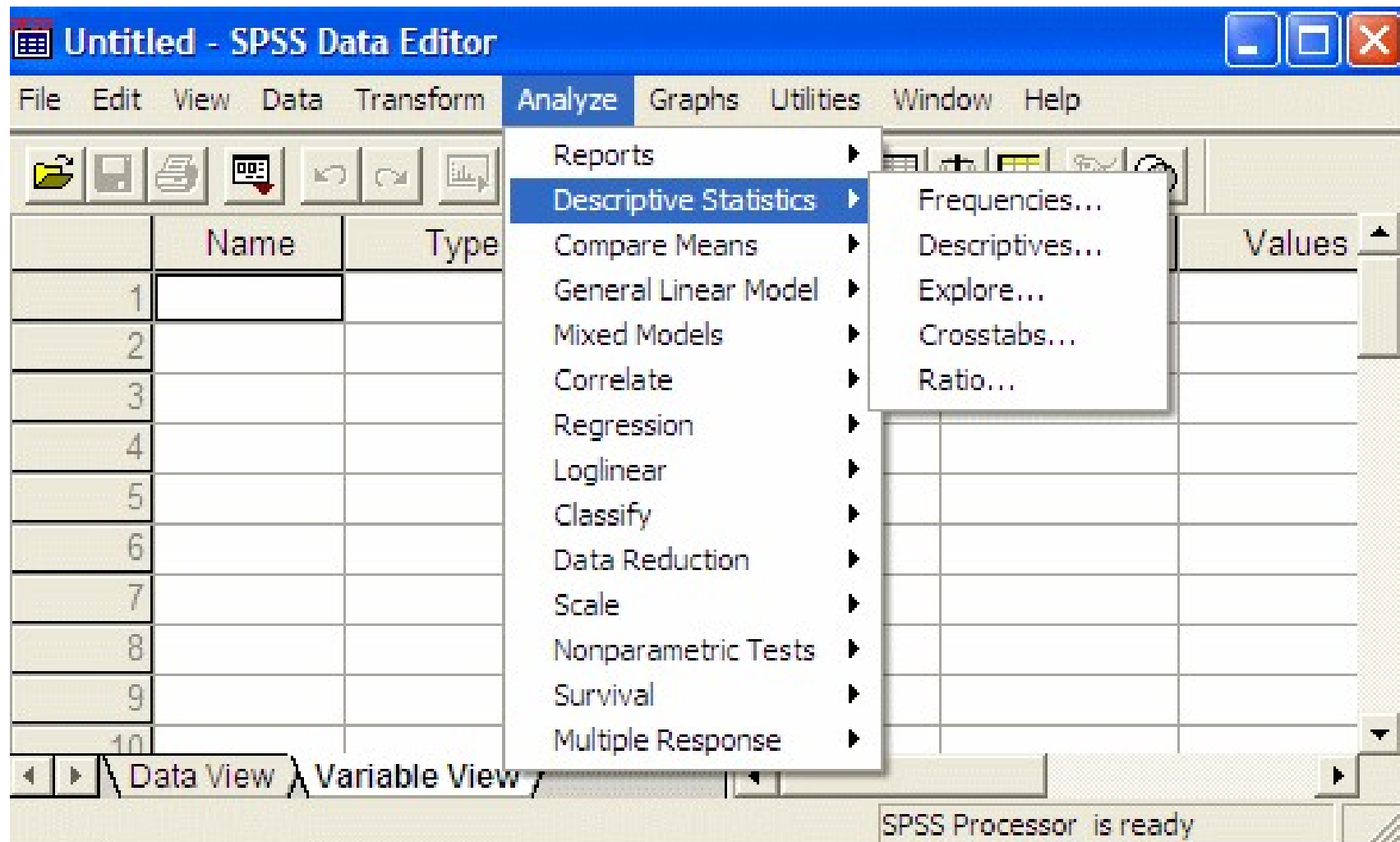


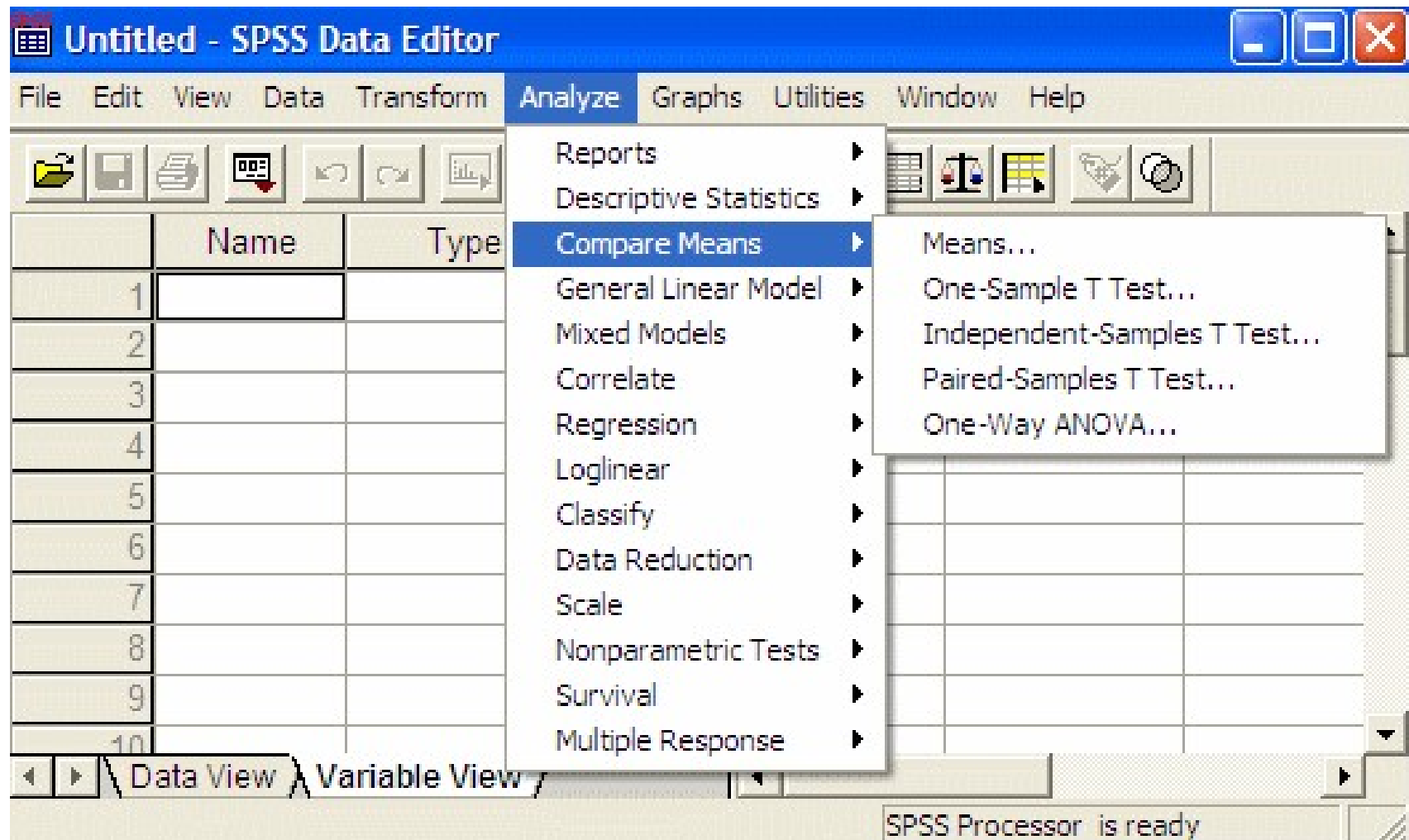


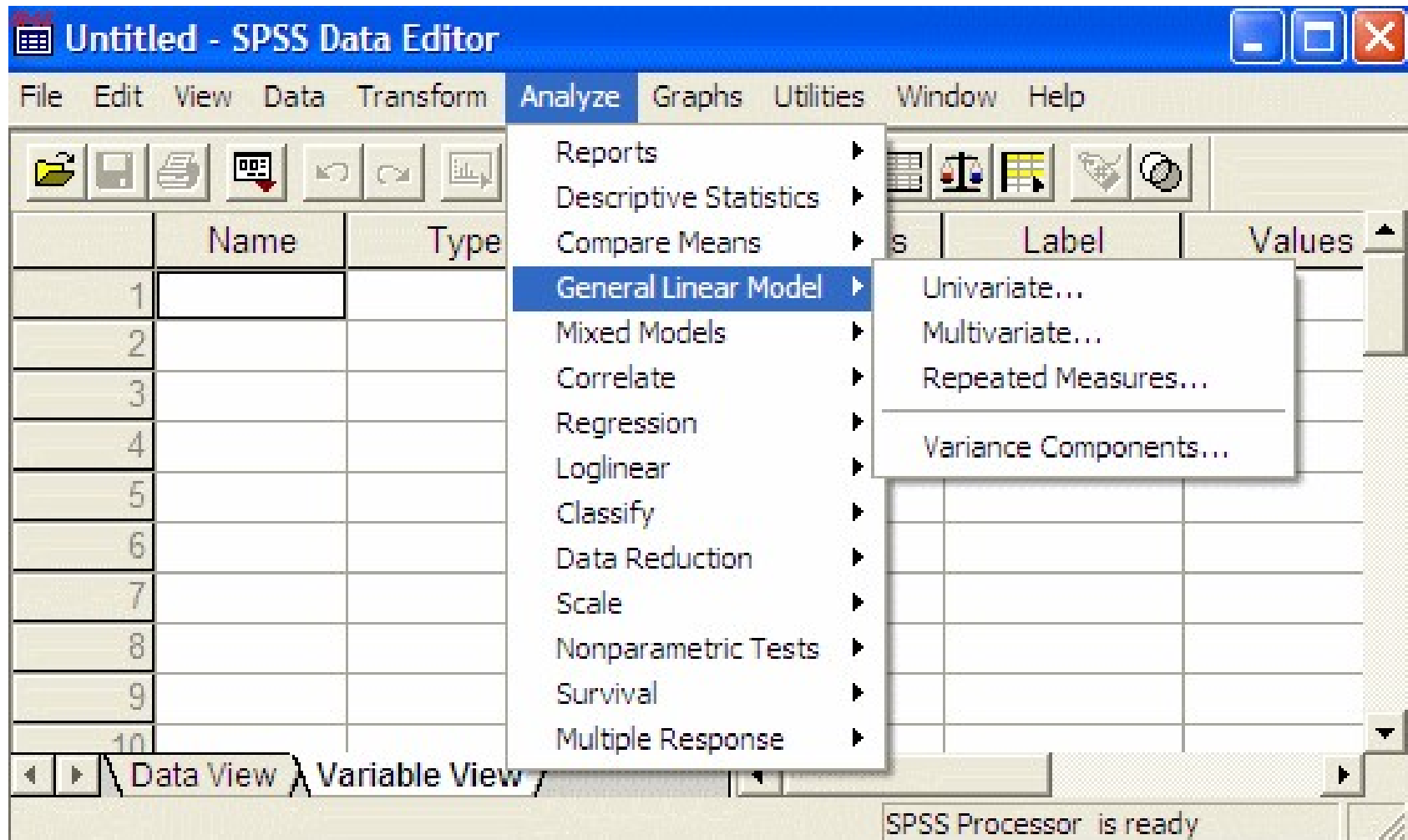


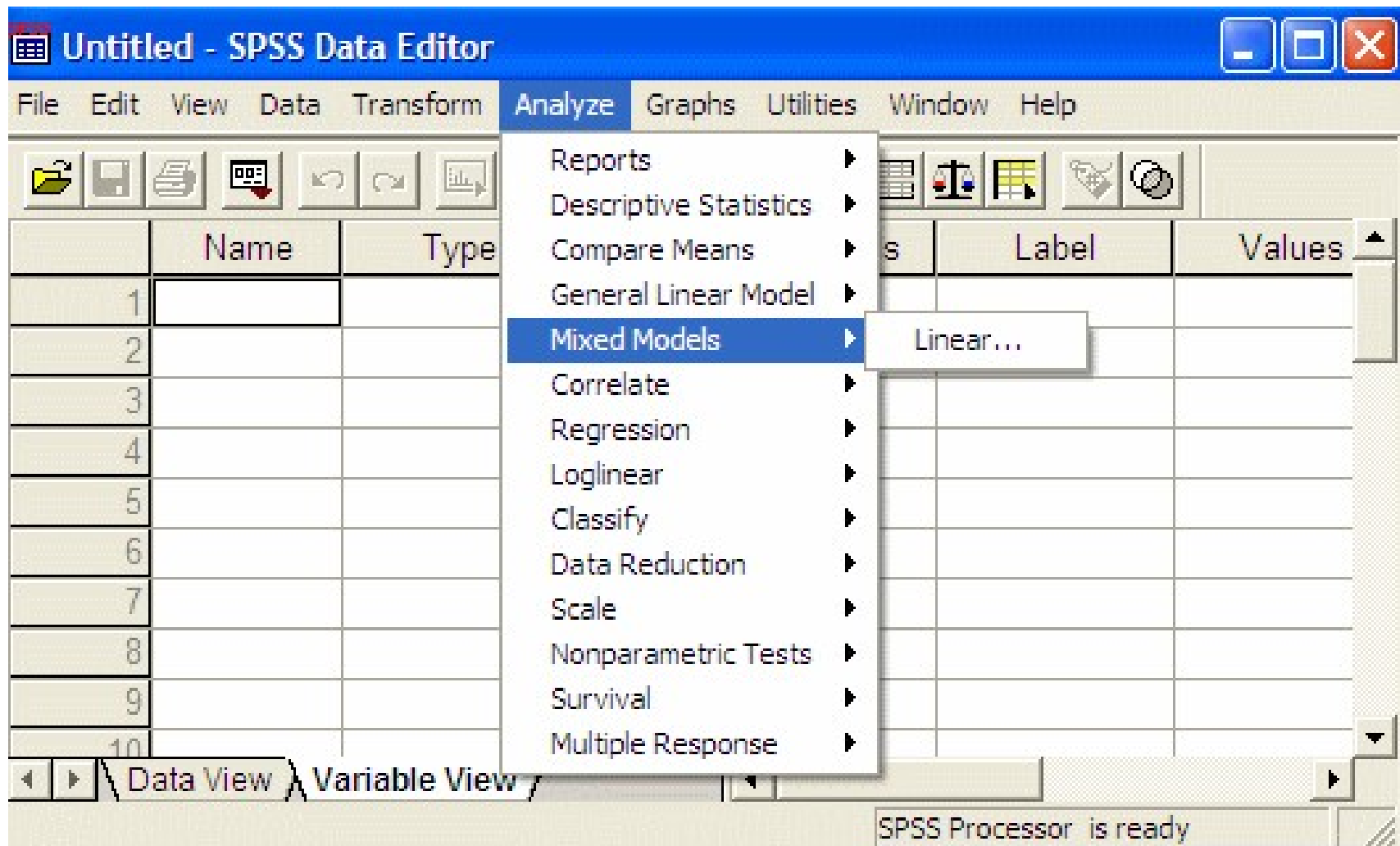


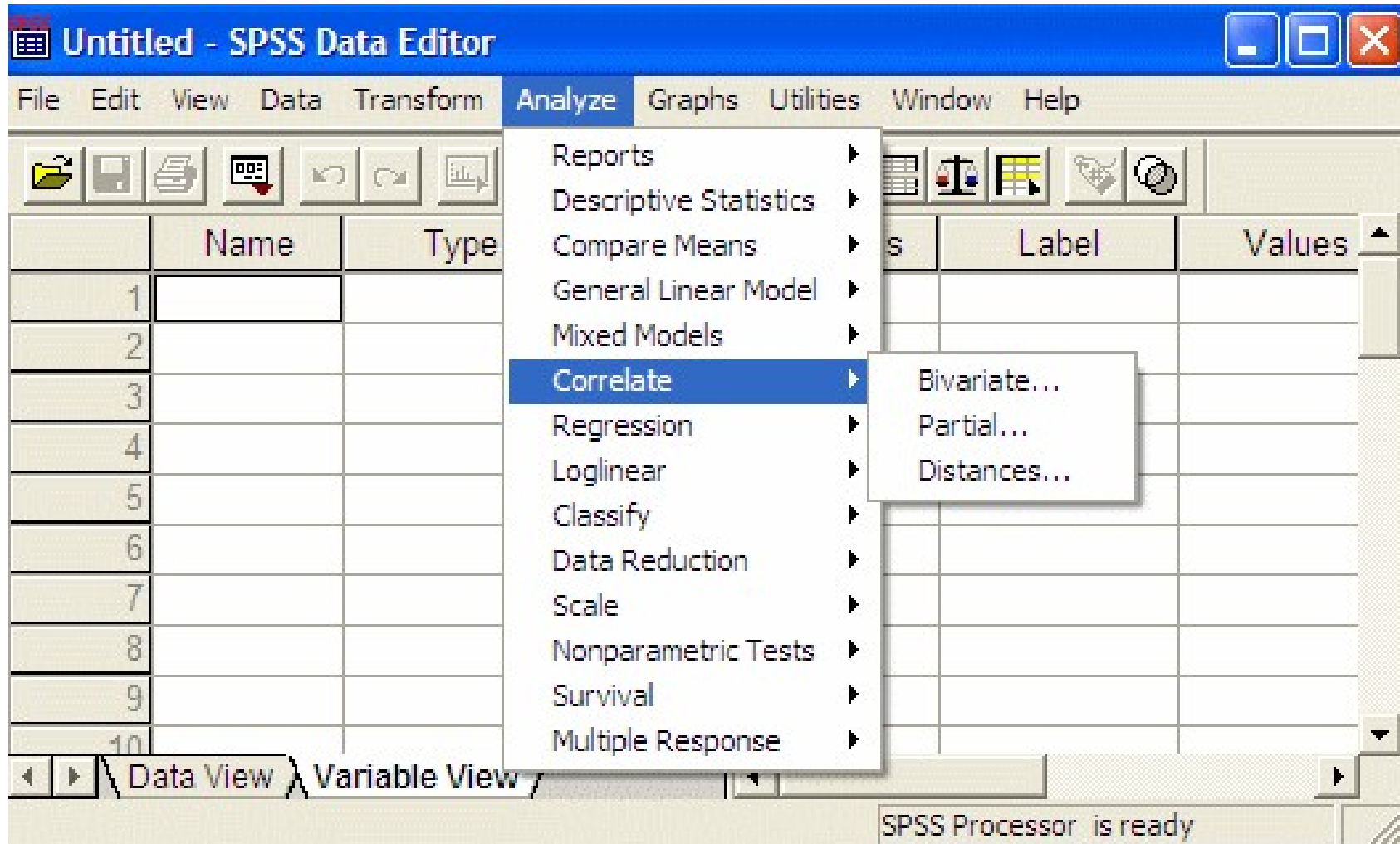


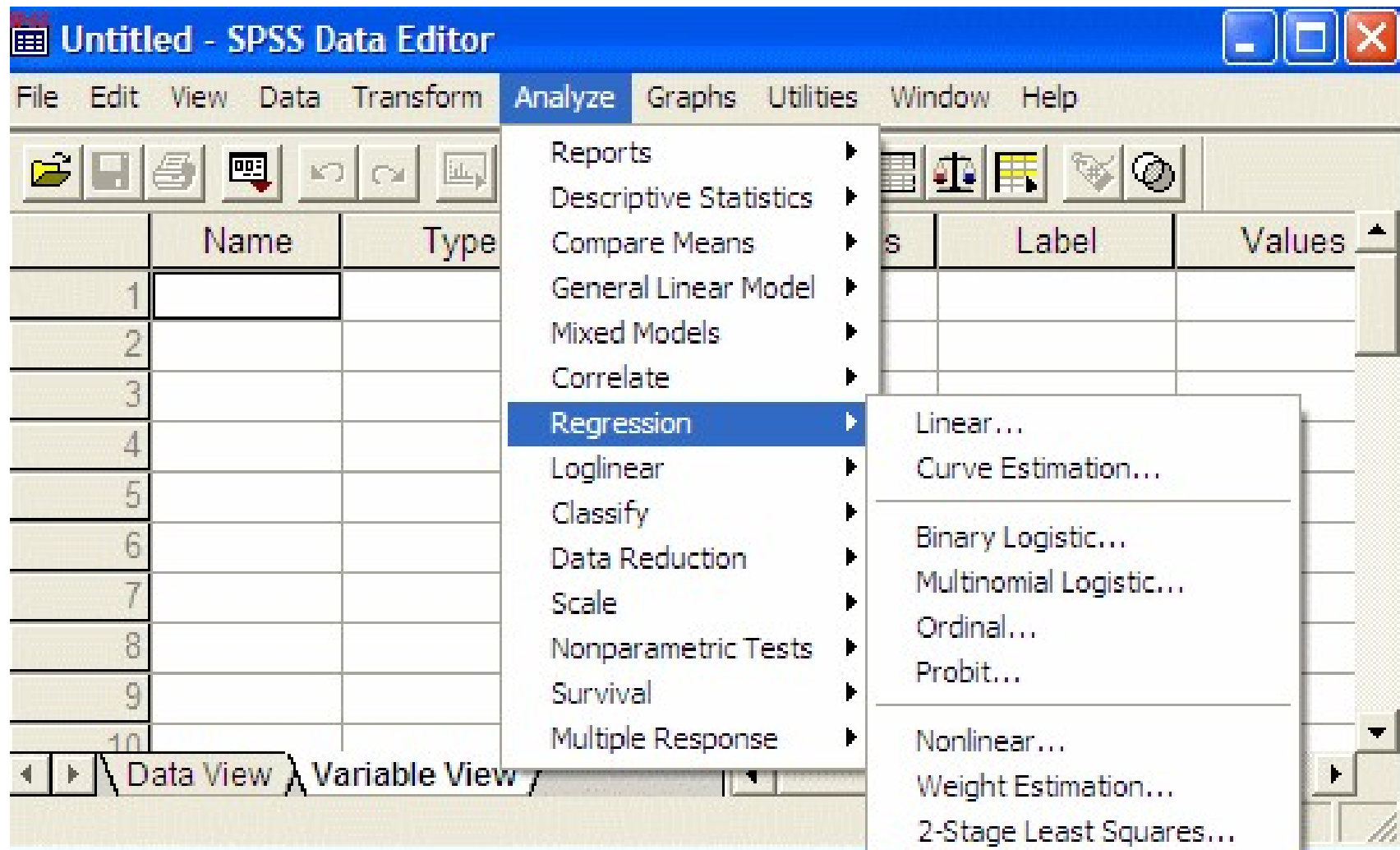


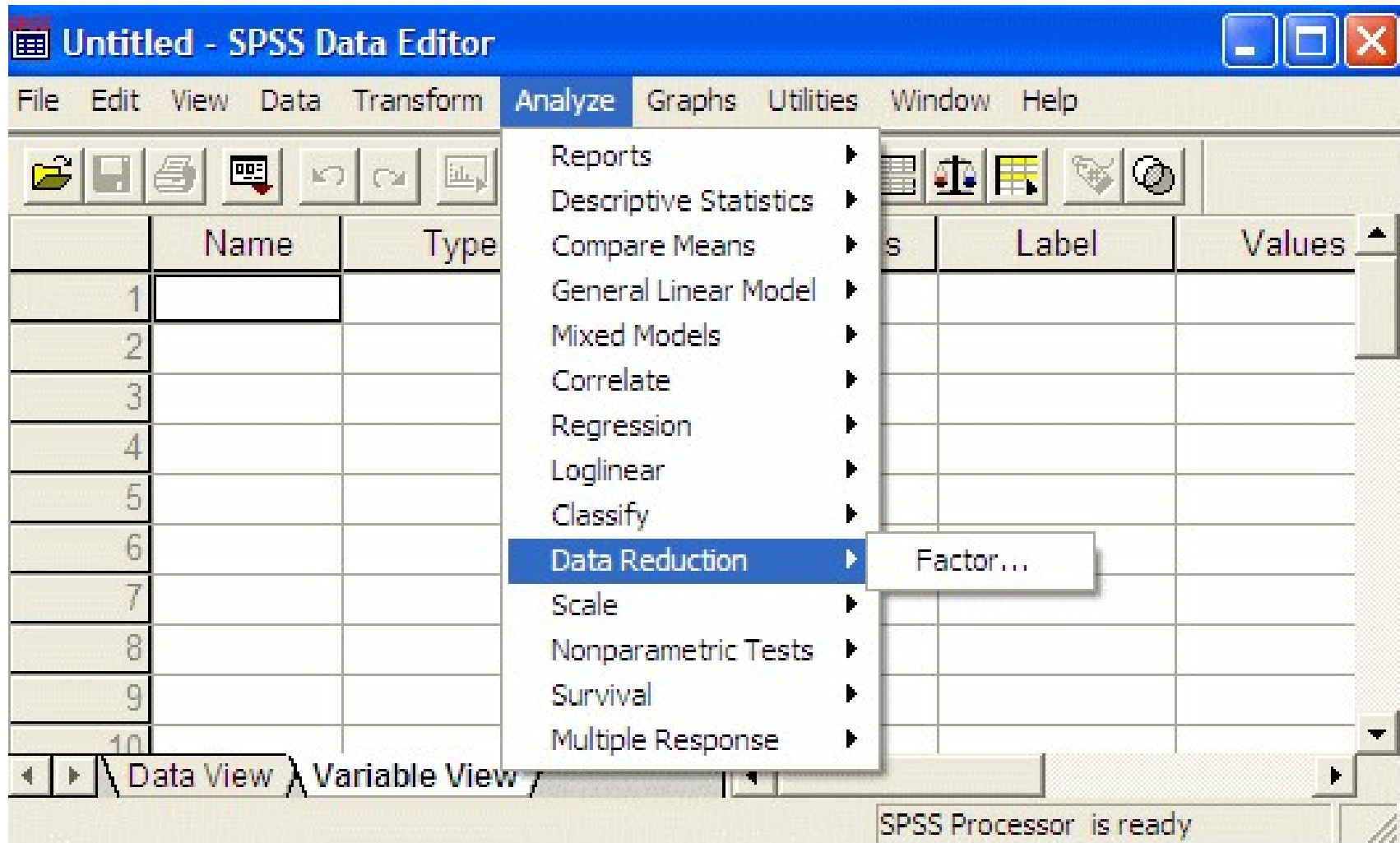












Untitled - SPSS Data Editor

File Edit View Data Transform Analyze Graphs Utilities Window Help

Reports  
Descriptive Statistics  
Compare Means  
General Linear Model  
Mixed Models  
Correlate  
Regression  
Loglinear  
Classify  
Data Reduction  
Scale  
Nonparametric Tests  
Survival  
Multiple Response

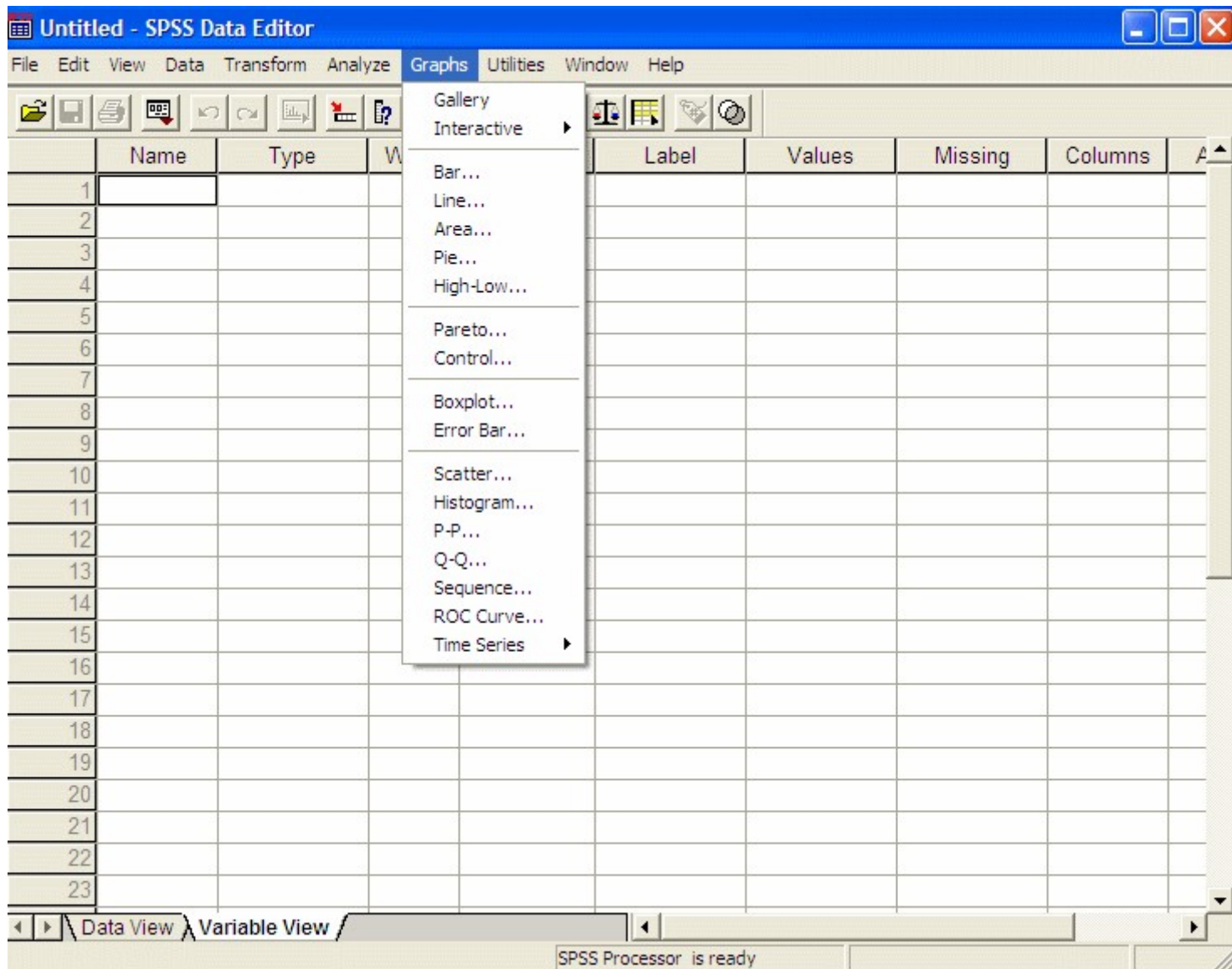
Chi-Square...  
Binomial...  
Runs...  
1-Sample K-S...  
2 Independent Samples...  
K Independent Samples...  
2 Related Samples...  
K Related Samples...

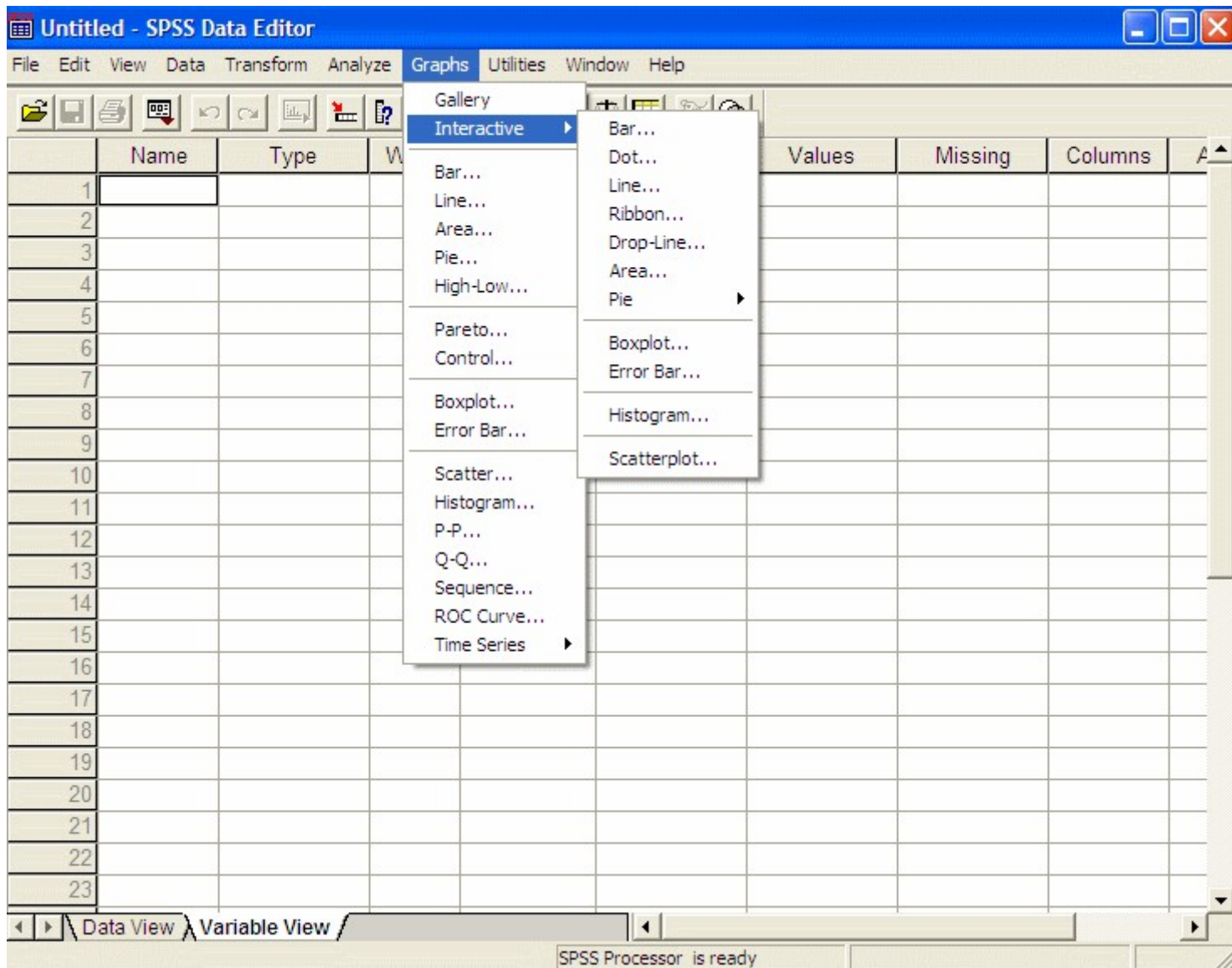
	Name	Type	Label	Values	Missing	Columns	A
1							
2							
3							
4							
5							
6							
7							
8							
9							
10							
11							
12							
13							
14							
15							
16							
17							
18							
19							
20							
21							
22							
23							

Data View Variable View

SPSS Processor is ready







Untitled - SPSS Data Editor

File Edit View Data Transform Analyze Graphs Utilities Window Help

Variables...  
File Info  
Define Sets...  
Use Sets...  
Run Script...  
Menu Editor ...

	Name	Type	Width	Label	Values	Missing	Columns	A
1								
2								
3								
4								
5								
6								
7								
8								
9								
10								
11								
12								
13								
14								
15								
16								
17								
18								
19								
20								
21								
22								
23								

Data View Variable View

SPSS Processor is ready

Untitled - SPSS Data Editor

File Edit View Data Transform Analyze Graphs Utilities Window Help

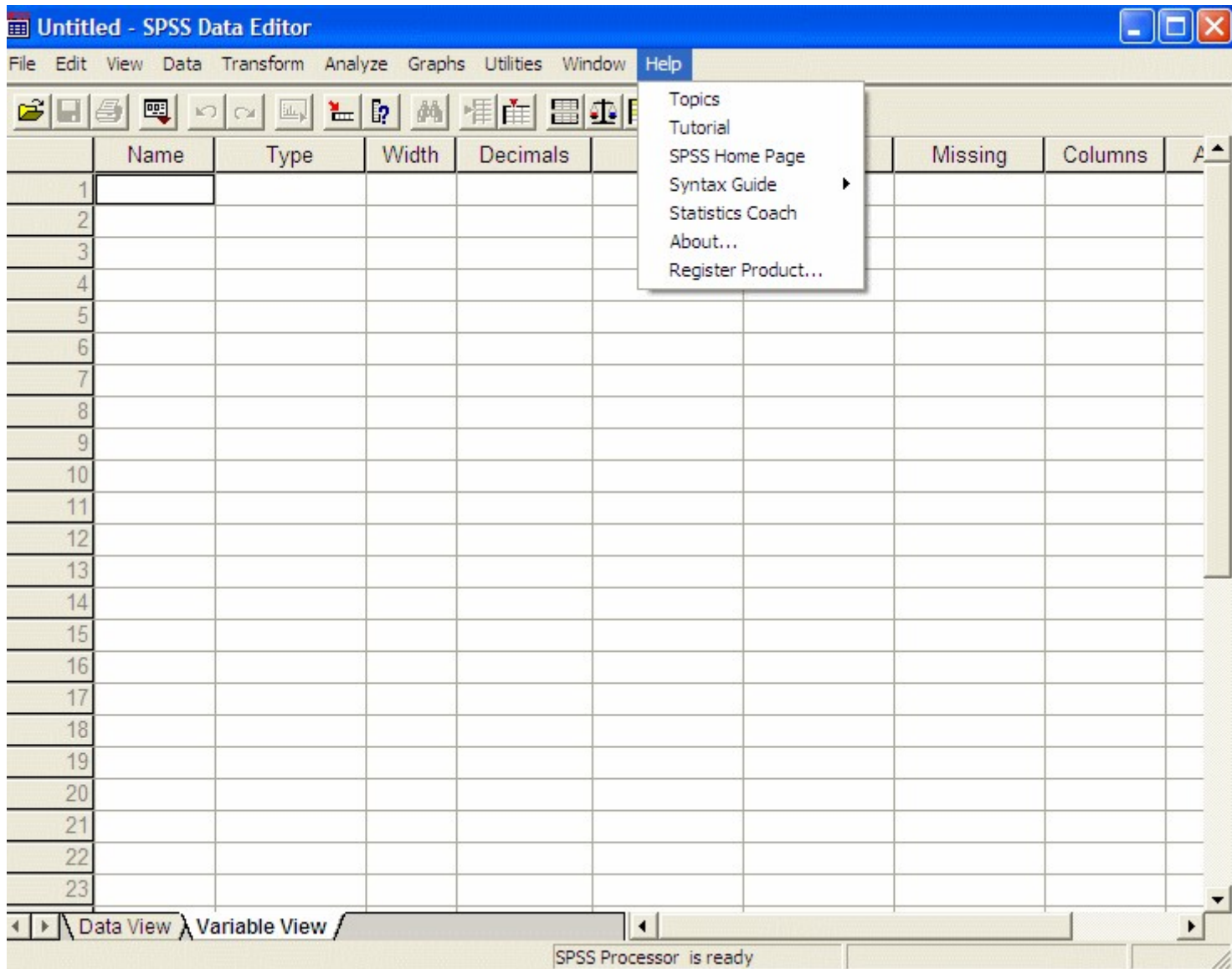
Minimize All Windows

1 Untitled - SPSS Data Editor

	Name	Type	Width	Decima	Missing	Columns	A
1							
2							
3							
4							
5							
6							
7							
8							
9							
10							
11							
12							
13							
14							
15							
16							
17							
18							
19							
20							
21							
22							
23							

Data View Variable View

SPSS Processor is ready



**Untitled - SPSS Data Editor**

File Edit View Data Transform Analyze Graphs Utilities Window Help

New ▶  
 Open ▶  
**Open Database ▶**  
 Read Text Data

Save Ctrl+S  
 Save As...

Display Data Info...  
 Apply Data Dictionary...  
 Cache Data...

Print... Ctrl+P  
 Print Preview

Switch Server...  
 Stop Processor Ctrl+,  
 Recently Used Data ▶  
 Recently Used Files ▶

Exit

**New Query ...**  
 Edit Query ...  
 Run Query ...

Decimals Label

15					
16					
17					



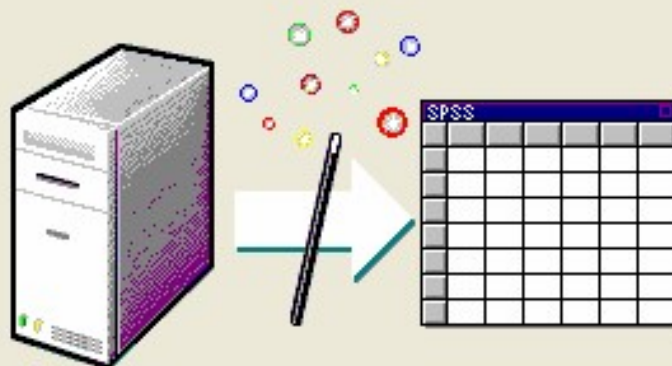


## Welcome To the Database Wizard!

This wizard will help you select the data elements you wish to work with during your SPSS session.

Select Data Source:

From which data source(s) would you like to retrieve data?



- dBASE Dosyaları
- dBASE Files
- Excel Dosyaları
- Excel Files
- MS Access Database
- MS Access Veritabanı
- Visio Database Samples

Add Data Source...

< Geri İleri >

İptal

Yardım

## Database Wizard

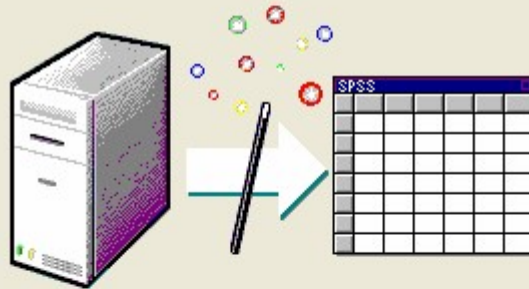


# Welcome To the Database Wizard!

This wizard will help you select the data elements you wish to work with during your SPSS session.

Select Data Source:

From which data source(s) would you like to retrieve data?



- dBASE Dosyaları
- dBASE Files
- Excel Dosyaları
- Excel Files**
- MS Access Database
- MS Access Veritabanı
- Visio Database Samples



Add Data Source...

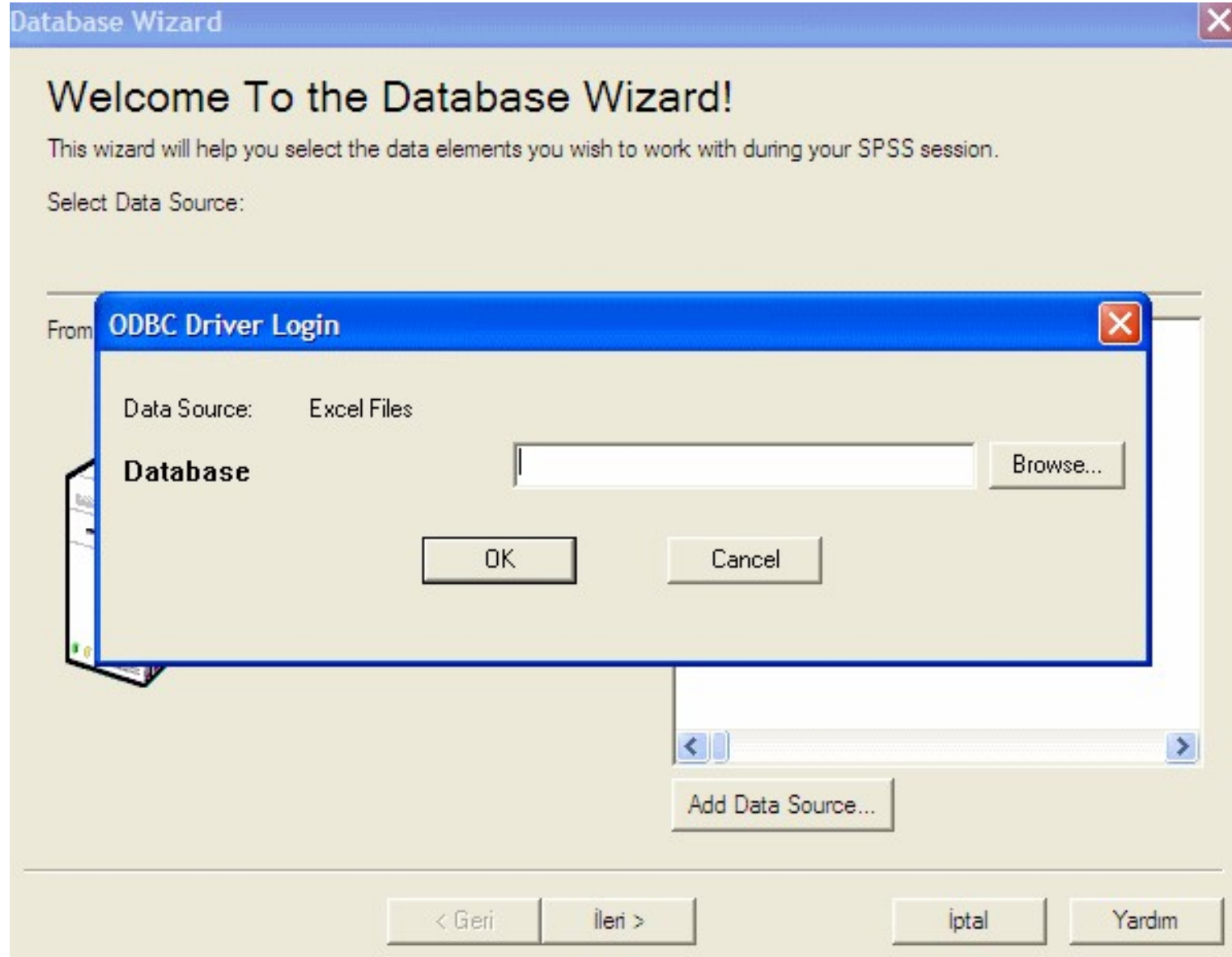
< Geri

İleri >

İptal

Yardım





95 VS 05 - 7 10 YAŞ COMPARE - SPSS Data Editor

File Edit View Data Transform Analyze Graphs Utilities Window Help

	Name	Type	Width	Decimals	Label	Values	Missing	Columns	Align	Measure
1	group	Numeric	8	2	7-10 YAS 199	{1.00, 1995 G	None	8	Right	Scale
2	boy	Numeric	8	2	BOY CM	None	None	8	Right	Scale
3	kilo	Numeric	8	2	KILO KG	None	None	8	Right	Scale
4	bmi	Numeric	8	2	VUCUT KUTL	None	None	8	Right	Scale
5	skftotal	Numeric	8	2	SKINFOLD TO	None	None	8	Right	Scale
6										
7										
8										
9										
10										
11										
12										
13										
14										
15										
16										
17										

Data View Variable View

SPSS Processor is ready

95 VS 05 - 7 10 YAŞ COMPARE - SPSS Data Editor

File Edit View Data Transform Analyze Graphs Utilities Window Help

	Name	Type	Width	Decimals	Label
1	group	Numeric	8	2	7-10 YAS 199
2	boy	Numeric	8	2	BOY CM
3	k				
4	k				
5	s				
6					
7					
8					
9					
10					
11					
12					
13					
14					
15					
16					
17					

### Variable Type

Numeric  
 Comma  
 Dot  
 Scientific notation  
 Date  
 Dollar  
 Custom currency  
 String

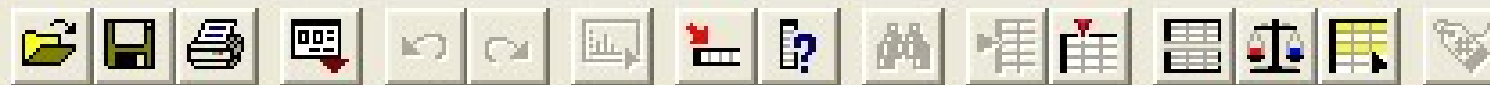
Width:   
 Decimal Places:

Data View Variable View

SPSS Process

95 VS 05 - 7 10 YAŞ COMPARE - SPSS Data Editor

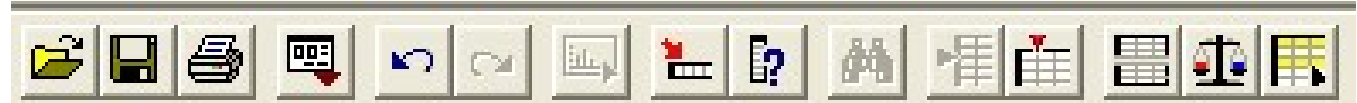
File Edit View Data Transform Analyze Graphs Utilities Window Help



	Name	Type	Width	Decimals	Label
1	group	Numeric	8	2	7-10 YAS 1
2	boy	Numeric	8	2	BOY CM
3	kilo	Numeric	8	2	KILO KG
4	bmi	Numeric	8	2	VUCUT KU
5	skftotal	Numeric	8	2	SKINFOLD
6					
7					
8					
9					
10					
11					
12					

95 VS 05 - 7 10 YAŞ COMPARE - SPSS Data Editor


File Edit View Data Transform Analyze Graphs Utilities Window Help



	Name	Type	Width	Decimals	Label
1	group	Numeric	8	2	7-10 YAŞ
2	boy	Numeric	8	2	BOY Cİ
3	kilo	Numeric	8	2	KILO KI
4	bmi	Numeric	8	2	VUCUT
5	skfttotal	Numeric	8	2	SKINFC
6					
7					
8					
9					
10					
11					
12					

95 VS 05 - 7 10 YAŞ COMPARE - SPSS Data Editor

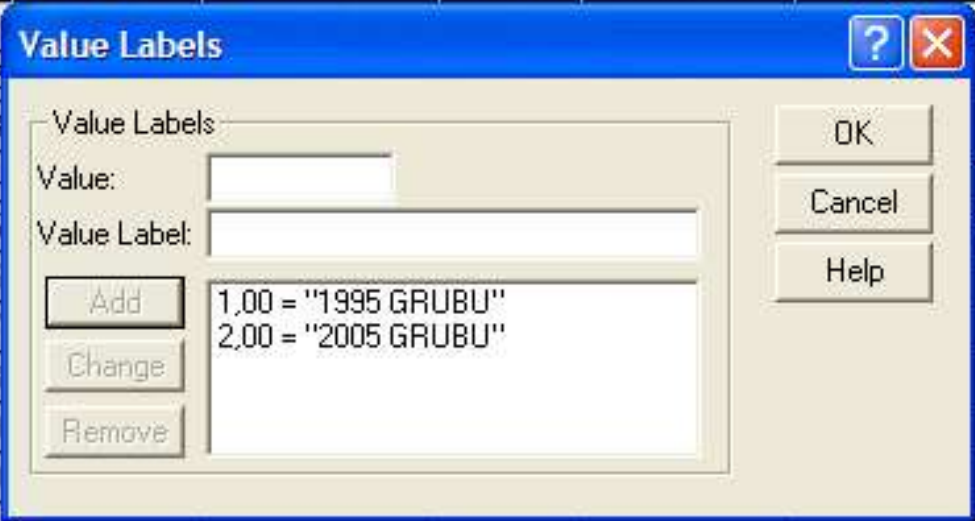
File Edit View Data Transform Analyze Graphs Utilities Window Help



	Name	Type	Width	Decimals	Label	Values
1	group	Numeric	8	2	7-10 YAS 1995 AND 2005	{1,00, 1995
2	boy	Numeric	8	2	BOY CM	None
3	kilo	Numeric	8	2	KILO KG	None
4	bmi	Numeric	8	2	VUCUT KUTLE INDEKSI	None
5	skfttotal	Numeric	8	2	SKINFOLD TOPLAM MM	None
6						
7						
8						
9						
10						

95 VS 05 - 7 10 YAŞ COMPARE - SPSS Data Editor

File Edit View Data Transform Analyze Graphs Utilities Window Help



The Value Labels dialog box is open, showing the following fields and controls:

- Value Labels:** A list box containing:
  - 1,00 = "1995 GRUBU"
  - 2,00 = "2005 GRUBU"
- Value:** An empty text input field.
- Value Label:** An empty text input field.
- Buttons:** Add, Change, Remove, OK, Cancel, and Help.

The background data table is partially visible:

	Name	Type	Width	Decimals	Label	Val
1					995 AND 2005	{1,00, 1
2						None
3						None
4					TLE INDEKSI	None
5					TOPLAM MM	None
6						
7						
8						
9						
10						
11						
12						
13						
14						
15						
16						
17						

Data View Variable View

SPSS Processor is ready

95 VS 05 - 7 10 YAŞ COMPARE - SPSS Data Editor

File Edit View Data Transform Analyze Graphs Utilities Window Help

	Name	Type	Width	Decimals	Label
1	group	Numeric	8	2	7-10 YAS 1995 AND 2005
2	boy				
3	kilo				
4	bmi				KUTLE INDEKSI
5	skftotal				LD TOPLAM MM
6					
7					
8					
9					
10					
11					
12					
13					
14					
15					

**Missing Values**

No missing values

Discrete missing values

Range plus one optional discrete missing value

Low:  High:

Discrete value:

OK Cancel Help









95 VS 05 - 7 10 YAŞ COMPARE - SPSS Data Editor

File Edit View Data Transform Analyze Graphs Utilities Window Help

Value Labels

	group	boy	kilo	bmi	skftotal	var
74	1,00	130,00	32,00	18,90	22,00	
75	1,00	140,00	59,00	30,10	64,00	
76	1,00	134,00	28,00	15,50	28,00	
77	1,00	145,00	32,00	15,20	24,00	
78	1,00	139,00	40,00	20,70	29,00	
79	1,00	138,00	32,00	16,80	43,00	
80	1,00	144,00	35,00	16,80	32,00	
81	2,00	125,00	31,00	19,80	75,00	
82	2,00	118,00	20,00	14,30	29,30	
83	2,00	122,00	31,00	20,50	76,00	
84	2,00	120,00	23,00	15,50	37,00	
85	2,00	123,00	22,00	14,10	29,00	
86	2,00	128,00	31,00	19,00	62,00	
87	2,00	124,00	28,00	18,30	78,00	
88	2,00	123,00	32,00	21,10	66,00	

Data View Variable View

Value Labels SPSS Processor is ready



95 VS 05 - 7 10 YAŞ COMPARE - SPSS Data Editor

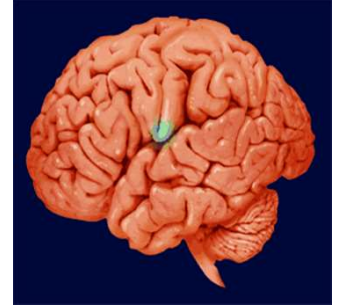
File Edit View Data Transform Analyze Graphs Utilities Window Help

1 : group 1

	group	boy	kilo	bmi	skftotal	var
74	1995 GR	130,00	32,00	18,90	22,00	
75	1995 GR	140,00	59,00	30,10	64,00	
76	1995 GR	134,00	28,00	15,50	28,00	
77	1995 GR	145,00	32,00	15,20	24,00	
78	1995 GR	139,00	40,00	20,70	29,00	
79	1995 GR	138,00	32,00	16,80	43,00	
80	1995 GR	144,00	35,00	16,80	32,00	
81	2005 GR	125,00	31,00	19,80	75,00	
82	2005 GR	118,00	20,00	14,30	29,30	
83	2005 GR	122,00	31,00	20,50	76,00	
84	2005 GR	120,00	23,00	15,50	37,00	
85	2005 GR	123,00	22,00	14,10	29,00	
86	2005 GR	128,00	31,00	19,00	62,00	
87	2005 GR	124,00	28,00	18,30	78,00	
88	2005 GR	123,00	32,00	21,10	66,00	

Data View Variable View

SPSS Processor is



**SPOR BİLİMLERİ FAKÜLTESİ**

