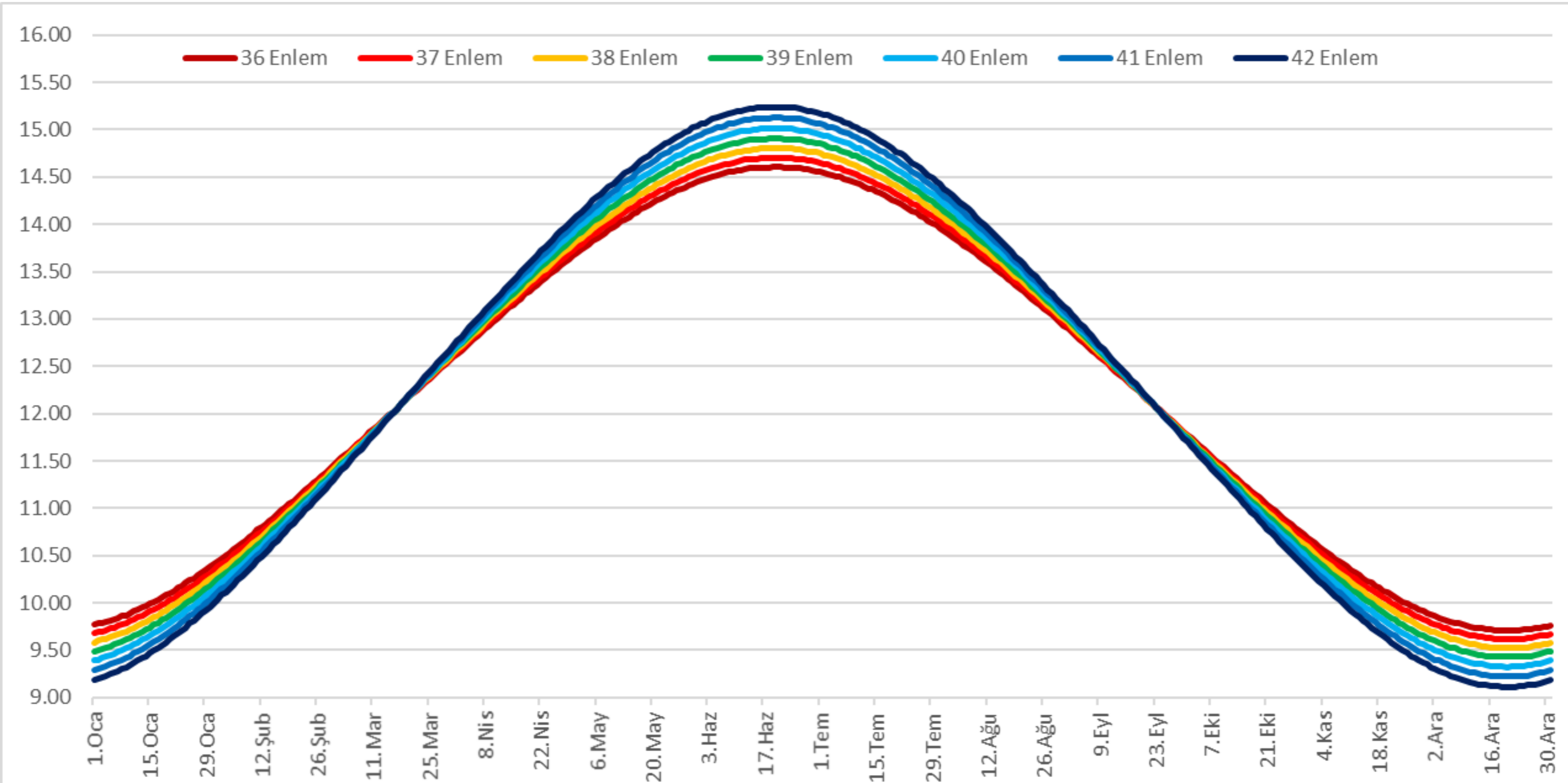


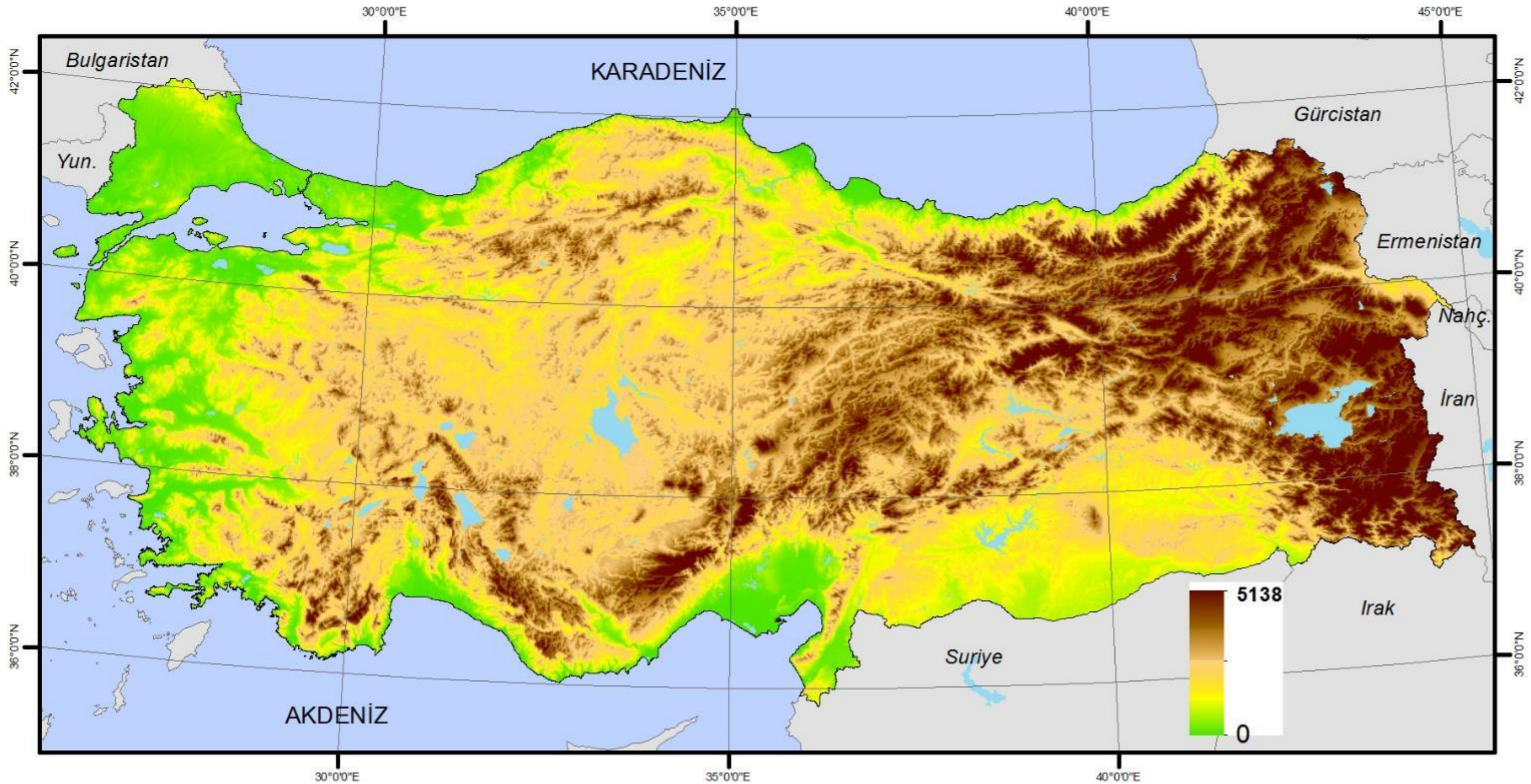
DÜNYA ve TÜRKİYE İKLİMİ

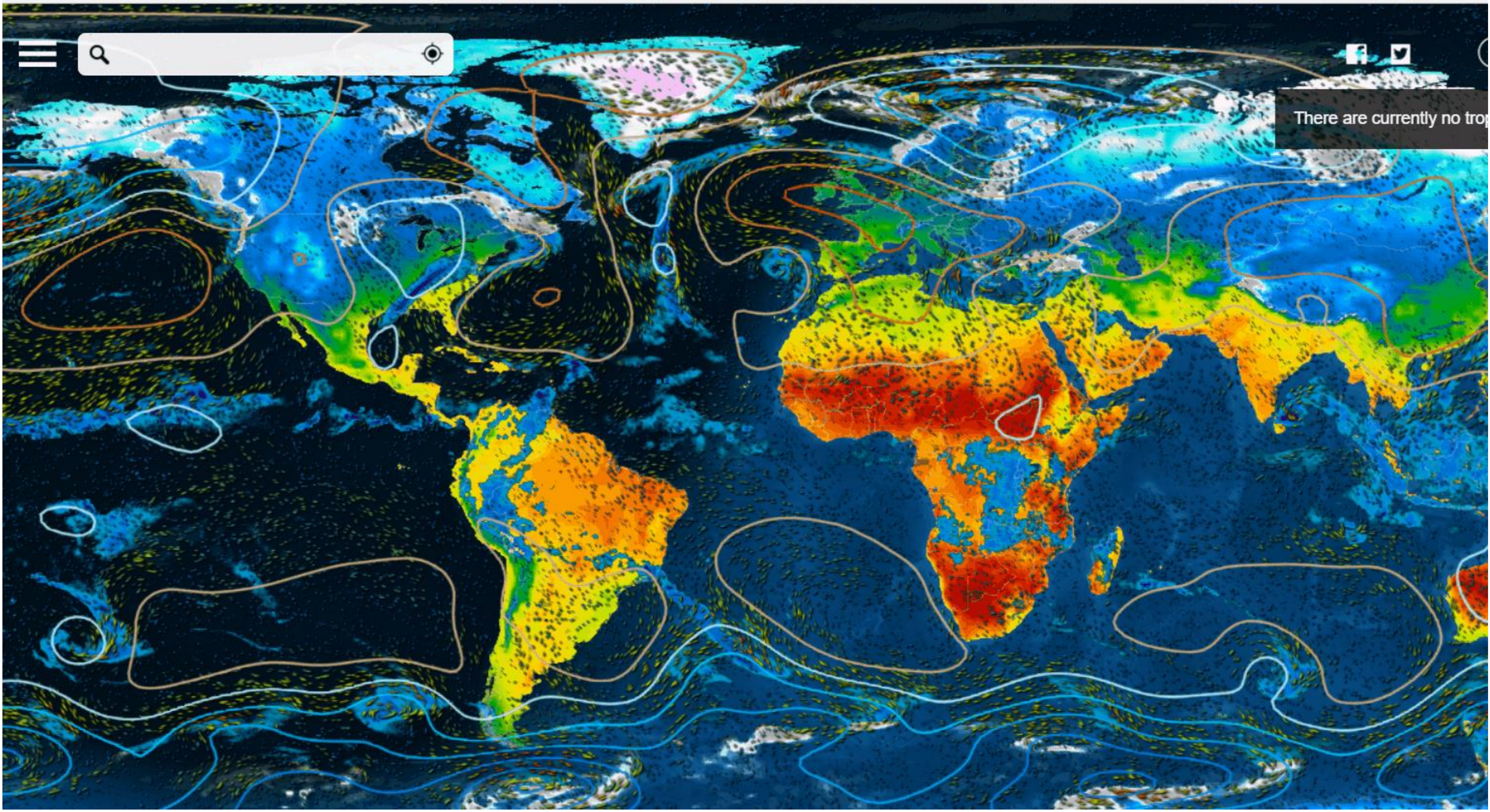
Yrd. Doç. Dr. Erkan Yılmaz

- Türkiye İklimini Etkileyen Etmenler
- Konumu
- Hava Kütlelerine Göre Konumu
- Rölyef Özellikleri
- Denizlere Göre Konumu



Baki Yükselti Uzaniş Hatları

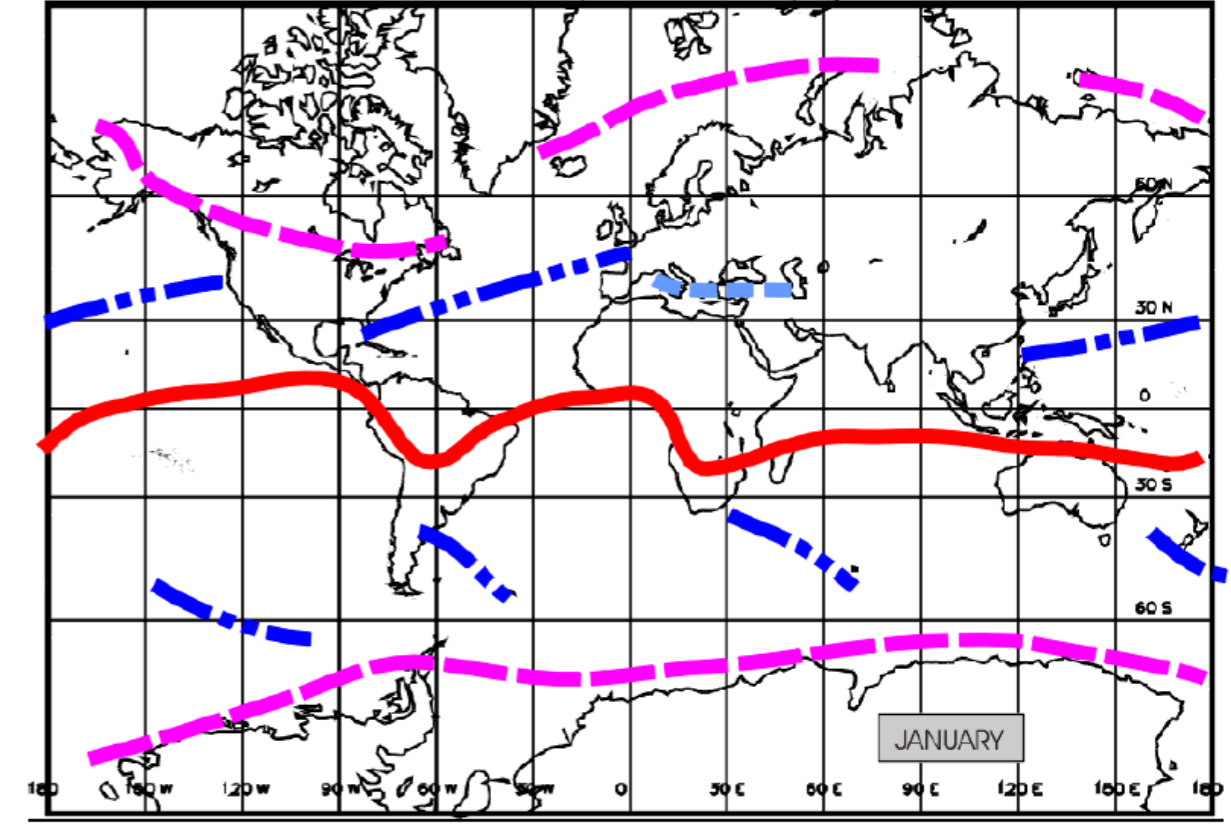




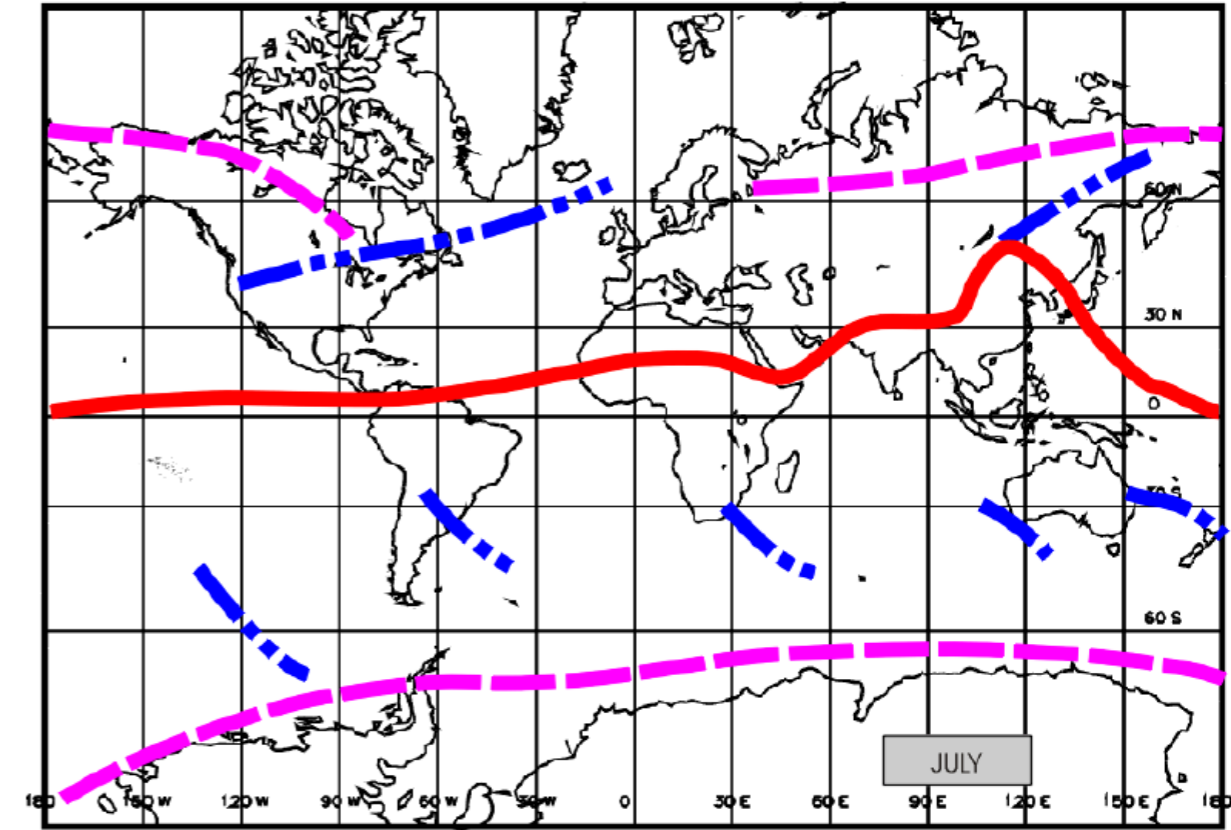
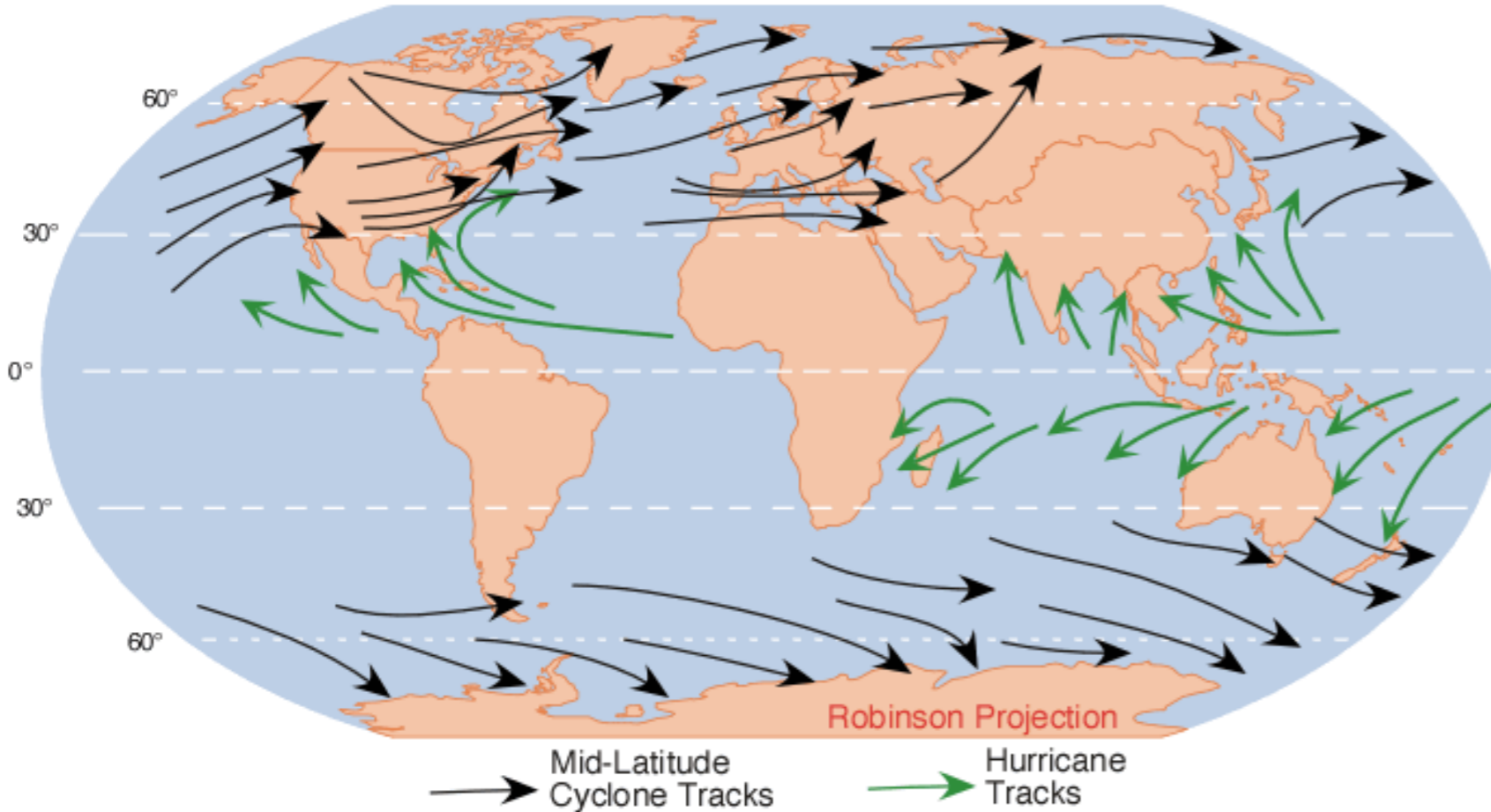
There are currently no trop



Şekil 2. Türkiye'yi etkileyen hava kütleleri (Yayvan M., Deniz A., 2000)



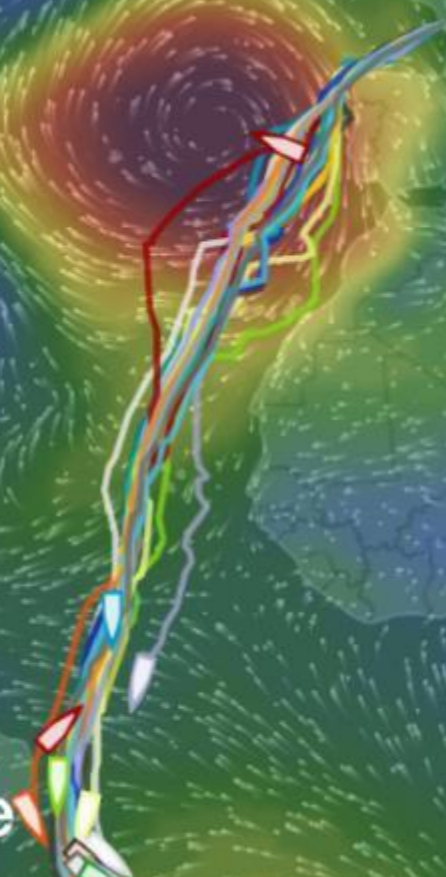
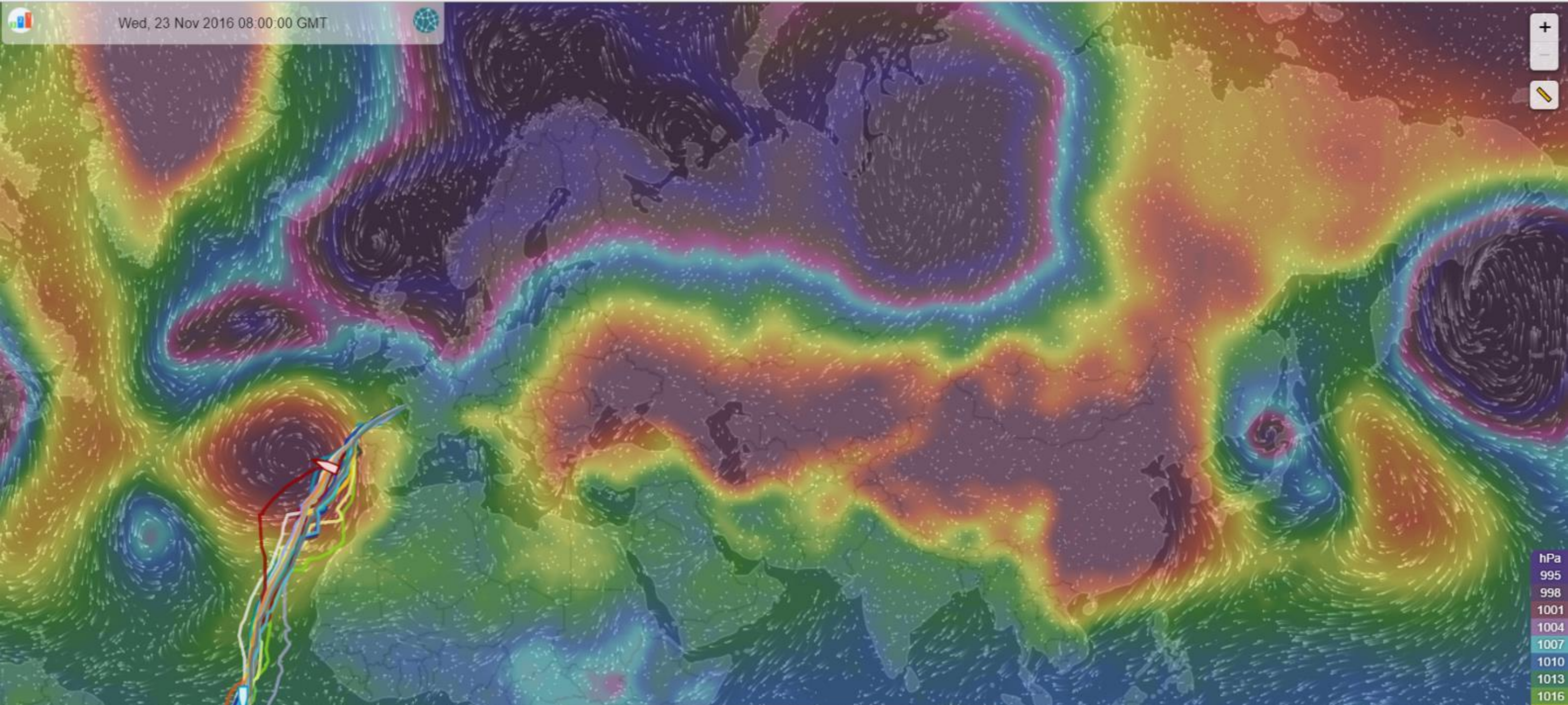
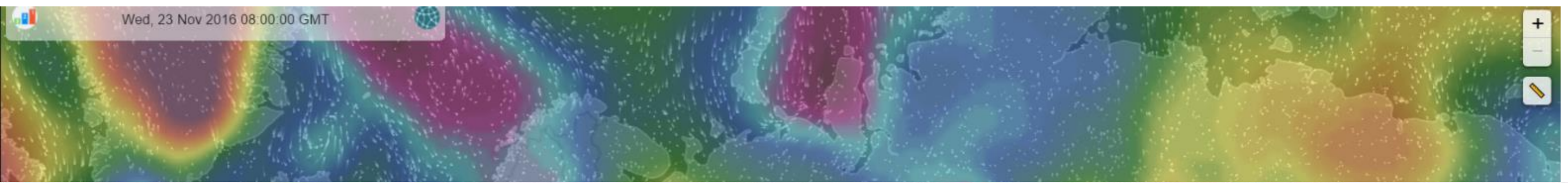
- INTERTROPICAL CONVERGENCE ZONE (ITCZ); INTERTROPICAL FRONT
- - - POLAR FRONT
- - - ARCTIC/ANTARCTIC FRONT
- - - MEDITERRANEAN FRONT



- INTERTROPICAL CONVERGENCE ZONE (ITCZ); INTERTROPICAL FRONT
- - - POLAR FRONT
- - - ARCTIC/ANTARCTIC FRONT

Wed, 23 Nov 2016 08:00:00 GMT

Wed, 23 Nov 2016 08:00:00 GMT



- 12h - 1h Now + 1h + 12h

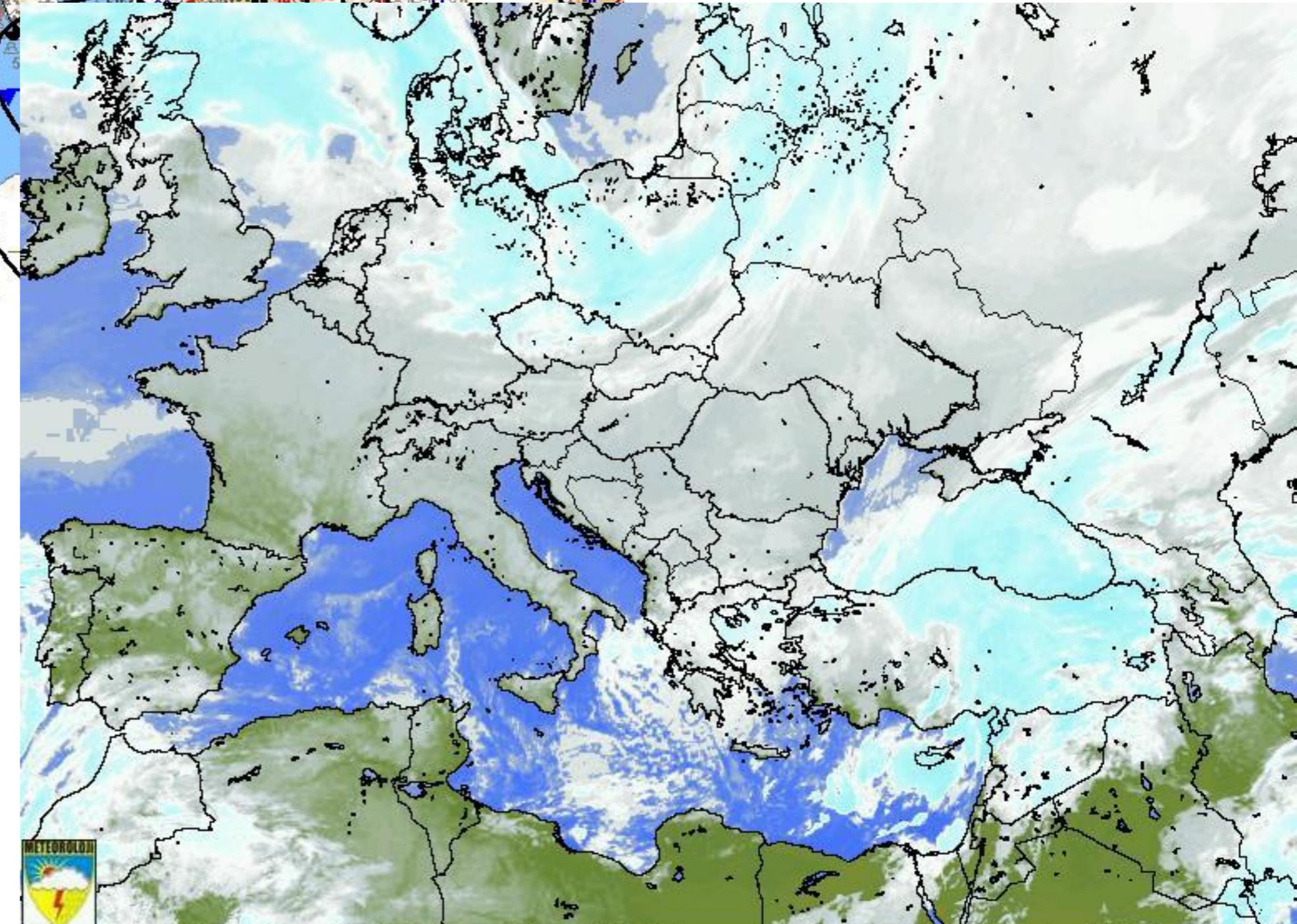
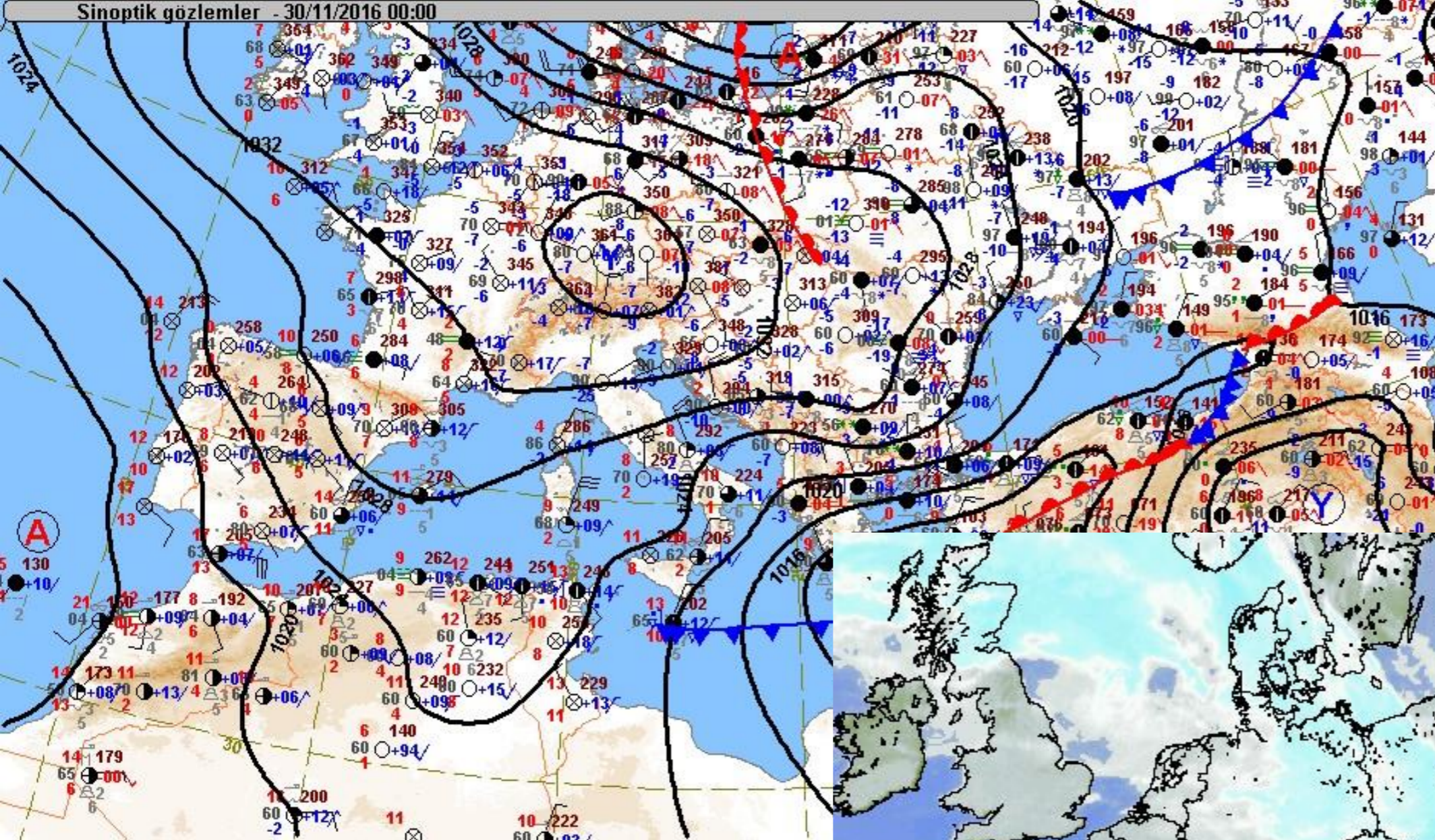
Thu, 01 Dec 2016 11:49:35 GMT

wind pressure clouds waves currents

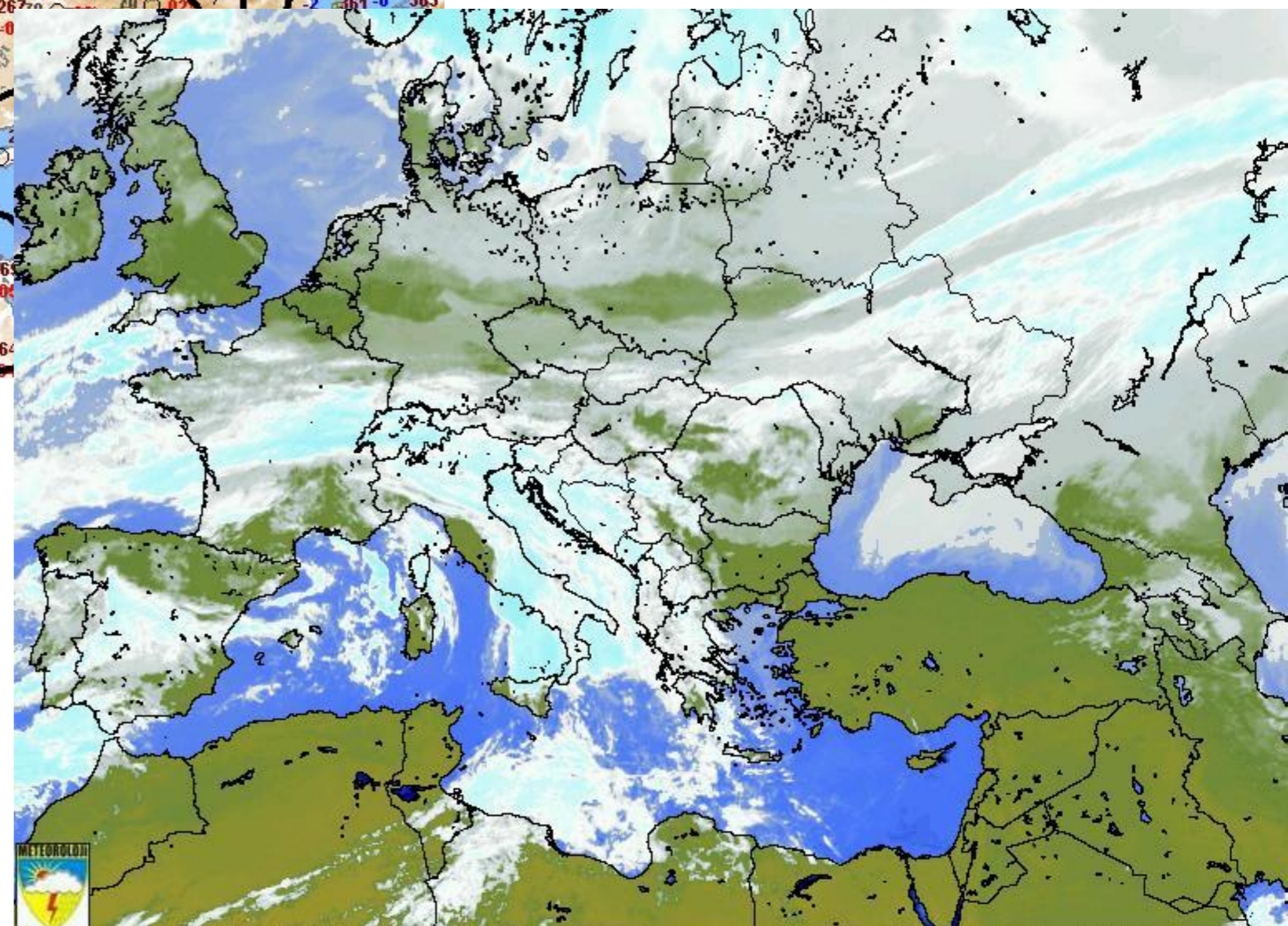
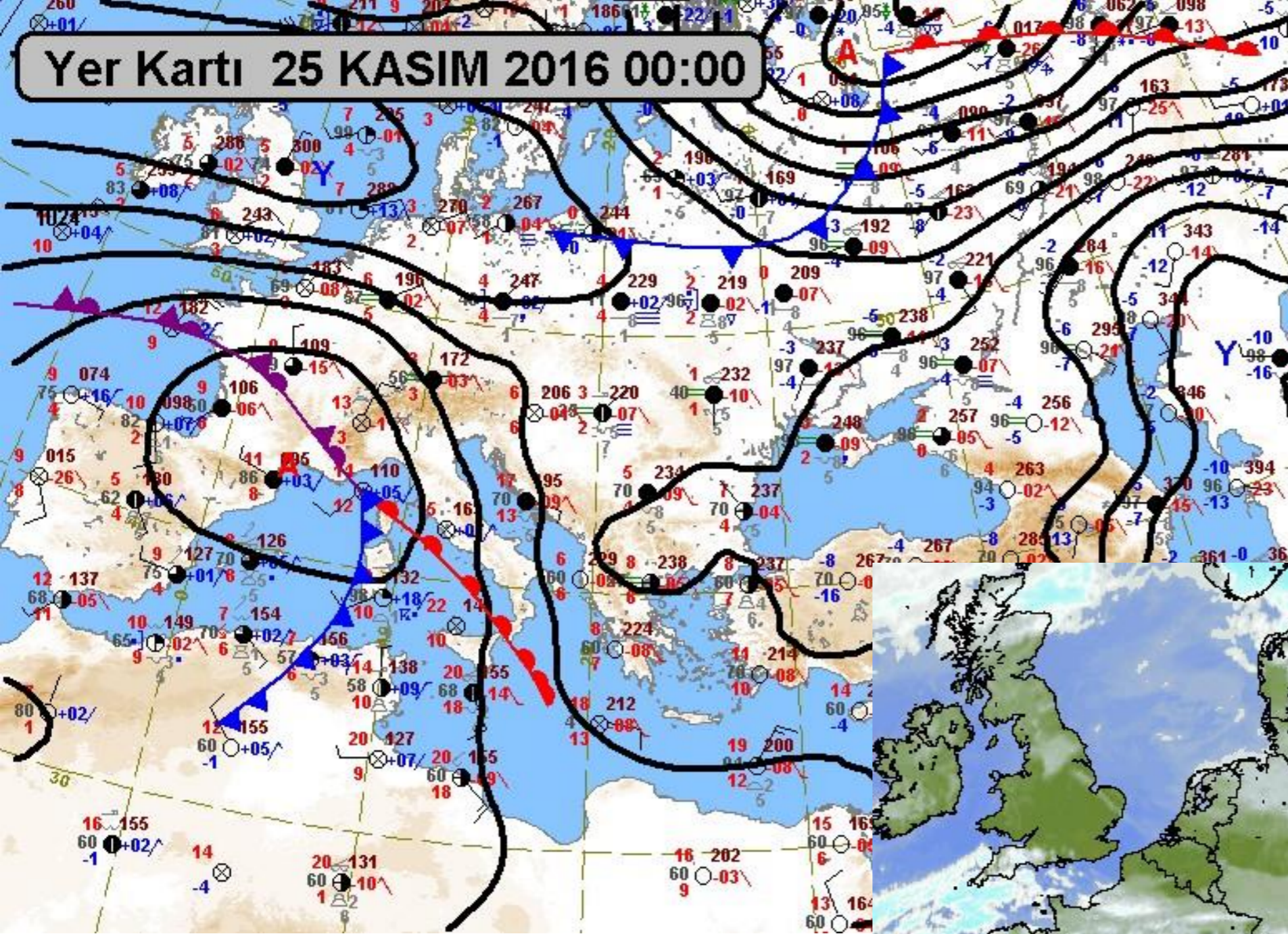
Reports (GMT): 04h, 08h, 11h, 14h, 17h, 21h

Original map: dokelp.com

hPa
995
998
1001
1004
1007
1010
1013
1016
1019
1022
1025
1028



Yer Kartı 25 KASIM 2016 00:00



Azor Yüksek Basıncı

