

# ANIMAL-HUMAN RELATIONS DOMESTICATION AND VETERINARY MEDICINE



**THE FIRST SAMPLES OF  
TOGETHERNESS**



# PALEOLITHIC

(Old Stone Age)

## Paleolithic man;

used simple stone tools.

used caves for shelter.

lived in groups called clans of about 20-30 people.

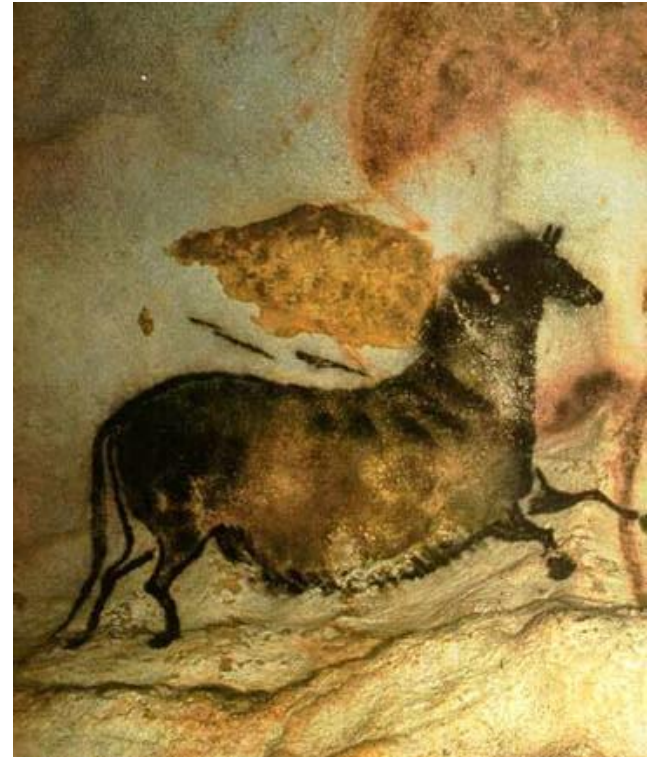
(these clans got their food by Hunting and Gathering.)

(they were nomadic societies)

learned to make and control fire

developed **oral**, or spoken language

made cave art and statues.



# The Mesolithic Age

- ▶ Between the Paleolithic and Neolithic eras there was a transitional stage known as the Mesolithic age where there was a gradual shift from the old food-gathering and hunting economy to a food-producing one.
- ▶ There was also a gradual taming of animals, these changes led to a new period, the Neolithic age.

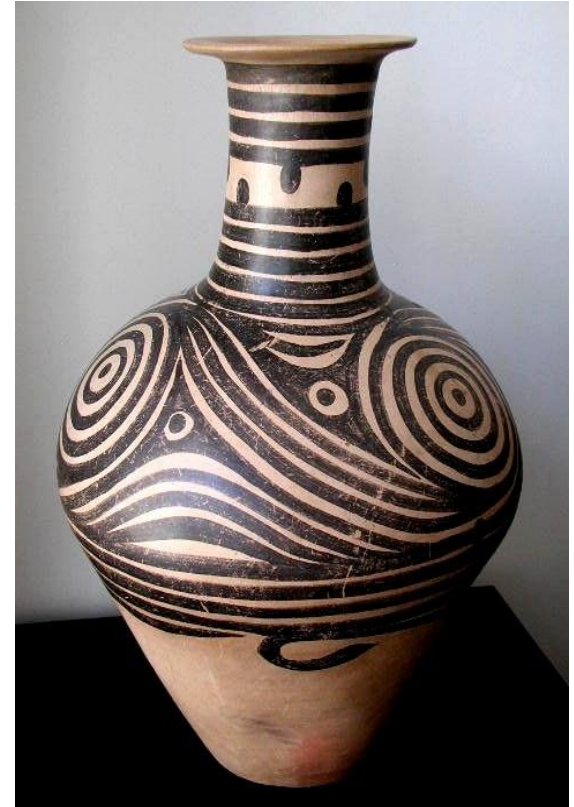
# NEOLITHIC

(New Stone Age)

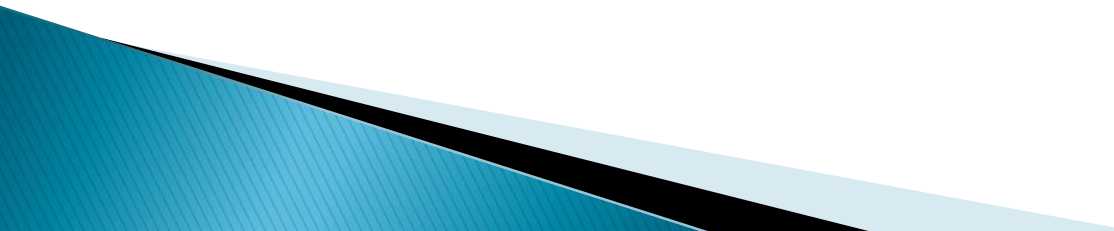
The discovery of agriculture allowed for the change from the Paleolithic period to the Neolithic Period. The first permanent human settlements emerged in this period.

## Neolithic man;

- developed agriculture
- domesticated animals
- used advanced stone tools
- developed weaving (better clothing)
- made pottery (for food storage)



# What does the Neolithic Revolution allow?:

- A sedentary lifestyle
  - The need for cooperation and group effort
  - Job specialization
  - Social Hierarchies (Social classes)
  - Patriarchy (Rule by males)
  - Population Growth
- 

According to the Ethnologists;

**B.C. 12.000** Dog

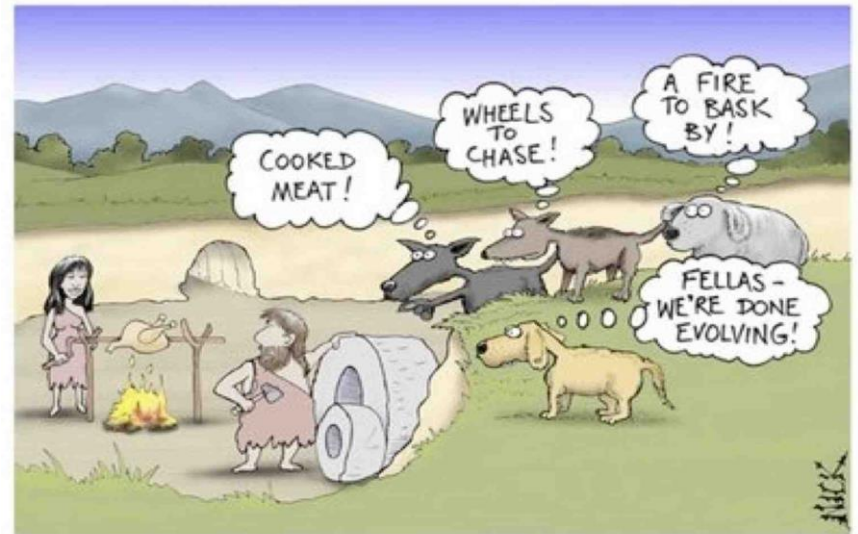
B.C. 7000 Pig and Goat

B.C. 6300-6500 Cattle and Sheep

B.C.. 3500 Cat

B.C. 3000 Horse, Donkey and Camel

were domesticated



Forget the experts; domestication of the dog only took about 8 seconds.



Domesticated animals were used for:  
religious purposes,  
companionship,  
transportation  
draft work,  
food and clothing etc.

Thus animals became the main figures in  
human life!

So a new profession was born: **Animal Healer!**



# Animal Healers in Ancient Civilisations

## Ancient India

Elephant Healer: Palakapya  
Horse Healer: Salihotriya → Salutri (Veterinarian)

## Sumerians

Human Healer: A-su  
Animal Healer: Monai-su

## Ancient Greece

Horse Healer: Hippiatroi

## Byzantine

Animal Healer: Hippiaater

## Rome

Animal Healers: Mulo-medicus  
Medicus Jumentarius  
Equarius Medicus  
Medicus Veterinarius  
Ars Veterinaria (Veterinary Medicine)



# CONCEPT OF DISEASE AND DISEASE PARADIGMS

**Disease: An abnormal situation of discomfort occurred in living body or mind.**

**Theistic Eras**

Evil spirits

God's punishment

**Metaphysic Era**

Ethiological reasons.....Magical,  
.....Gastroethiological  
.....Meteorologic

**Rational Era**

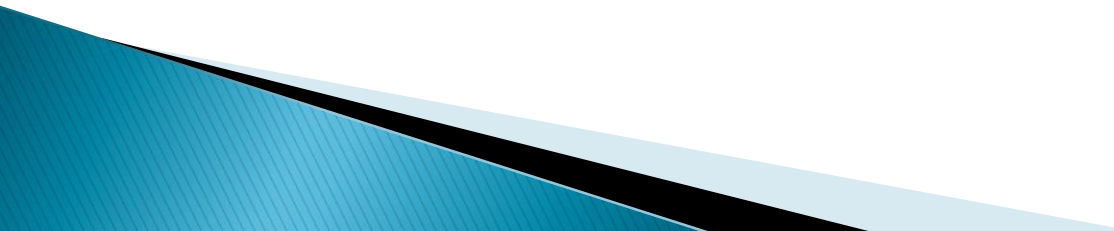
Logical theories

**MARGINAL DISEASE PARADIGMS**

Antique China: Yin&Yang

Antique Greek: God Apollo

# TREATMENT METHODS

1. Instinctive
  2. Religious-magical
  3. Immitation
  4. Trial Method
  5. Rational
- 

## websites of figures

- <http://www.bradshawfoundation.com/clottes/chronology.php>
- <https://tr.pinterest.com/pin/227924431112592289/?lp=true>
- <https://tr.pinterest.com/pin/327777679113982847/>
- <http://www.lithiccastinglab.com/gallery-pages/2002marchaurignacianpage2.htm>
- <https://www.pinterest.co.uk/pin/505880970612793282/?lp=true>
- <https://tr.pinterest.com/patterngeek/neolithic-clothing/?lp=true>
- <http://www.rolloverlaughing.com/viewphoto.php?ItemID=773&ItemCategory=8&ItemSubCategory=>
- <http://www.scienceagogo.com/news/20140430062507.shtml>