

Ankara University, Faculty of Agriculture , Department of Fisheries and  
Aquaculture, Programme of Fisheries and Aquaculture

# AQS421: Aquatic Invertebrates

Reference: Brusca, R. C., & Brusca, G. J. **Invertebrates**. 2003.  
Sunderland, MA: Sinauer Associates, 2.

<b>AQS421: Aquatic Invertebrates</b>	
<b>Week 1:</b> <ul style="list-style-type: none"> <li>• Introduction</li> </ul>	<b>Week 8:</b> <ul style="list-style-type: none"> <li>• Phylum Nemertea: The Ribbon Worms</li> <li>• Blastocoelomates and Other Phyla</li> </ul>
<b>Week 2:</b> <ul style="list-style-type: none"> <li>• Classification, Systematics and Phylogeny</li> </ul>	<b>Week 9:</b> <ul style="list-style-type: none"> <li>• Phylum Annelida: The Segmented Worms</li> <li>• Sipuncula and Echiura</li> </ul>
<b>Week 3:</b> <ul style="list-style-type: none"> <li>• Animal Architecture and the Bauplan Concept</li> </ul>	<b>Week 10:</b> <ul style="list-style-type: none"> <li>• The Emergence of the Arthropods: Onychophorans, Tardigrades, Trilobites, and the Arthropod Bauplan</li> </ul>
<b>Week 4:</b> <ul style="list-style-type: none"> <li>• Animal Development, Life Histories, and Origins</li> </ul>	<b>Week 11:</b> <ul style="list-style-type: none"> <li>• Phylum Arthropoda: The Crustacea</li> </ul>
<b>Week 5:</b> <ul style="list-style-type: none"> <li>• The Protists</li> </ul>	<b>Week 12:</b> <ul style="list-style-type: none"> <li>• Phylum Mollusca</li> </ul>
<b>Week 6:</b> <ul style="list-style-type: none"> <li>• Phylum Porifera: The Sponges</li> <li>• Phylum Cnidaria</li> </ul>	<b>Week 13:</b> <ul style="list-style-type: none"> <li>• Lophophorates</li> <li>• Phylum Echinodermata</li> </ul>
<b>Week 7:</b> <ul style="list-style-type: none"> <li>• Phylum Ctenophora: The Comb Jellies</li> <li>• Phylum: Platyhelminthes</li> </ul>	<b>Week 14:</b> <ul style="list-style-type: none"> <li>• Other Deuterostomes</li> <li>• Perspectives on Invertebrate Phylogeny</li> </ul>

Ankara University, Faculty of Agriculture , Department of Fisheries and Aquaculture, Programme of Fisheries and Aquaculture

## AQS421: Aquatic Invertebrates

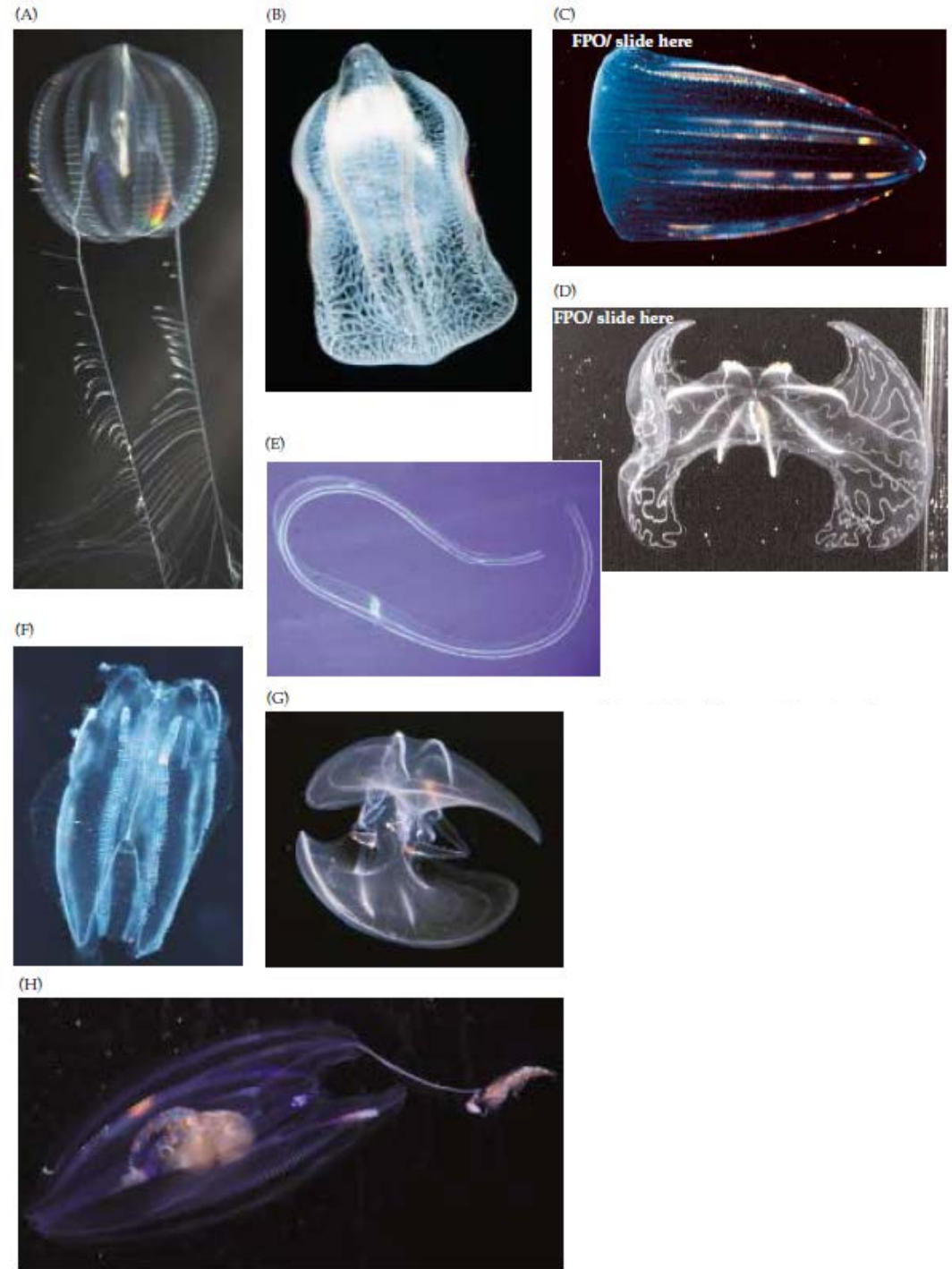
### 7. Week:

Phylum Ctenophora: The Comb Jellies

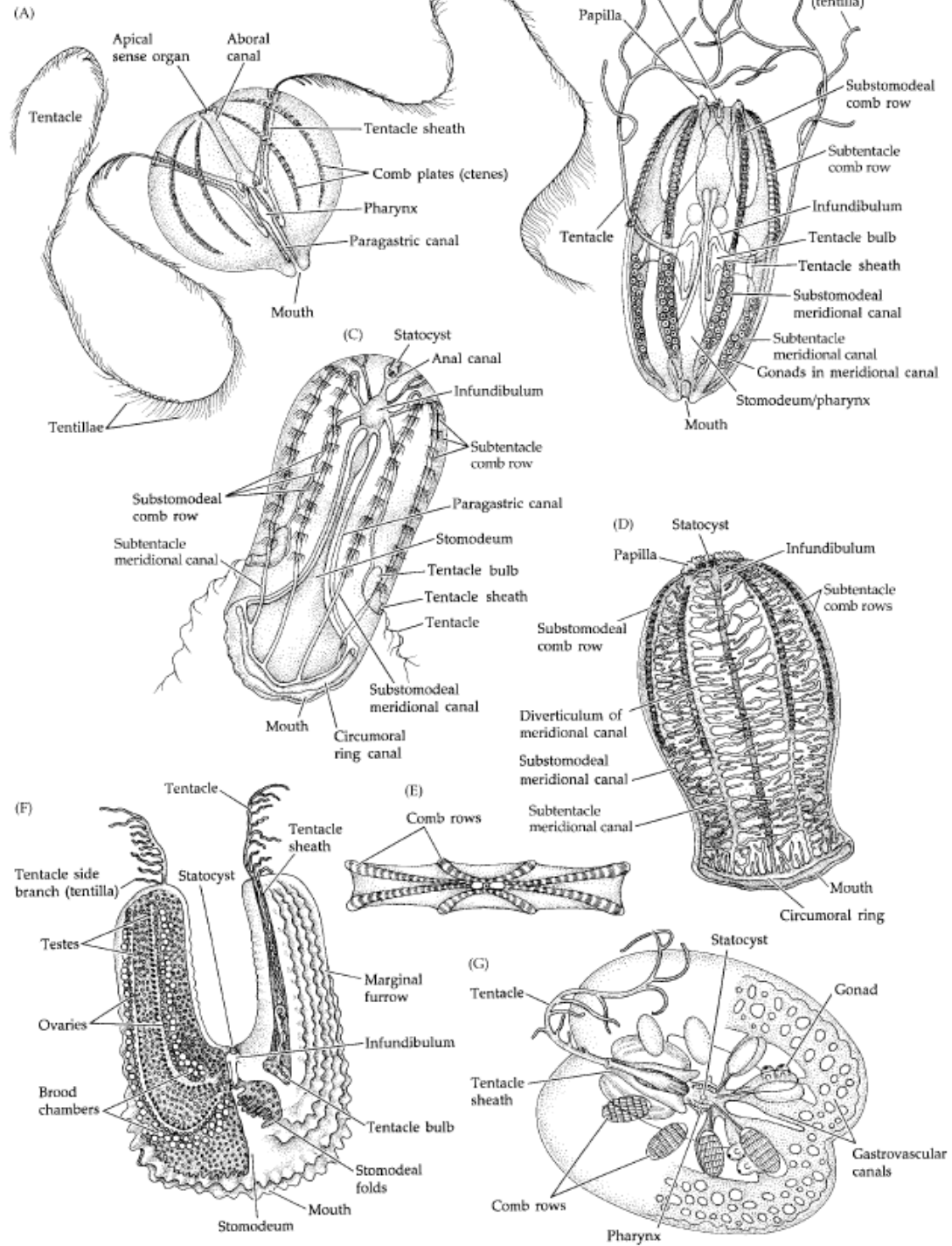
Phylum: Platyhelminthes

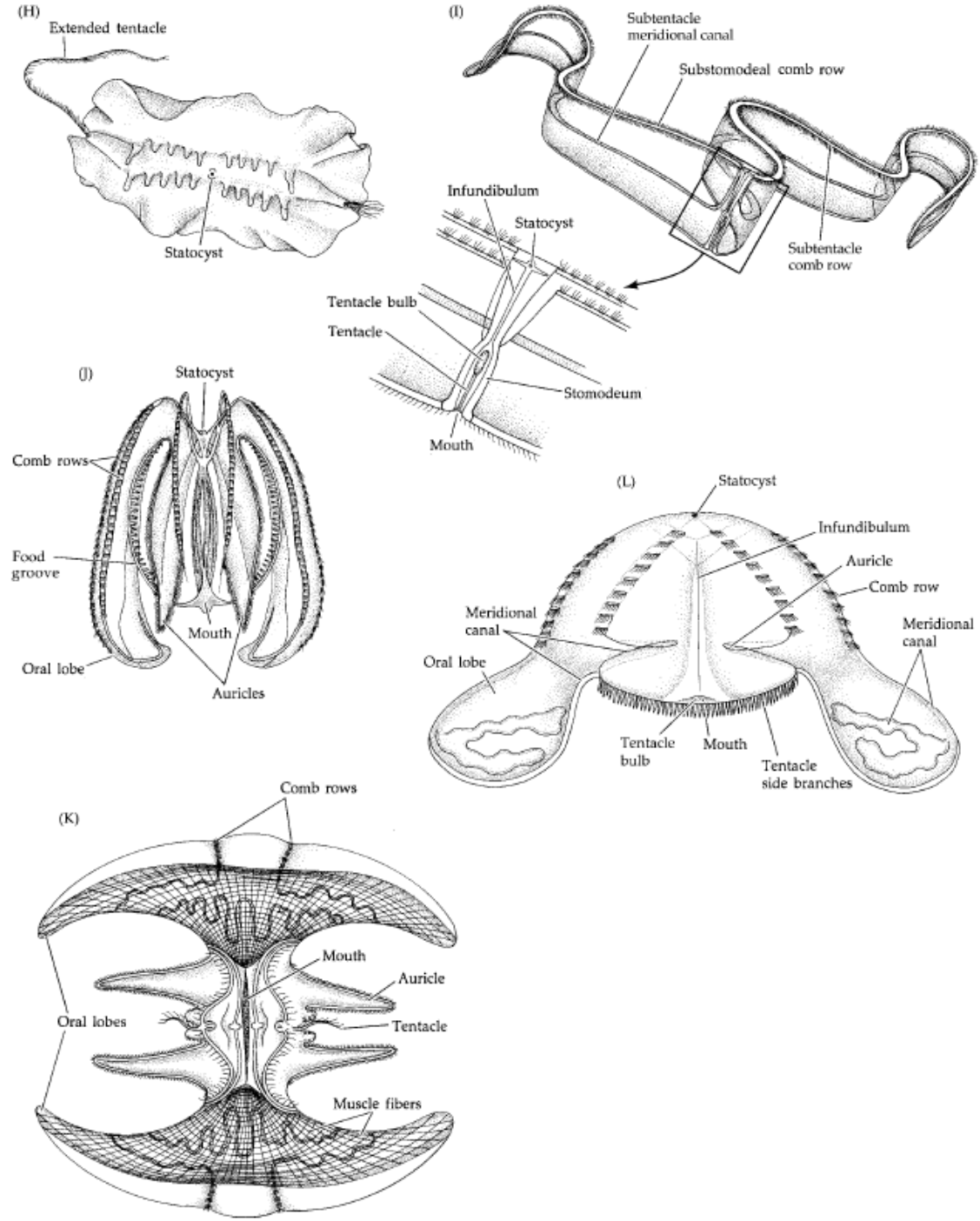
Reference: Brusca, R. C., & Brusca, G. J. **Invertebrates**. 2003. Sunderland, MA: Sinauer Associates, 2.

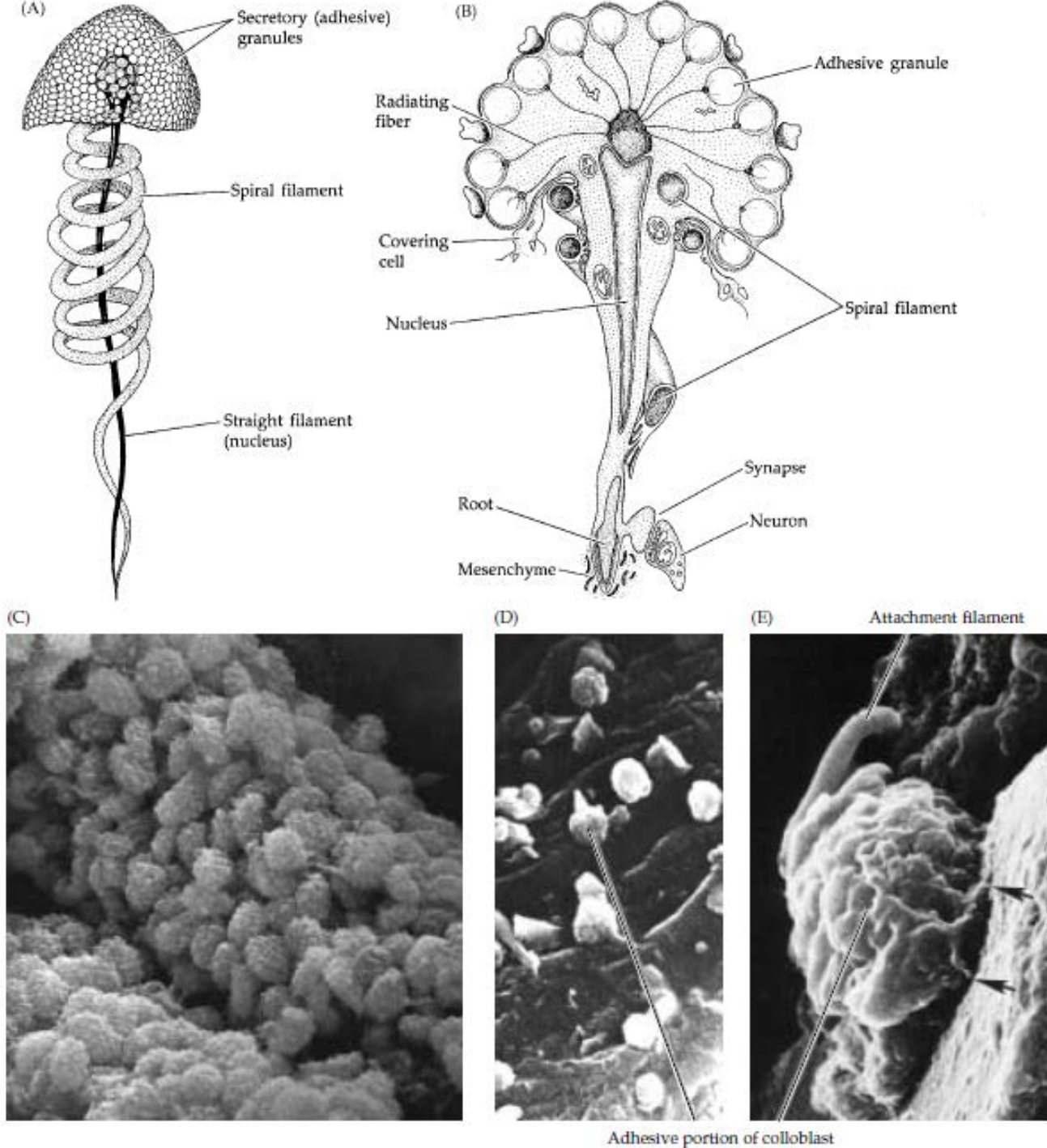
Figures & Tables are taken from: Reference: Brusca, R. C., & Brusca, G. J. **Invertebrates**. 2003. Sunderland, MA: Sinauer Associates, 2.

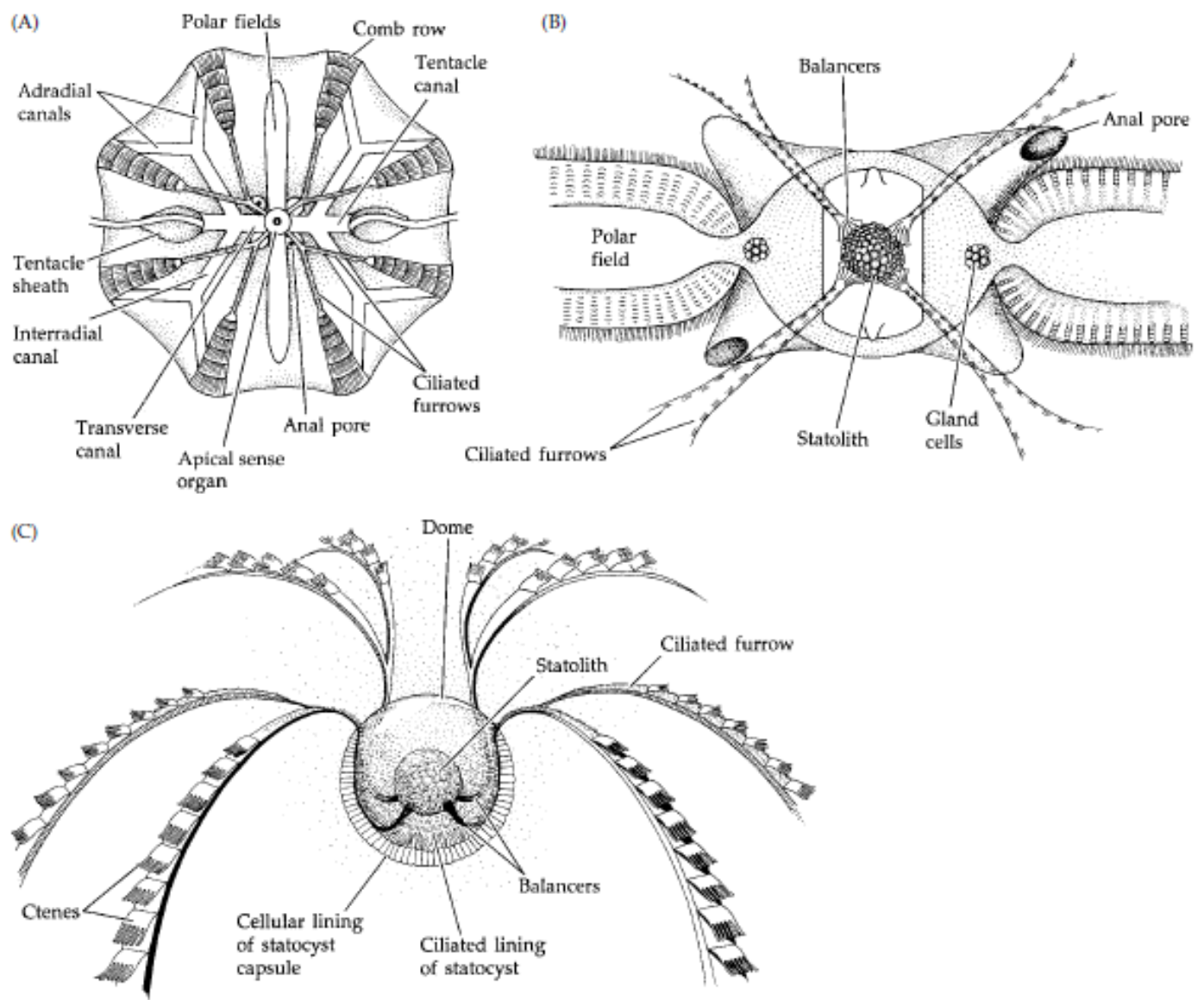


Figures & Tables are taken from: Reference: Brusca, R. C., & Brusca, G. J. **Invertebrates**. 2003. Sunderland, MA: Sinauer Associates, 2.

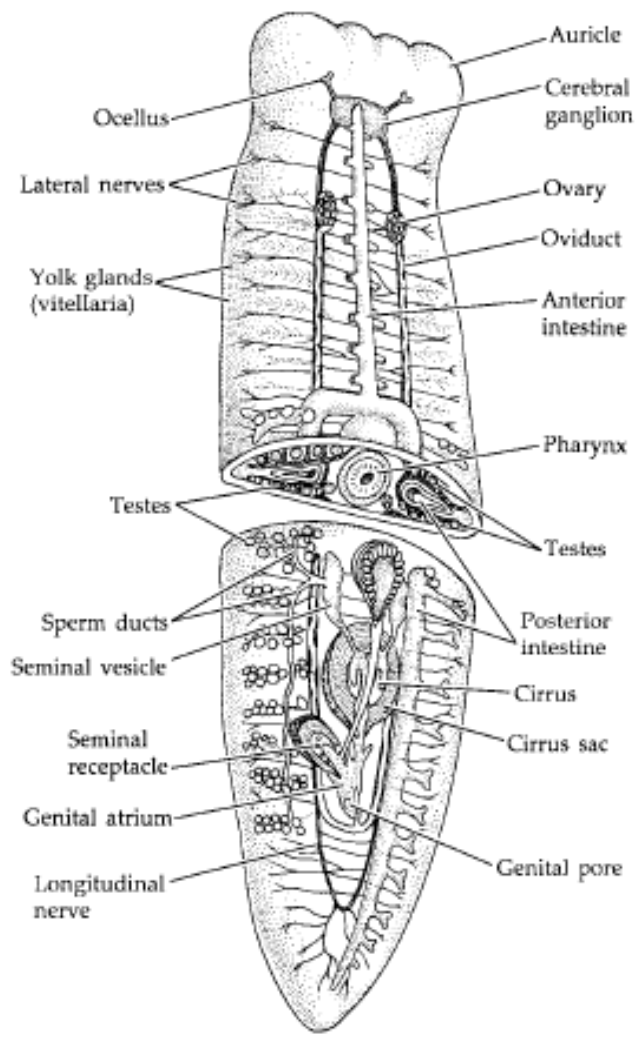


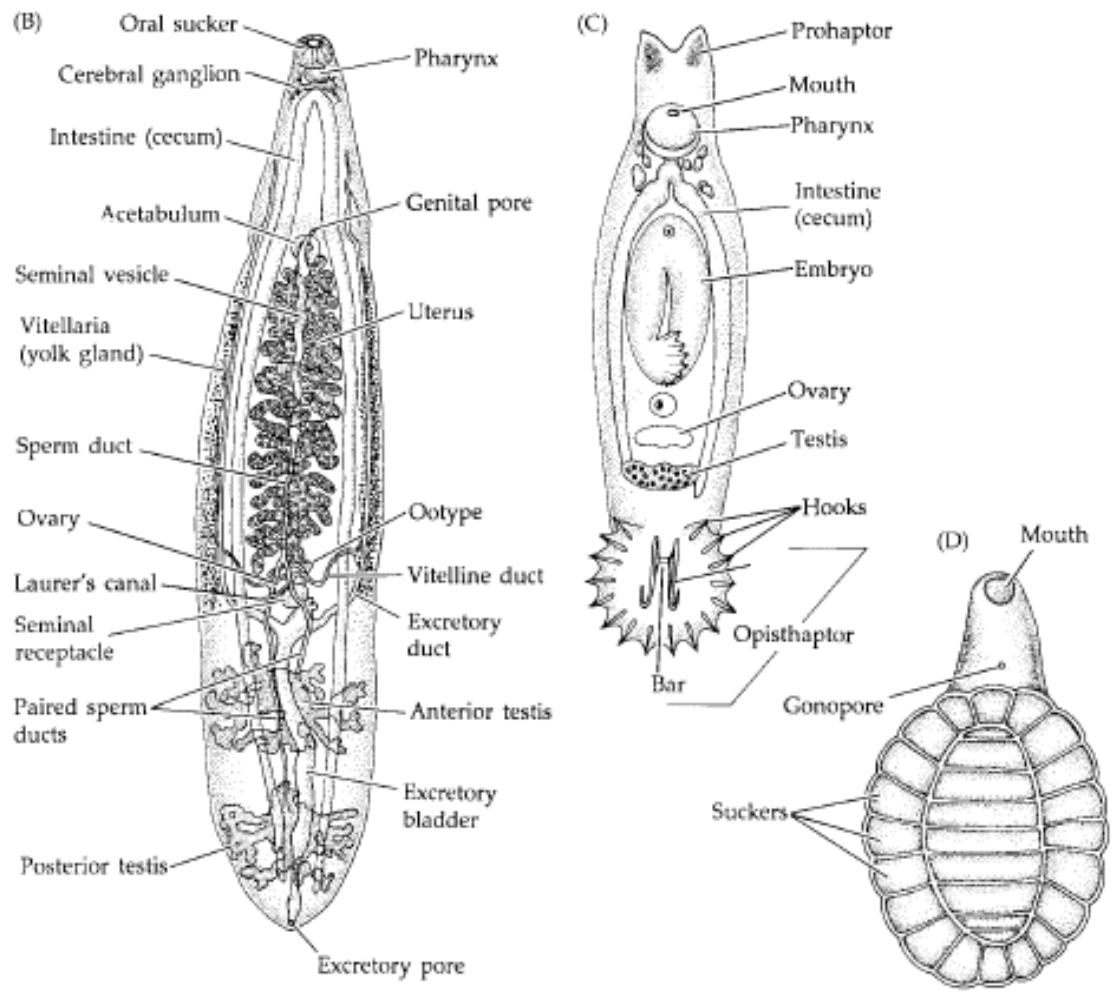












Figures & Tables are taken from: Reference: Brusca, R. C., & Brusca, G. J. **Invertebrates**. 2003. Sunderland, MA: Sinauer Associates, 2.

