

Ankara University, Faculty of Agriculture , Department of Fisheries and
Aquaculture, Programme of Fisheries and Aquaculture

AQS421: Aquatic Invertebrates

Reference: Brusca, R. C., & Brusca, G. J. **Invertebrates**. 2003.
Sunderland, MA: Sinauer Associates, 2.

AQS421: Aquatic Invertebrates	
Week 1: <ul style="list-style-type: none"> • Introduction 	Week 8: <ul style="list-style-type: none"> • Phylum Nemertea: The Ribbon Worms • Blastocoelomates and Other Phyla
Week 2: <ul style="list-style-type: none"> • Classification, Systematics and Phylogeny 	Week 9: <ul style="list-style-type: none"> • Phylum Annelida: The Segmented Worms • Sipuncula and Echiura
Week 3: <ul style="list-style-type: none"> • Animal Architecture and the Bauplan Concept 	Week 10: <ul style="list-style-type: none"> • The Emergence of the Arthropods: Onychophorans, Tardigrades, Trilobites, and the Arthropod Bauplan
Week 4: <ul style="list-style-type: none"> • Animal Development, Life Histories, and Origins 	Week 11: <ul style="list-style-type: none"> • Phylum Arthropoda: The Crustacea
Week 5: <ul style="list-style-type: none"> • The Protists 	Week 12: <ul style="list-style-type: none"> • Phylum Mollusca
Week 6: <ul style="list-style-type: none"> • Phylum Porifera: The Sponges • Phylum Cnidaria 	Week 13: <ul style="list-style-type: none"> • Lophophorates • Phylum Echinodermata
Week 7: <ul style="list-style-type: none"> • Phylum Ctenophora: The Comb Jellies • Phylum: Platyhelminthes 	Week 14: <ul style="list-style-type: none"> • Other Deuterostomes • Perspectives on Invertebrate Phylogeny

Ankara University, Faculty of Agriculture , Department of Fisheries and Aquaculture, Programme of Fisheries and Aquaculture

AQS421: Aquatic Invertebrates

12. Week:

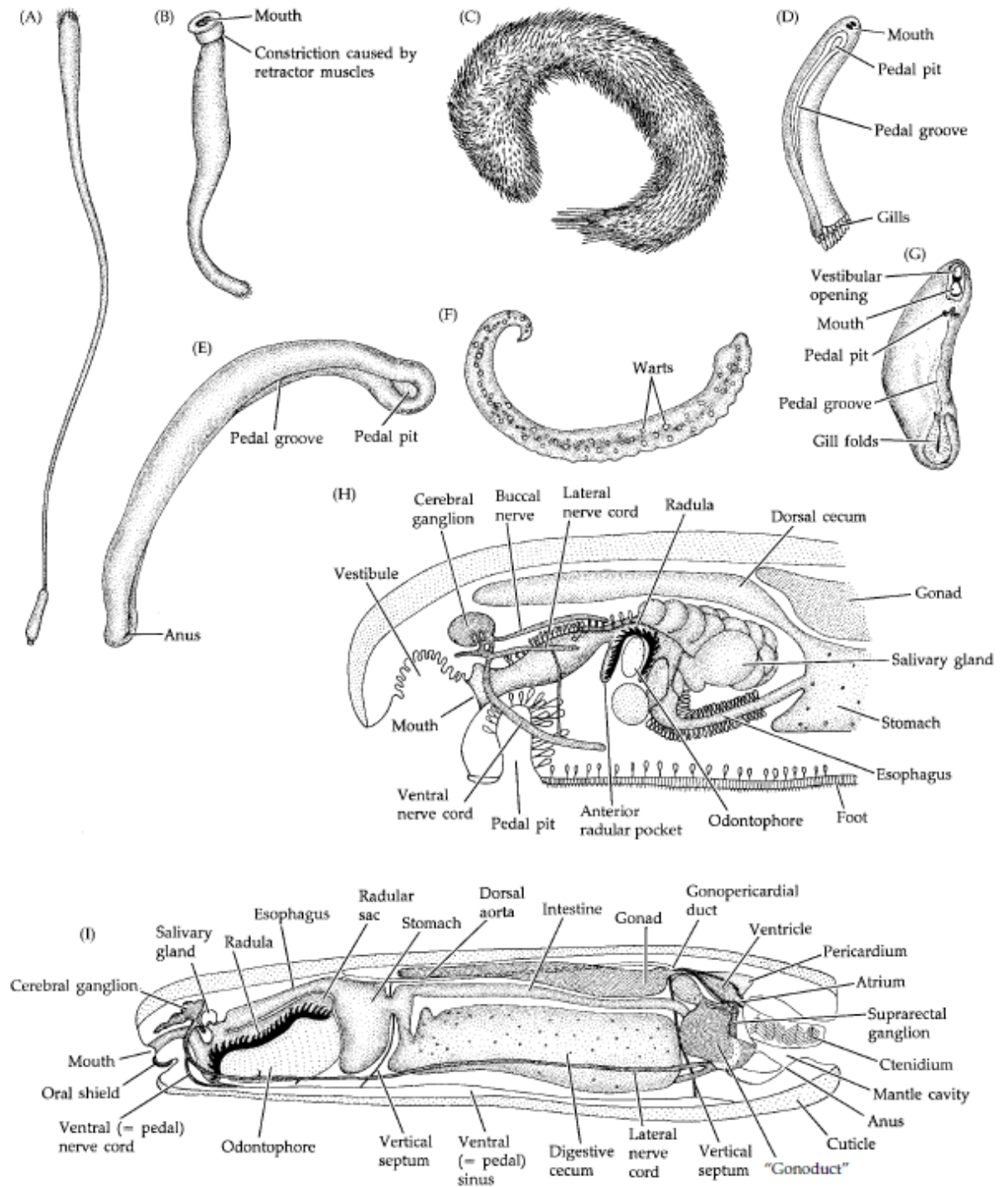
Phylum Mollusca

Reference: Brusca, R. C., & Brusca, G. J. **Invertebrates**. 2003. Sunderland, MA: Sinauer Associates, 2.

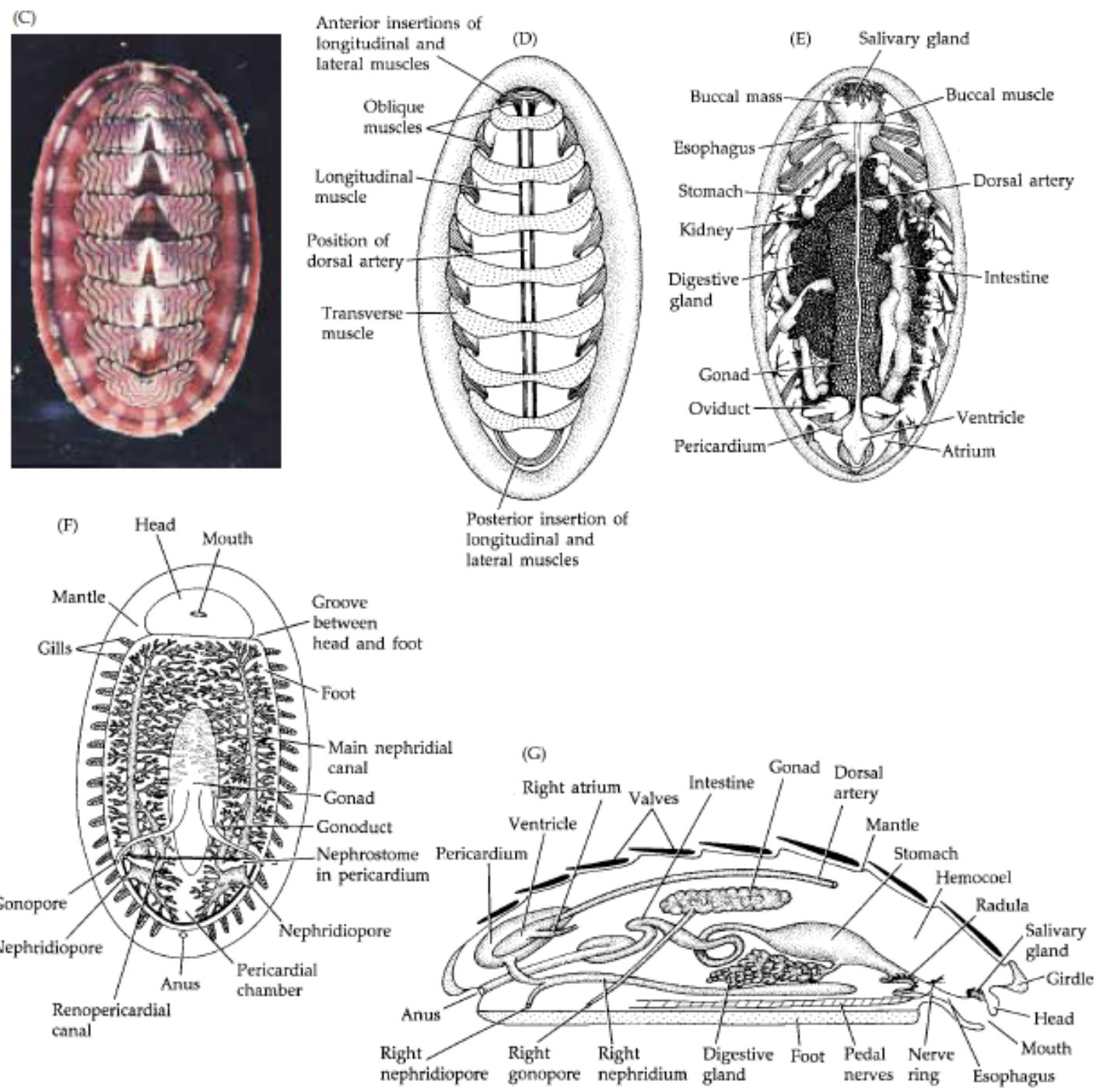
Figures & Tables are taken from: Reference: Brusca, R. C., & Brusca, G. J. **Invertebrates**. 2003. Sunderland, MA: Sinauer Associates, 2.

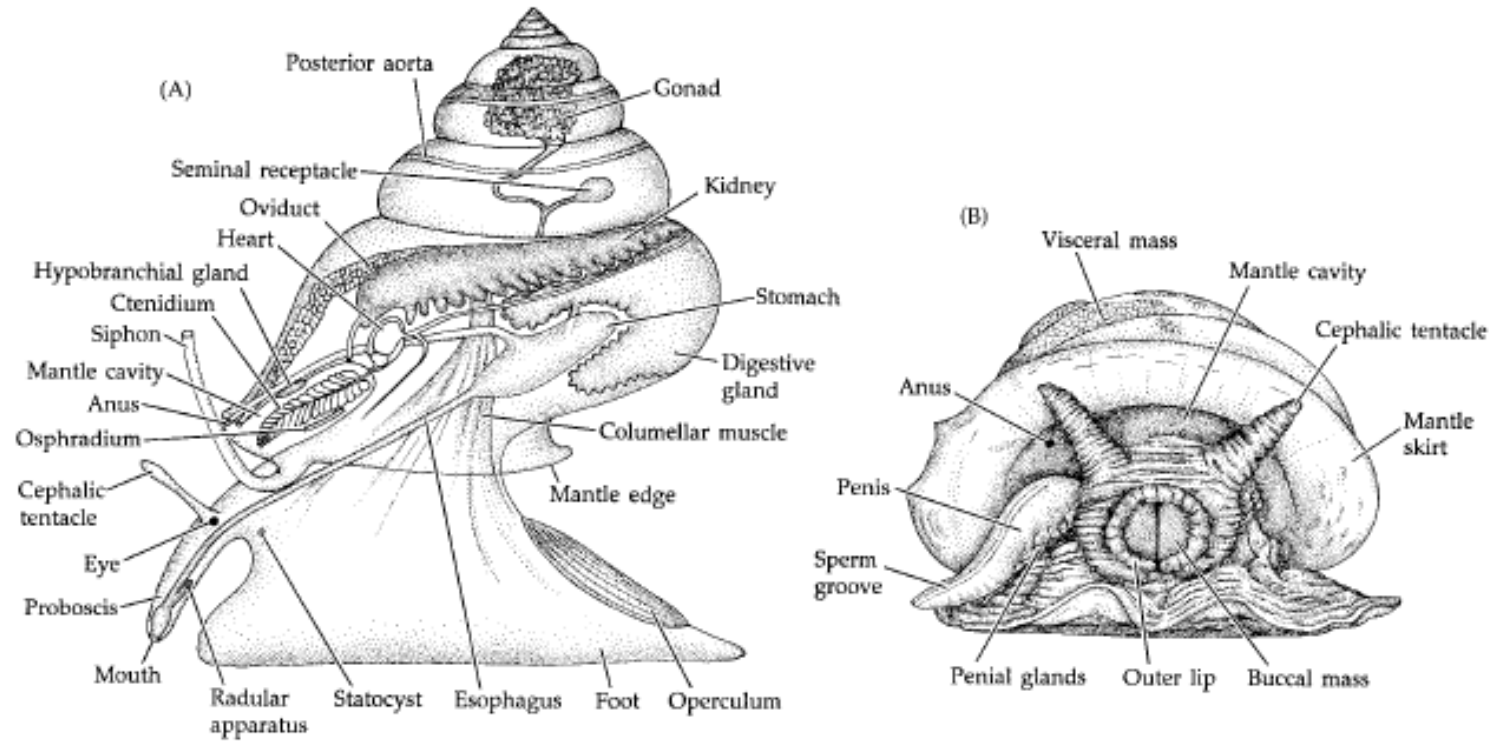


Figures & Tables are taken from: Reference: Brusca, R. C., & Brusca, G. J. **Invertebrates**. 2003. Sunderland, MA: Sinauer Associates, 2.

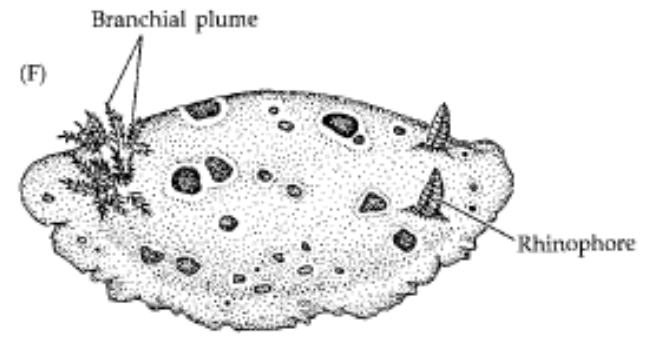
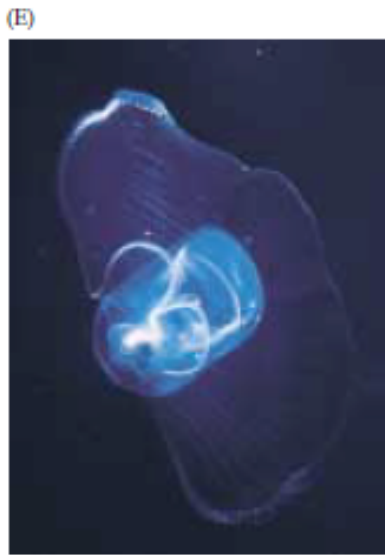
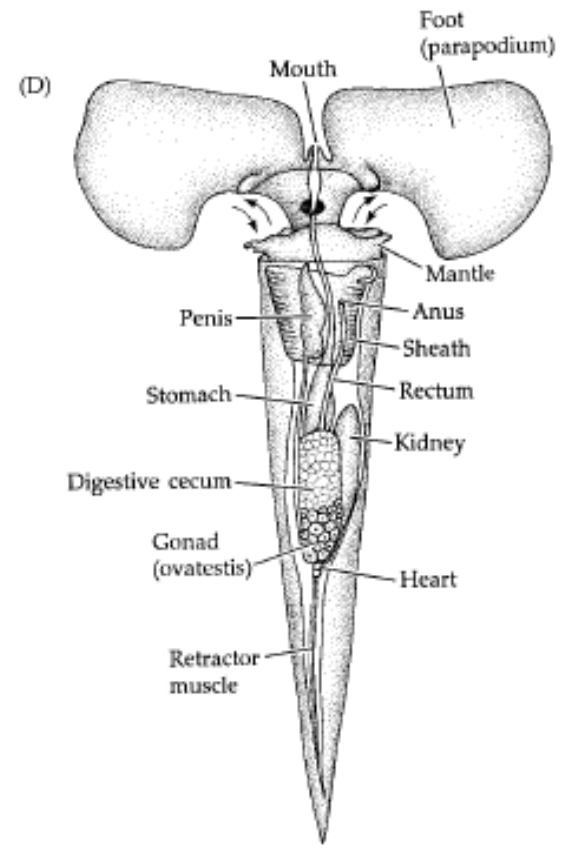
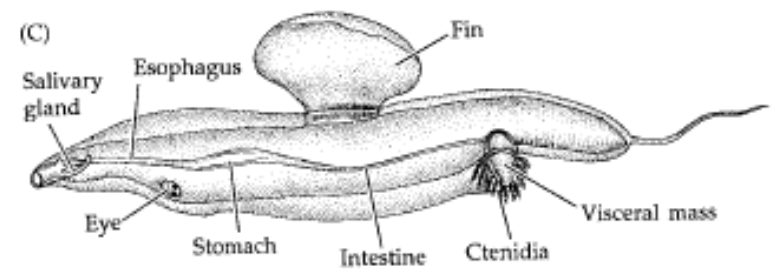
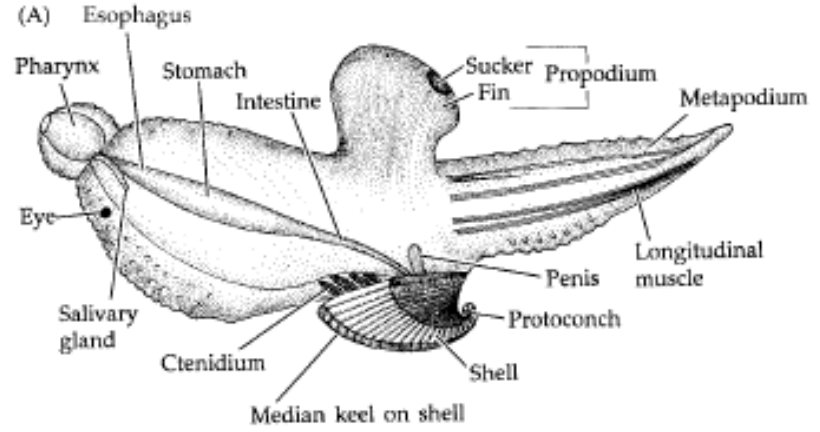


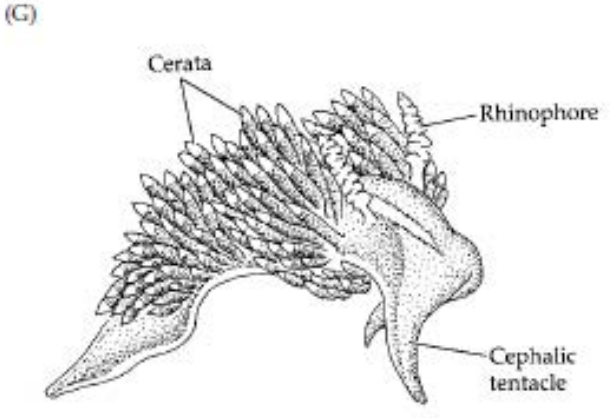
Figures & Tables are taken from: Reference: Brusca, R. C., & Brusca, G. J. *Invertebrates*. 2003. Sunderland, MA: Sinauer Associates, 2.



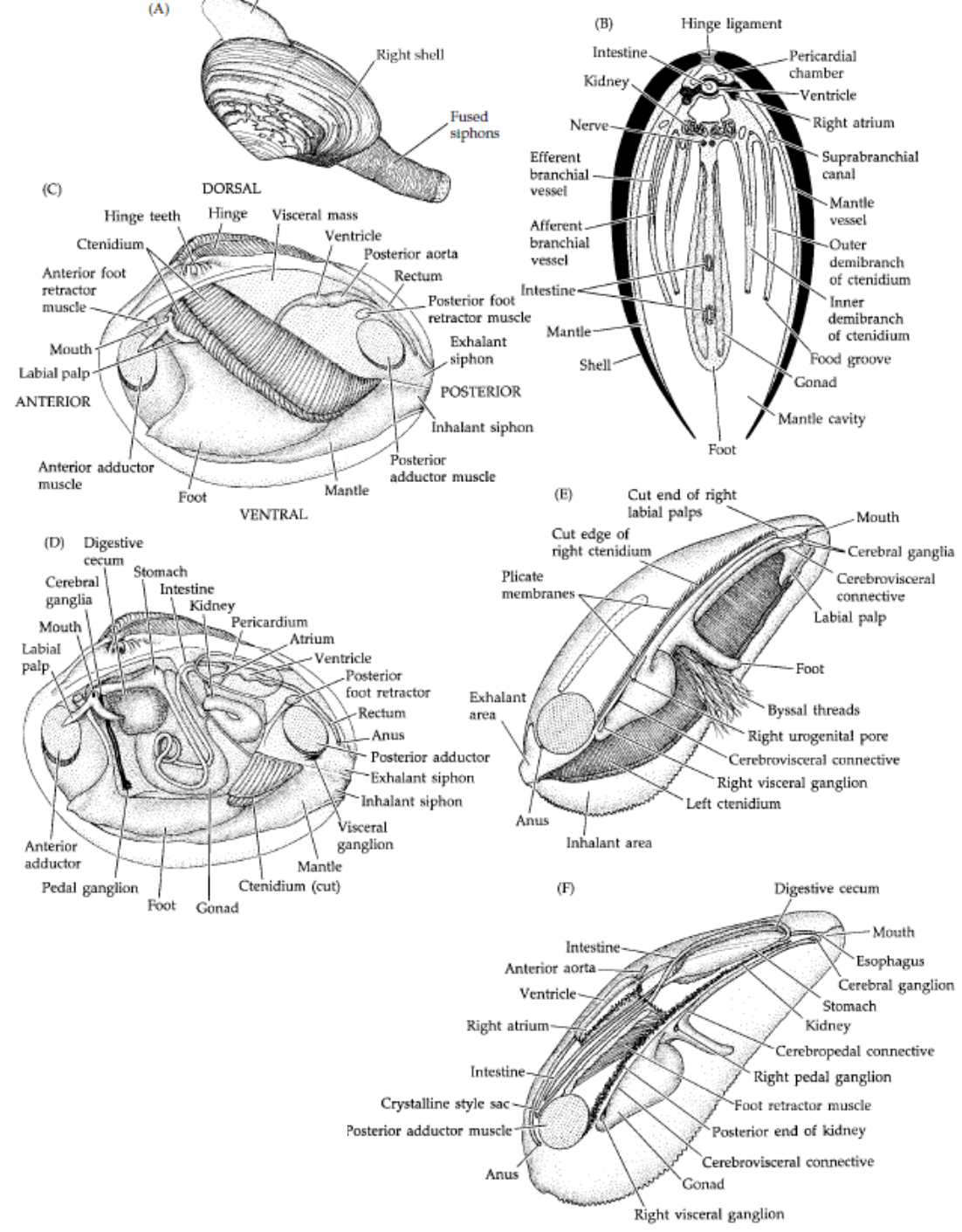


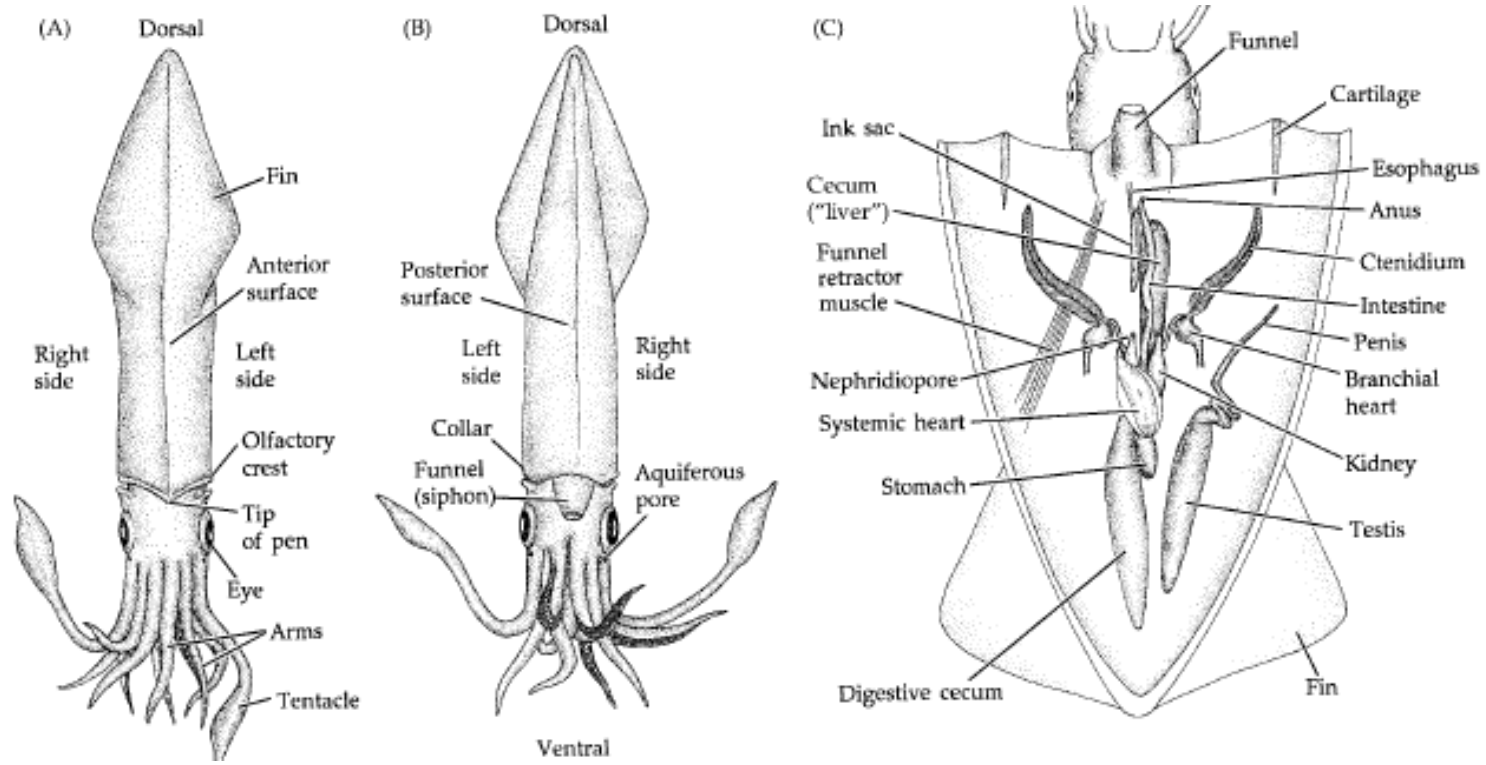
Figures & Tables are taken from: Reference: Brusca, R. C., & Brusca, G. J. *Invertebrates*. 2003. Sunderland, MA: Sinauer Associates, 2.

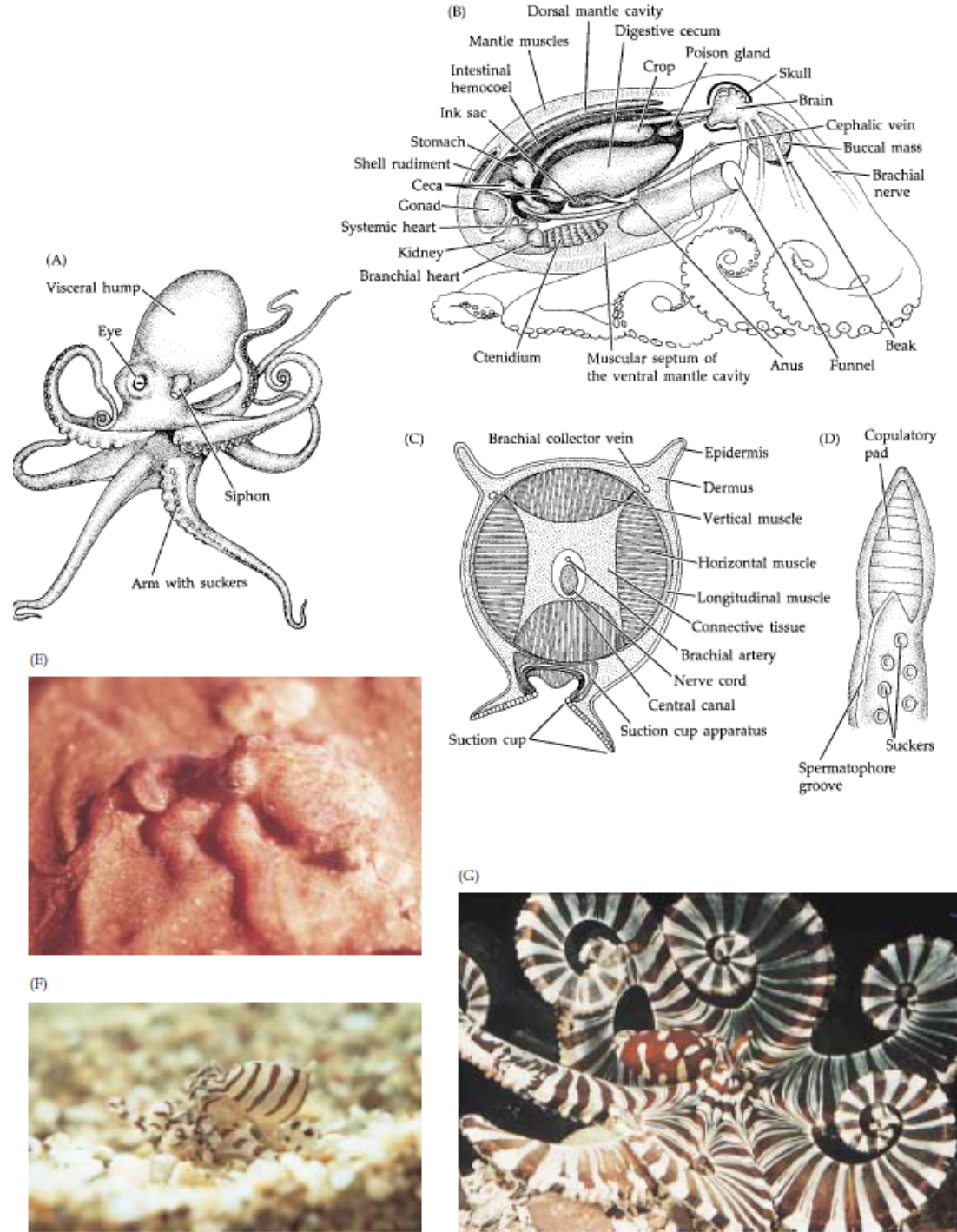


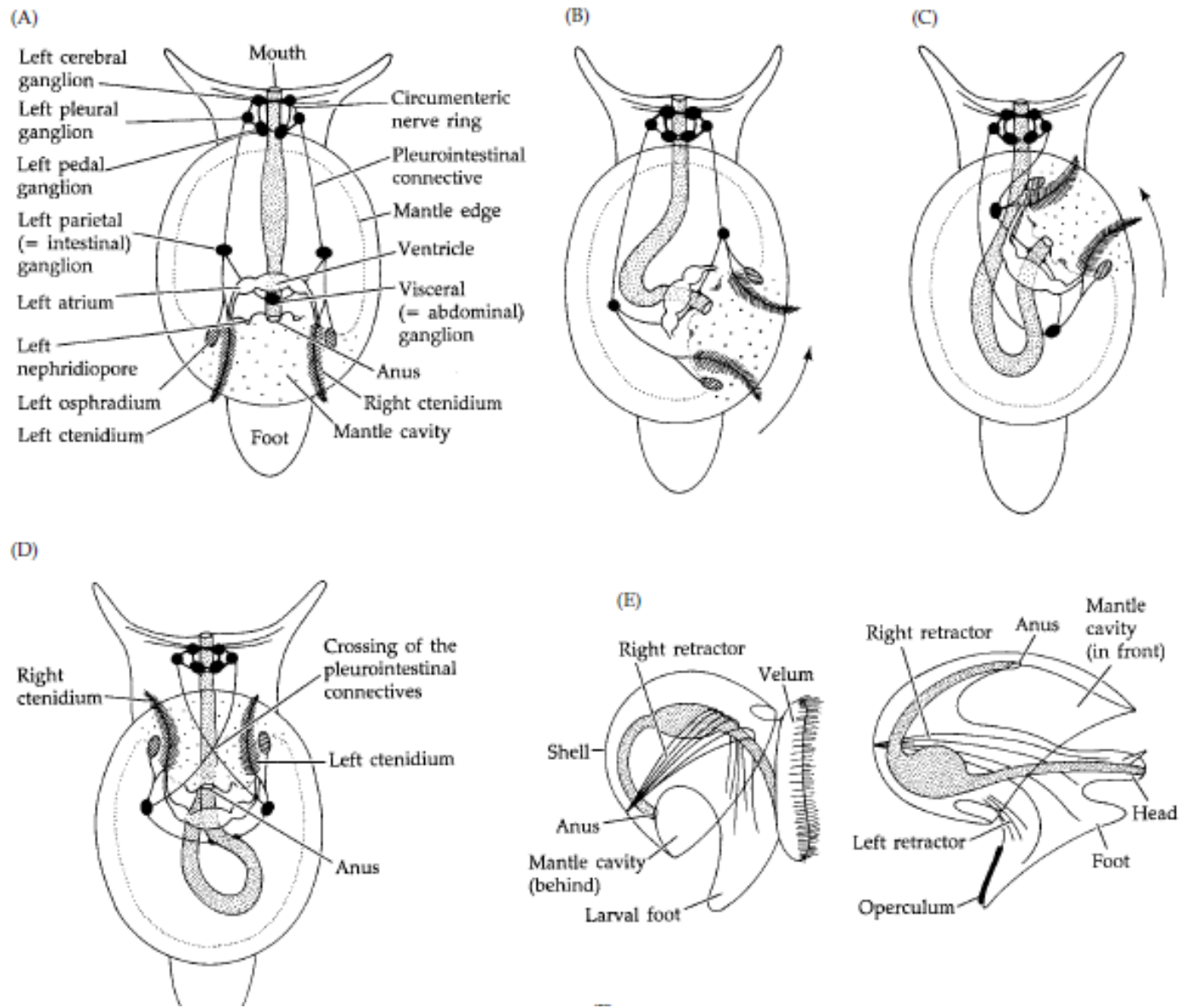


Figures & Tables are taken from: Reference: Brusca, R. C., & Brusca, G. J. **Invertebrates**. 2003. Sunderland, MA: Sinauer Associates, 2.

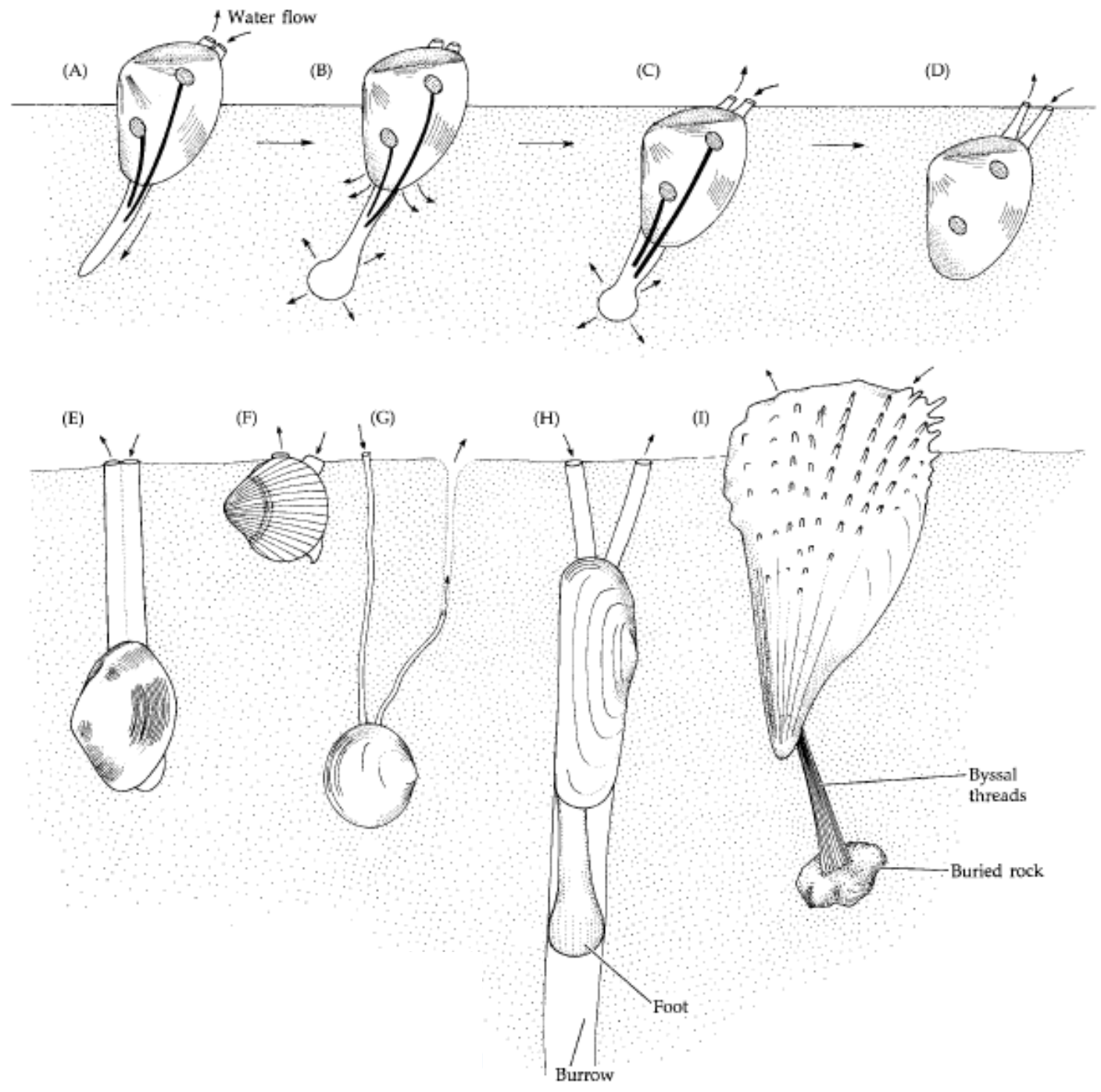


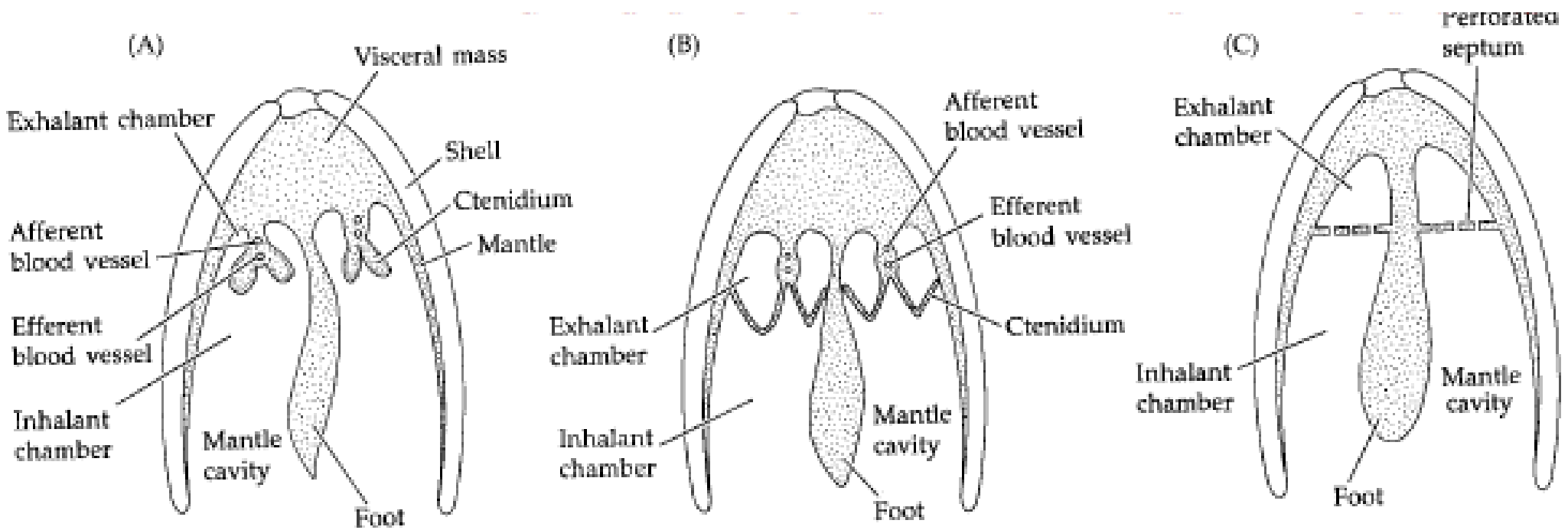


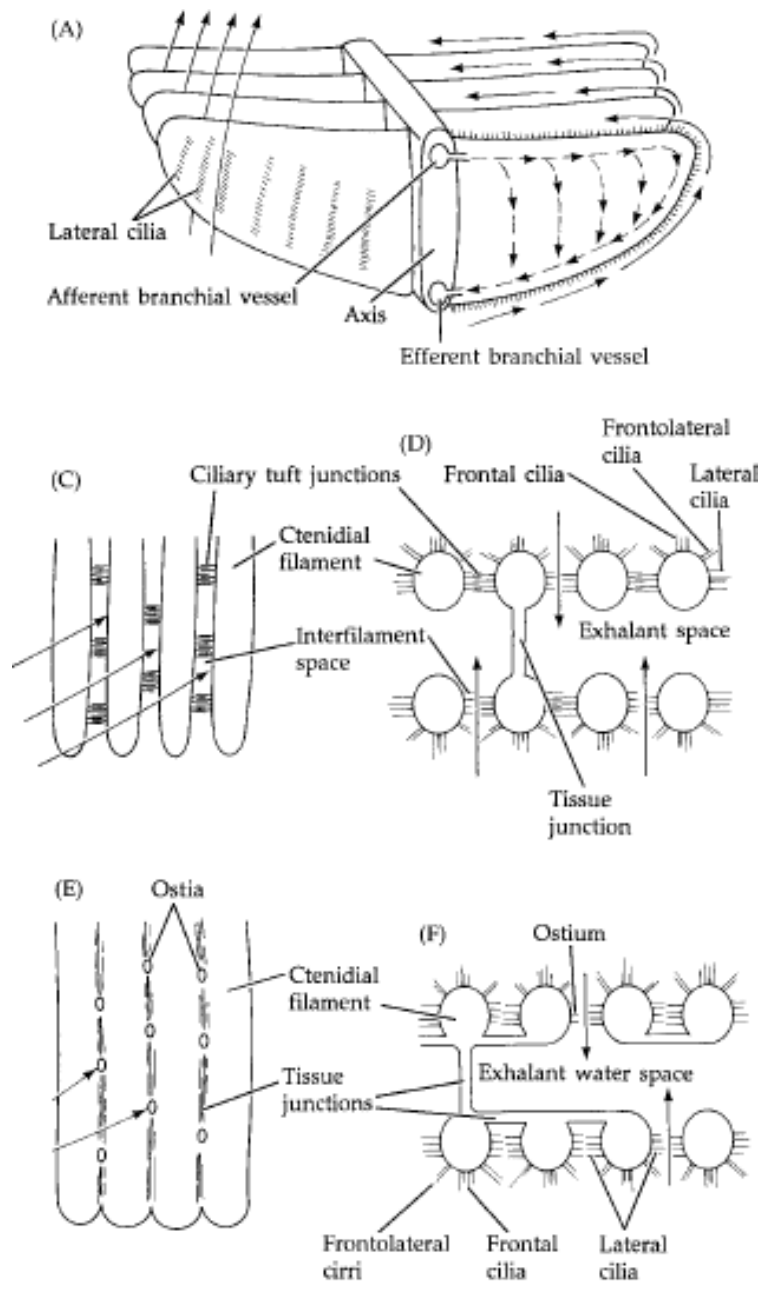




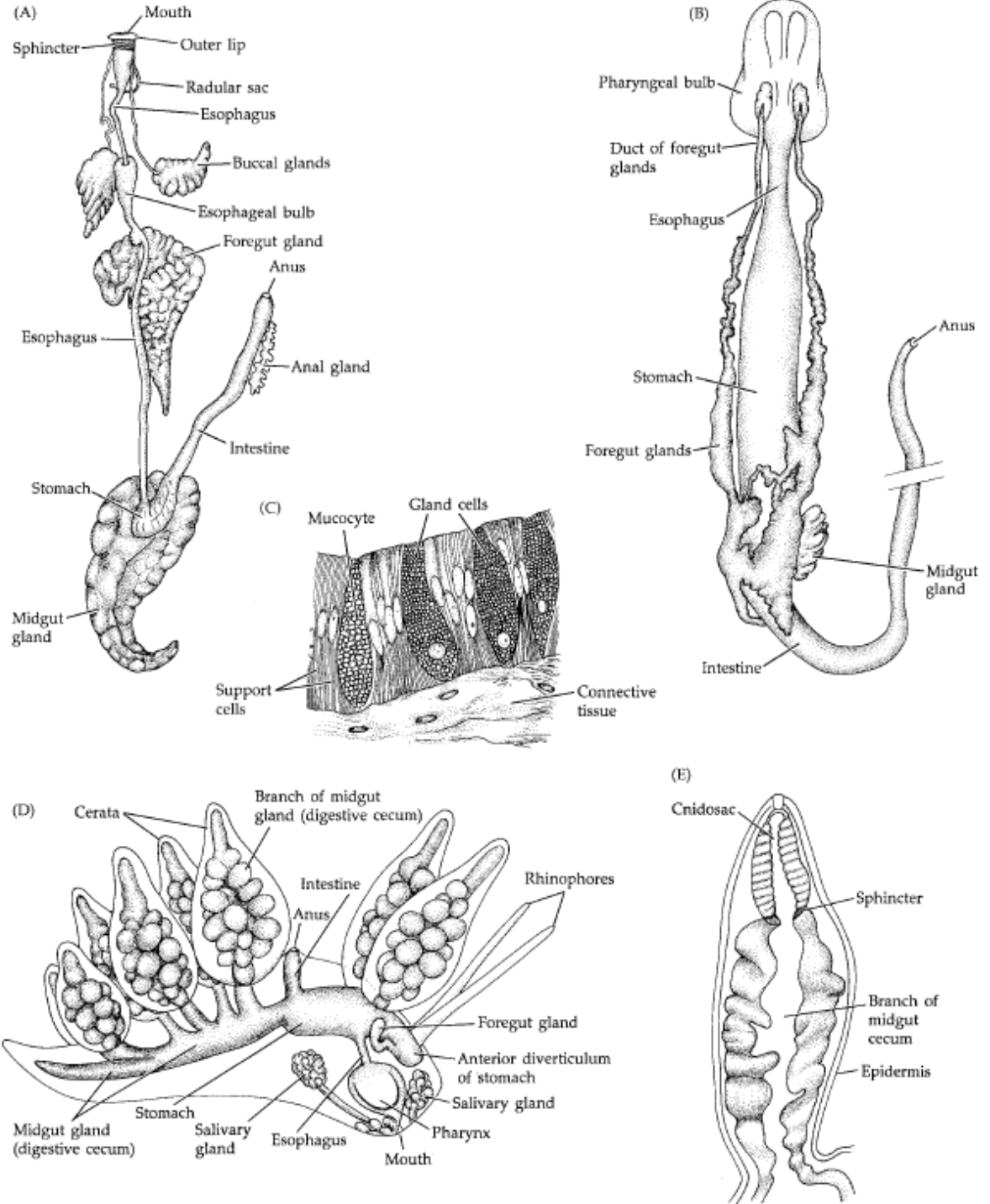
Figures & Tables are taken from: Reference: Brusca, R. C., & Brusca, G. J. **Invertebrates**. 2003. Sunderland, MA: Sinauer Associates, 2.

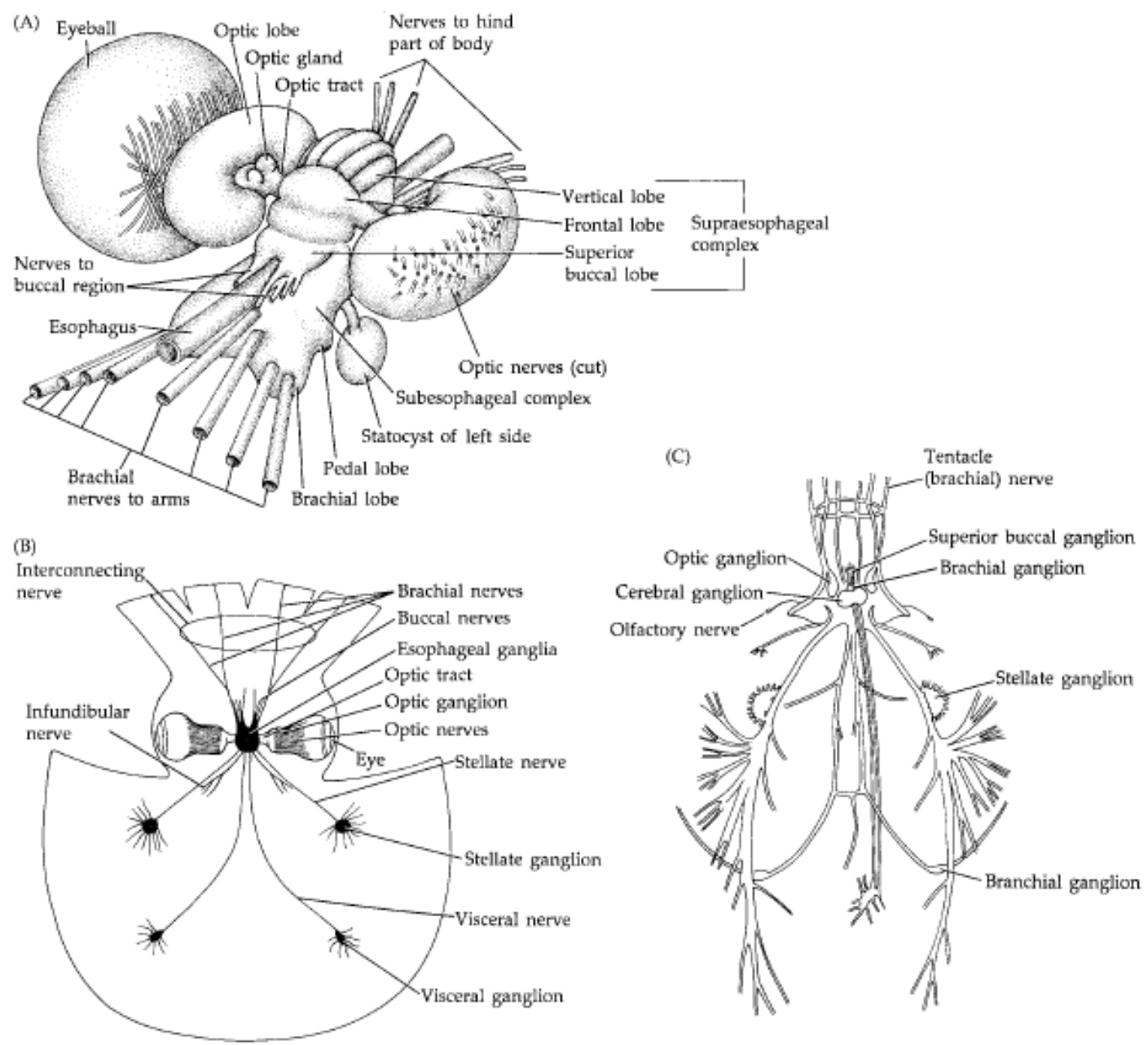






Figures & Tables are taken from: Reference: Brusca, R. C., & Brusca, G. J. **Invertebrates**. 2003. Sunderland, MA: Sinauer Associates, 2.





Figures & Tables are taken from: Reference: Brusca, R. C., & Brusca, G. J. **Invertebrates**. 2003. Sunderland, MA: Sinauer Associates, 2.

