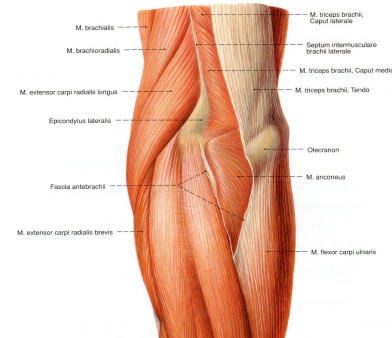
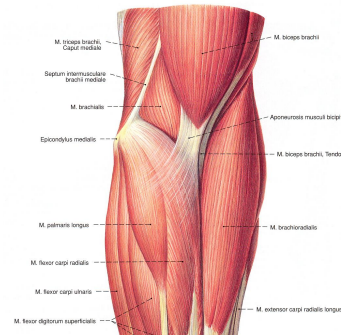
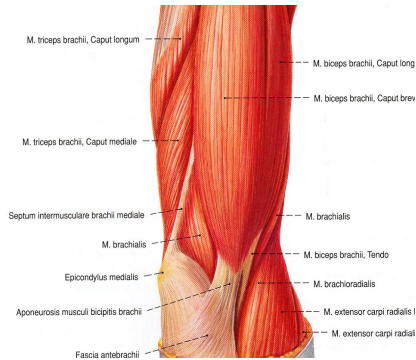
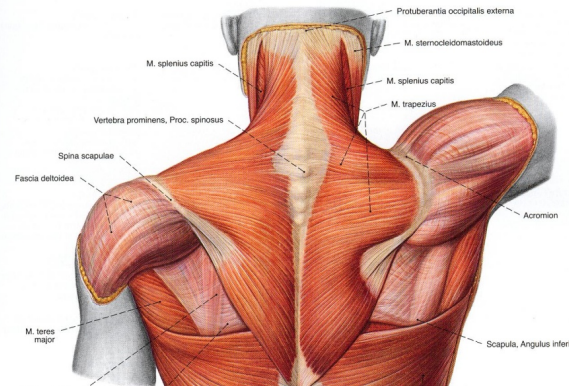


Pro Anatomi

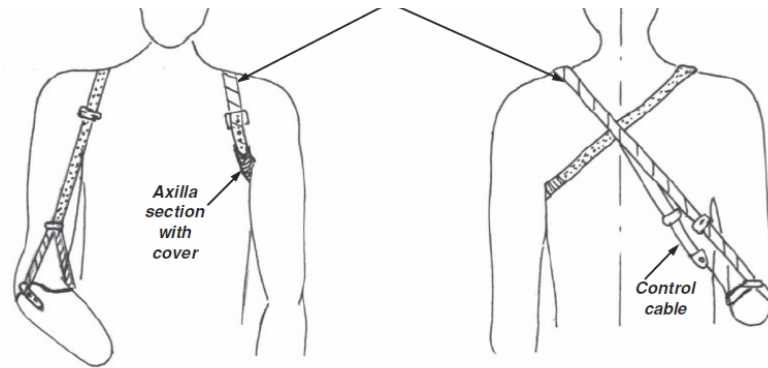
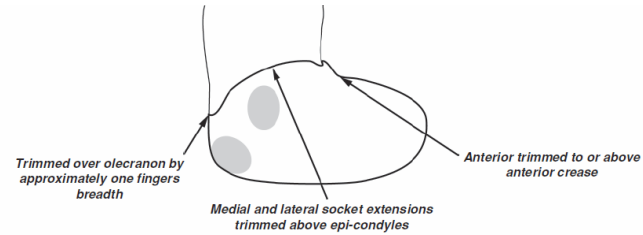
Önkol ve el kaslarının TR protez ve WHO'larla
ilişkilendirilmesi
11.hft

Serap Alsancak

- Bicepsbrachi, Brachioradialis kaslarının, dirsek bölgesi kemik çıkıntılarının TR soket için önemi ve skapular kasların hareketinin proteze aktarılması-Tartışma



Örn. TR soketler ve anatomik uyumu-Tartışma



Örn. FO ve WHO'lar, anatomik uyumu, biyomekanik farkları-Tartışma

