

Klasik Dönem



M.Ö. 480-323

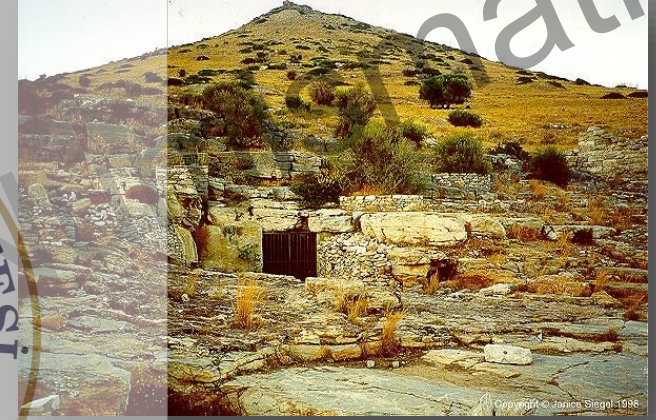
KLASİK

Üniversitemiği

Atina Kenti'nin Altın Çağı

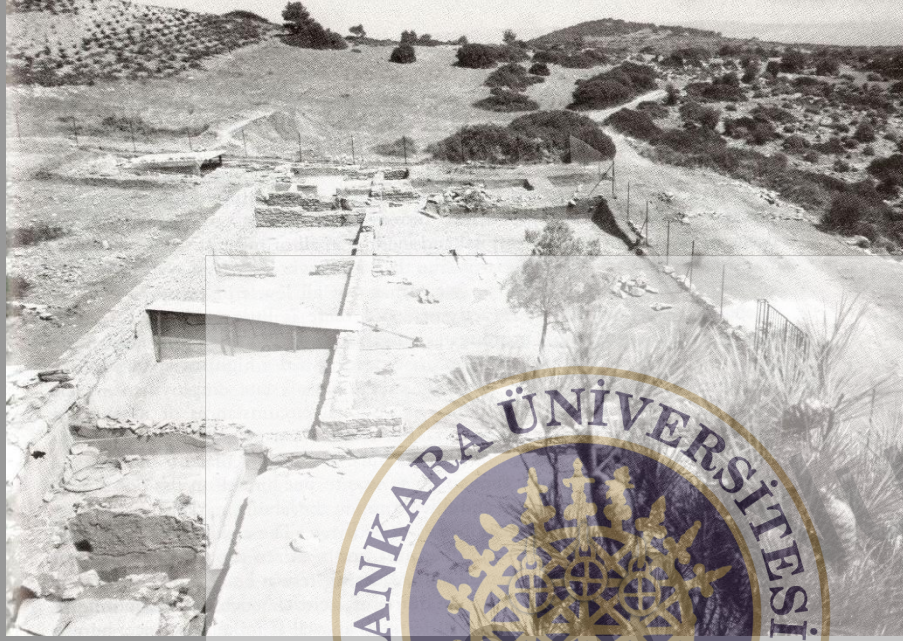


LAURION MADENİ



- Laurion Madeninin M.Ö. VI yy-V yy başında genişlemesi
- M.Ö. 483'de yeni ve zengin bir damar bulunması





Olivinite. Christina Gümüş Madeni- Lavrio 'dan gelmekte

Atina sikkeleri

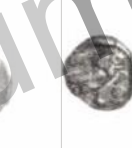
Ana birim: tetradrahmi



Birimler



160



Dekadrahmi

Tetradrahmi

Didrahmi

Drahmi

1 drahmi : 6 Oboloi

Dekadrahmi .



Dekadrahmi bir esit zel darptır. Genellikle 480-479 zaferleri ile ilgili sanılmıřtı, son zamanlarda 467'e tarihlenmiřtir.



Archaic Owl tetradrachm (16.24g, 22mm), Athens, c. 490-482 BC, Sear 1842v., Seltman Group Gi, Price and Waggoner Group IVg, SNG München 29, Szego 3



Classical Owl Type A full-crest tetradrachm (17.05g, 23mm), Athens, c. 454-431 BC, Sear 2526v., Starr Pl. 22 No. 3, Svoronos Pl. 11 No. 7



KLA 206



Perikles



480 v. sonrası Atina

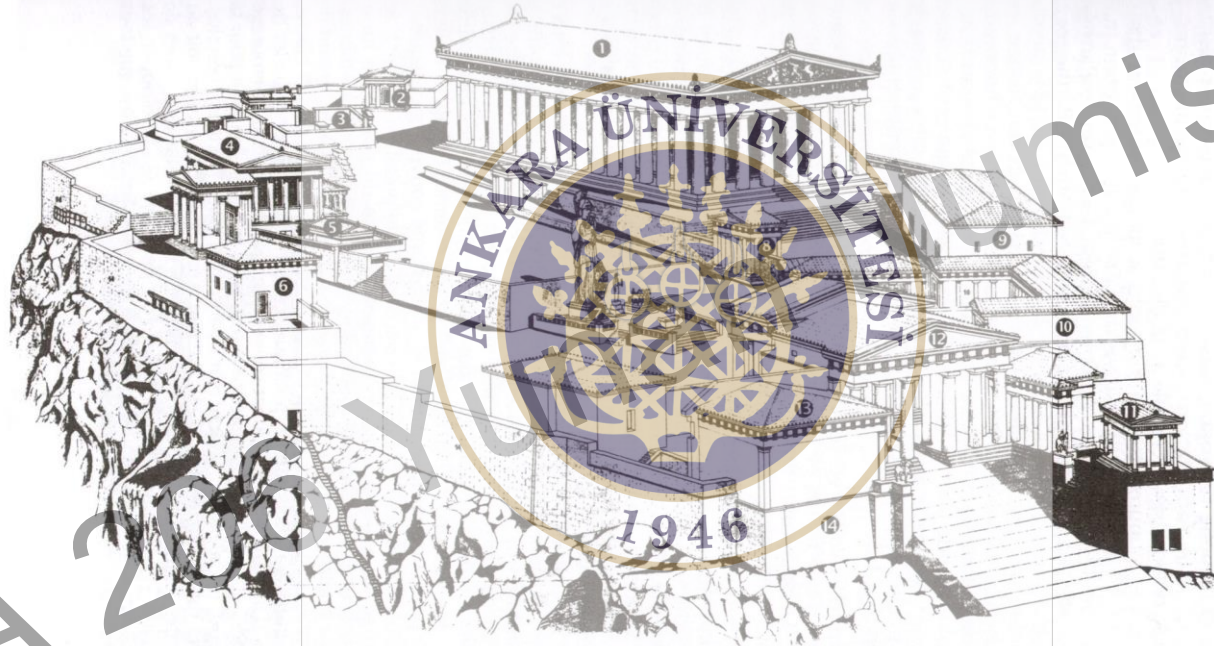


KLA 206 YU

lumismatiği

Atina Akropolis Planı

Fig. 2 : Athènes, restitution de l'Acropole (d'après J. Austen).



- 1 Parthénon
- 2 *Hérôn* de Pandion
- 3 Sanctuaire de Zeus Polieus
- 4 Érechtheion
- 5 Sanctuaire de Pandrosos
- 6 Maison des Arrhéphores
- 7 Statue en bronze d'Athéna Promachos

- 8 Porte monumentale
- 9 Chalcothèque
- 10 Sanctuaire d'Artémis Brauronia
- 11 Temple d'Athéna Nikè
- 12 Propylées
- 13 Pinacothèque
- 14 Mur de Thémistocle

Korinthos Sikkeleri



KLA 206 YU
Eğilimismatiği

Myron



Aigina ve Önemi



Aigina Kenti



164



166



165

M.Ö. 525

M.Ö. 457

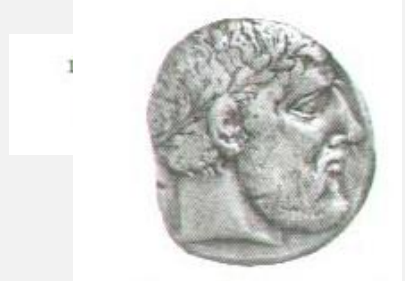
KLA 206

üniversitesi

Aigina Ağırılık Birimini kullananlar

Thebai

Elis



Historical watermark text: "KLA 2000" and "Historiography".

Pheidias ve Zeus Olympios

