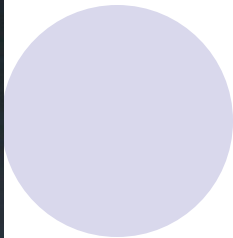


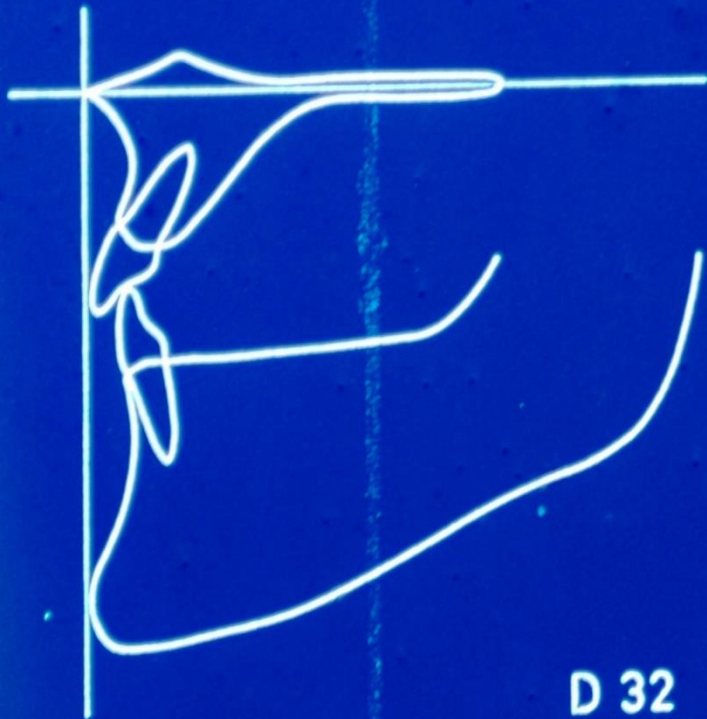
1-20











D 32



D 81

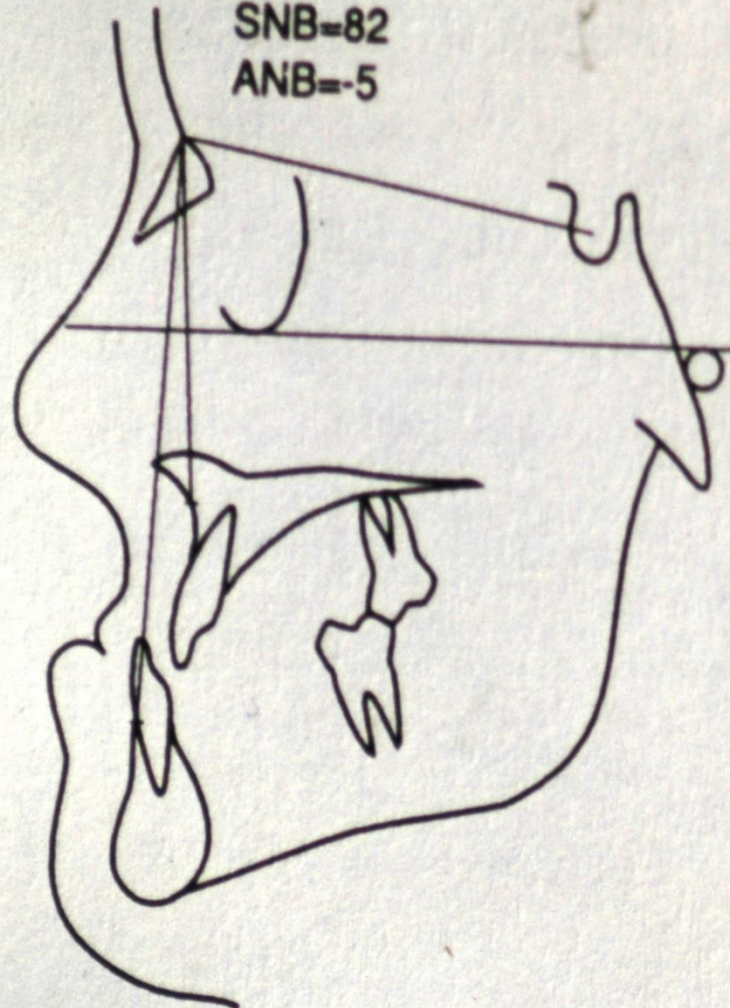
Fig. 13. Dento-alveolar compensation for variations in sagittal jaw relationship. Subject D 81: reduced upper incisal inclination and upper alveolar prognathism compensate for large sagittal jaw relationship, thus maintaining normal overjet. Subject D 32: increased upper incisal inclination and lower alveolar prognathism compensate for reduced sagittal jaw relationship, thus maintaining normal overjet. From Solow (1970).





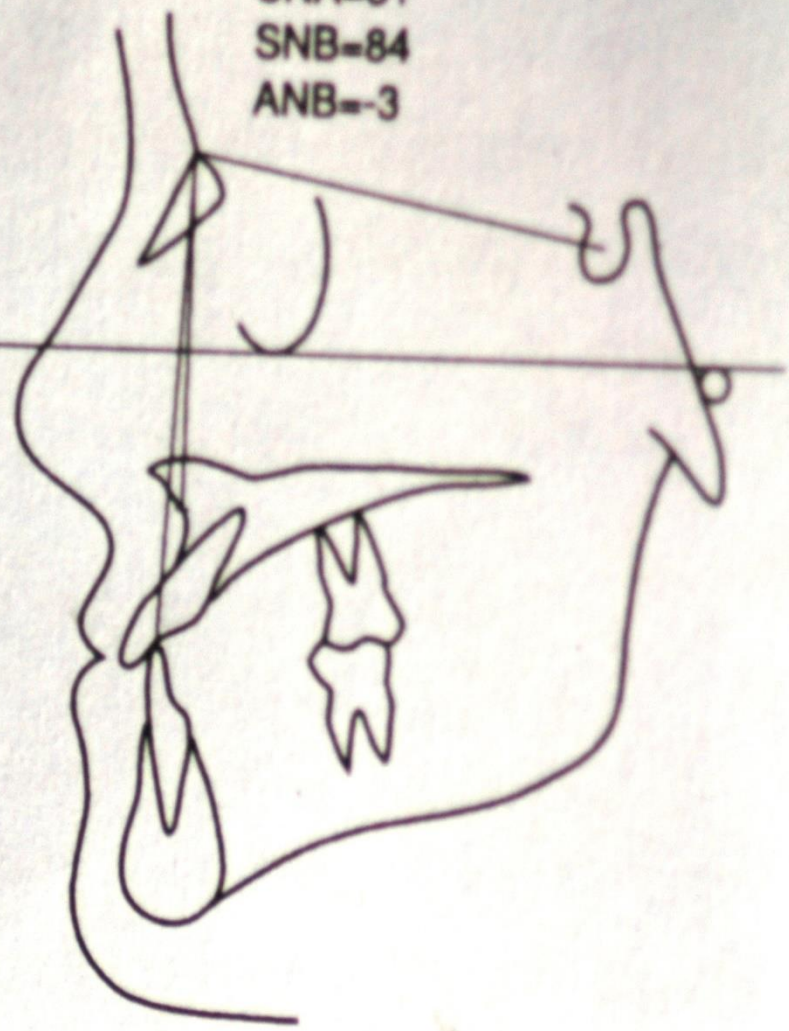


SNA=77
SNB=82
ANB=-5

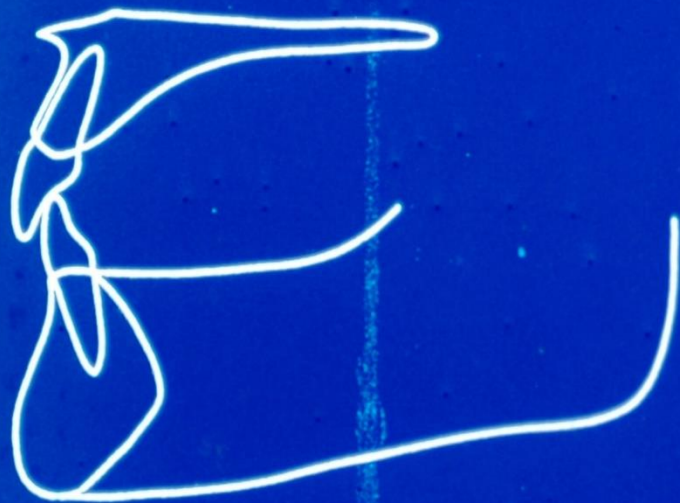


A

SNA=81
SNB=84
ANB=-3



B

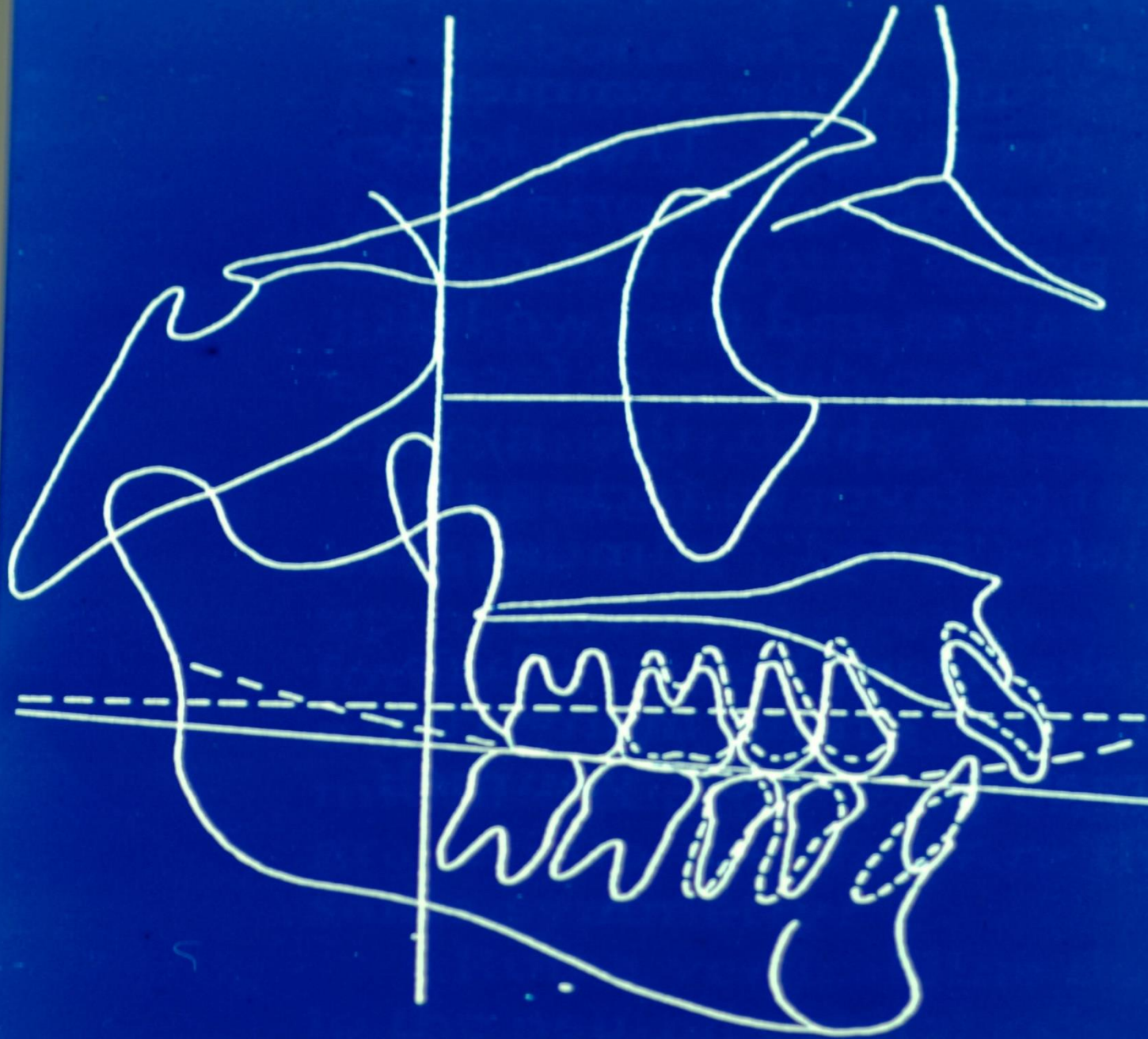


D 17



D 70

Fig. 14. Large differences in anterior alveolar height compensate for differences in vertical jaw relationship thus maintaining normal overbite. From Solow (1970).

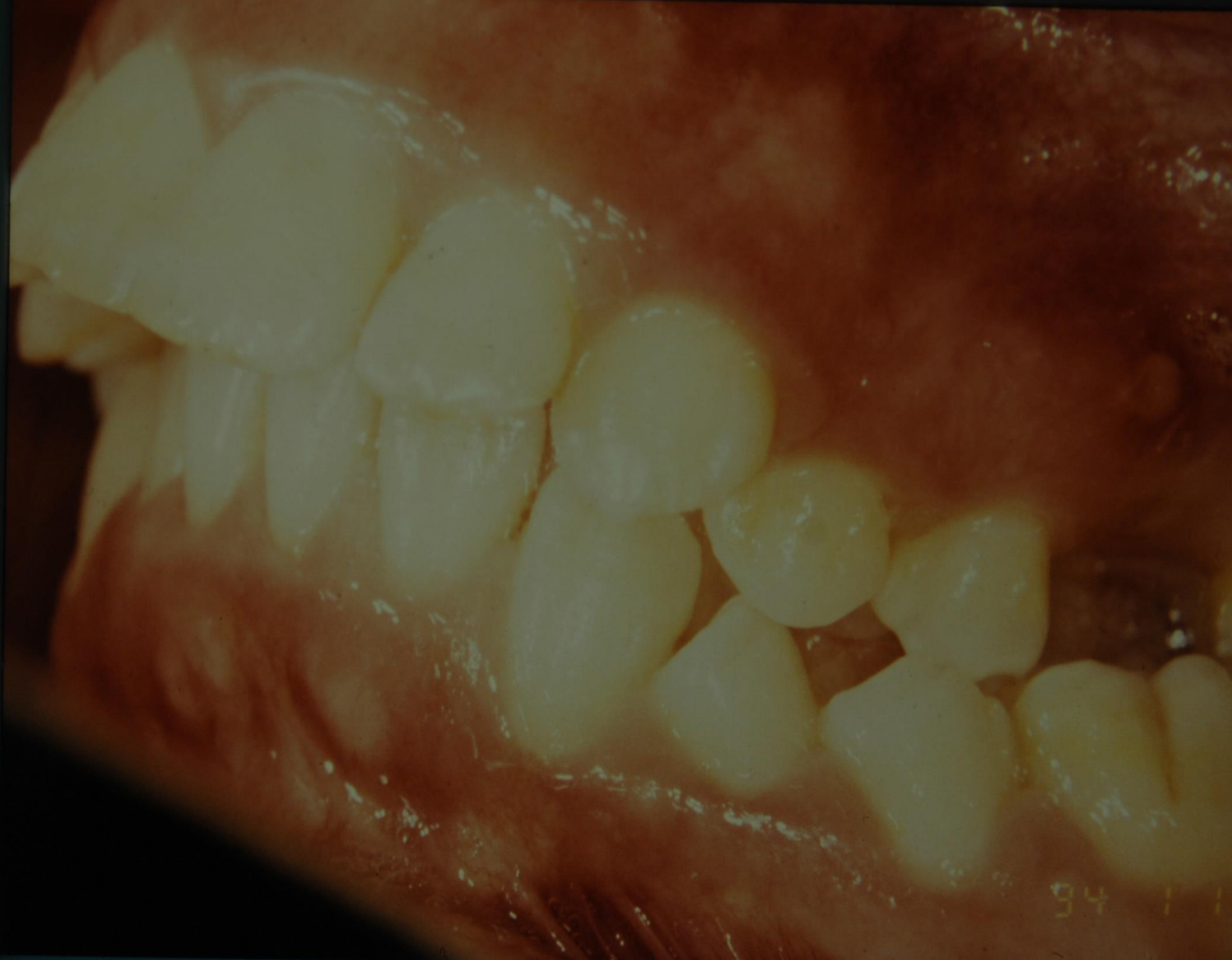








94 1 17



94 1 1



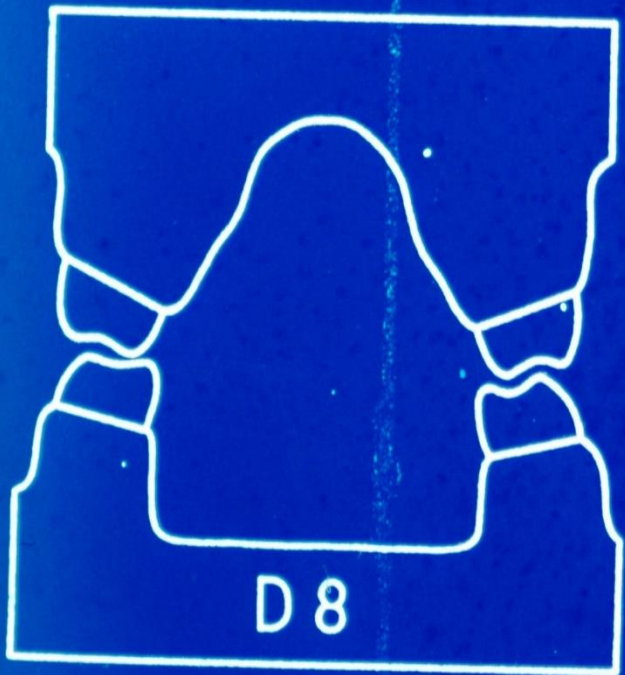


Fig. 15. Dento-alveolar compensation for variations in transversal jaw relationship as seen on dental casts sectioned at the first molars. Subject D 8: discrepancy between a narrow maxillary base and a wide mandibular base compensated by buccal tilting of upper teeth and upper alveolar arches, and by lingual tilting of lower teeth. Subject D 26: discrepancy between a wide maxillary base and a narrow mandibular base compensated by lingual tilting of upper teeth and alveolar arches and by buccal tilting of lower teeth and alveolar arches. From Solow (1970).