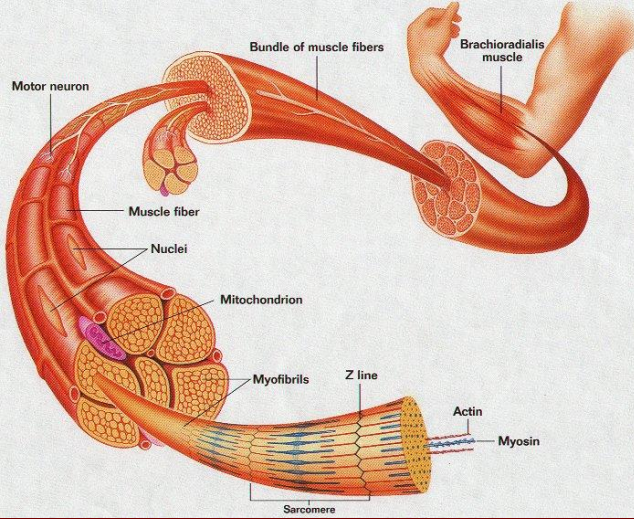


ET HİJYENİ, MUAYENESİ VE TEKNOLOJİSİ DERS NOTLARI (3)

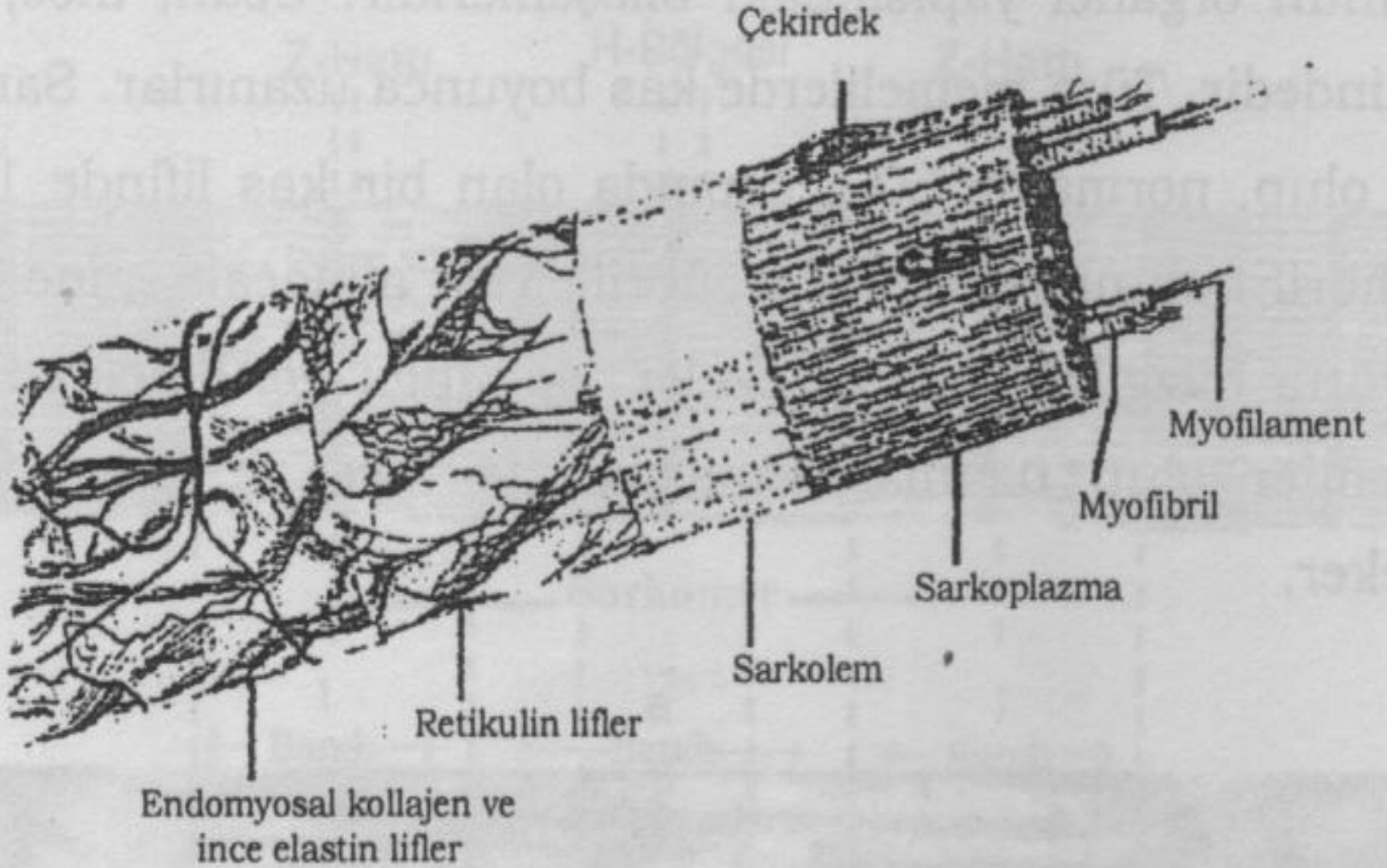


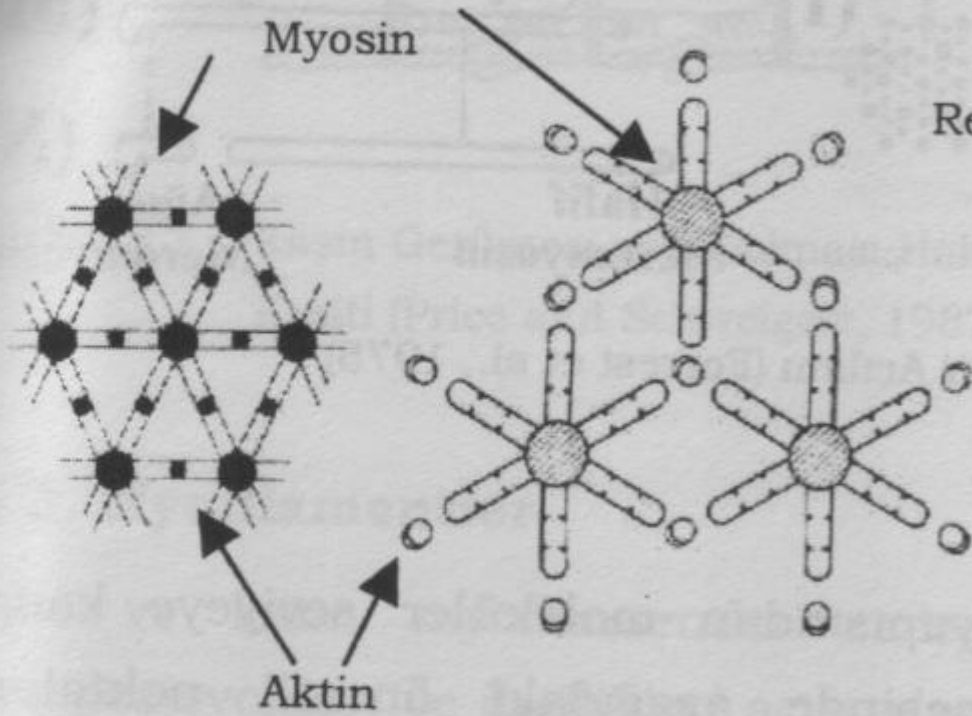
PROF.DR.T.HALÛK ÇELİK

**Ankara Üniversitesi Veteriner Fakültesi
Gıda Hijyeni ve Teknolojisi Bölümü**

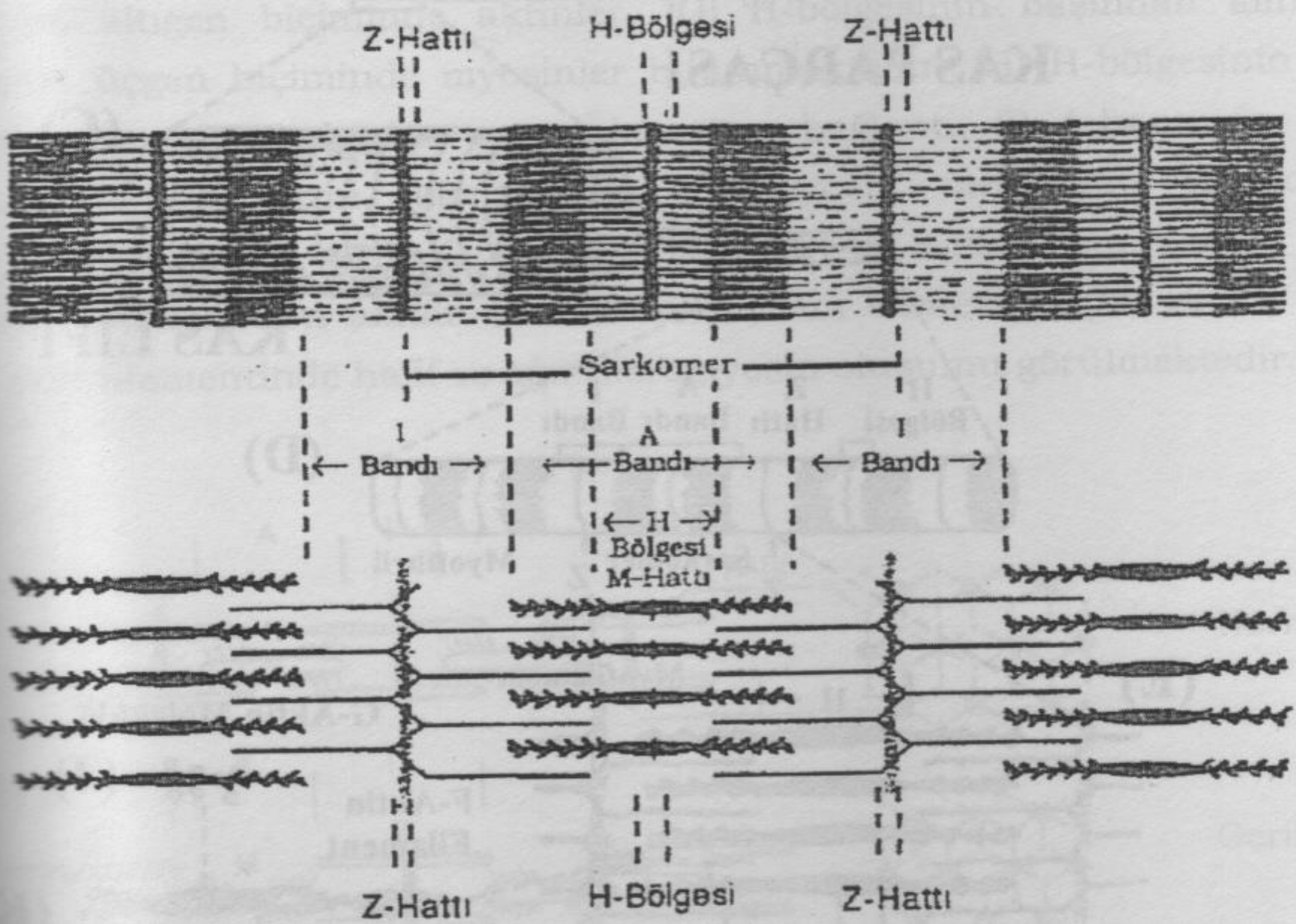
**KAS YAPISI VE KASILMA
POST-MORTEM DEĞİŞİKLİKLER**

Kas yapısı

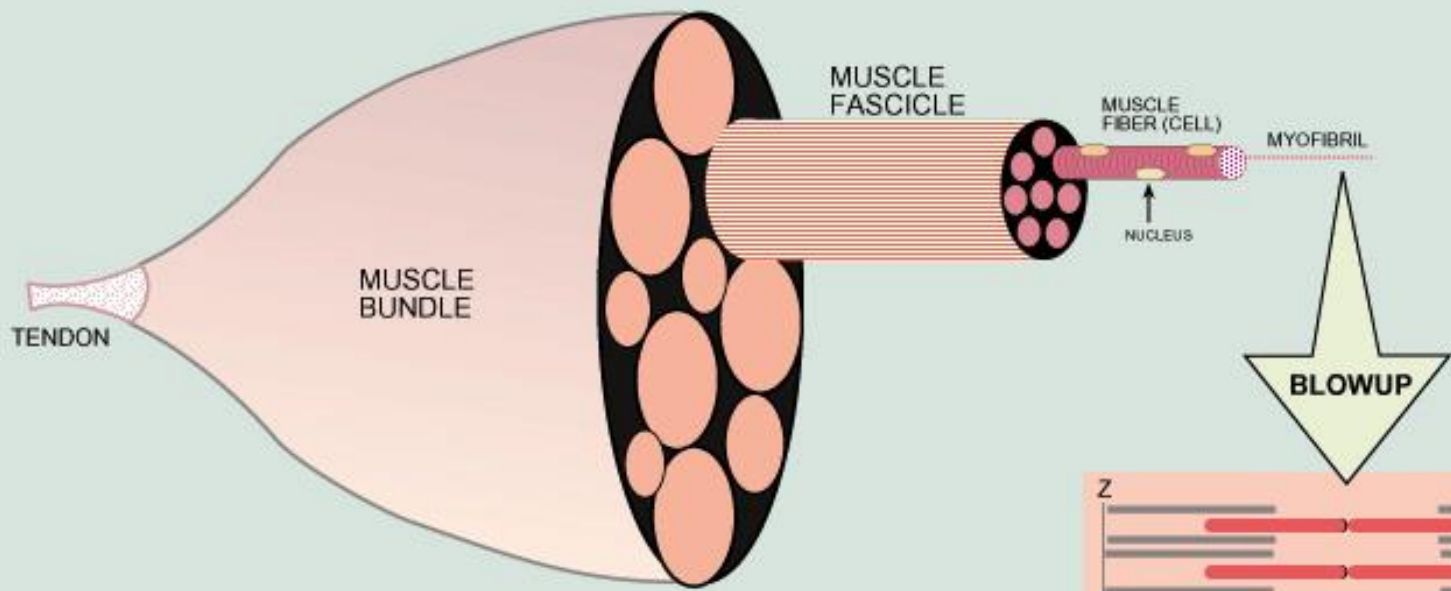




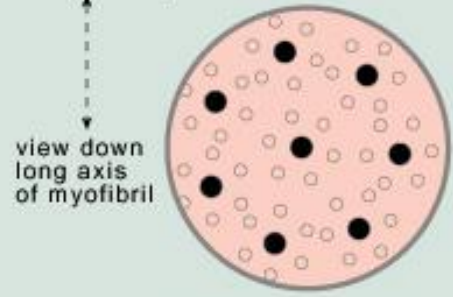
Resim 3.5. Myofibrillerin Boyuna Kesiti
(Belitz ve Grosch, 1993)



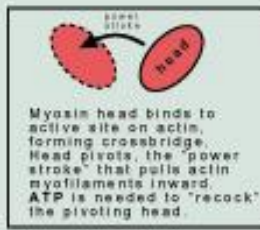
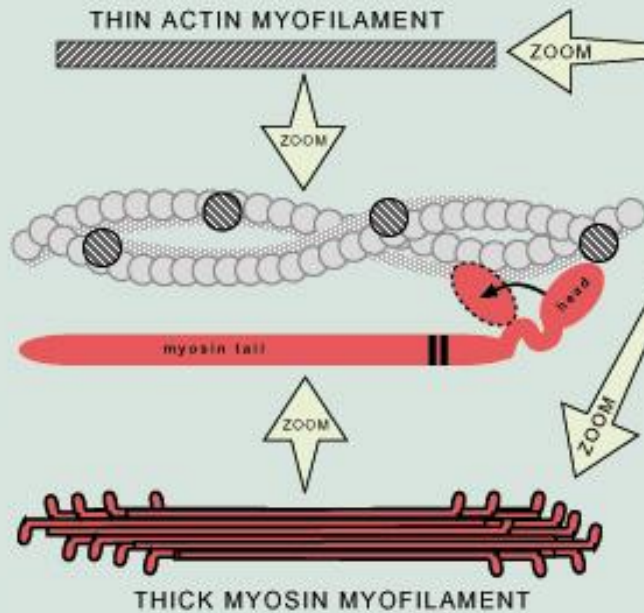
Çizgili kasta miyofibrilik yapı ve sarkomer
(Price and Schweigert, 1987)



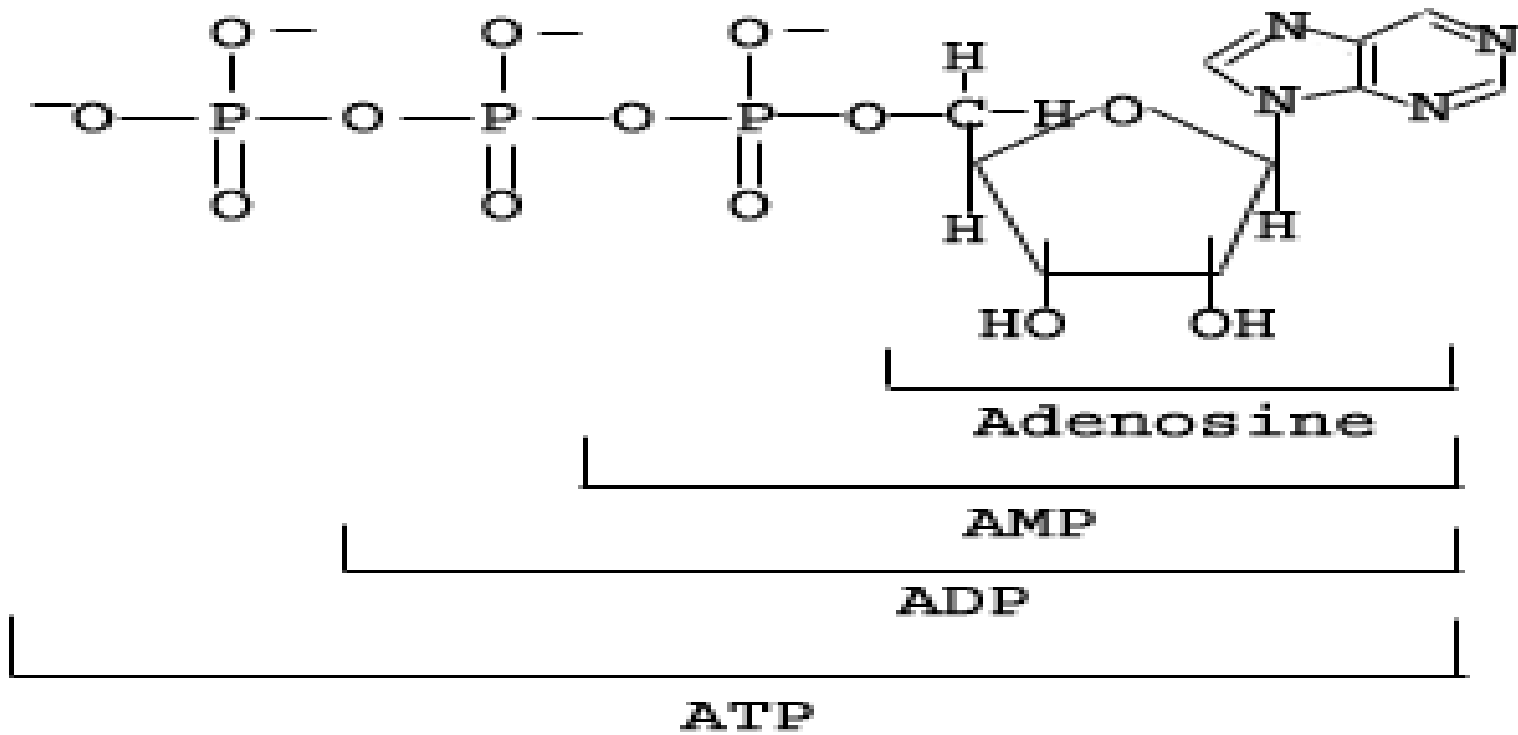
side view of myofibril

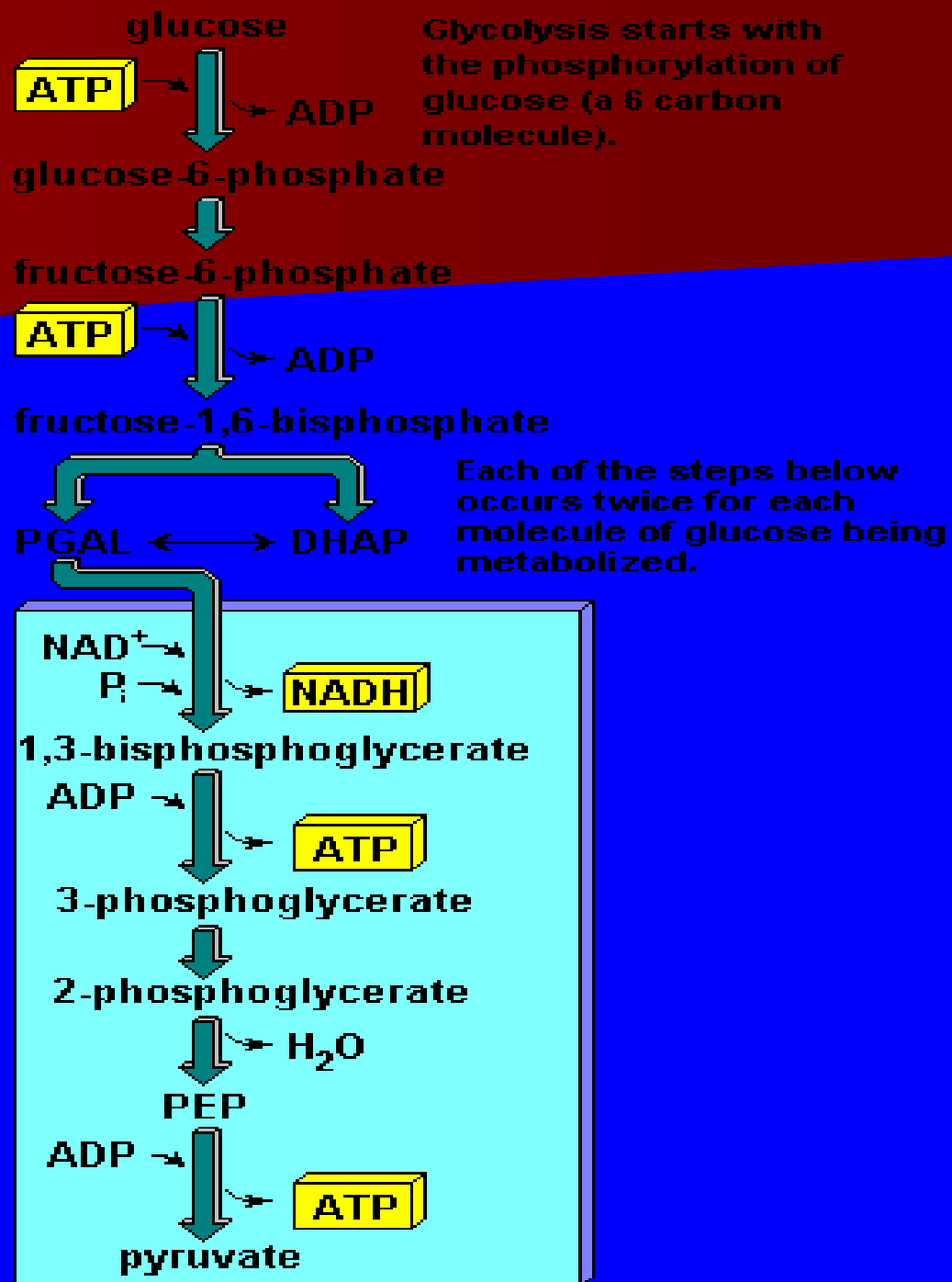


Myofibril array in the myofibril viewed head-on showing the 6:1 hexagonal packing array (6 thin actin myofibrils for every thick myosin myofibril)



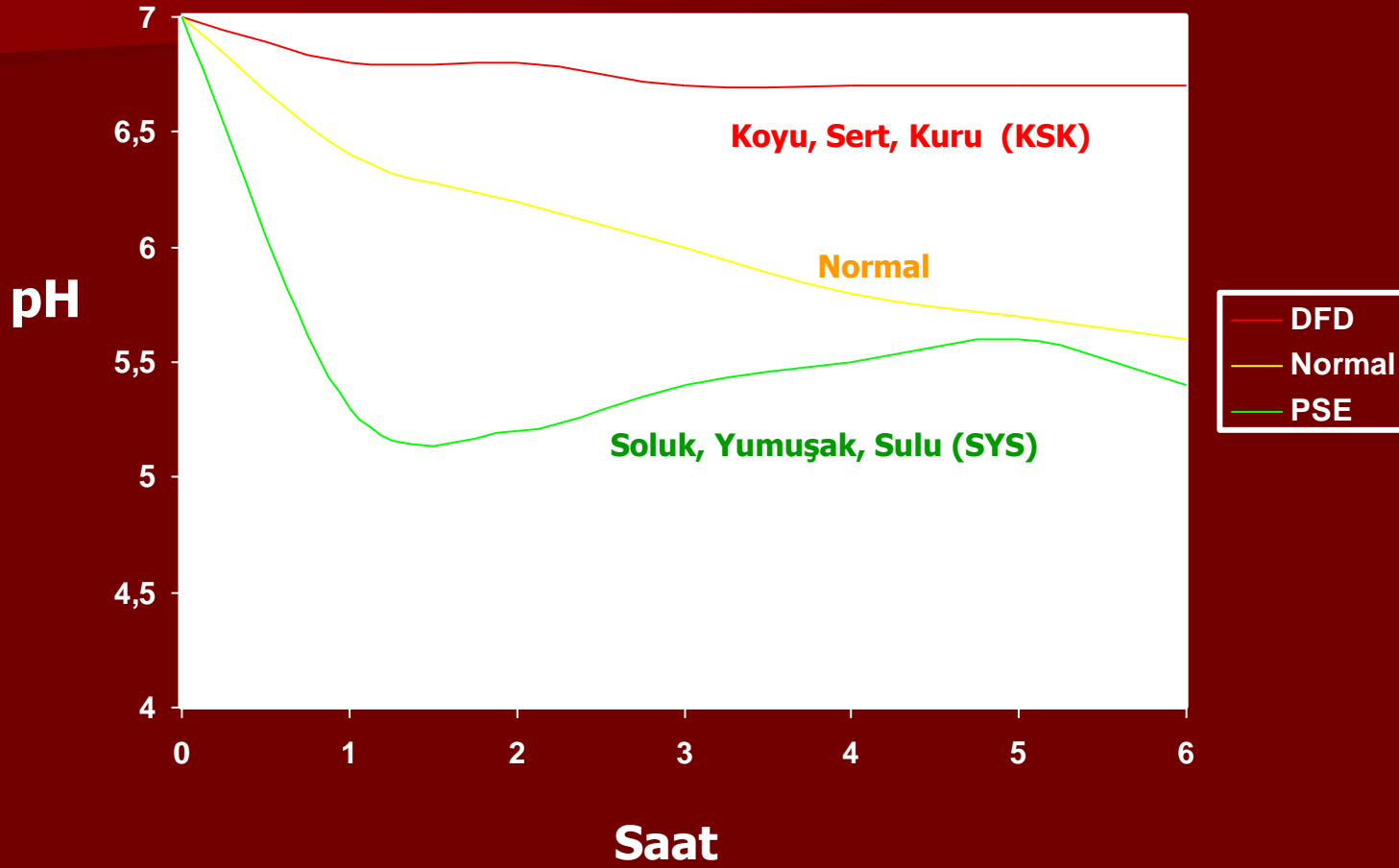
Aerobik Solunum



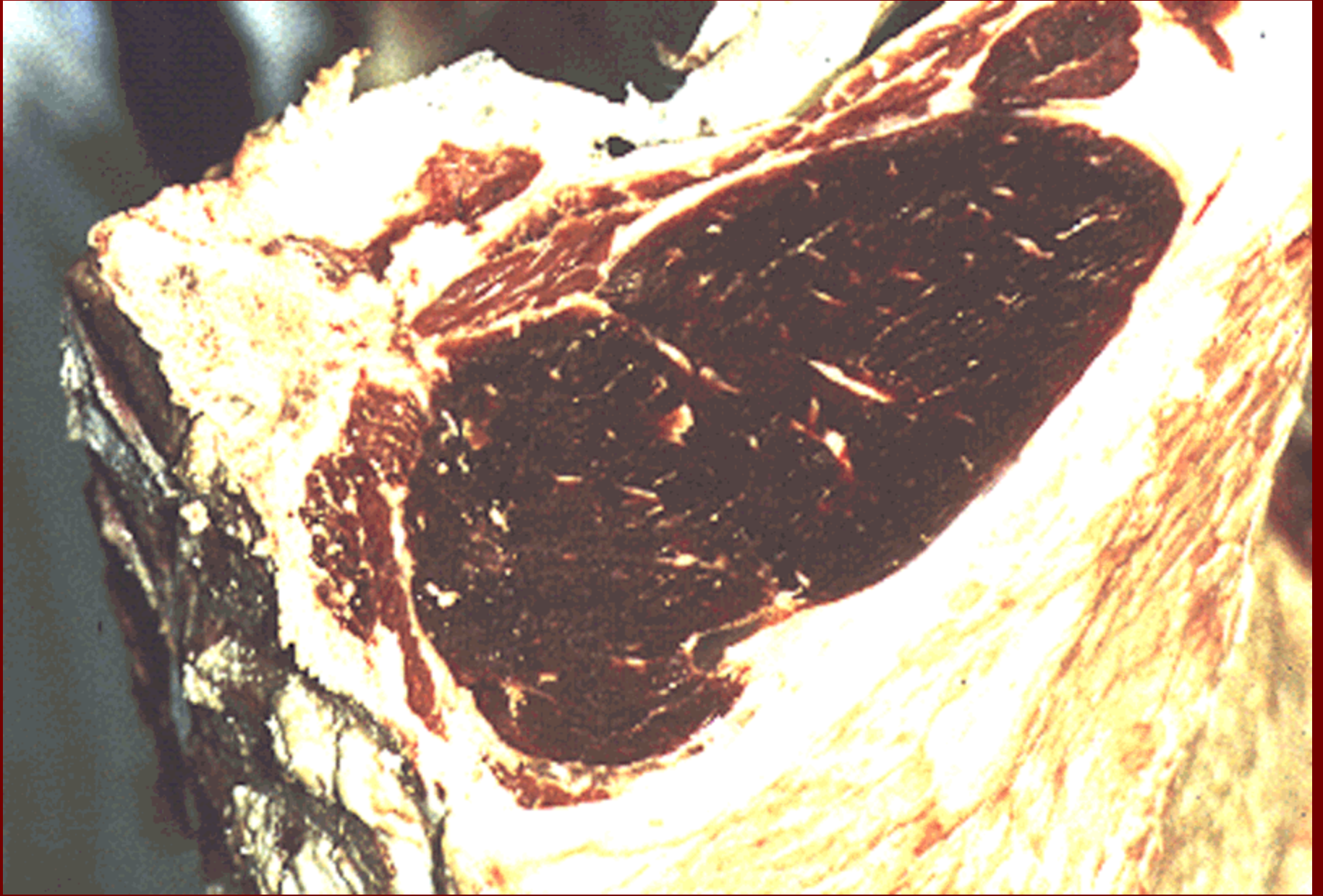


Kesim sonrası glikolizis gelişimini etkileyen faktörler

İç Faktörler	Dış Faktörler
Hayvan Türü	Kesim öncesi ilaç uygulamaları
Genotip	Kesim sonrası askıya alma
Yaş	Kesim sonrası sıcaklık
Kas tipi ve yapısı	Elektriksel stimülasyon uygulaması
	Kesim sonrası parçalama
	Kesim sonrası tuzlama
	Kesim sonrası basınç uygulaması
	Kesim sonrası oksijen durumu

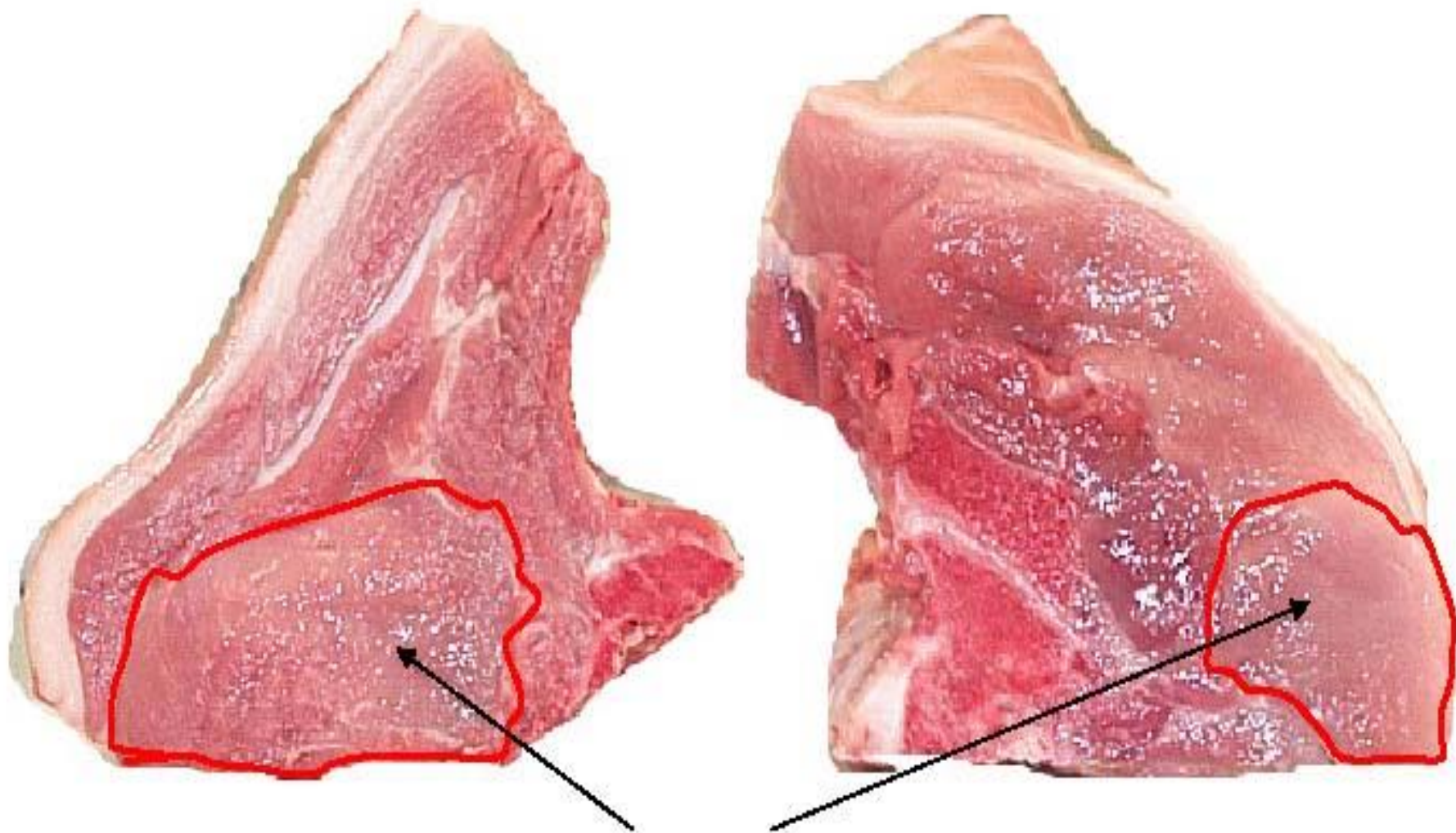


Koyu Kesitli Et



Head end

Tail end



Loin eye muscle – select head end
as muscle bigger for sensory panel