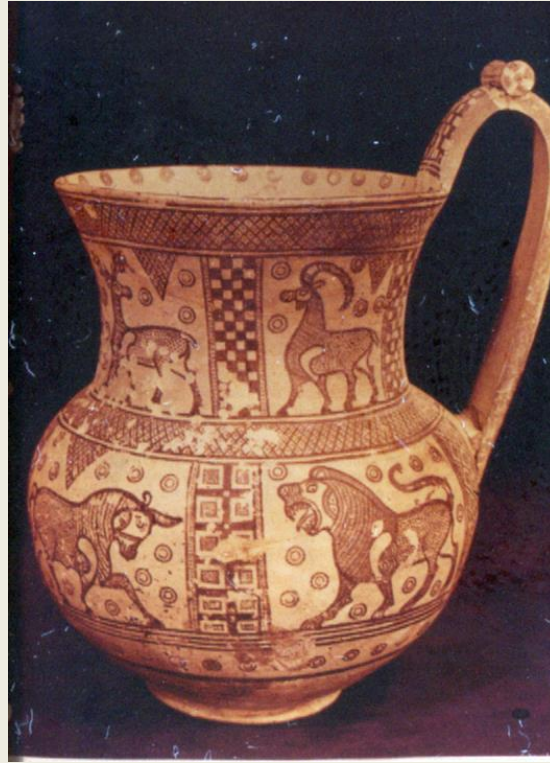
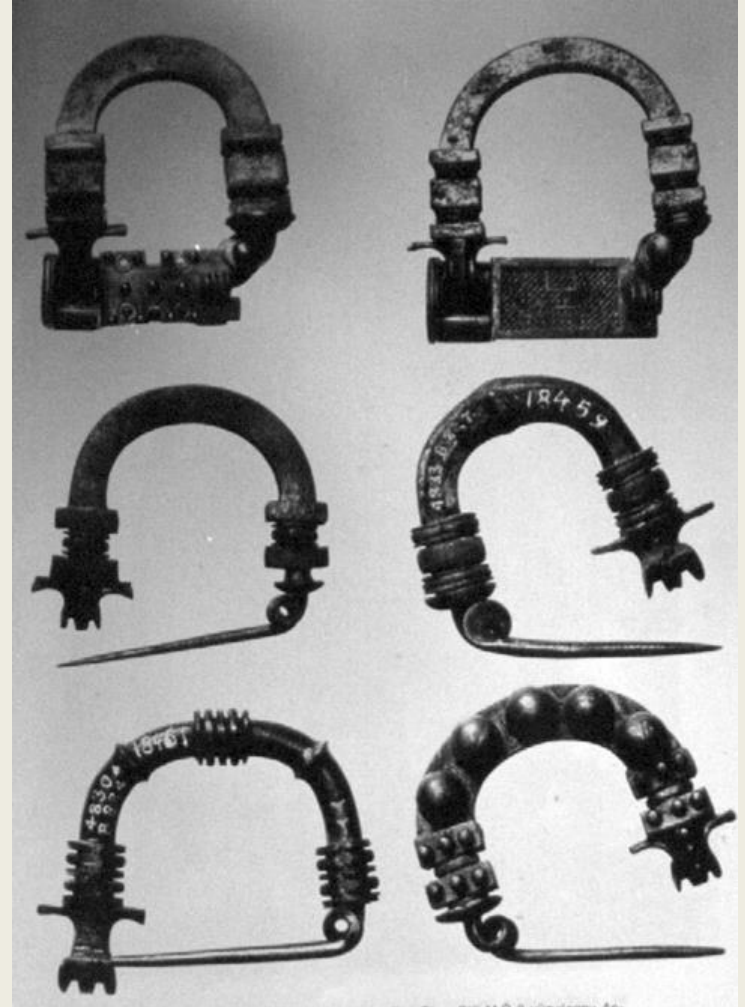
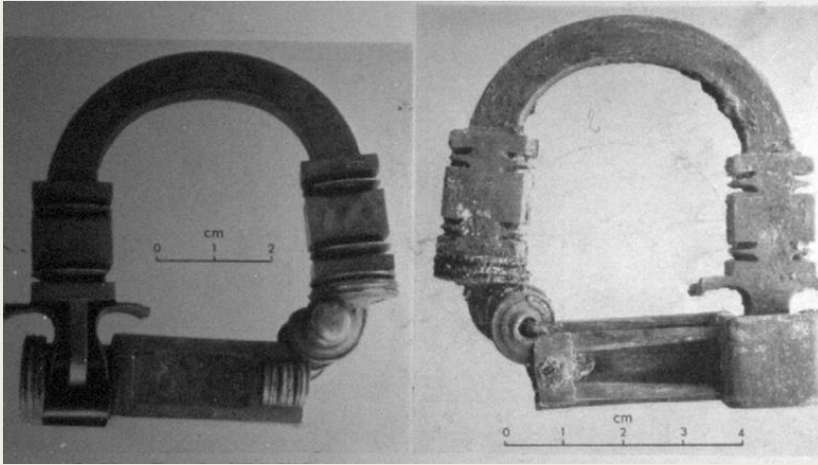
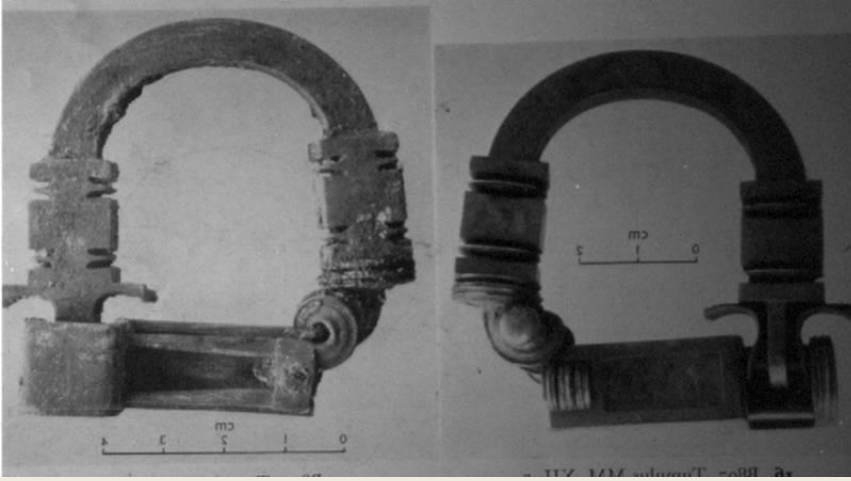


ANTİK AĐDA ANADOLU

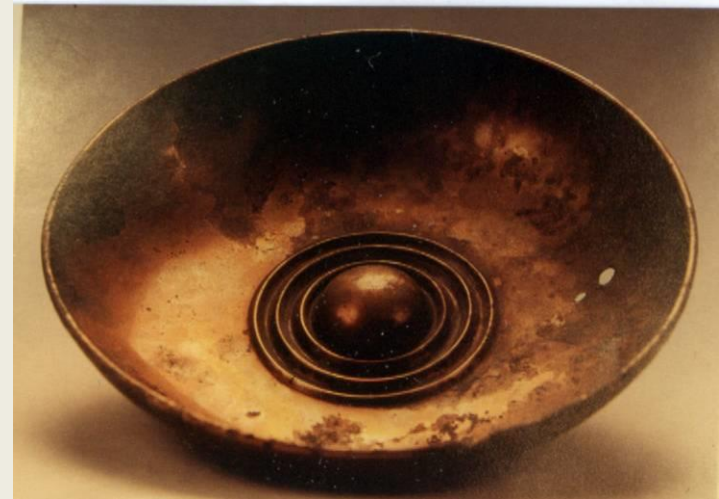
KONU 3 FRİGLER 2



Frigler maden işçiliğinde yüksek bir düzeye ulaşmıştır. Yaylı çengelli iğneler (**FİBULA**) dönemin “teknolojik” bir Frig buluşu olup, Assur ve Geç Hitit merkezlerinde aranan ve beğenilen sanat eserleri idi. Sonradan Hellen sanatına da geçtiler ve İonlu sanatçılar tarafından taklit edildiler.

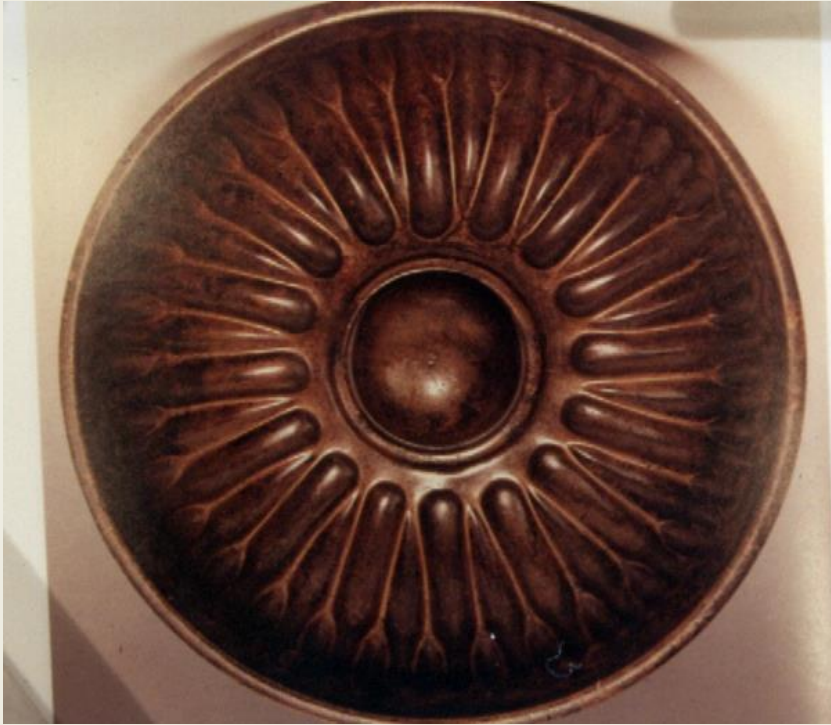


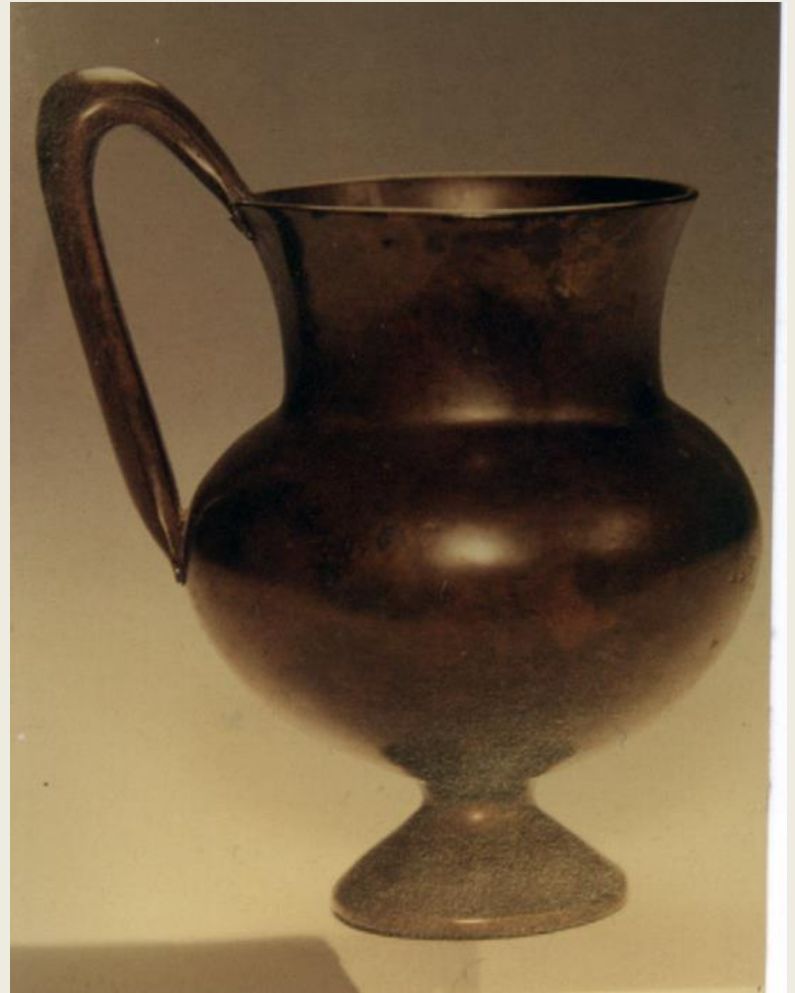
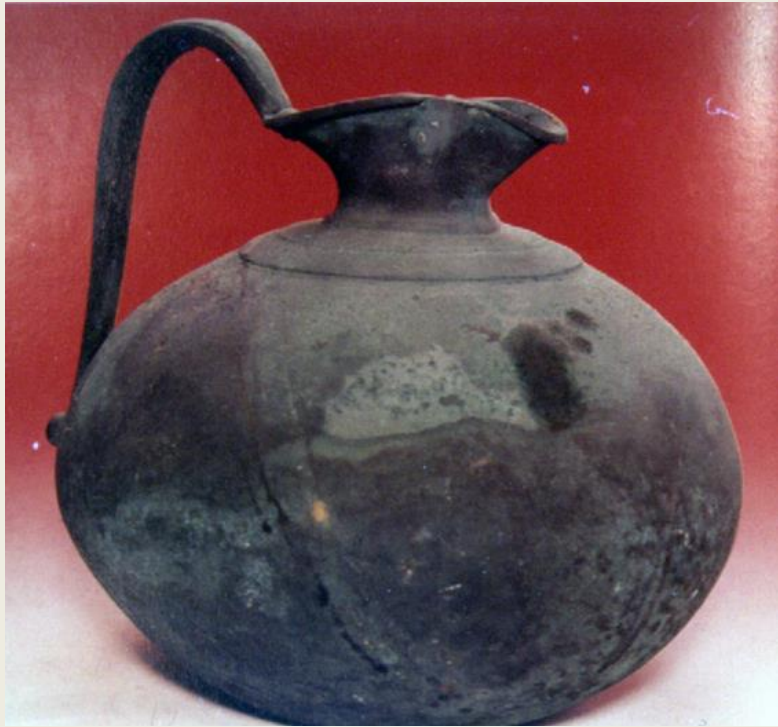
Maden eserler arasında olağanüstü güzellikte bronz taslar, tabaklar ve bronz kazanlar ile kemerler de yer almaktaydı. Ayrıca bu eserler de İon ustaları tarafından taklit edilmiştir.



Omphaloslu Phialeler

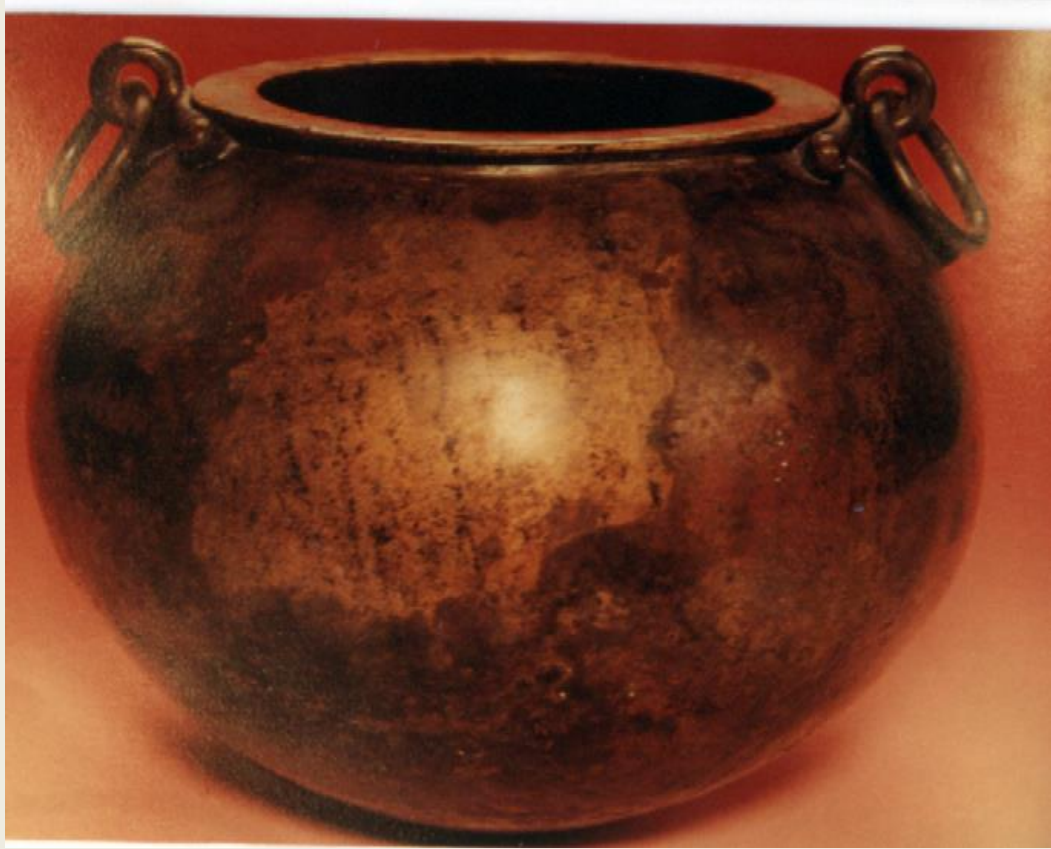
Kaburgalı Omphaloslu Phialeler



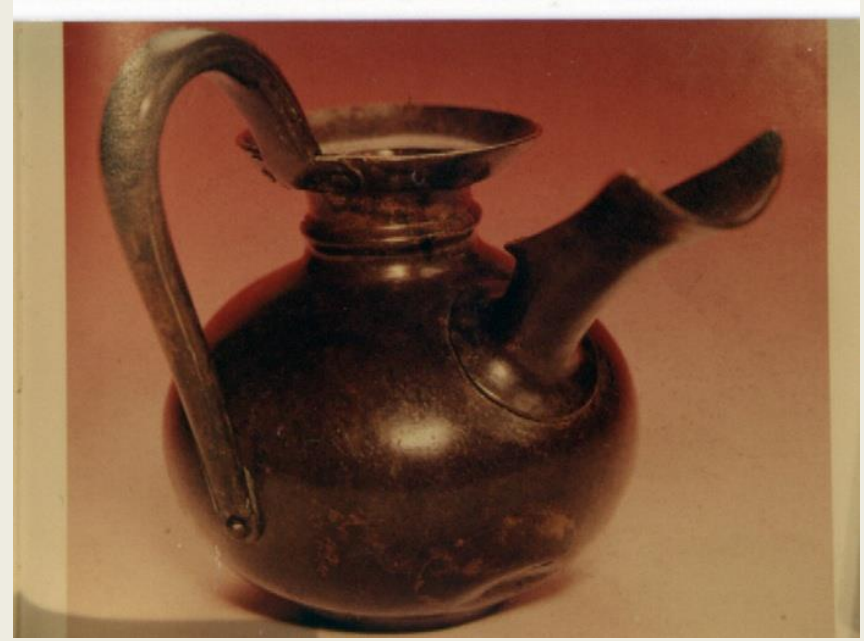


Kauldron/Kazan ve Protomları





Emziđi süzgeçli çaydanlık biçimli sürahi

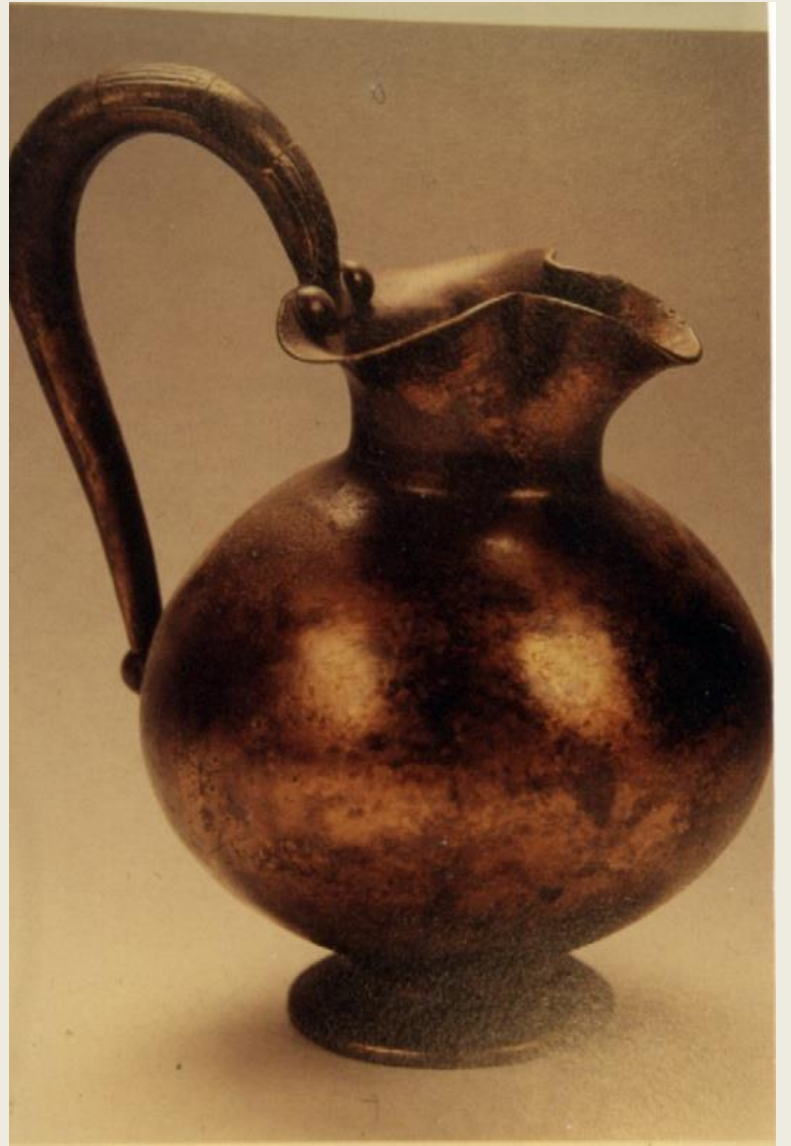






Ryhton (Situla)



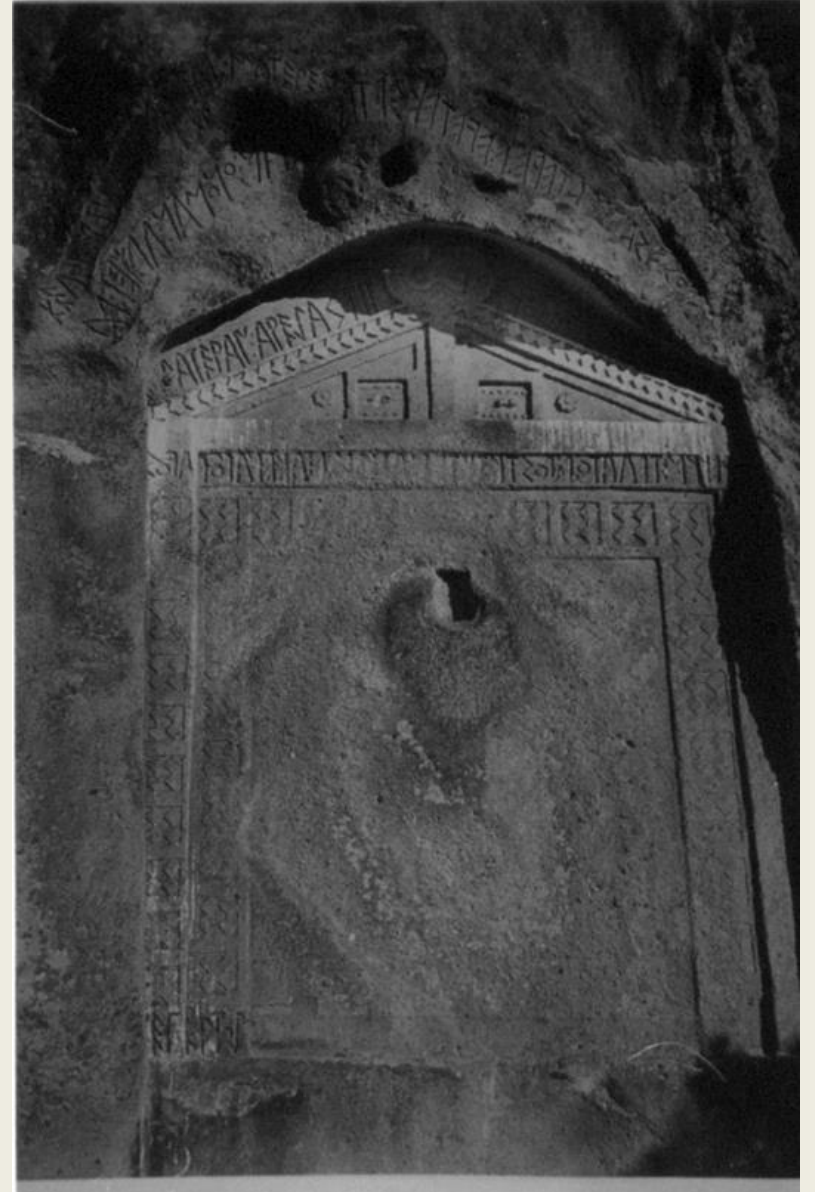
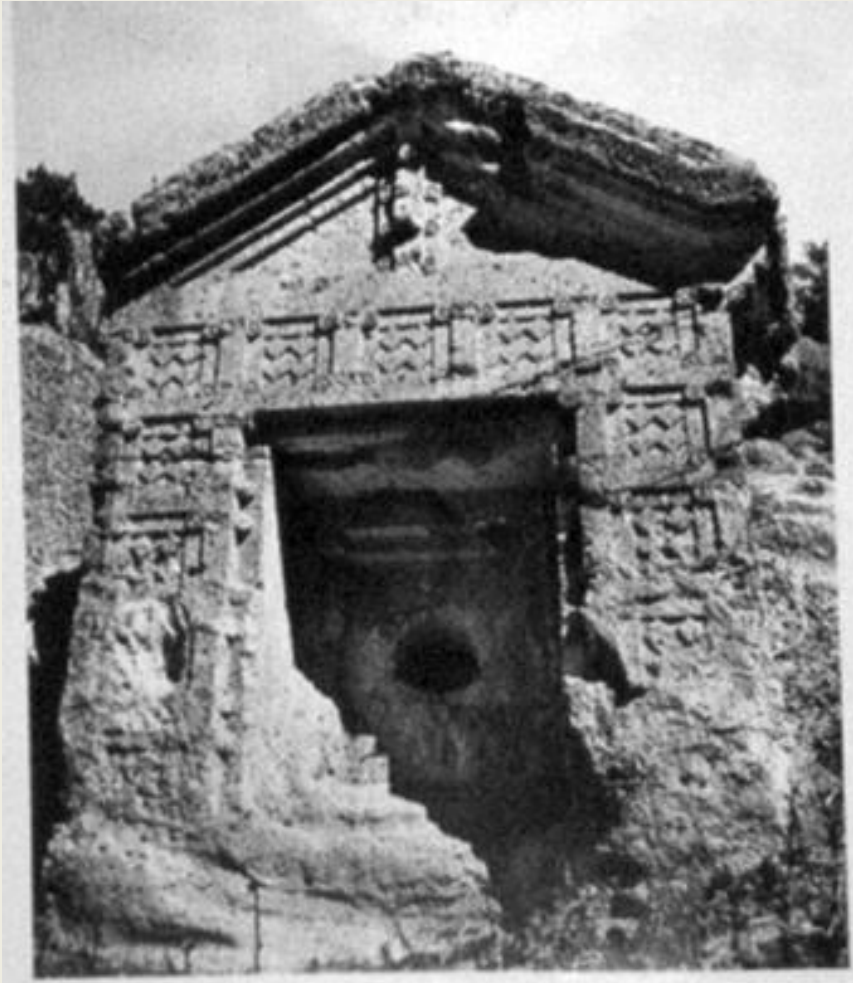




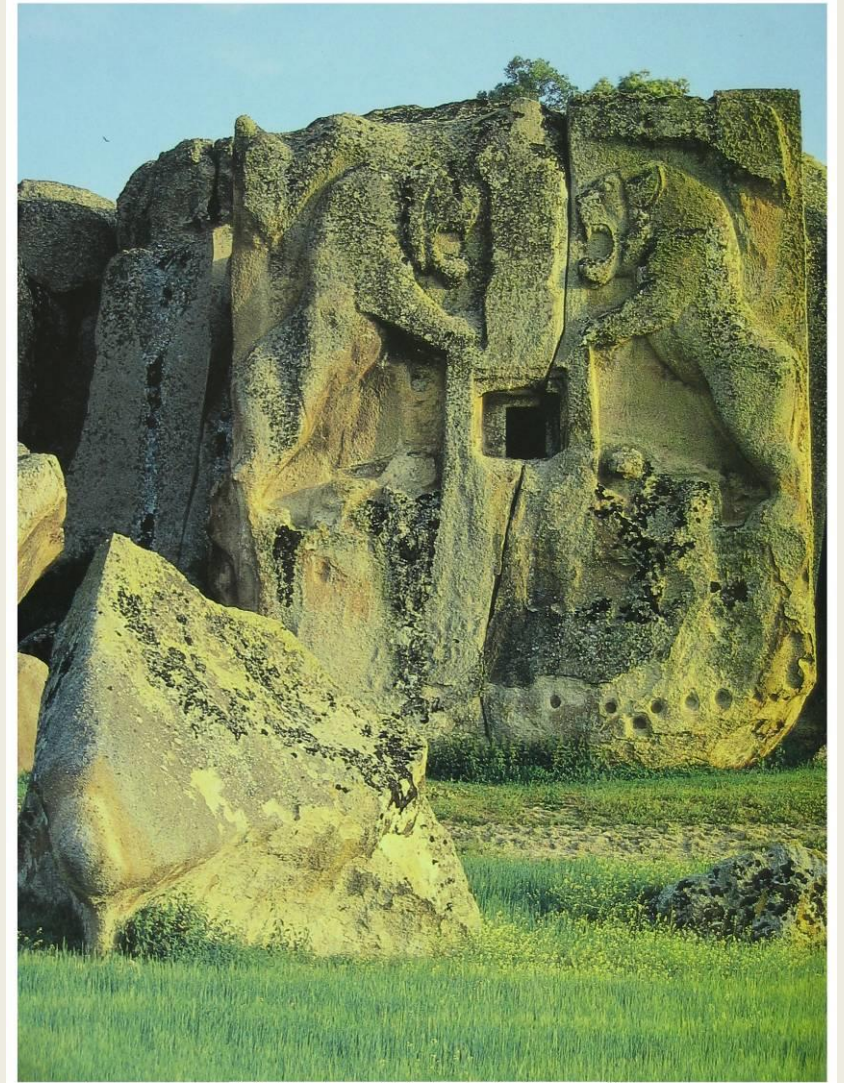
Frig Mimarisi



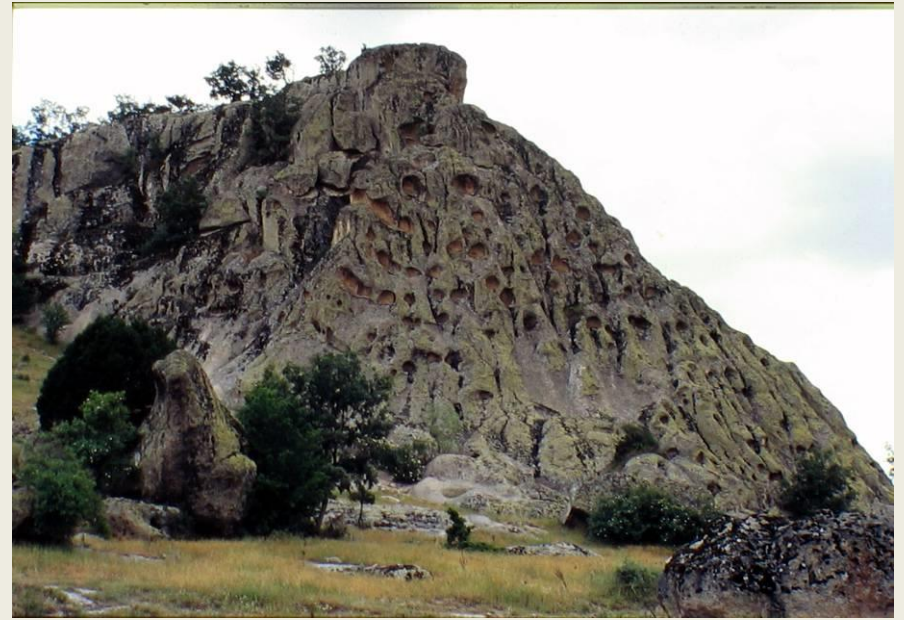
Frig Kaya Anıtları



Frig Kaya Anitları



The Turkish landscape, TC Kultur Bakanlğı Prestij Yayınları, s.68

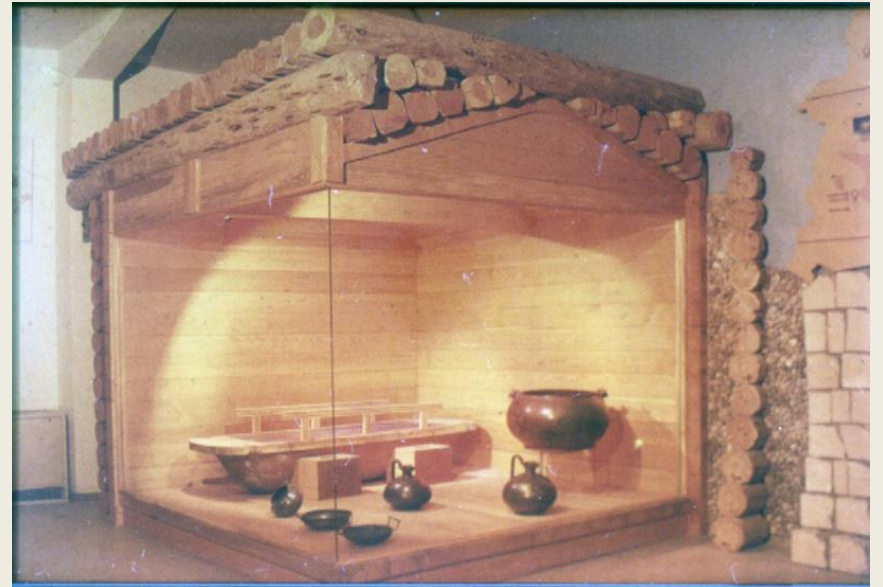


Frig Kaya Mezarları

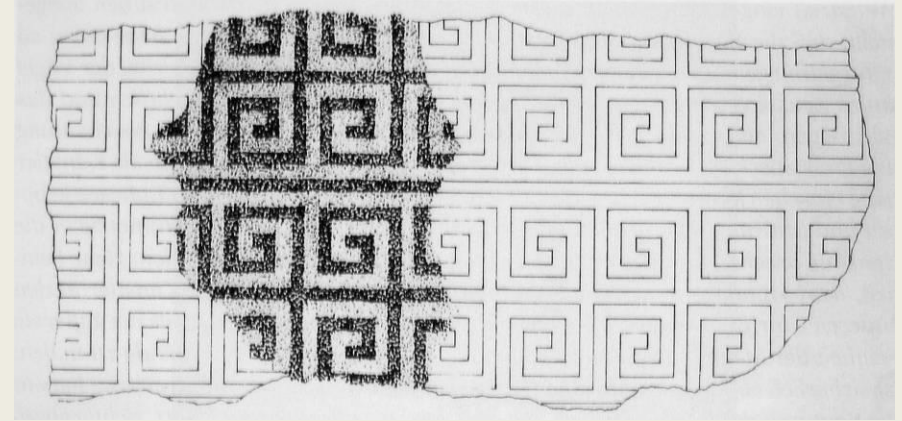
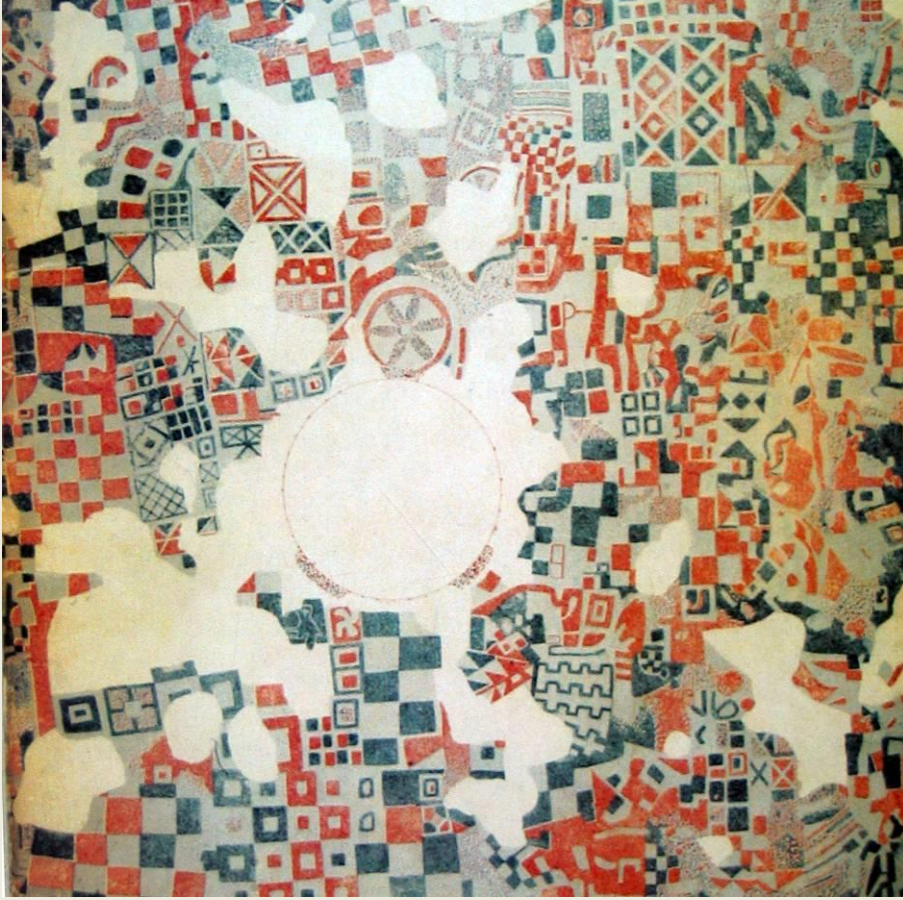




Frig Tömülüsleri



Evlerin ya da sarayların tabanları mozaik döşelidir. Tarihin en eski mozaik örneklerinden biri Gordion'da bulunmuştur.



Kybele

