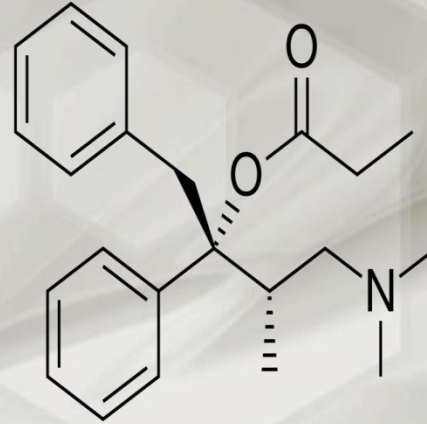
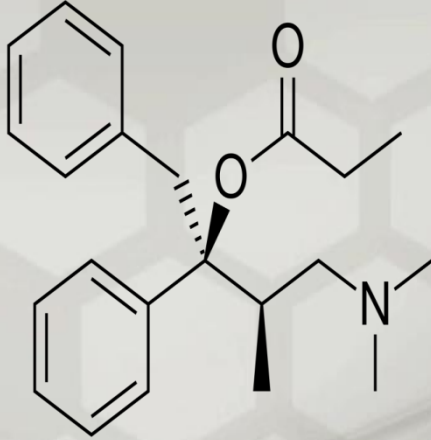


IV- Enansiyomerler birbirlerinden tamamen farklı etkiler gösterebilir

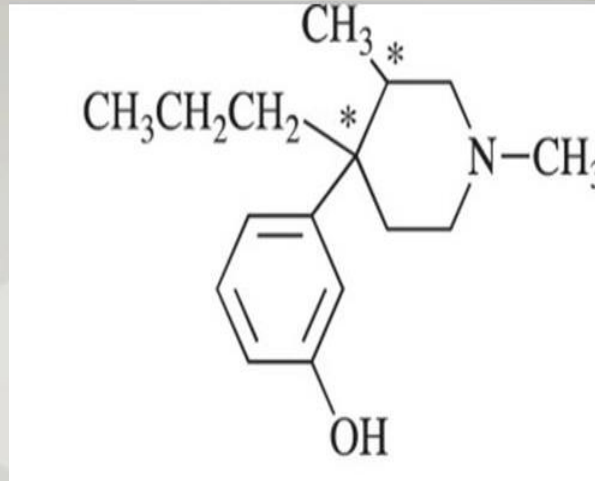


Dekstropropoksifen Levopropoksifen

2S, 3R-(+)-Dekstropropoksifen **analjezik** etkili

(-)-Enansiyomer levopropoksifen **antitüssif** bir ilaç

## V- Enansiyomerler zıt etki gösterebilir

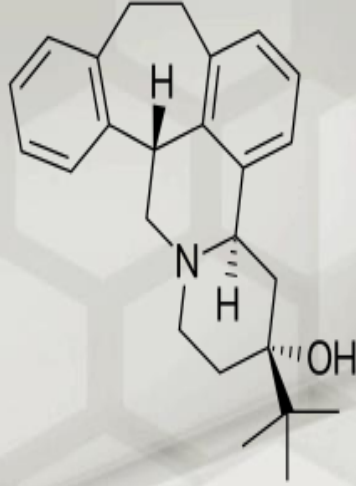


**(+)-Pisnadol** narkotik analjezik

(-)-izomer narkotik antagonist

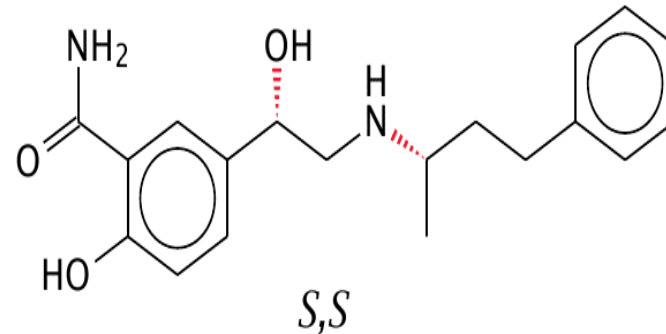
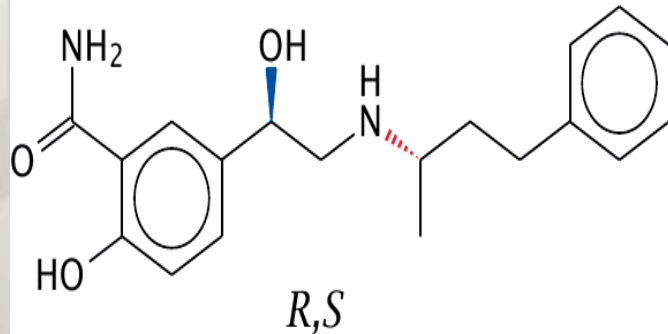
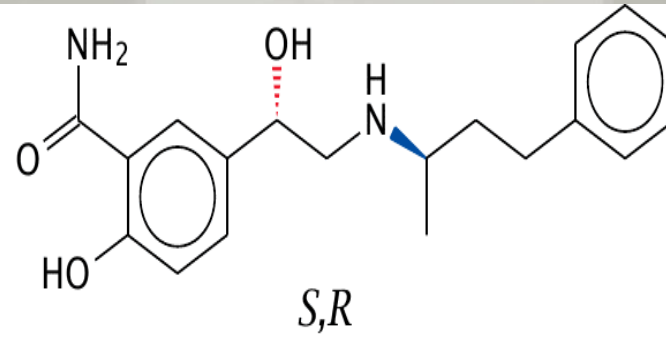
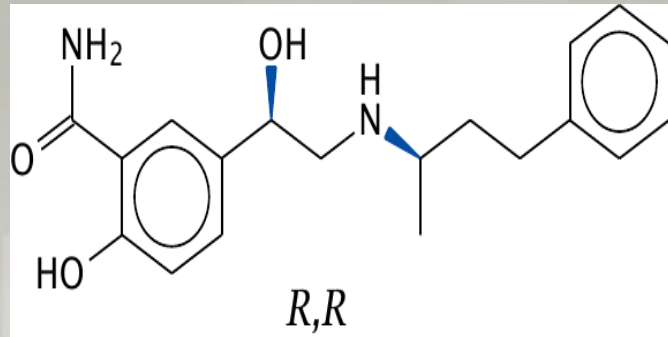
rasemik karışım kısmi agonist

**VI-** Enansiyomerler farklı reseptörler ile stereoselektif etkileşimi



**(+)-Butaklamol** güçlü  
antipsikotik

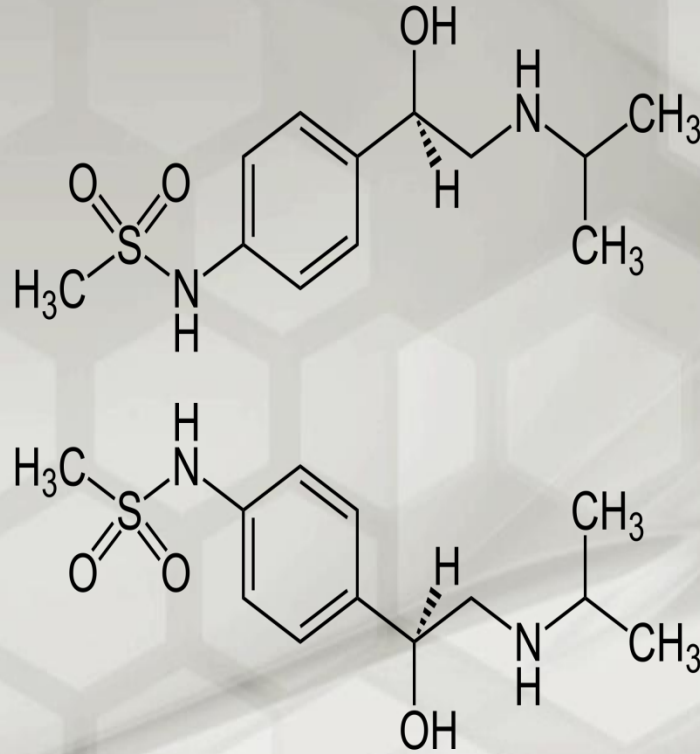
(-)-izomer inaktif



**Labetalol**  $\alpha$ - ve  $\beta$ -adrenerjik bloke edici aktivite

$R,R$ -izomer  $\beta$ -blokör  $S,R$ -izomer  $\alpha$ -blokör

$S,S$ - ve  $R,S$ -izomer inaktif



## Sotalol

iki izomer de aynı derecede antiaritmik etkili

antiaritmik amaçla  $\beta$ -adrenerjik blokör etkisi (-)-izomere göre daha zayıf olan (+)-Sotalol tercih edilir