

## HEPAR

Facies diaphragmatica  
area nuda  
sulcus venae cavae

Facies visceralis  
Fossa vesicae felleae  
Fissura lig. teretis  
Lig. teres hepatis  
porta hepatis  
impressio esophagea  
impressio gastrica  
impressio duodenalis  
impressio renalis  
Peritoneum viscerale (tunica serosa)  
Tunica fibrosa (glisson kapsülü)

Lig. triangulare dextrum et sinistrum  
Lig. falciformis  
Lig. coranarium  
Lig. hepatogastricum  
Lig. hepatoduodenale  
Lig. hepatorenale

Margo dorsalis ( margo obtusus )  
Margo ventralis ( margo acutus )  
Margo dexter,  
Margo sinister  
inc. interlobaris  
ligamentum teres hepatis  
fossa vesicae felleae  
vesicae fellea

Lobus (hepatis) dexter  
Lobus (hepatis) sinister  
Lobus supraportalis (Lobus caudatus)  
Lobus infraportalis (Lobus quadratus)

Eq. Lobus sinister lateralis et medialis  
Lobus dexter  
Lobus intermedius  
Lobus quadratus  
Lobus caudatus

Ru. Lobus ( hepatis ) dexter  
Lobus ( hepatis ) sinister  
Lobus intermedius  
lobus supra portalis ( lobus caudatus )  
proc. papillaris ( rum, car )  
proc. caudatus  
lobus infra portalis ( lobus quadratus)

Ca . Lobus sinister lateralis et medialis  
Lobus dexter lateralis et medialis  
Lobus intermedius  
Lobus quadratus  
Lobus caudatus  
proc. caudatus  
proc. papillaris ( rum, car)

Su. Lobus sinister lateralis et medialis  
Lobus dexter lateralis et medialis  
Lobus intermedius  
Lobus quadratus  
Lobus caudatus  
proc. caudatus

**Vesica biliaris [Vesica fellea]**

Fundus vesicae felleae

Corpus vesicae felleae

Collum vesicae felleae

Ductus cysticus

Ductuli biliferi

Ductus hepaticus communis

Ductus hepaticus dexter

Ductus hepaticus sinister

Ductus cysticus

Ductus choledochus

Ductus hepatocystici ( ru. )

## Pancreas

Lobus pancreatis dexter

Processus uncinatus (ru.)

Corpus pancreatis

Lobus pancreatis sinister

Incisura pancreatis (ca., ru)

Anulus pancreatis (su., eq.)

Ductus pancreaticus

Ductus pancreaticus accessorius

Endoexocrin

Endocrin: Insulin – Glukagon-Somatostatin

Exocrin : Pancreas salgısı protein, yağ,  
karbonhidratları parçalayan enzimler içerir

## Lien [splen]

Sindirim Sistemine ait olmayan lien sindirim sistemi organları ile yakın topografik ilişkisini nedeniyle bu bölümde de incelenecektir.

Facies parietalis (diaphragmatica)

Facies visceralis

Margo cranialis et caudalis

Hilus lienis

Extremitas dorsalis

Extremitas ventralis

Lig. phrenicolienale

Lig. renolienale

Lig. gastrolienale

## MEMELİLERDE BÜYÜK VÜCUT BOŞLUKLARI

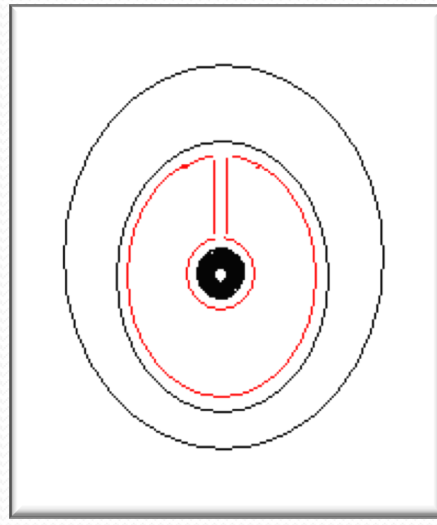
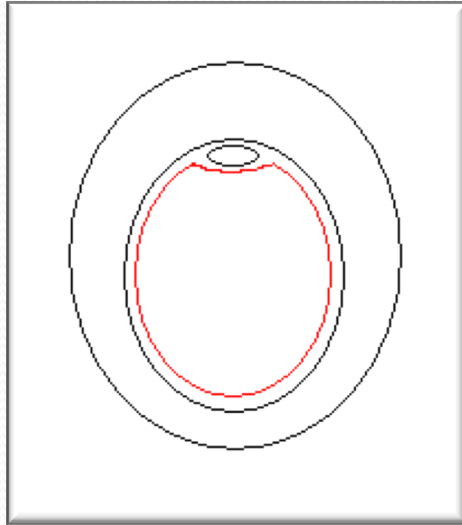
**Cavum pectoris**

**Diaphragma**

**Cavum abdominis**

**Linea terminalis**

**Cavum pelvis**



**Pleura-Periton**

**Lamina parietalis**

**Lamina visceralis**

**Lamina intermedia**

## CAVUM ABDOMINIS

Sagittal ap - ventralde en uzun

Transversal ap - son 2-3 costa arasında en uzun

Vertical ap - 1.bel omuru dzeyinde en uzun

- *Foramen venae cavae caudalis*

v. cava caudalis

- *Hiatus aorticus*

aorta

duct. thoracicus

v. azygos

- *Hiatus esophageus*

esophagus

n. vagus' ların trunc.esophageus dorsalis et ventralis'i

-Anulus inguinalis abdominalis – Canalis inguinalis

-Periton bořluęu diřilerde reme kanalı ile dıř ortamla iliřkilidir.Diři ayı bu kuralın dıřındadır.

-Fetus'da umblicus karın bořluęundaki deliklerden biridir.

## **PERITONEUM**

Lamina parietalis

Lamina visceralis

Lamina intermedia ( mesenteria, omentum vb.)

Mesoduodenum

Mesenterium

Radix mesenterii

Mesojejunum

Mesoileum

Mesocolon

Mesocolon ascendens

Mesocolon transversum

Mesocolon descendens

Mesocolon sigmoideum

Meso rectum

## **Omenta**

*Omentum minus*

lig.hepatoduodenale

lig.hepatogastricum

*Omentum majus [Epiploön]*

paries superficialis

paries profundus

bursa omentalis

aditus ad bursam omentalem

vestibulum bursae omentalis

foramen epiploicum

## CAVUM PELVIS ve PERITON

Rectum

Plica genitalis

Vesica urinaria

Meso rectum

Lig. vesicae laterale

Lig. vesicae medianum

Periton eq.'de 3.-4. sacral omur,  
rum.'da 1., ca.'da 2. caudal omura kadar  
olan bölgede pelvis boşluğunu sarar.

Spatium retroperitoneale

Excavatio pararectalis

Fossa para rectalis

Excavatio rectogenitalis

Excavatio vesicogenitalis

Excavatio pubovesicalis



## CAVUM PECTORIS ve PLEURA

### Pleura

Cavum pleurae

Cupula pleurae

Pleura pulmonalis

Pleura parietalis

    Pleura costalis

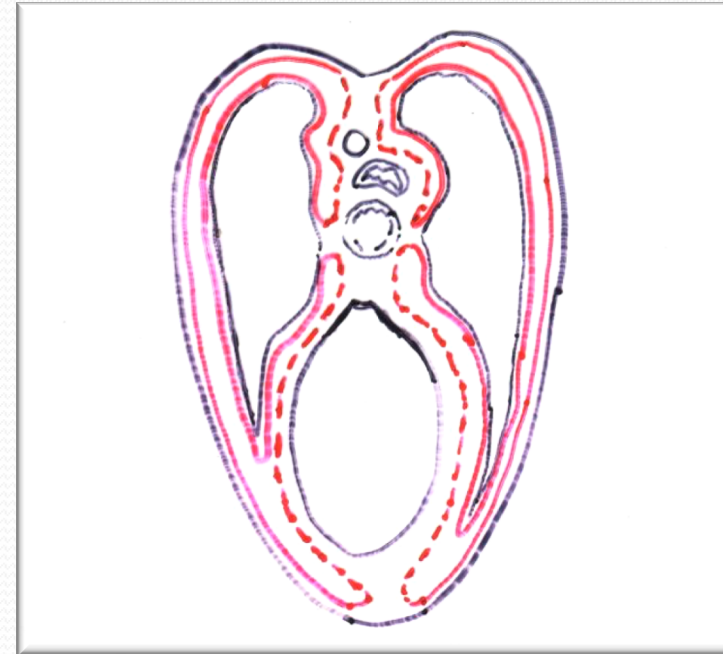
    Pleura diaphragmatica

    Pleura mediastinalis

        Pleura cardiaca

        lig. pulmonale

Recessus pleurales



### Mediastinum

- \* Mediastinum craniale ( precardial mediastinum)
  - \* Mediastinum medium ( cardial mediastinum )
  - \* Mediastinum caudale ( postcardial mediastinum)
- Fenestra mediastini (ca.,eq.)