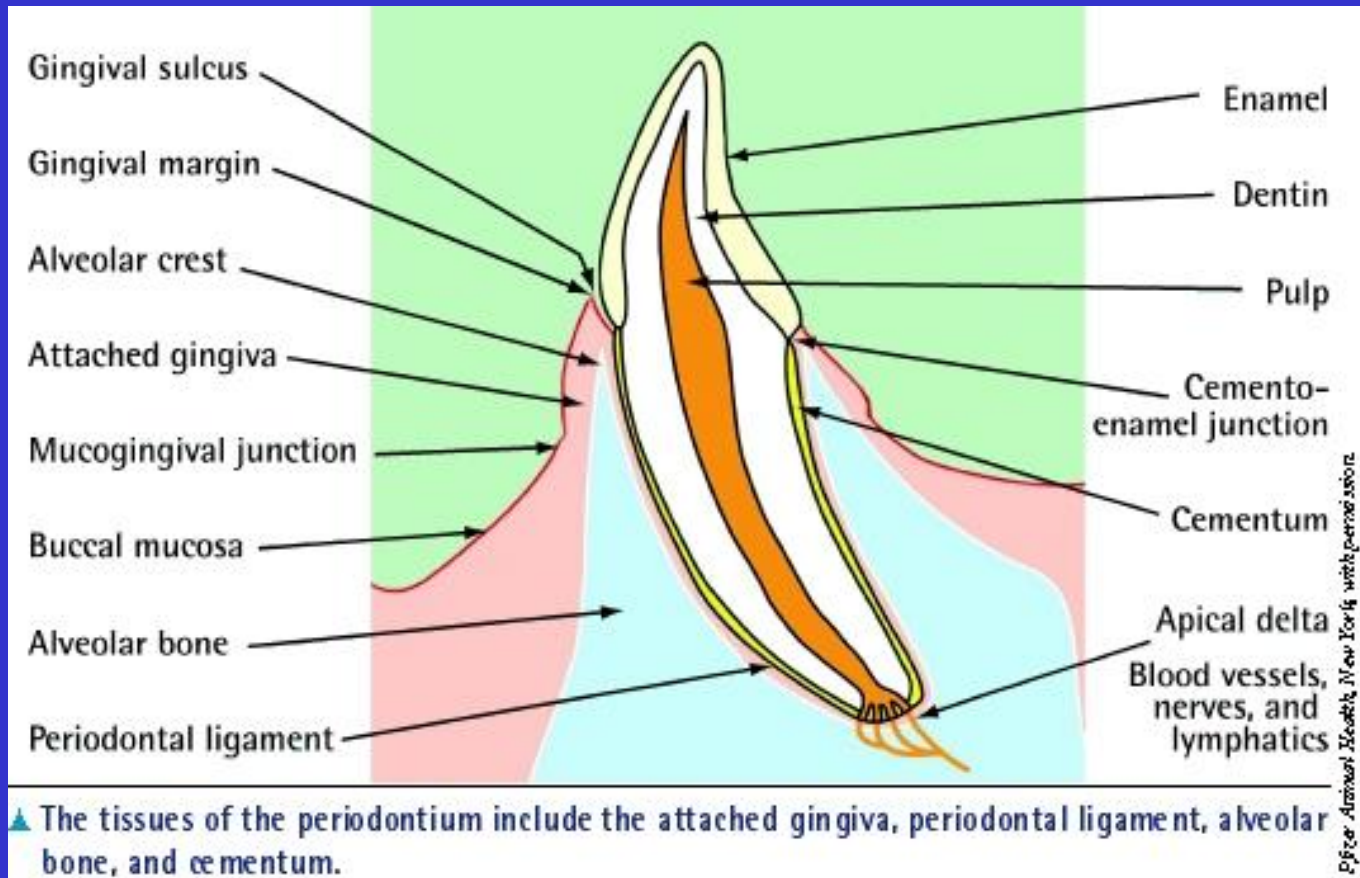


# PERIODONTITIS



## Diş Destek Veren Yapılar

Gingiva

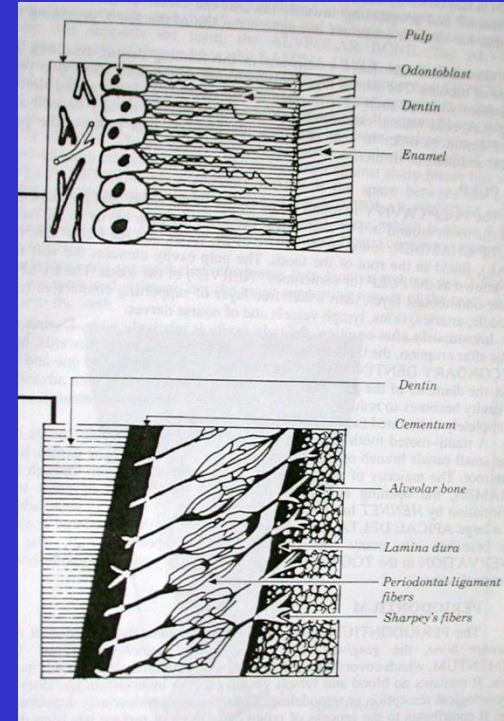
Periodontal ligament

Sement

Alveolar Kemik

Epitelial birleşim

Periodontal cep oluşumu + kemik rezorpsiyonu  
+Periodontal ligamentin Yangısı



# Nedenler

## Predispoze Nedenler:

Brachisefalik Irk

Süt diřleri

Fırçalamama

Mine Hasarı

Malokluzyon

Travma

Ağızdan solunum

# Yapıcı Nedenler

## Dental Plak

Polisakkarit: (Dextran Mutan, glukon Fruktan ) +  
Glikoproteinler +Epitel + Lökosit + Su + İnorganik  
Madde

Sup – subragingival birikir

Kalkulus – Mineralize plak

Kalsiyum karbonat, kalsiyum fosfat

Köpeklerde periodontopatiler daha yaygındır: Tükürükte üre miktarı yüksektir, pH alkali – proteolizis, Ca tuzları presipite olur,

<b>Aerop Bakteriler</b>	<b>Olgu Sayısı</b>	<b>Anaerob Bakteriler</b>	<b>Olgu Sayısı</b>
<b>Neisseria sp</b>	<b>28</b>	<b>Bakteroides sp</b>	<b>8</b>
<b><math>\alpha</math> Hem. Strept.</b>	<b>5</b>	<b>Porfiromonaz sp</b>	<b>6</b>
<b>S. Epidermidis</b>	<b>18</b>	<b>G (-) basil</b>	<b>5</b>
<b>N. Hem. Strept</b>	<b>6</b>	<b>G (-) kok</b>	<b>5</b>
<b>Koliform</b>	<b>1</b>	<b>G (+) basil</b>	<b>1</b>
<b>S. aureus</b>	<b>5</b>	<b>Aktinomiçes sp</b>	<b>1</b>
<b>E. koli</b>	<b>6</b>	<b>Fusobakterium sp</b>	<b>2</b>
<b>P. aeroginoza</b>	<b>1</b>	<b>Laktobasil sp</b>	<b>1</b>
<b>Enterobacter sp</b>	<b>1</b>	<b>Bact. fragilis</b>	<b>4</b>
<b>G (-) Kokobasil</b>	<b>1</b>	<b>Veillonella sp</b>	<b>1</b>
<b>Proteus sp</b>	<b>1</b>	<b>G (+) kok</b>	<b>1</b>

Gingival sulkus derinliđi

Köpek 4 mm <

Kedi 0.5 – 1 mm

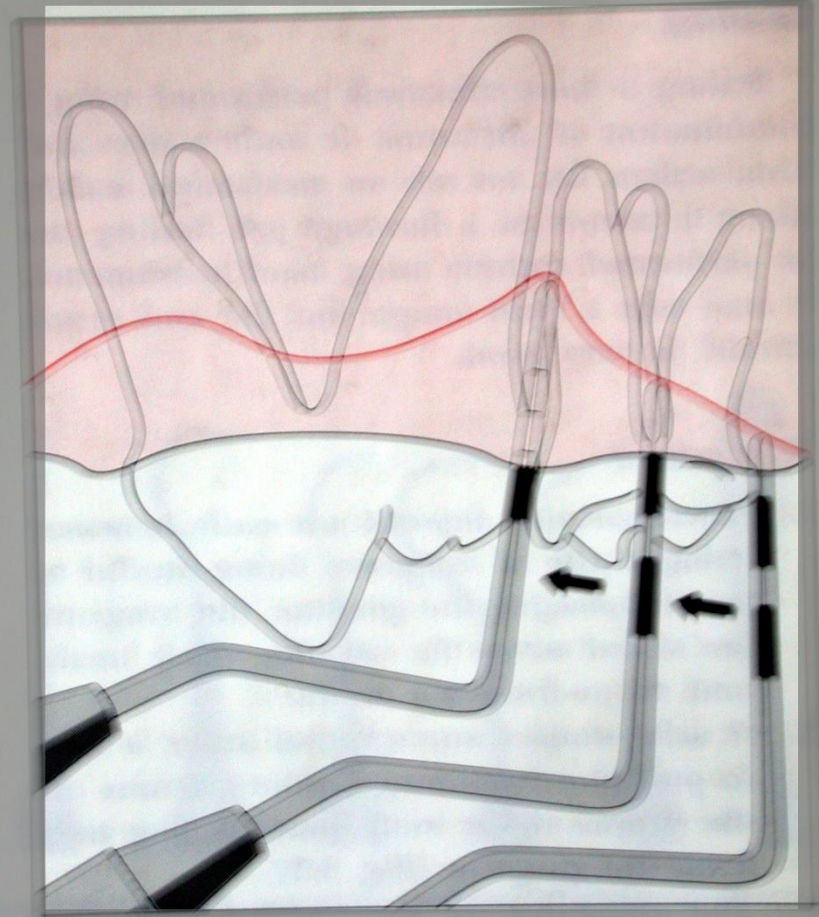


Fig. 5.7 Using the graduated periodontal probe to measure probe depth around the upper first molar and the upper fourth premolar.