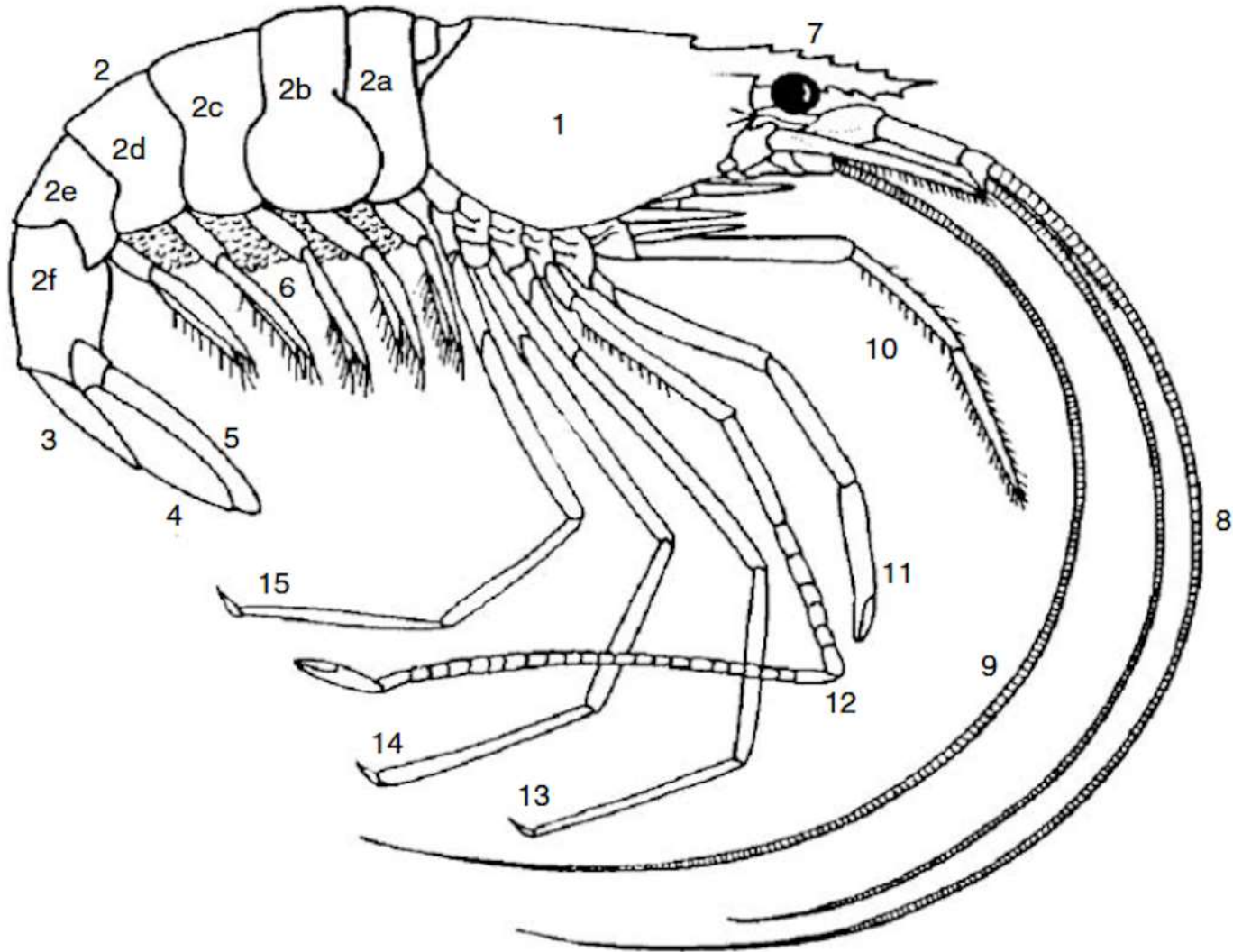
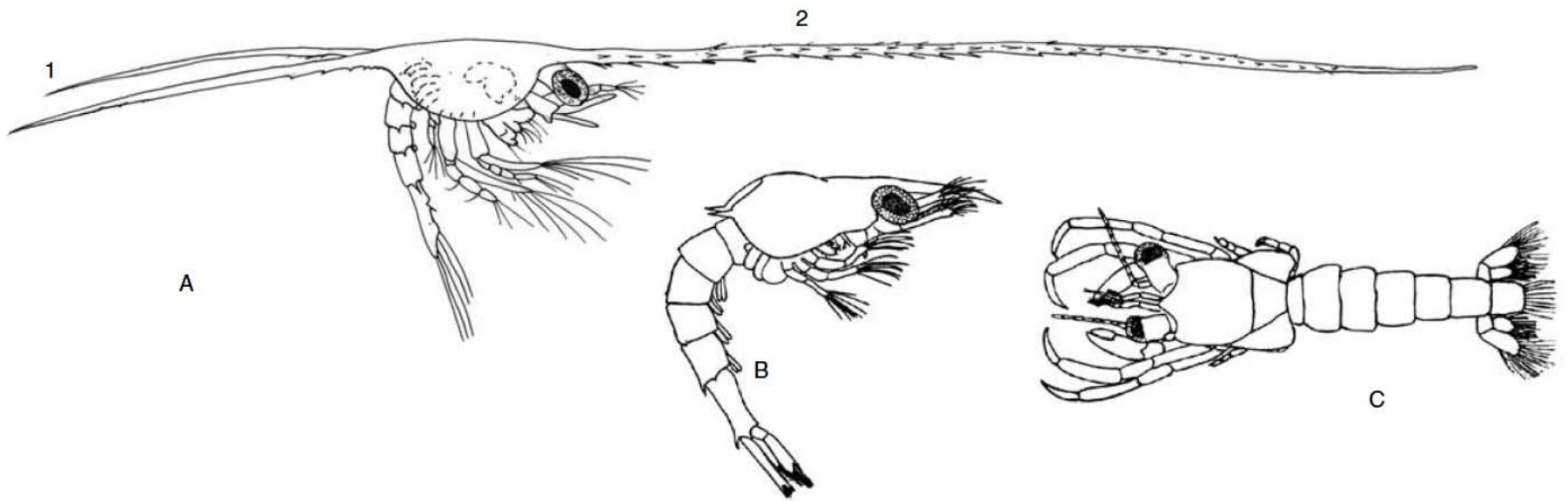


Crustacean and Culture Techniques

- Prof. Dr. Hasan Hüseyin ATAR

Biological properties of Shrimp



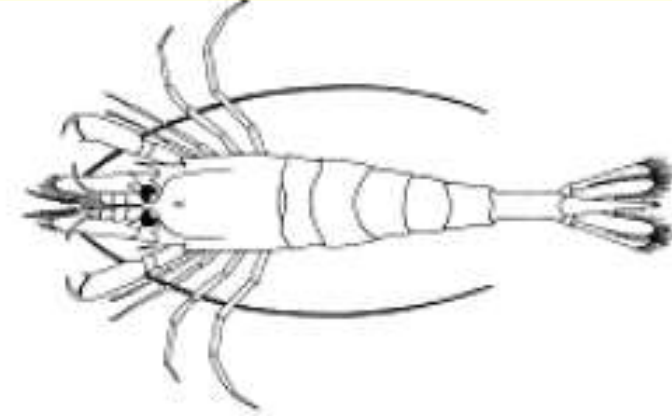


- SYSTEMATICS, *Penaeus*
- **Phylum** : Arthropoda
- **Class** : Crustacea
- **Series** : Eumalacostraca
- **Superorder** : Eucarida
- **Order** : Decapoda
- **Suborder** : Natantia
- **Infraorder** : Penaeidea
- **Superfamily** : Penaeoidea
- **Family** : Penaeidae
- **Genus** : *Penaeus*
- **Subgenus** : *Penaeus*
- **Species** : *semisulcatus*
- **Athority** : De Haan, 1844

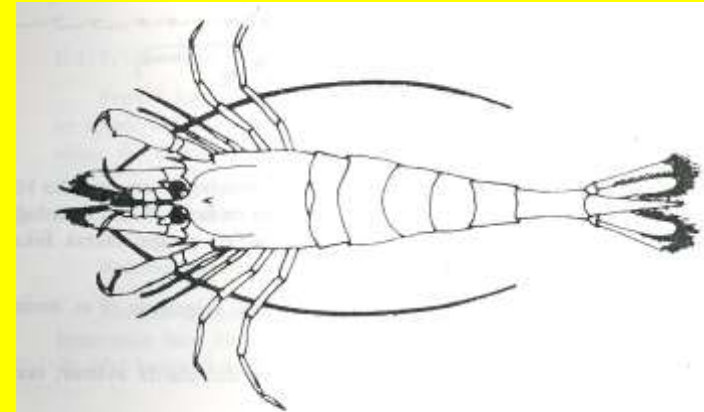
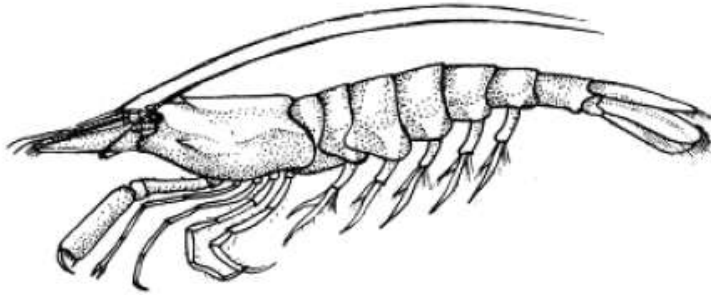
Tablo1. Türkiye sularında ekonomik olarak avcılığı yapılan karides türlerinin boy, av derinliği ve yayılış alanları.

T ü r ü n a d ı	Boy (cm) azami ortalama		Av derinliği (m)	Yayılışı
<i>P. longirostris</i>	15	9-11	20- 100	Marmara denizi Saros körfezi Edremit körfezi Çandarlı körfezi Sığacık körfezi Finike körfezi Taşucu körfezi Mersin körfezi İskenderun körfezi
<i>M. monoceros</i>	18	12-14	6-60	Finike körfezi İskenderun körfezi
<i>P. japonicus</i>	30	20-22	20-30	Antalya körfezi Mersin körfezi İskenderun körfezi
<i>P. semisulcatus</i>	30	20-22	25-50	Mersin körfezi İskenderun körfezi Taşucu körfezi
<i>P. kerathrurus</i>	20	12-15	10-40	Akdeniz Ege Marmara

Crangon crangon (L., 1758)



C. crangon Dorsalden görünüş



Şekil 4: Çali Karidesi Anonim 1973.



HHA



