

TIP ALETLERİ



KLA 222

Yüksek Buluntu

Hekimlerin kullandığı aletlerin yapımı, bu konuda uzmanlaşmış atölyelerde gerçekleştirilirdi.

Aletler genelde bronzdan yapılırdı.

Önemli atölyeler aletlerin üzerine adlarını kazırlardı. Agathangelos bu atölyelerden biridir.



KLA 222

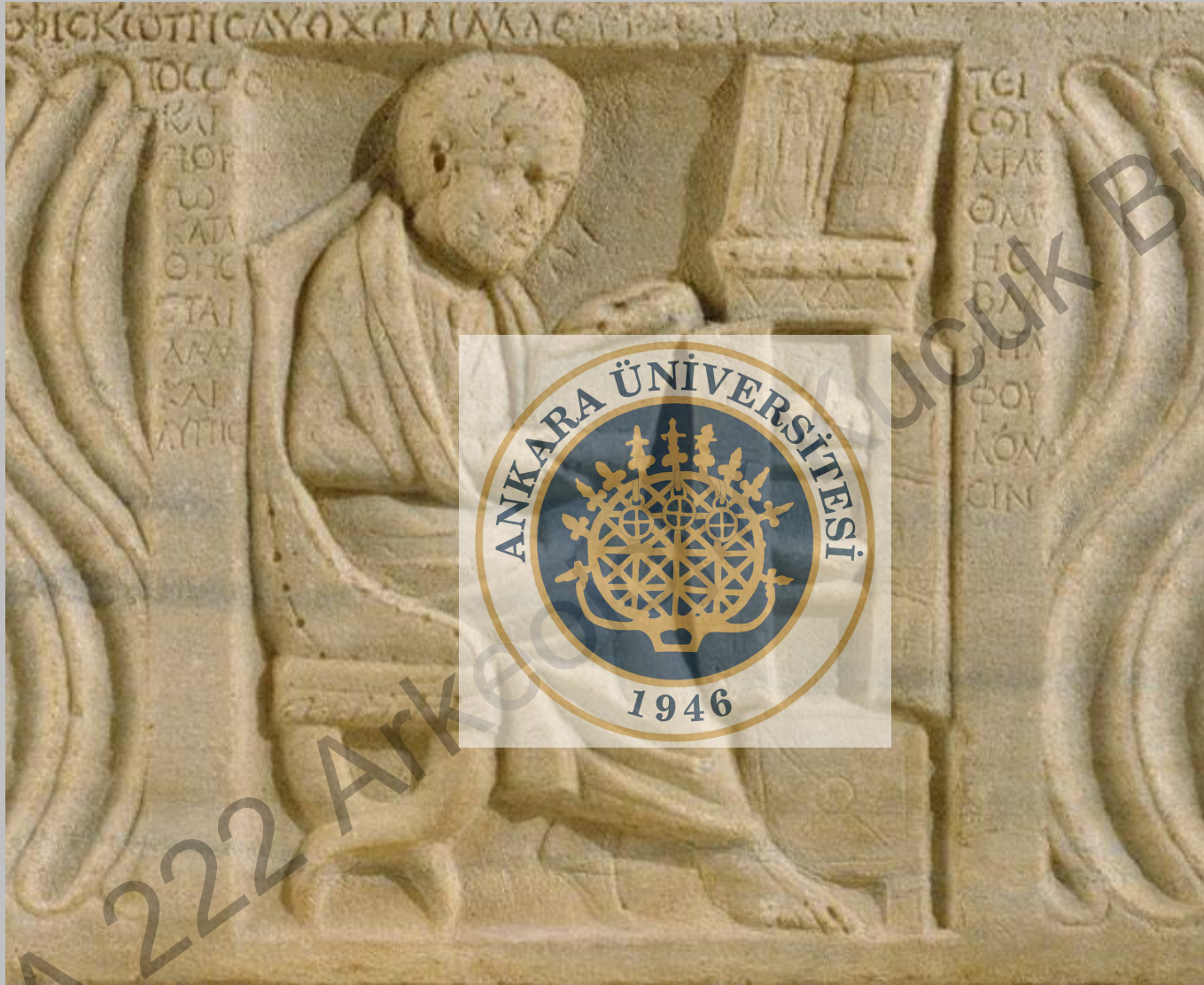


Doktora ait mezar buluntuları

KLA 222 Arkeolojik Buluntu



Herculaneum, Italya



Doktor lahiti, Roma, Ostia



102105487

Attica, Oropos, Temple of Amphiaraus, Votive marble relief depicting Amphiaraus healing Archinus' shoulder

500 BC-AD 400 Roman medicine



Pens

Kan kabı

ilaç ısıtma kepçesi

Ayırıcı, geri çekici

Neşter

Doku sökücü
kanca

Neşter sapı

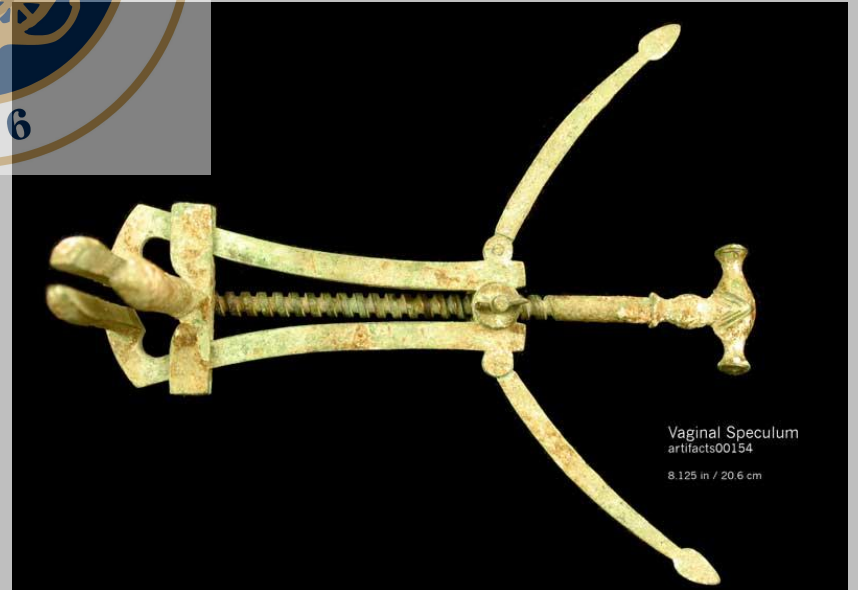
Medical instruments from the Roman Empire show that Roman doctors had many surgical skills. However, the Romans' major contribution to medicine was in public health – good plumbing kept Romans healthy!



KLA 222



Uterine Forceps
A. artifacts00171
4 in / 10.2 cm
B. artifacts00184
5 in / 12.7 cm
C. artifacts00159
4.125 in / 10.5 cm





Spatula Probes

- | | |
|--|---|
| A. artifacts00208
10.125 in / 25.7 cm | D. artifacts00190
6.625 in / 16.8 cm |
| B. artifacts00189
6.875 in / 17.5 cm | E. artifacts00191
6.25 in / 15.9 cm |
| C. artifacts00193
6.75 in / 17.1 cm | F. artifacts00192
5.75 in / 14.6 cm |



Epilation Forceps

- | | |
|---|--|
| A. artifacts00179
5.75 in / 14.6 cm | D. artifacts00186
3.75 in / 9.5 cm |
| B. artifacts00122
5.75 in / 14.6 cm | E. artifacts00181
3.25 in / 8.25 cm |
| C. artifacts00114
5.875 in / 14.9 cm | F. artifacts00181
3.25 in / 8.25 cm |



KLAZ...

Buluntu





Surgical and cosmetic instruments:
Diocles' scraper at top right, Invented by
School of Medicine of Ephesus, Artifacts
uncovered in Ephesus, Turkey, Roman
Civilization, 2nd century



KLA 222 Arkeoloji

Acuk Buluntu



Roman civilization, terracotta funeral stone depicting act of blood-letting, surgical instruments, from cemetery on Isola Sacra, Ostia, Italy. Italy, Rome, Museo Della Civiltà Romana, Museum of Ancient Rome.