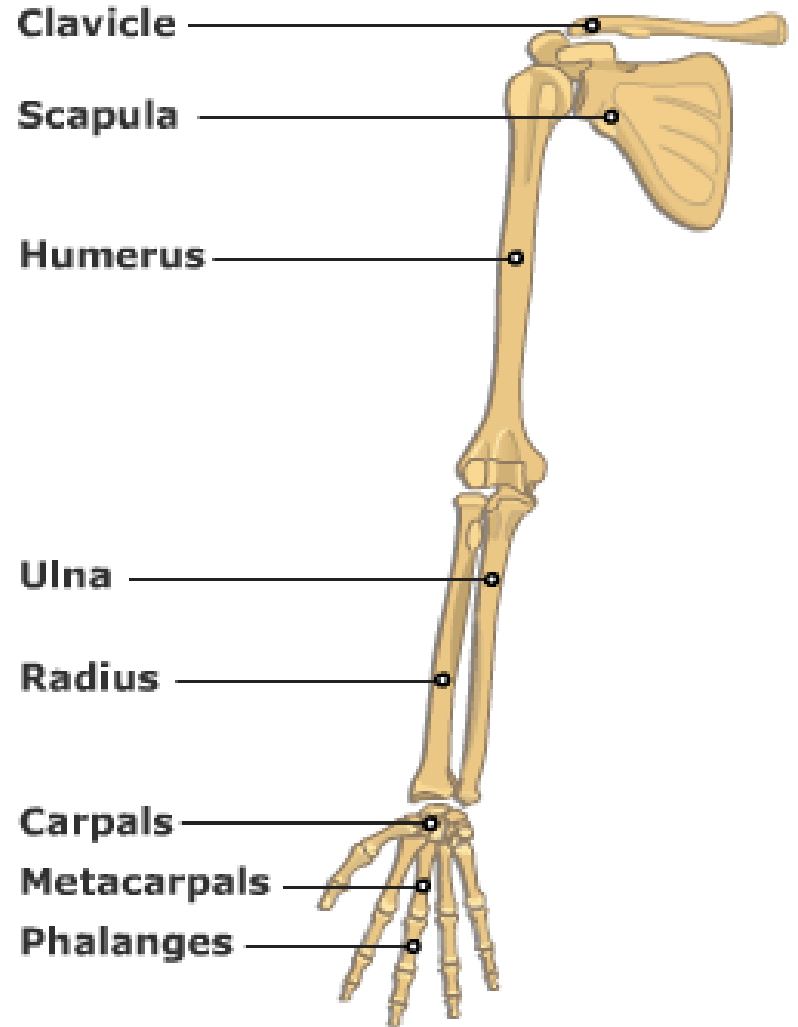


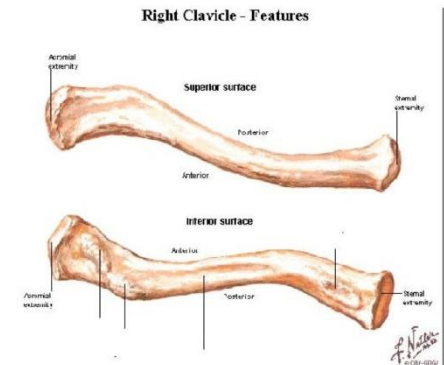
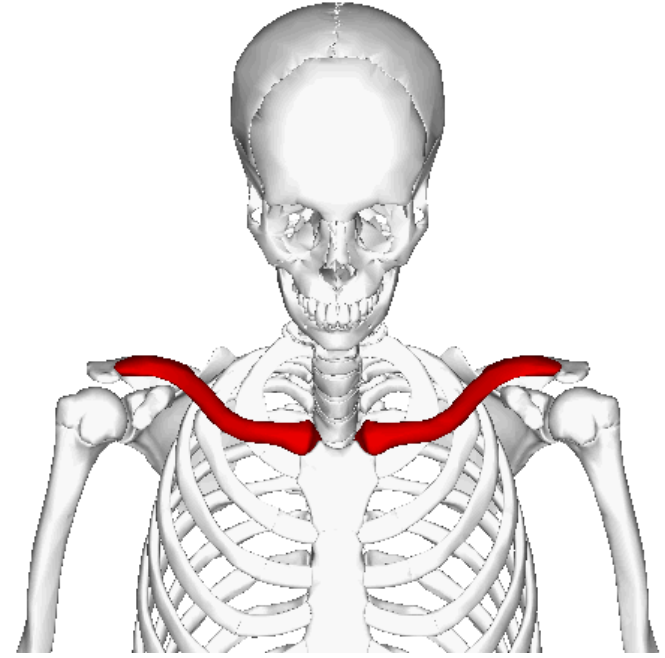
# ÜST EKSTREMİTE KEMİKLERİ

- Omuz Bölgesi
  - Clavicula
  - Scapula
- Kol Bölgesi
  - Humerus
- Önkol Bölgesi
  - Radius
  - Ulna
- El Bölgesi
  - Ossa Carpi
  - Ossa Metacarpi
  - Ossa Digitorum



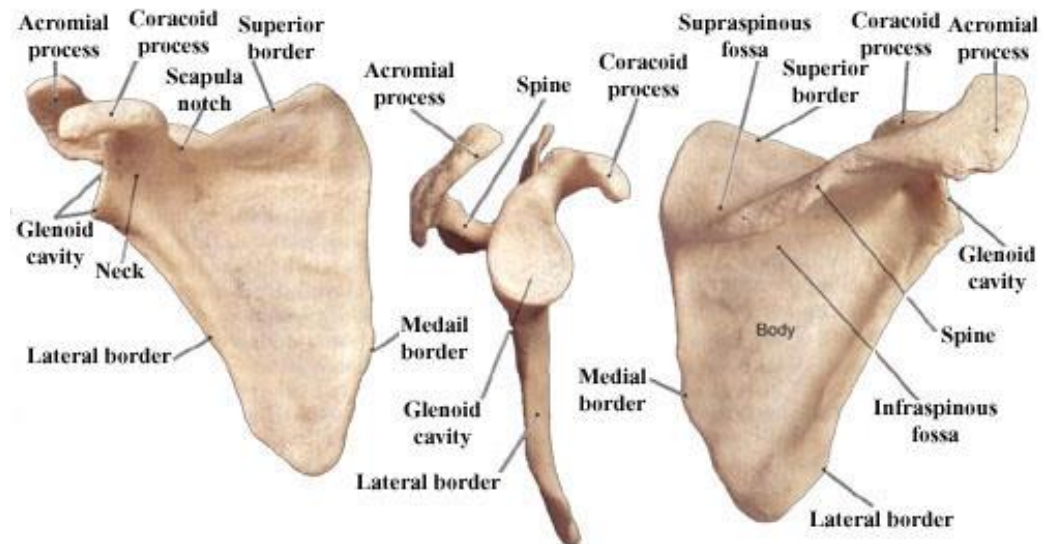
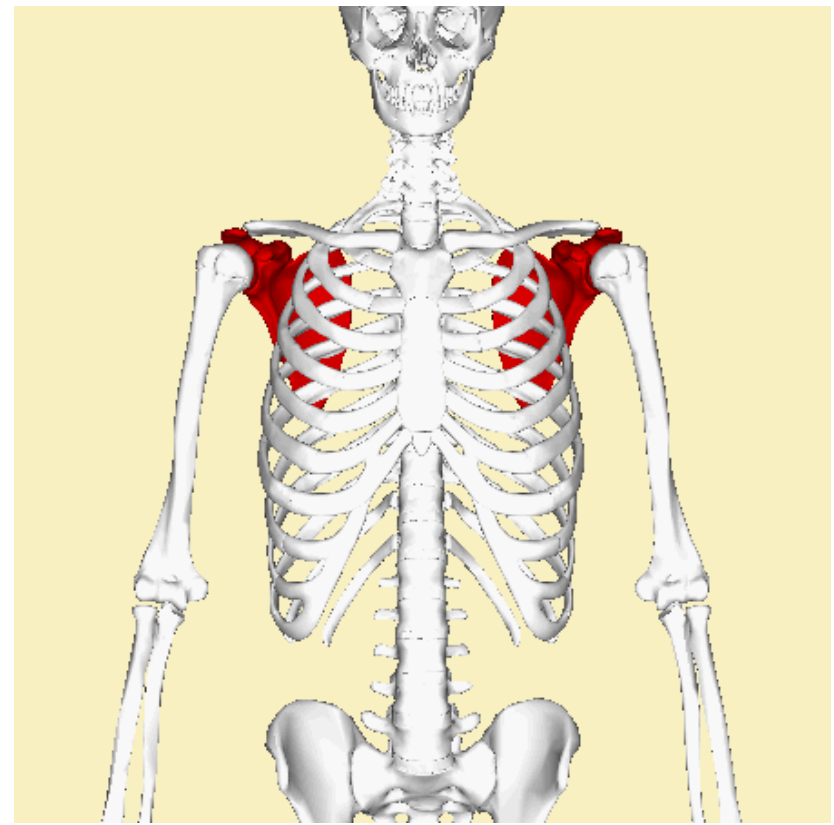
# Clavicula

- Sternum ve scapula ile eklem yapan S şeklinde bir kemiktir.



# Scapula

- 2-7 costae
- Spina scapula
- Acromion
- Processus Coracoideus

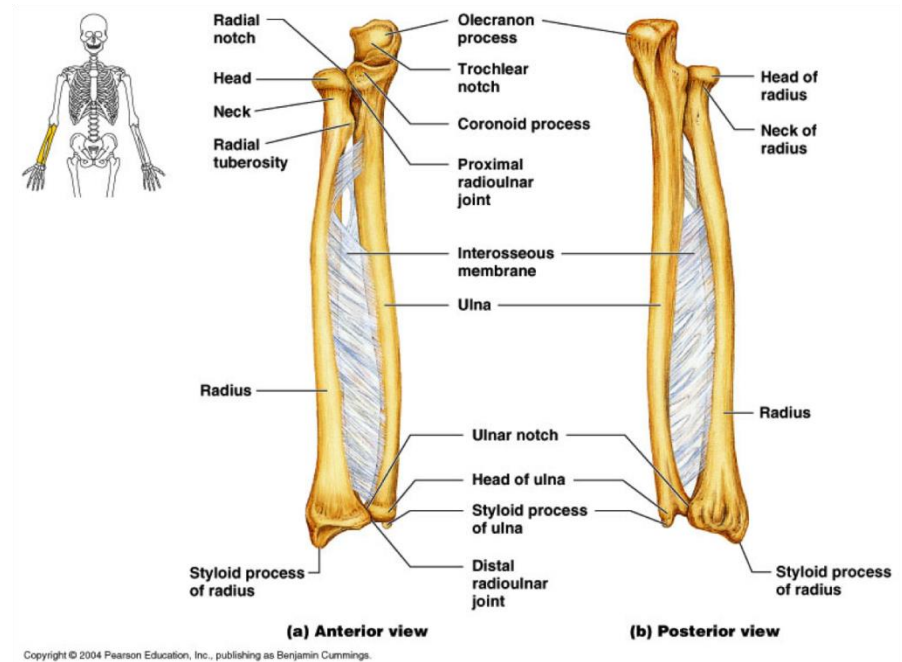


# Humerus

- Üst ekstremitenin en uzun kemiği
- Ekstremitas proximalis
  - Caput humeri
  - Tuberculum majus
  - Tuberculum minus
- Corpus
- Ekstremitas distalis
  - Trochlea humeri
  - Epicondylus medialis
  - Epicondylus lateralis

# Radius – Ulna

- Olecranon
- Processus styloideus radii
- Processus styloideus

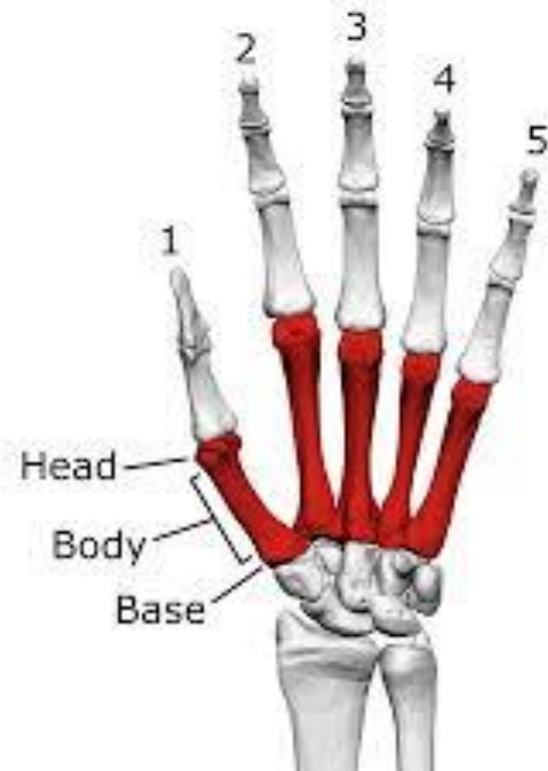


# Ossa Carpi

- Distalde
  - Os Hamatum
  - Os Capitatum
  - Os Trapezoideum
  - Os Trapezium
- Proksimalde
  - Os Pisiforme
  - Os Triquetrum
  - Os Lunatum
  - Os Schaphoideum

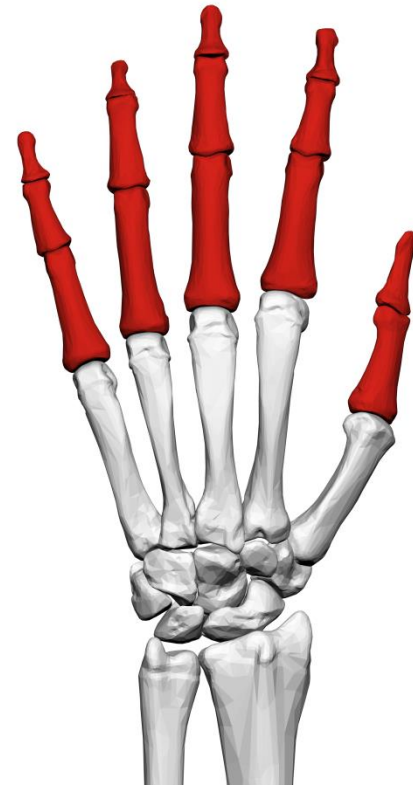


# Ossa Metacarpi



# Ossa Digitorum(Phalanges)

- 14 Tane
- 1.Parmak
  - Phalanx Proximalis
  - Phalanx Distalis
- 2-3-4-5 Parmaklar
  - Phalanx Proximalis
  - Phalanx Media
  - Phalanx Distalis





# ALT EKSTREMİTE KEMİKLERİ

- Kalça Bölgesi
  - Os Coxae(Pelvicum)
    - Os ilii(Ilium)
    - Os ischii(Ischium)
    - Os pubis(Pubis)
- Uyluk Bölgesi
  - Femur
  - Patella
- Bacak bölgesi
  - Tibia
  - Fibula
- Ayak Bölgesi
  - Ossa Tarsi
    - Talus
    - Calcaneus
    - Os naviculare
    - Os cuboideum
    - Os cuneiforme mediale-intermedium-laterale
  - Ossa Metatarsi
  - Ossa Digitorum(Phalanges Pedis)



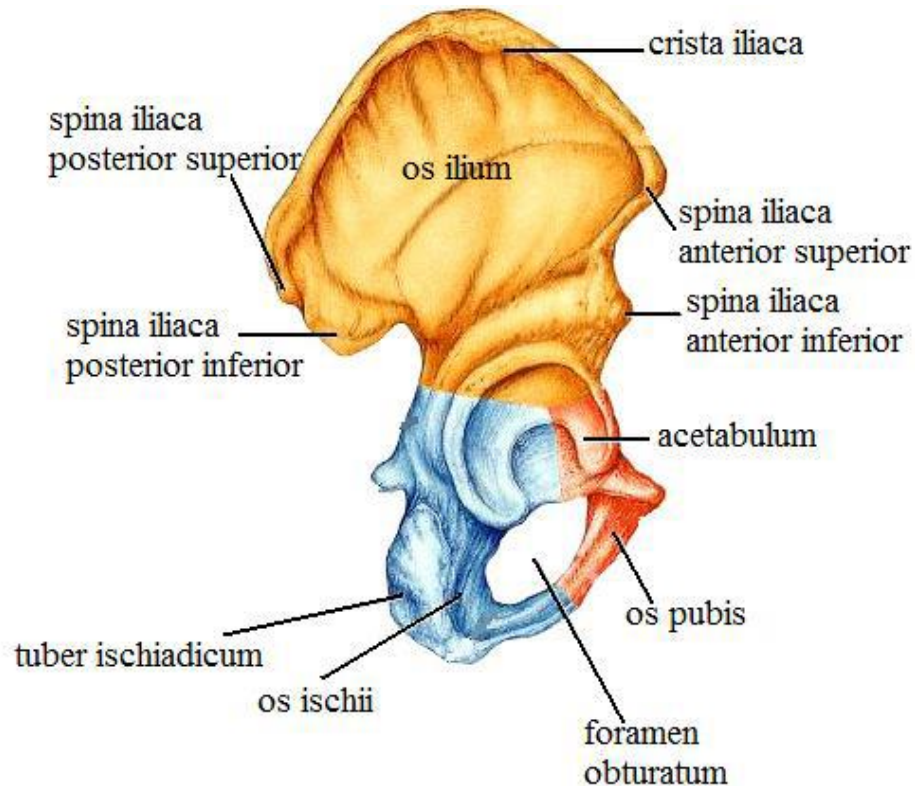
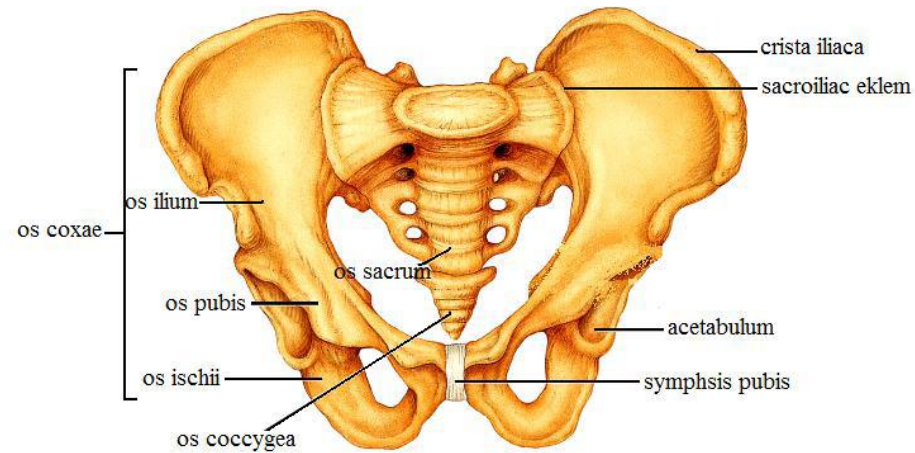
# Os Coxae(Pelvicum)

- Os ilii(Ilium)
  - spina ilica anterior superior
  - spina ilica anterior inferior
  - spina iliaca posterior superior
  - spina iliaca posterior inferior
- Os ischii(Ischium)
  - tuber ischiadicum
- Os pubis(Pubis)
  - symphysis pubica

Acatabulum

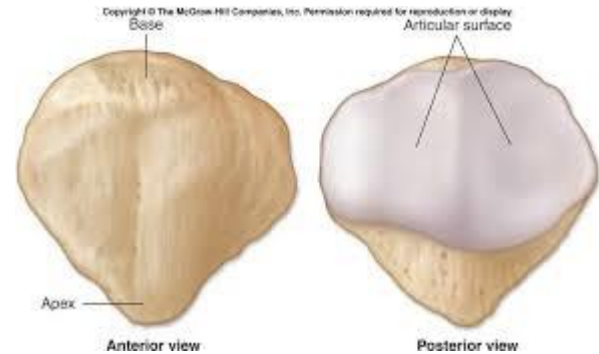
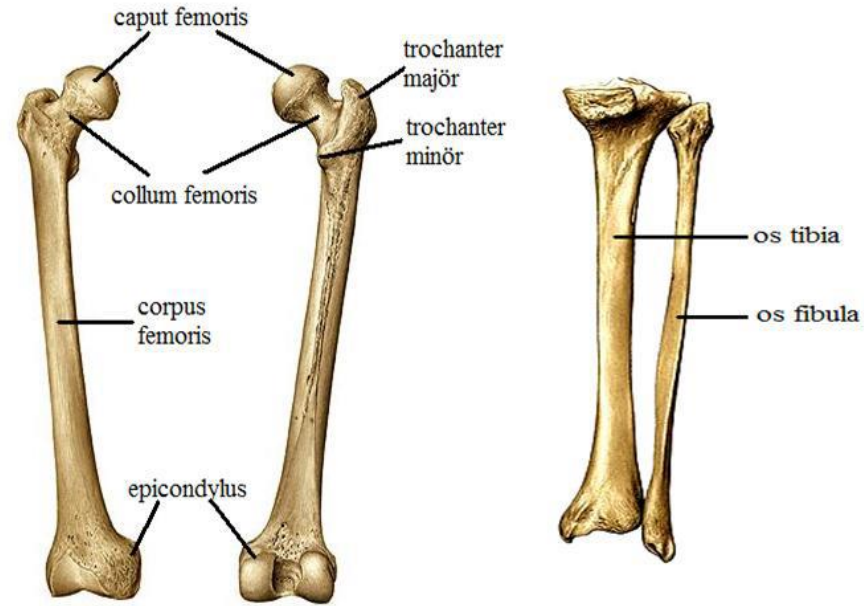
Foramen Obturatum

Articulatio Coxae



# Femur – Patella

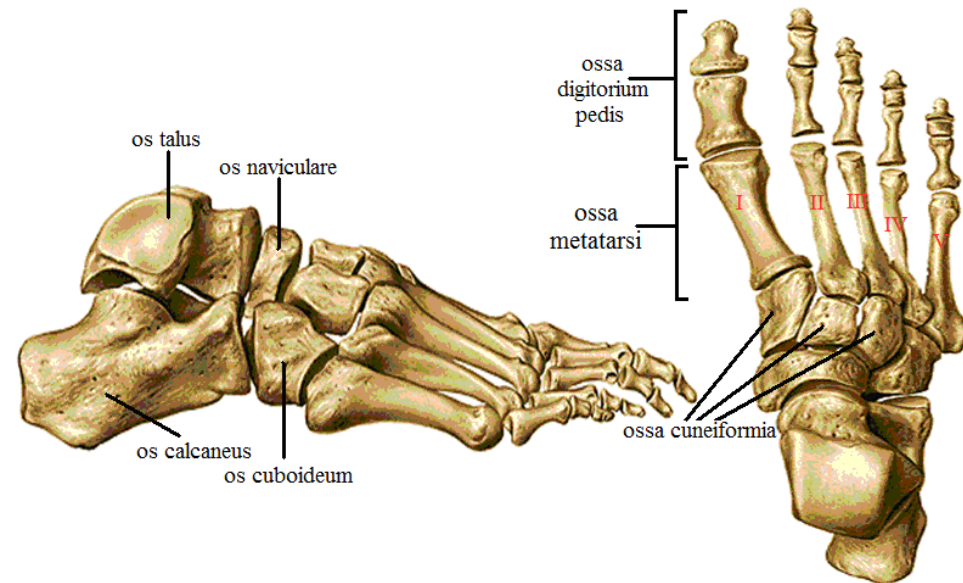
- Vücutun en uzun kemiğidir.
- Vücut uzunluğunun 1/4'ü kadardır.
- Extremitas Proximalis
- Corpus Femoris
- Extremitas Distalis



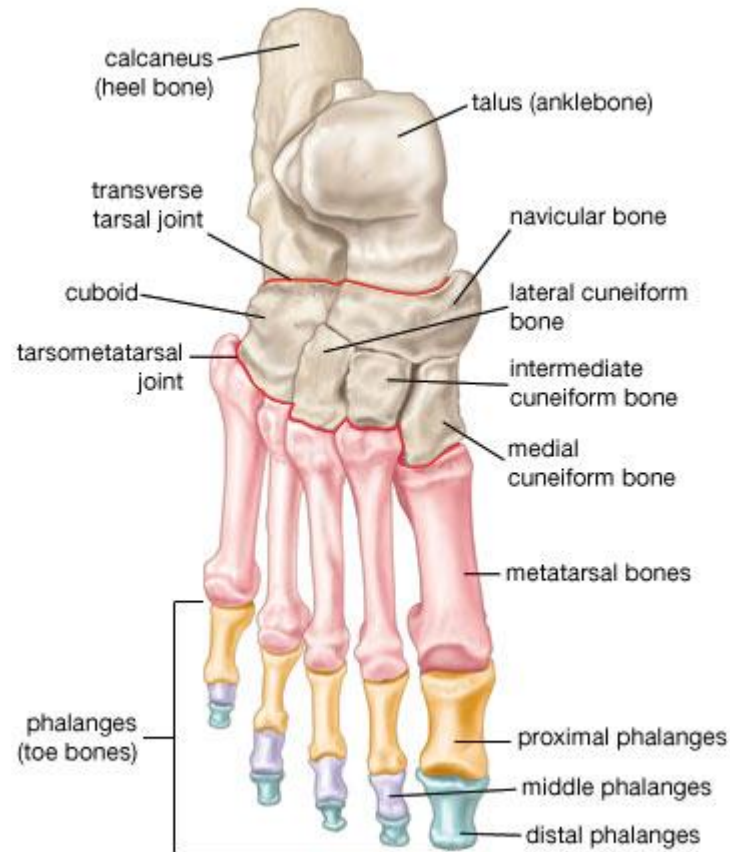
- **Os Tibia**
  - tuberositas tibia
- **Os Fibula**
  - caput fibula

# Ossa Tarsi

- 7 adet kemik bulunur.
- Proksimal sıra
  - Talus
  - Calcaneus
  - Os naviculare
- Distal sıra
  - Os cuneiforme mediale
  - Os cuneiforme intermedium
  - Os cuneiforme laterale
  - Os cuboideum



# Ossa Metatarsi – Ossa Digitorum (Phalanges Pedis)



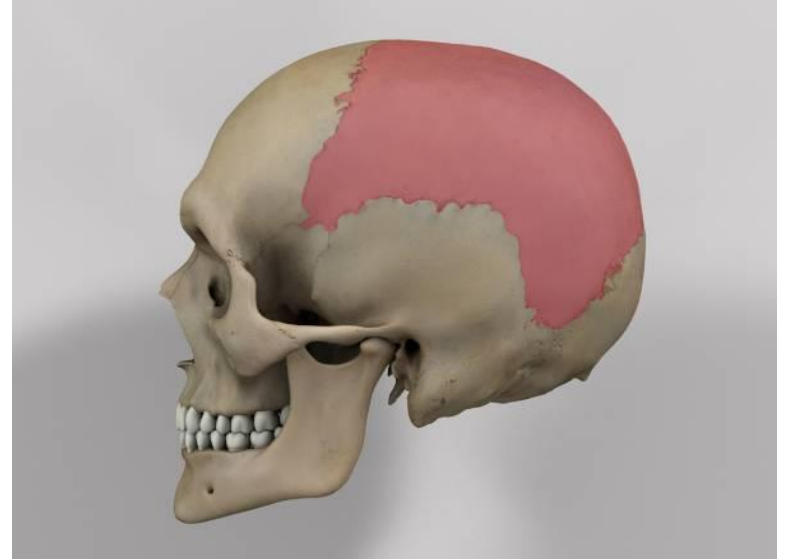
# Os Frontale

- Kafatasının antero-superiorunda.



# Os Parietale

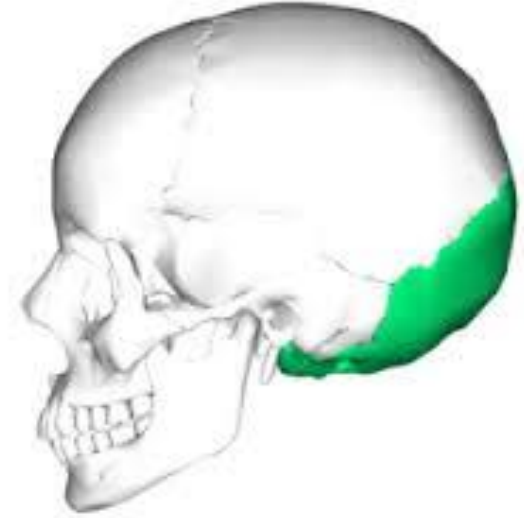
- Kafatasının üst orta kısmında yer alan çift kemiktir.





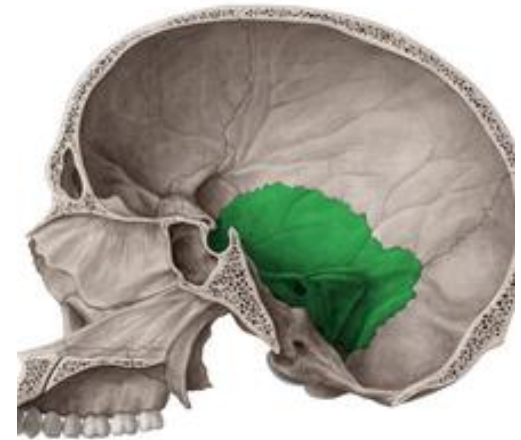
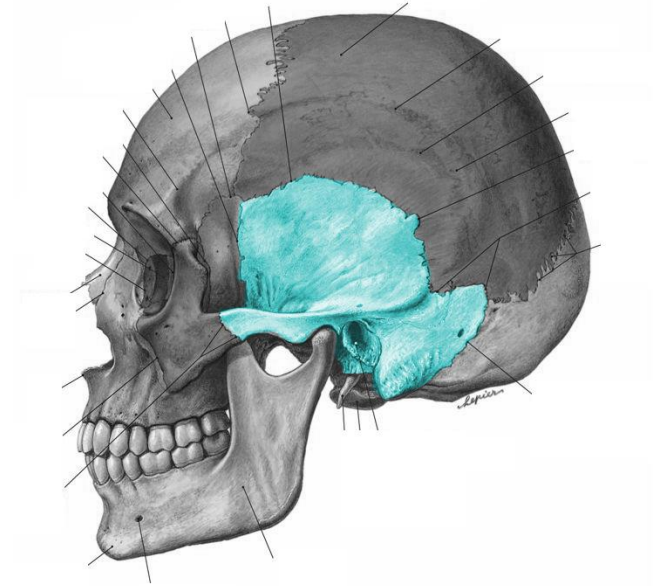
# Os Occipitale

- Kafatasının arka alt bölümünü oluşturan tek kemiktir.



# Os Temporale

- Kafatası tabanının ve yan alt duvarının yapısına katılan çift kemiktir.

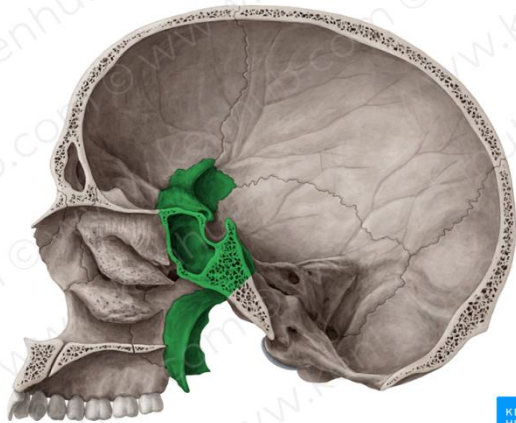


# Os Sphenoidale



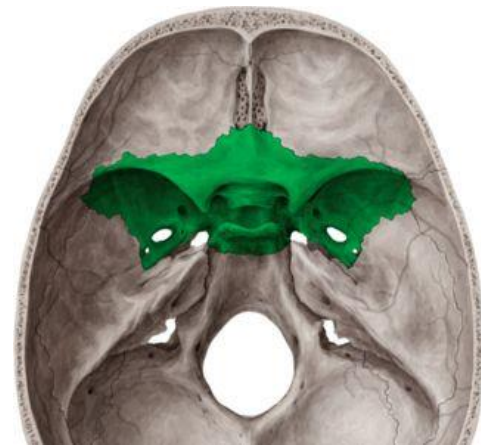
© www.kenhub.com

KEN  
HUB

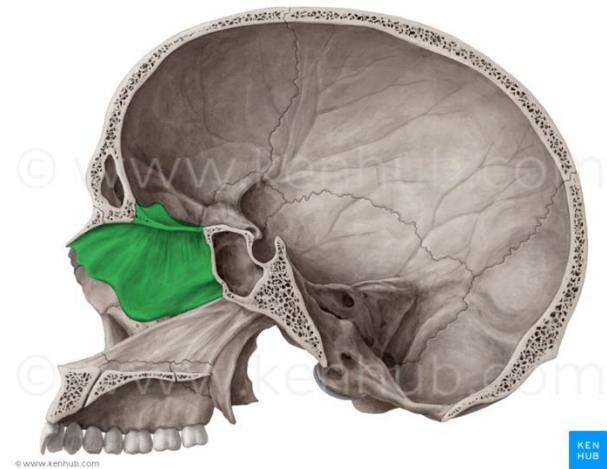


© www.kenhub.com

KEN  
HUB



# Os Ethmoidale



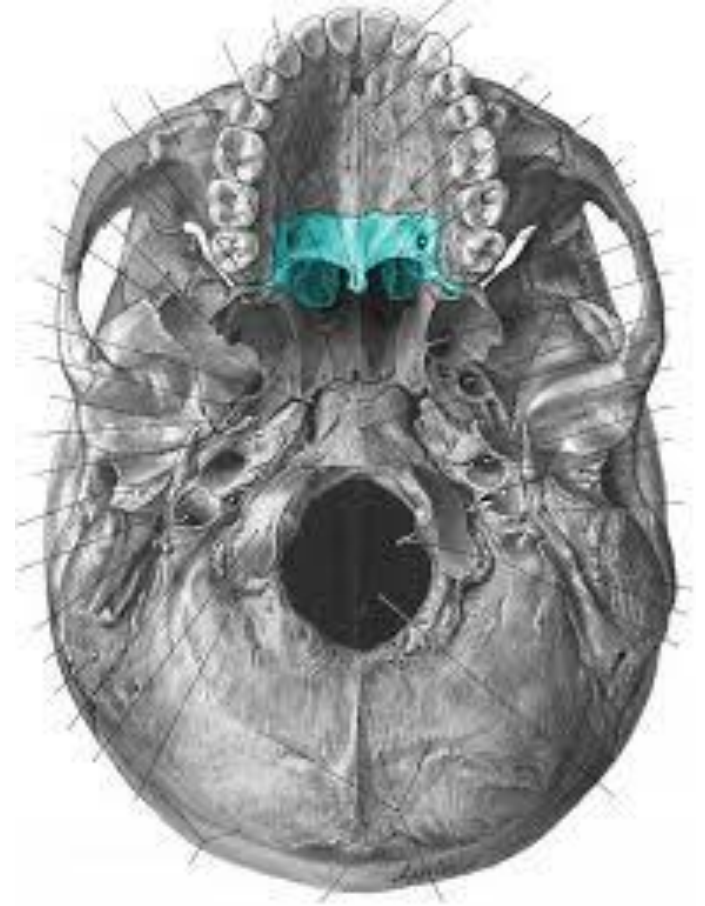
# Maxilla

- Maxilla, ağız boşluğunun tavanı, orbita tabanı, burun boşluğunun tabanı ve dış yan duvarını yapar.
- Maksilla sert damağın 2/3 ön bölümünü oluşturan çift kemiktir.



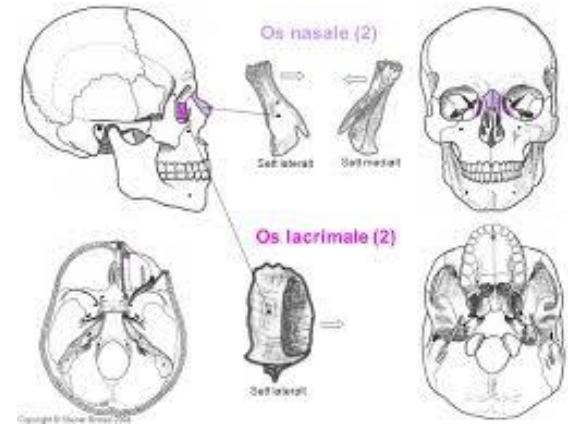
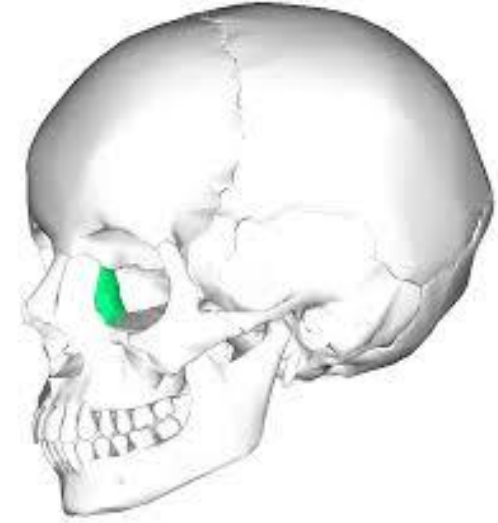
# Os Palatinum

- Sert damađın 1/3 arka bölümünü oluşturur.



# Os Lacrimale

- Orbitanın (göz çukuru) iç yan duvarının önünde yer alır.
- Çift kemiktir.



# Vomer

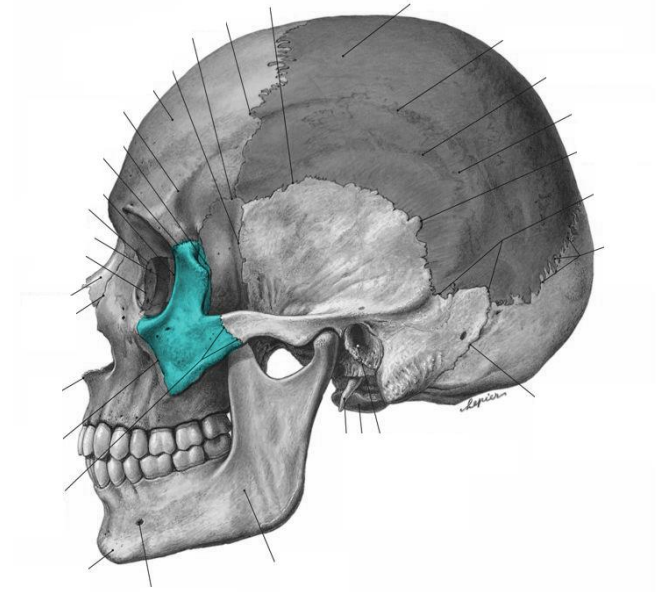
- Vomer, burun bölmesinin arka alt kısmını yapan tek kemiktir.





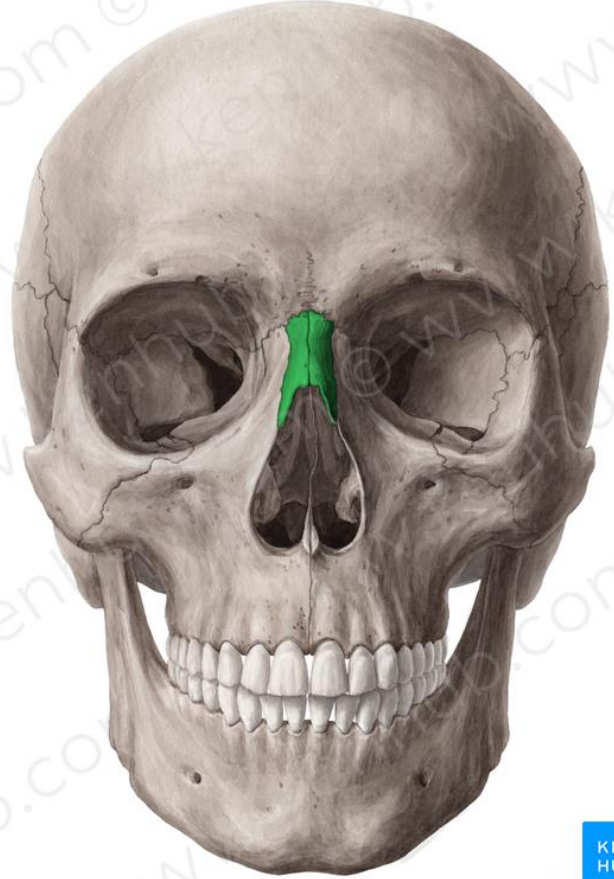
# Os Zygomaticum

- Göz çukurunun alt dış bölümünde bulunan çift kemiktir.

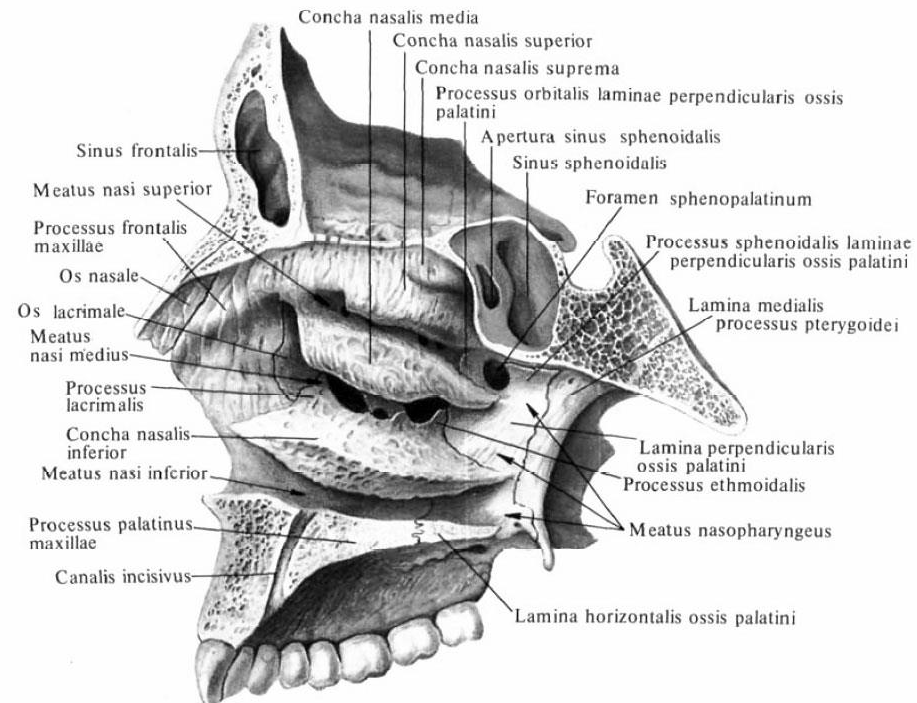


# Os Nasale

- Os nasale, burun sırtının iskeletini oluřturur.
- ift kemiktir.

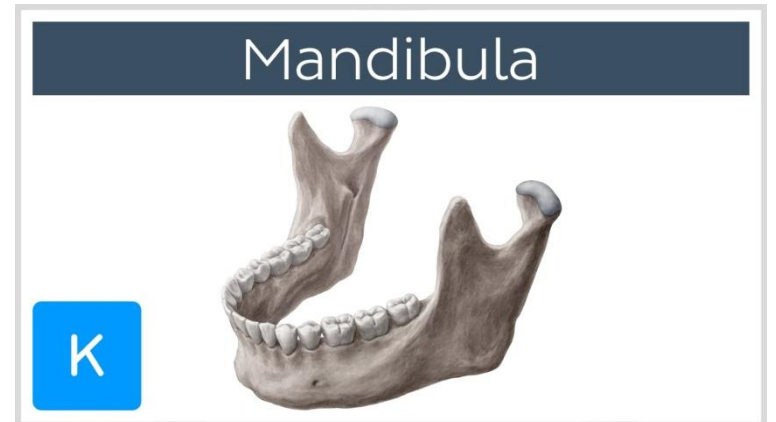
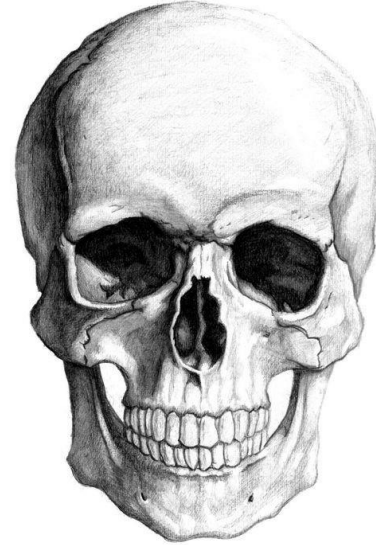


# Concha Nasalis Inferior

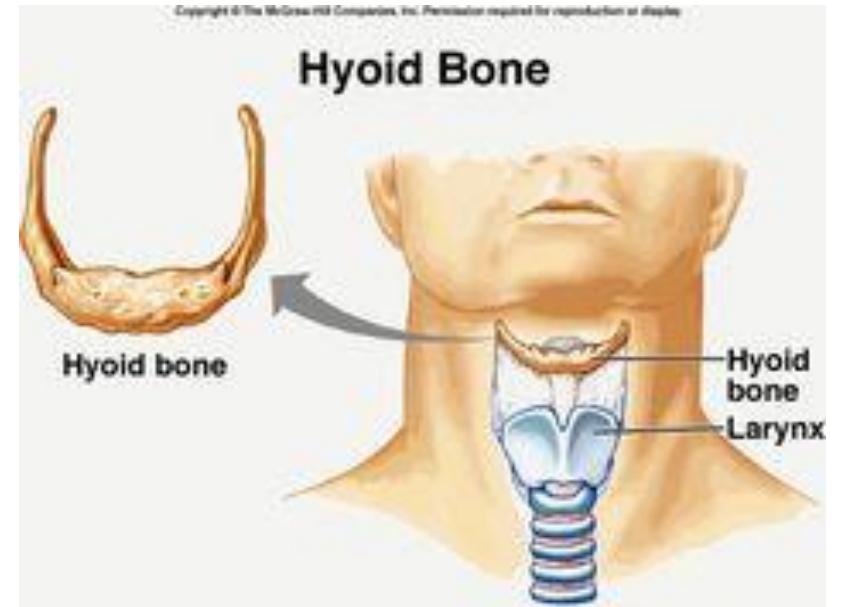


# Os Mandibula

- Mandibula, yüz iskeletinin en büyük ve en sağlam kemiğidir. Kafatası iskeletinin ise tek hareketli kemiğidir.



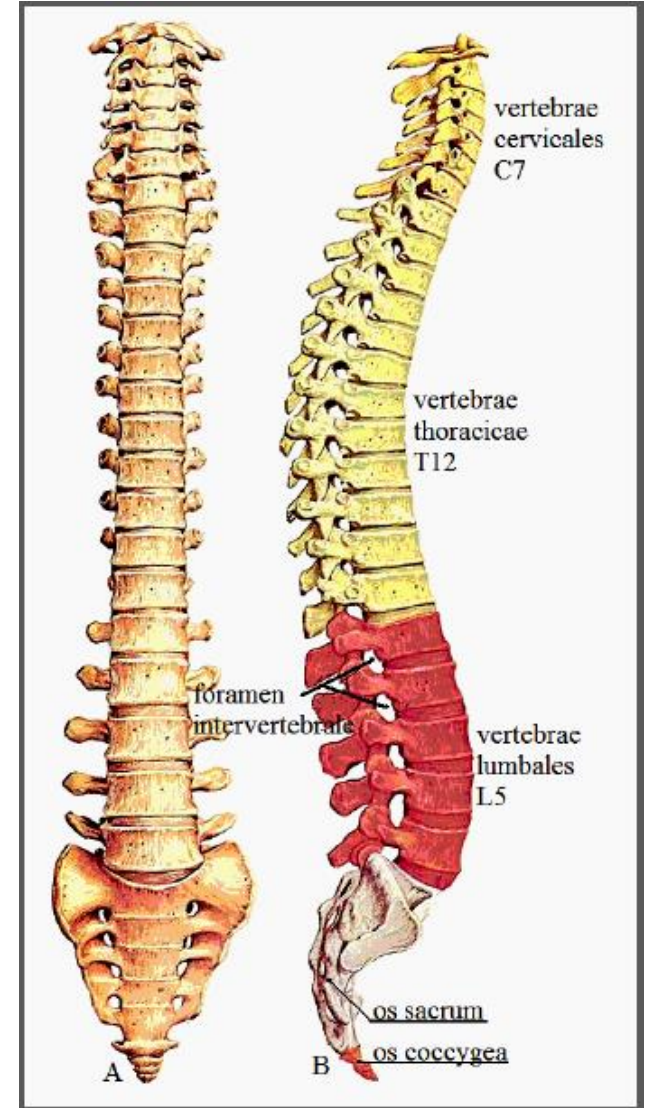
# Os Hyoideum



**COLUMNA VERTEBRALIS, COSTAE  
VE STERNUM**

# Omurga (Columna Vertebralis)

- Omurga, 33-34 omurun(vertebra) üst üste dizilmesiyle oluşmuş kemik kolondur.



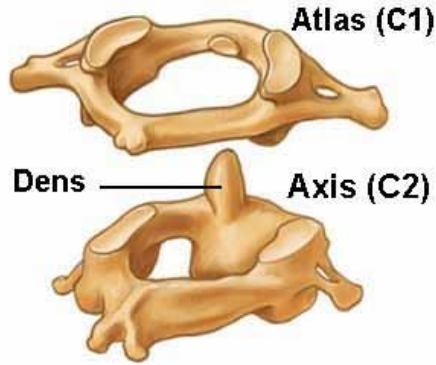
- **Vertebrae Cervicales**  
C7 omur
- **Vertebrae Thoracicae**  
T12 omur,
- **Vertebrae Lumbales**  
L5 omur,
- **Os Sacrum** S5 omur  
(yetişkinde 1 kemik)
- **Os coccygis(coccyx)** 4-  
5 omur. (yetişkinde 1  
kemik)





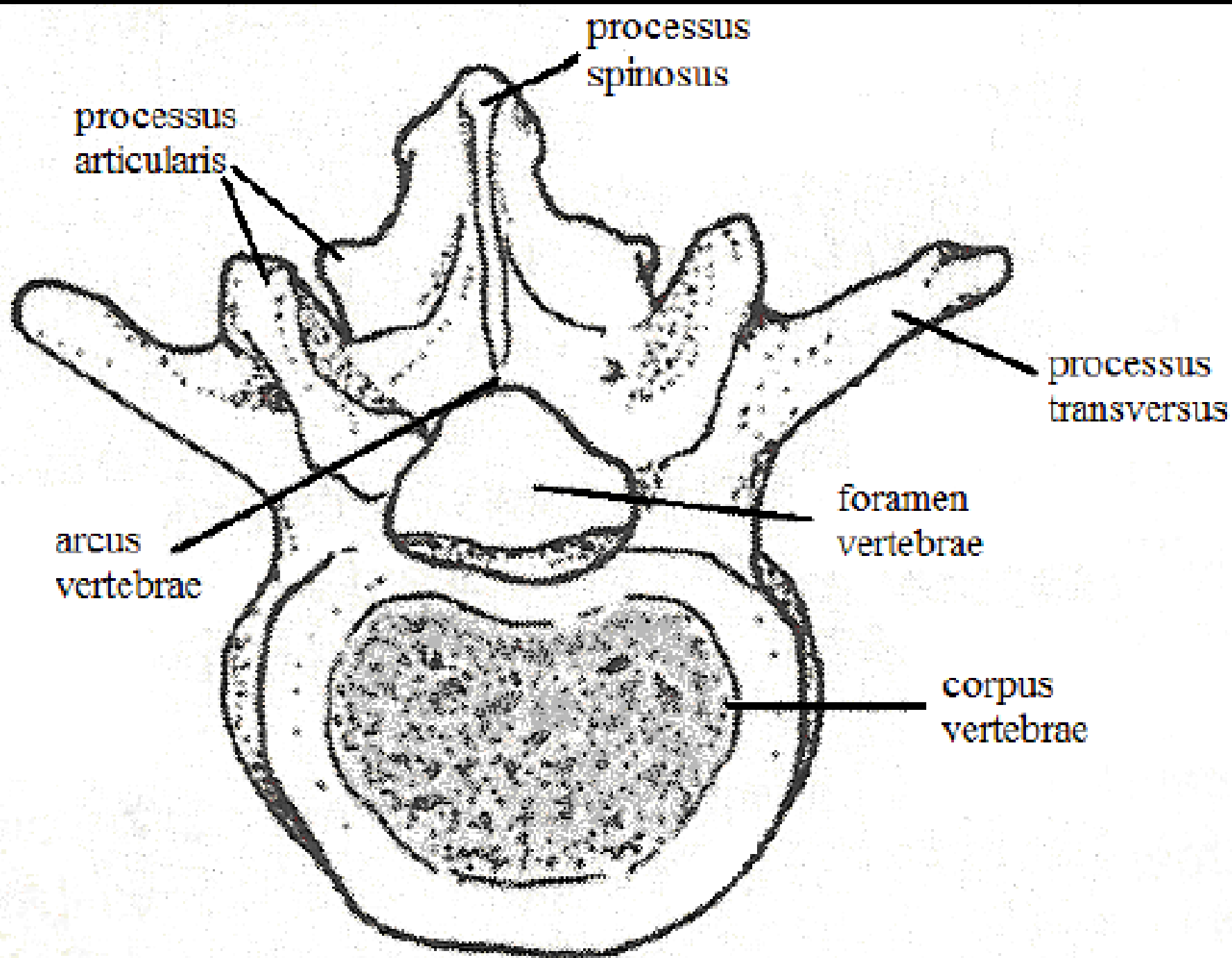
# Vertebra'ların Genel Özellikleri

- Birinci(Atlas) ve ikinci(Axis) boyun omurları ile sakrum ve koksiks omurları hariç, diğer omurlar ortak bir anatomik yapıya sahiptir.

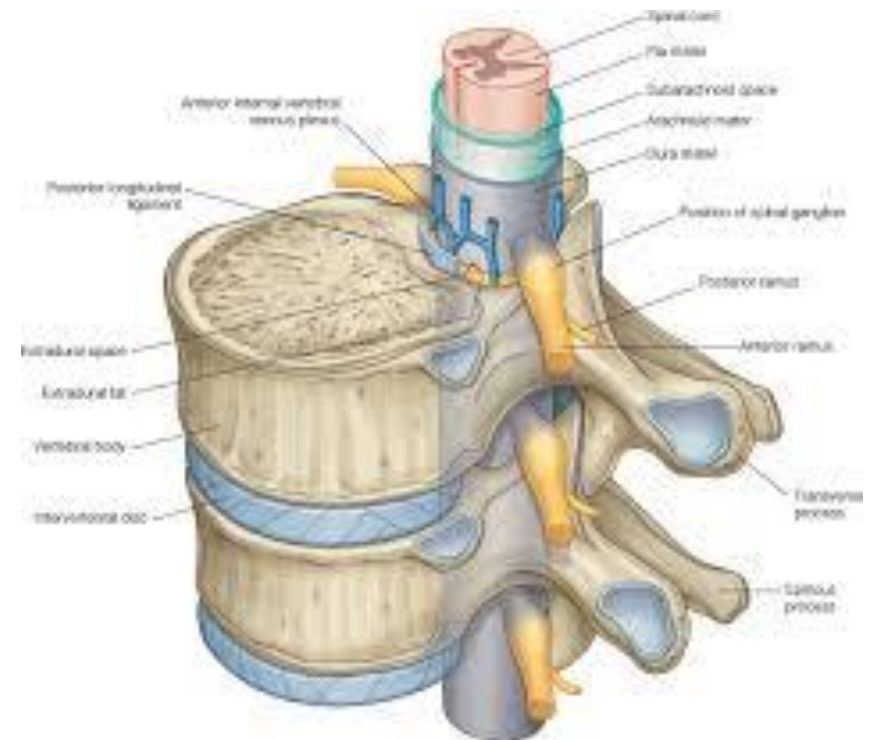


- Corpus Vertebrae:
- Arcus Vertebrae

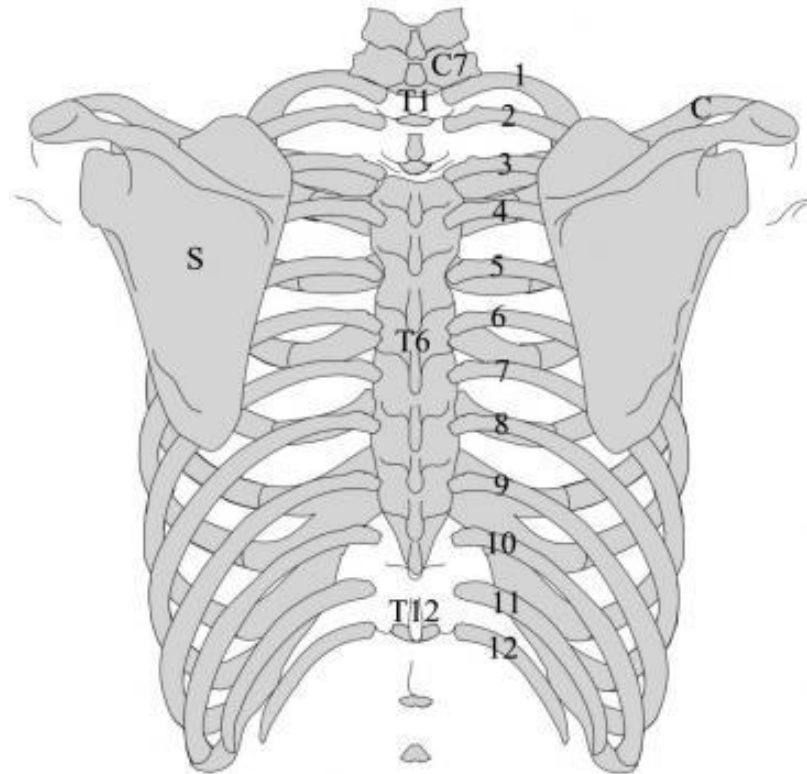
- **Processus Spinosus:**
- **Processus Transversus:**
- **Processus Articularis:**



- **Foramen Vertebrale:**
- **Canalis vertebralis**
- **Medulla Spinalis**



# Costae



# Sternum

