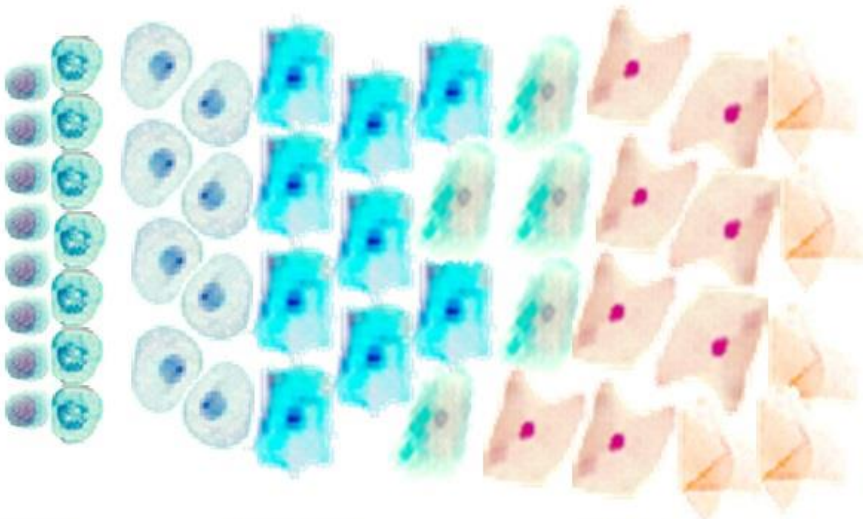


Fizyoloji

- ▶ Proöstrus 9 gün (2-22)
- ▶ Östrus 9 gün (6-12)
- ▶ Diöstrus 65 gün (55-90)

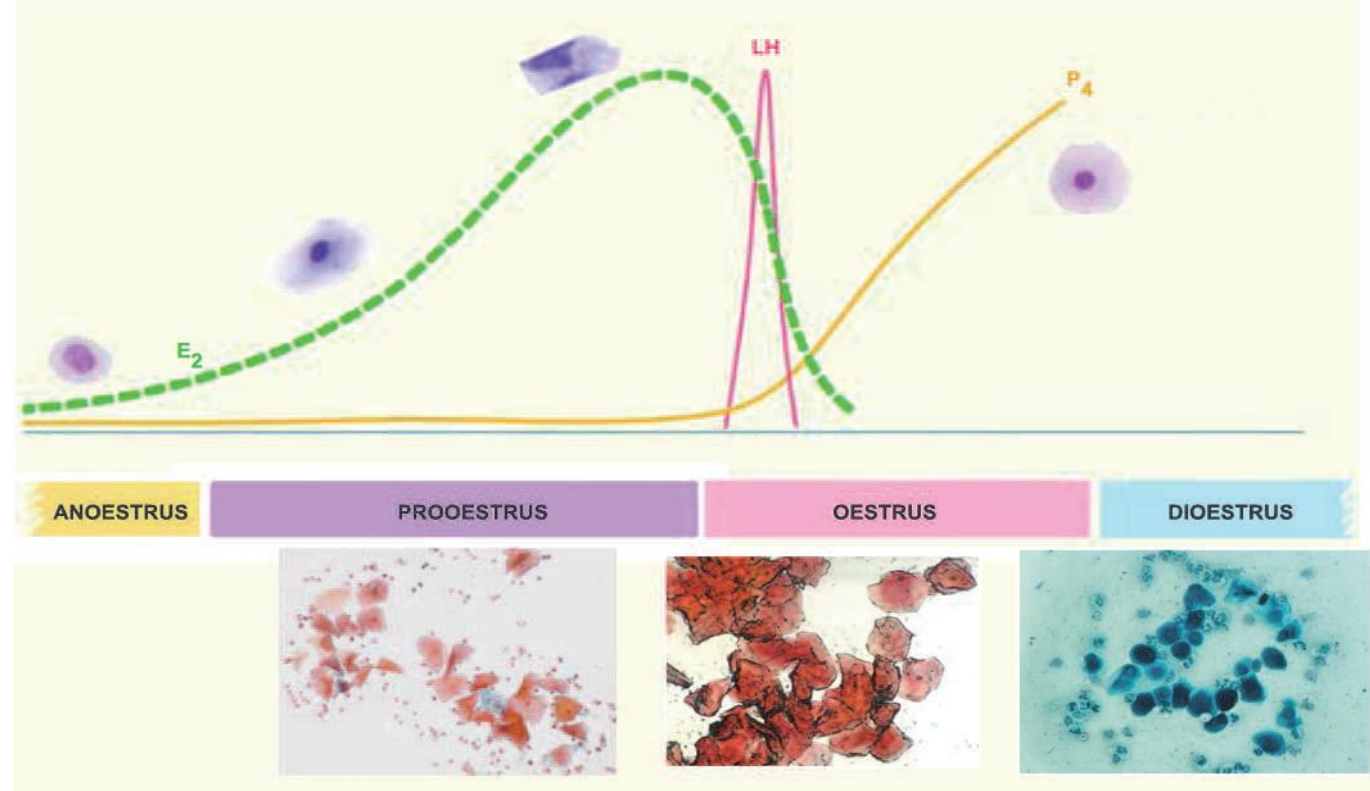
Basal membran



Anöstrus

Proöstrus

Östrus



ANOESTRUS

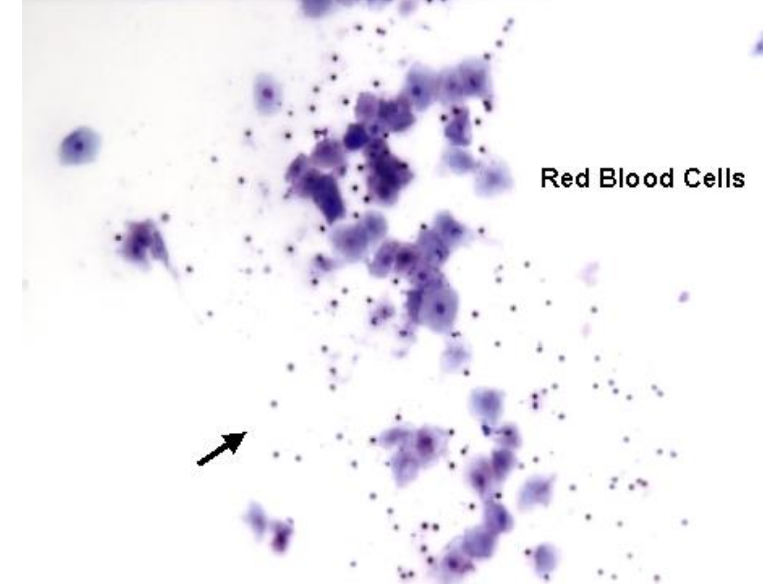
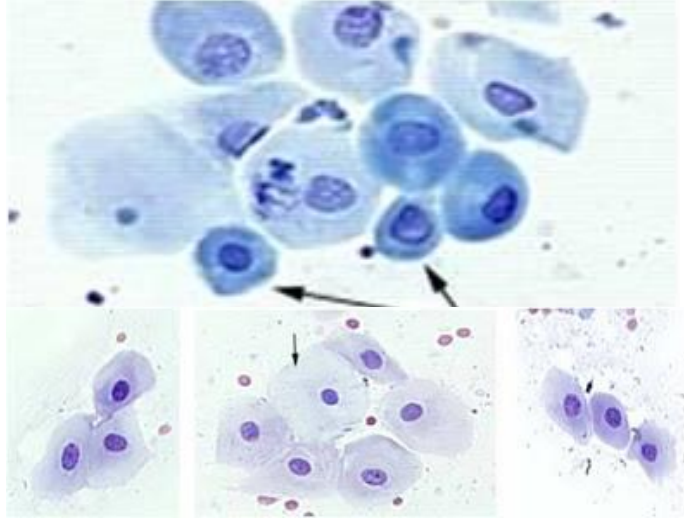
PROOESTRUS

OESTRUS

DIOESTRUS

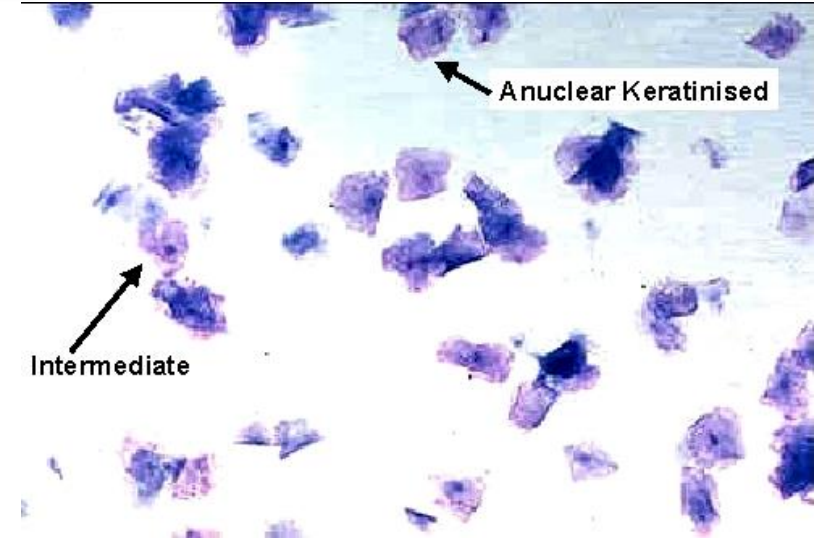
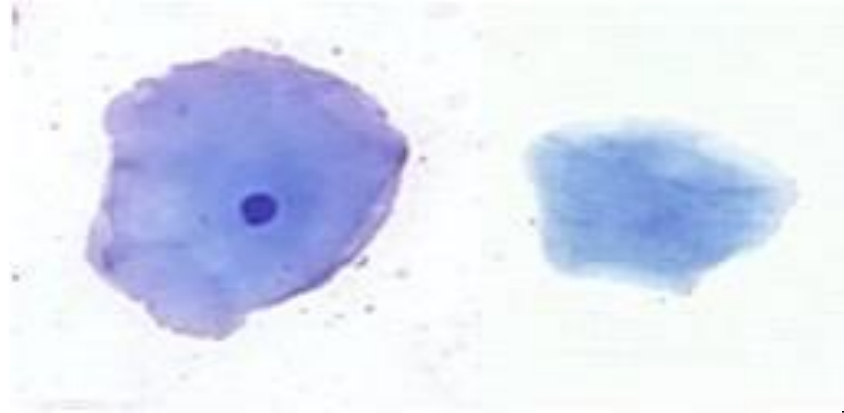
Proöstrus

- ▶ Vulvada ödem
 - ▶ Kanlı vaginal akıntı
 - ▶ Vagina anemik
 - ▶ Erğe karşı agresif
 - ▶ Vaginal sitoloji:
-
- ▶ Progesteron < 1ng/ml



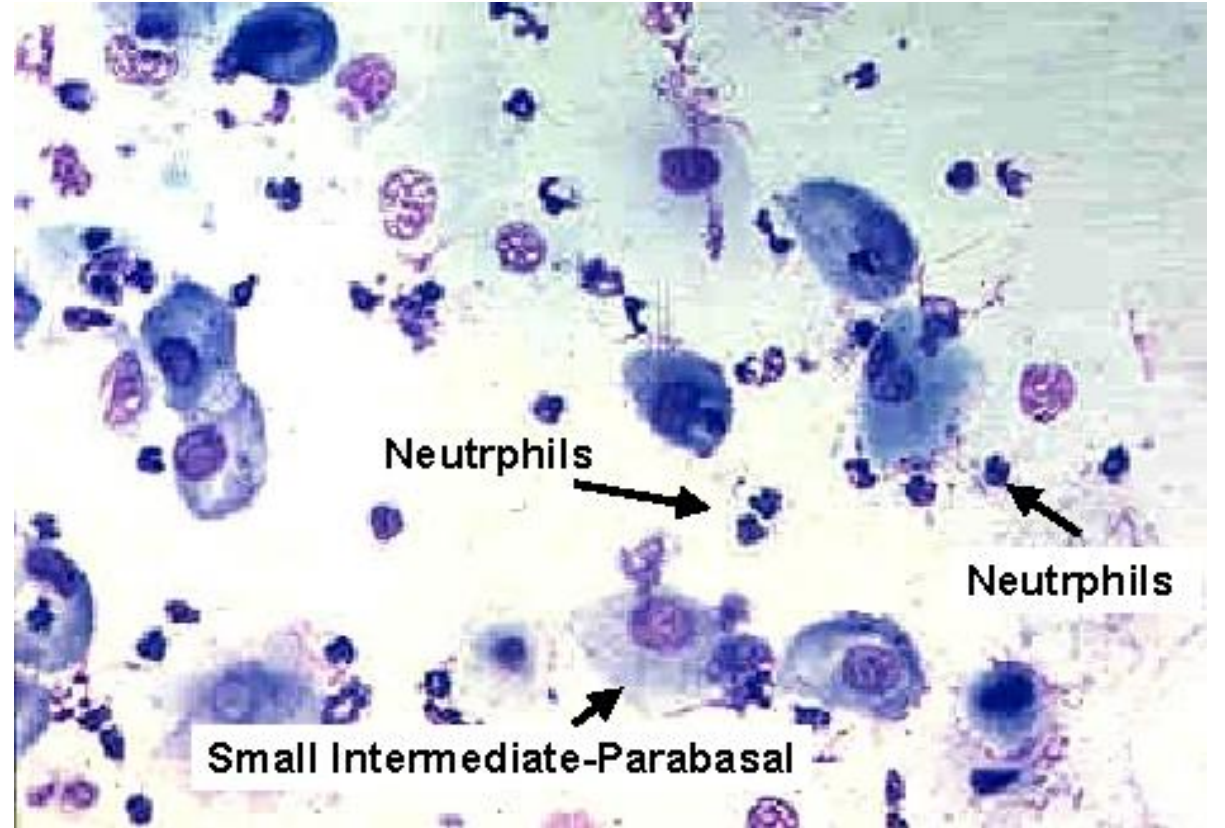
Östrus

- ▶ Vulvada ödem
 - ▶ Saman rengi akıntı
 - ▶ Vagina anemik
 - ▶ Erkeği kabul eder
 - ▶ Vaginal sitoloji:
-
- ▶ Progesteron 4-10 ng/ml



Diöstrus

- ▶ Belirtiler ortadan kalkar
- ▶ Erkek için hala çekicidir
- ▶ Progesteron 15-80 ng/ml



Anöstrus

- ▶ Seksüel dinlenme dönemi
- ▶ Progesteron < 1 ng/ml

