

Climate-Smart Cities

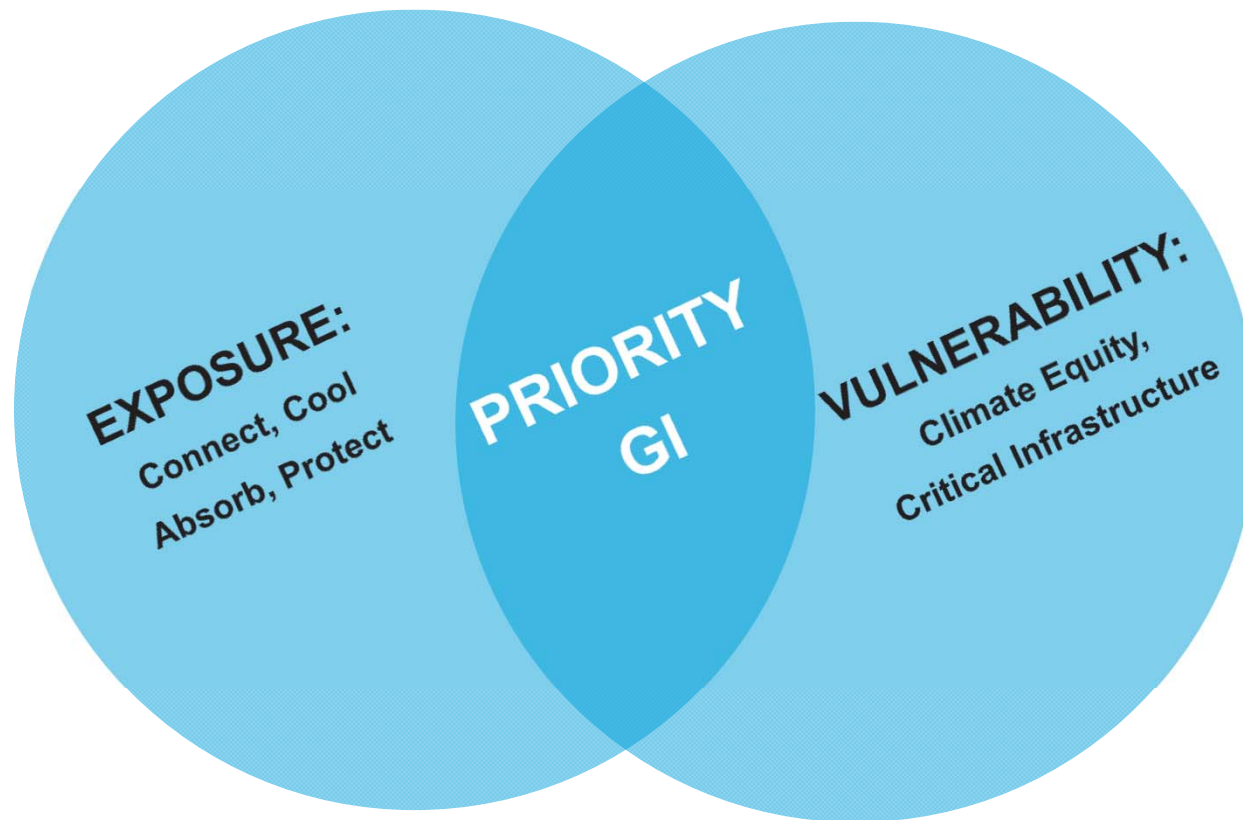
Los Angeles

October 7, 2016



Climate-Smart Cities Decision Support

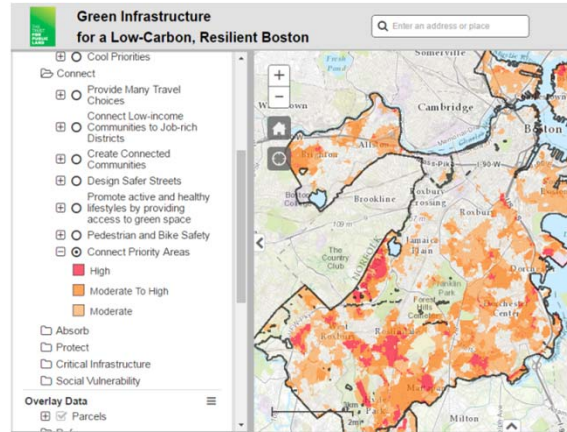
GOAL Identify priority areas for multi-benefit green infrastructure interventions with a focus on those people and places at the greatest risk to the effects of climate change.



Climate Smart Cities Implementation



Education and Advocacy



Policy and Decision Making



GI Project Development

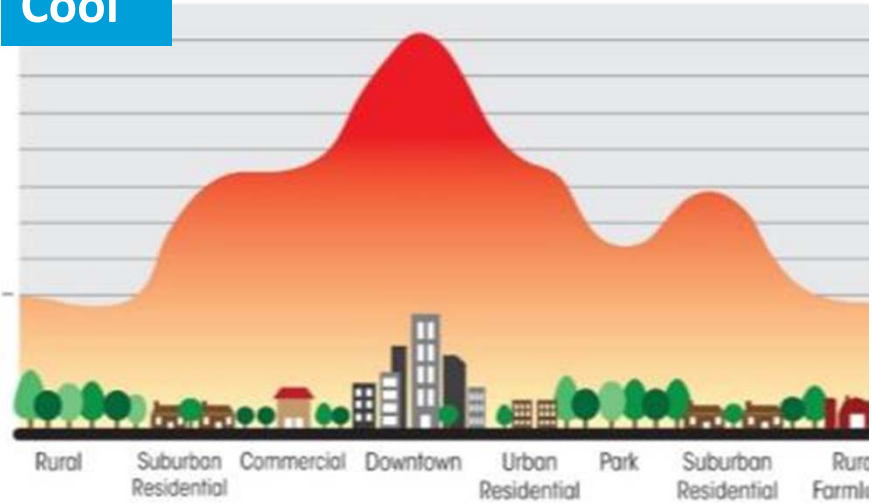


Range of Implementation Opportunities

Connect



Cool



Absorb



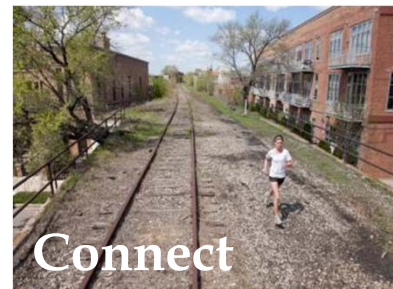
Protect



Our Climate-Smart Cities Framework



Climate Smart Cities Implementation



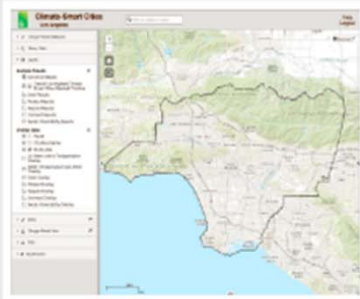
Partner Needs and Opportunities



Climate Smart Cities

Los Angeles

Climate Smart Los Angeles Portal:



Description of web portal data layers:

Web Portal Users Guide:



Through our [Climate Smart Cities](#) Program at The Trust For Public Land we help cities strategically use parks and natural lands as "green infrastructure" serving four objectives:

Connect: Trails and transit lines provide carbon-free transportation and link pedestrians and bicyclists to popular destinations and each other while leaving their car at home.

Cool: Shady green spaces reduce the urban "heat island" effect, protect people from heat waves, and reduce summer energy use.

Absorb: Water-smart parks, playgrounds, and green alleys absorb rainfall, reduce flooding, and recharge drinking water supplies while saving energy for water management.

Protect: Shoreline parks and natural lands such as wetlands buffer cities from rising seas, coastal storms, and flooding.

The Climate Smart Los Angeles project delivers on the commitment of the Trust for Public Land to assist the Mayor's Office of

LANDING PAGE



Applying Data to Decision-making

NEIGHBORHOOD CONTEXT

Create citywide or neighborhood maps identifying priorities.

SITE ANALYSIS

Review specific parcels for fit based on identified objectives.

SITE SELECTION

Query the data to identify parcels that match criteria for risk and opportunity.



Climate Smart Cities

Los Angeles

Q Enter an address or place

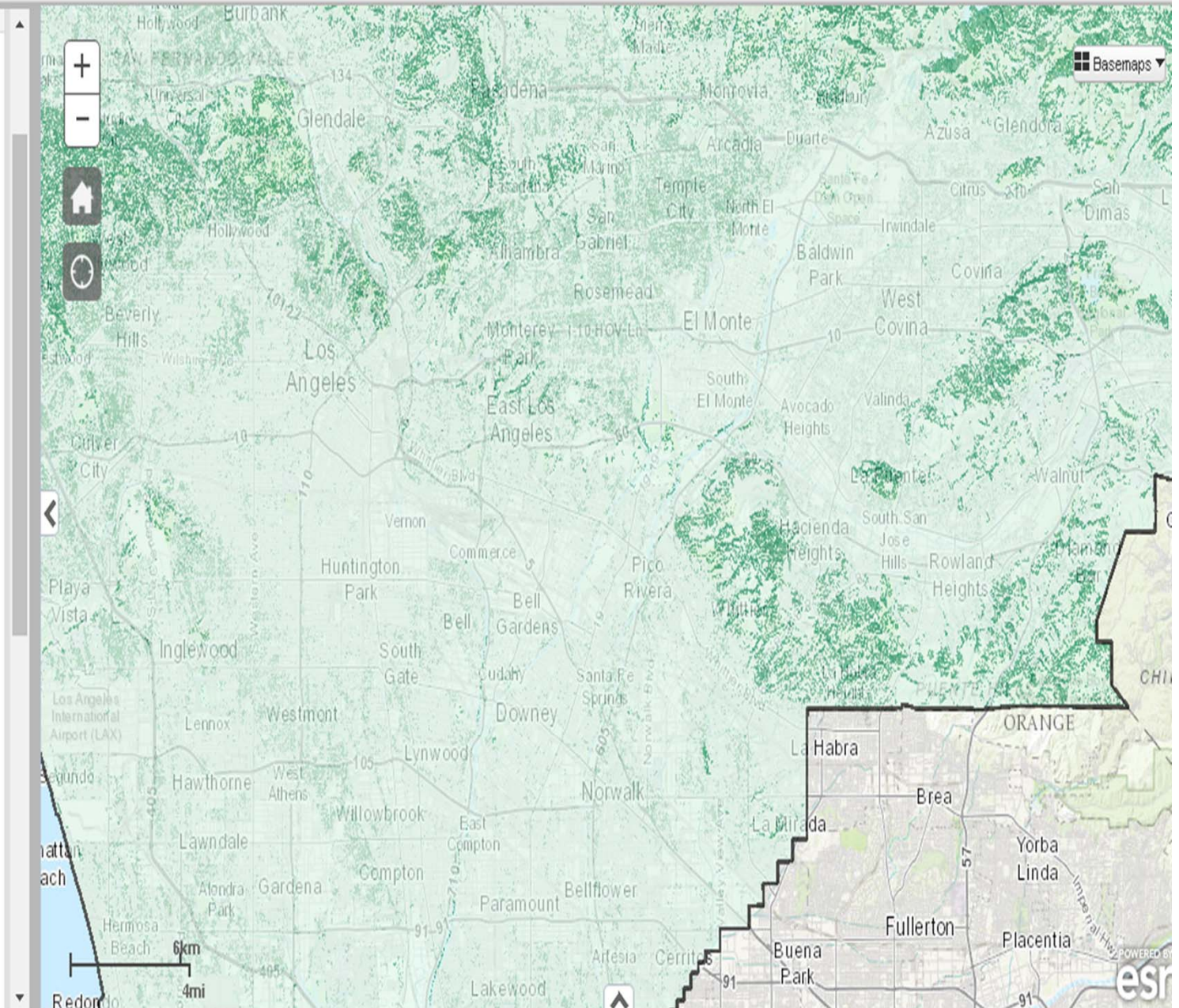
Help
Logout

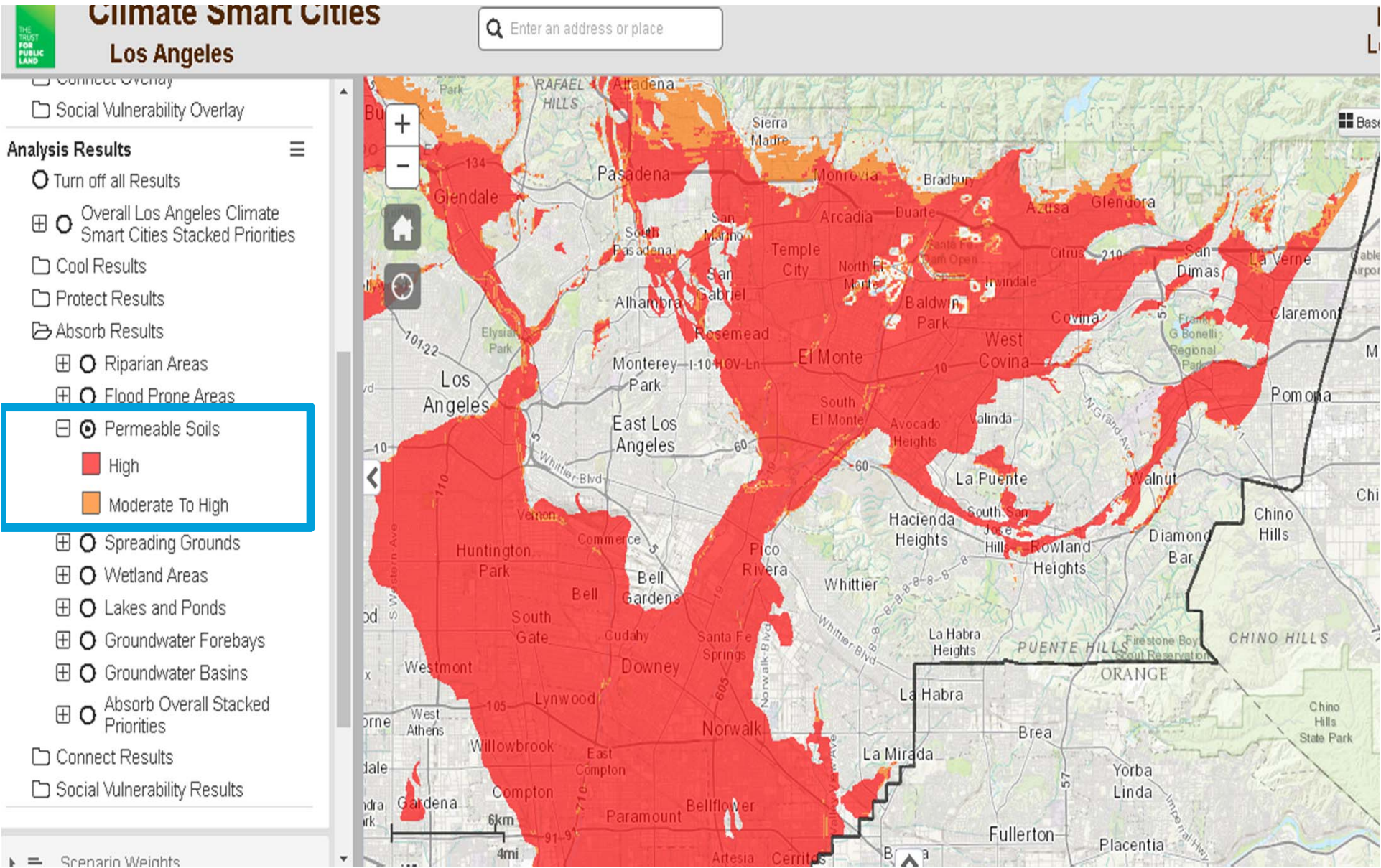
Overlay Data

- Parcel
- City Boundaries
- Study Area
- LA Metro Active Transportation Overlay
- Green Infrastructure and Other Overlay
- Parks and Open Space
- ParkScore Park Equity Results
- LA County Flood Control District ROW Parcels
- Community Gardens
- Food Deserts
- Impervious Surface
- Parking Lots
- Solar Data
- Tree Canopy
- Cool Overlay
- Protect Overlay
- Absorb Overlay
- Connect Overlay
- Social Vulnerability Overlay

Analysis Results

- Turn off all Results





**NEIGHBORHOOD
CONTEXT**

SITE ANALYSIS

SITE SELECTION





Climate Smart Cities

Los Angeles

Q Enter an address or place

Help
Logout

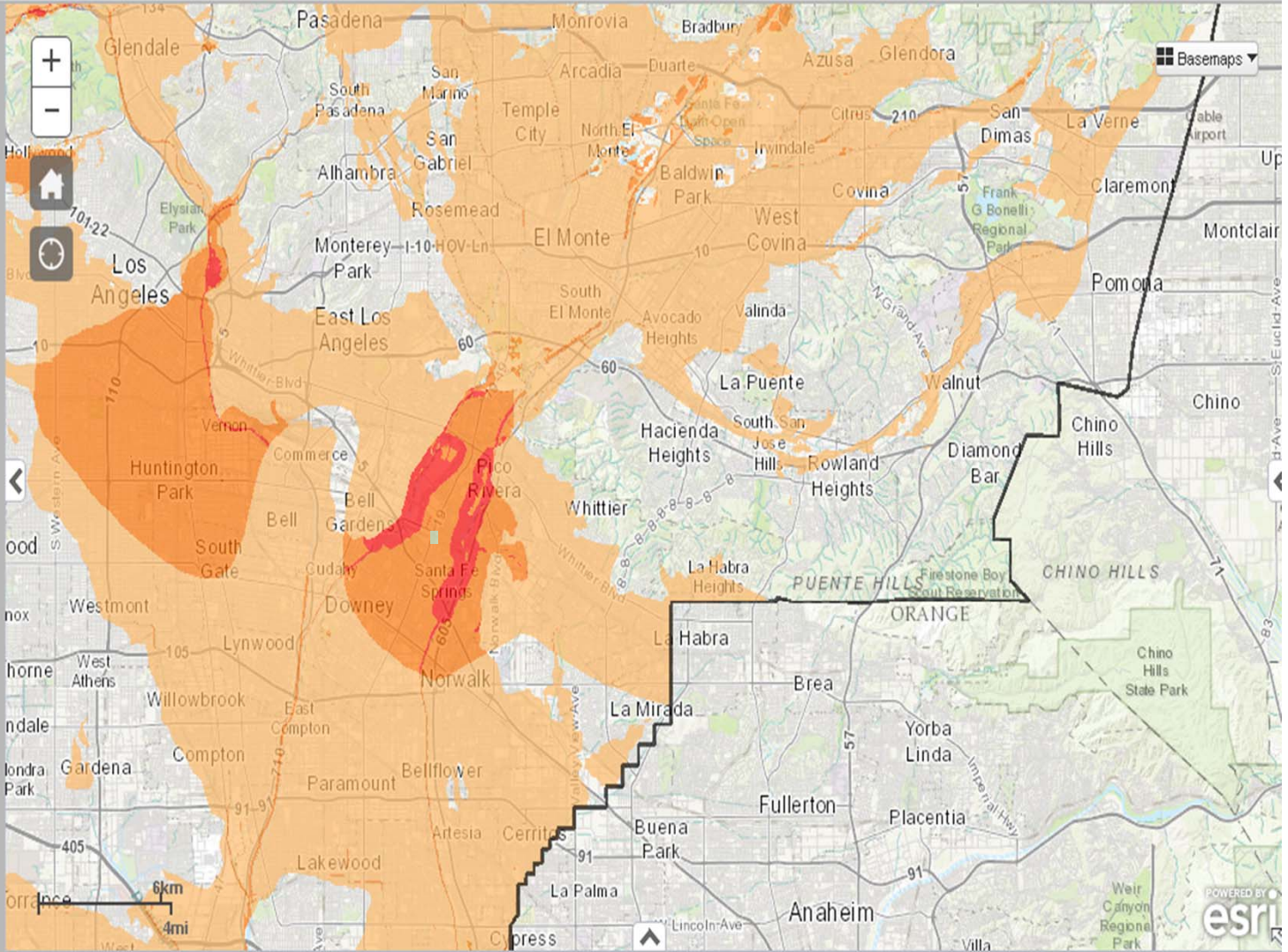
- Daytime LST Hot Spots
- Nighttime LST Hot Spots
- Cool Overall Stacked Priorities
- Protect Results
- Absorb Results
- Riparian Areas
- Flood Prone Areas
- Permeable Soils
- Spreading Grounds
- Wetland Areas
- Lakes and Ponds
- Groundwater Forebays
- Groundwater Basins

- Absorb Overall Stacked Priorities
 - High
 - Moderate To High
 - Moderate

- Connect Results
- Social Vulnerability Results

Scenario Weights

Draw



**NEIGHBORHOOD
CONTEXT**

SITE ANALYSIS

SITE SELECTION





Climate Smart Cities

Los Angeles

Enter an address or place

Group Parcel Selection

Query Data

Layers

Analysis Results

Turn off all Results

Overall Los Angeles Climate Smart Cities Stacked Priorities

High

Moderate To High

Moderate

Soil Results

Protect Results

Absorb Results

Connect Results

Social Vulnerability Results

Overlay Data

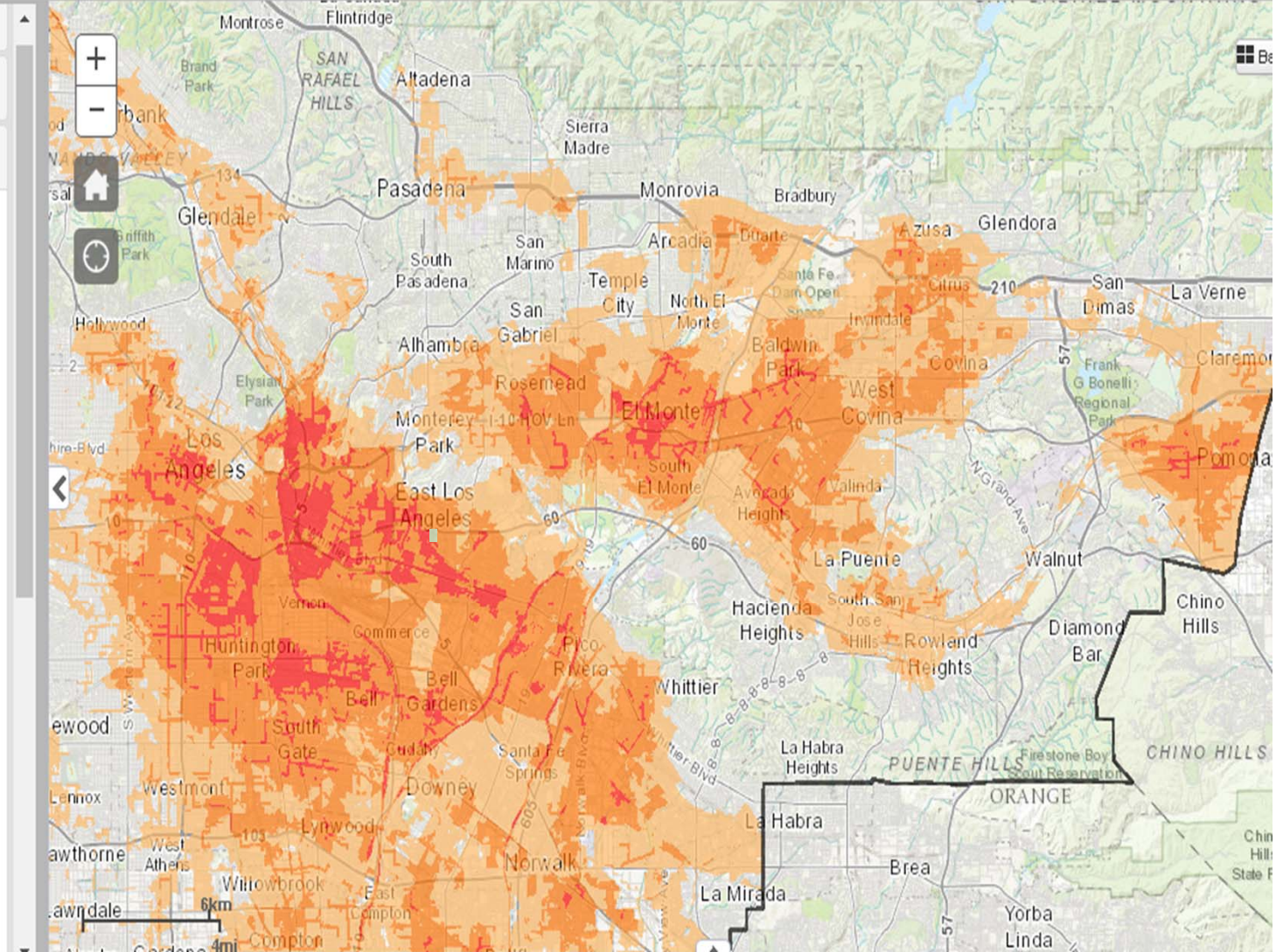
Parcel

City Boundaries

Study Area

LA Metro Active Transportation Overlay

Green Infrastructure and Other



**NEIGHBORHOOD
CONTEXT**

SITE ANALYSIS

SITE SELECTION



Layers

Overlay Data

- Parcel
- City Boundaries
- Study Area
- LA Metro Active Transportation Overlay
- Green Infrastructure and Other Overlay
- Cool Overlay
- Protect Overlay
- Absorb Overlay
- Connect Overlay
- Social Vulnerability Overlay

Analysis Results

- Turn off all Results
- Overall Los Angeles Climate Smart Cities Stacked Priorities
- Cool Results
 - Daytime LST Hot Spots
 - Nighttime LST Hot Spots
 - Cool Overall Stacked Priorities
- Protect Results

Create Parcel Profile Report

Parcel ID: **7170006900**

Owner: **LAKEWOOD CITY**

Parcel City: **Lakewood**

Address:

City:

State:

Zip Code:

Zip Plus:

Acres: **16.286965**

Criteria

Parcel Contains Overall Los	Yes
-----------------------------	------------

[Zoom to](#)

NEIGHBORHOOD
CONTEXT

SITE ANALYSIS

SITE SELECTION



Parcel Report

October 6, 2016

Page 1 of 2



Parcel ID: 7170006900 Owner: LAKEWOOD CITY Acres: 16.29
Address:

Green Infrastructure Suitability Indicators			
Canopy Cover Minimum (%): 0.00	Cal EnviroScreen Traffic Density (%): 64.86		
Canopy Cover Maximum (%): 14.00	Cal EnviroScreen Asthma: 38.38		
Canopy Cover Mean (%): 0.73	Cal EnviroScreen Asthma (%): 47.15		
Impervious Surface Minimum (%): 0.00	Cal EnviroScreen Low Birth Weight: 0.05		
Impervious Surface Maximum (%): 96.00	Cal EnviroScreen Low Birth Weight (%): 8.26		
Impervious Surface Mean (%): 28.78	Cal EnviroScreen Pollution: 44.62		
Parking Lot (sq. ft.): 74839.31	Cal EnviroScreen Pollution Score (1-10): 4.46		
Availble Solar (sq.ft.): 1475.00	Cal EnviroScreen Pollution (%): 61.11		
Cal EnviroScreen Ozone: 0.00	Cal EnviroScreen Population: 33.23		
Cal EnviroScreen Ozone (%): 8.34	Cal EnviroScreen Population Score (1-10): 3.32		
Cal EnviroScreen Particulate Matter: 14.21	Cal EnviroScreen Population (%): 22.14		
Cal EnviroScreen Particulate Matter (%): 75.14	Cal EnviroScreen Score Pct Range: 61 - 65%		
Cal EnviroScreen Toxic Releases: 9092.90	Cal EnviroScreen Score: 14.83		
Cal EnviroScreen Toxic Releases (%): 93.08	USC PERE EJ Scrn. Cum. Impact Score: 5.00		
Cal EnviroScreen Traffic Density: 1141.51	USC PERE EJ Scrn. Cum. Imp. Vuln. Ind. Score: 8.00		
Overall Stacked Priorities	Acres	Percent	Present
Stacked Priorities	6.26	38.4%	Yes
Goal: Cool	Acres	Percent	Present
Daytime Urban Heat Islands	16.29	100.0%	Yes
Nighttime Urban Heat Islands	16.29	100.0%	Yes
Cool Priority Areas	16.29	100.0%	Yes

Legend
Los Angeles Parcels



This report was created on October 6, 2016 using the Climate-Smart Los Angeles interactive mapping site. It is for

Parcel Report

October 6, 2016

Page 2 of 2



Parcel ID: 7170006900 Owner: LAKEWOOD CITY Acres: 16.29
Address:

Goal: Absorb	Acres	Percent	Present
Riparian Areas	1.72	10.6%	Yes
Flood Prone Areas	0.00	0.0%	No
Permeable Soils	16.29	100.0%	Yes
Spreading Grounds	0.00	0.0%	No
Wetland Areas	0.69	4.2%	Yes
Lakes and Ponds	0.51	3.1%	Yes
Groundwater Forebay	0.00	0.0%	No
Groundwater Basin	16.29	100.0%	Yes
Absorb Priority Areas	16.29	100.0%	Yes
Goal: Protect	Acres	Percent	Present
Coastal High Hazard Areas	0.00	0.0%	No
Projected Storm Inundation Areas	0.00	0.0%	No
Cliff Erosion Areas	0.00	0.0%	No
Shoreline Change	0.00	0.0%	No
Flood Prone Areas	0.00	0.0%	No
Protect Priority Areas	0.00	0.0%	No
Goal: Connect	Acres	Percent	Present
Connect Low-Income Communities to Job-Rich Districts	6.26	38.4%	Yes
Connect Low-income Communities to Shopping Centers and Medical Facilities	6.26	38.4%	Yes
Connect Low-income Communities to High Quality Transit	0.00	0.0%	No
Connect High Bike/Walk Communities to Job-Rich Districts	0.00	0.0%	No
Connect High Bike/Walk Communities to Shopping Centers and Medical Facilities	0.00	0.0%	No
Connect to the LA River Sustainable River Revitalization Projects	0.00	0.0%	No
Provide Access to Public Schools	15.30	93.9%	Yes
Provide Access to Colleges and Universities	1.17	7.2%	Yes
First Last Mile Walkable Areas	16.29	100.0%	Yes
Critical Infrastructure Priority Areas	6.26	38.4%	Yes
Goal: Social Vulnerability	Acres	Percent	Present
Populations with People of Color	0.00	0.0%	No
Low-Income Populations	0.00	0.0%	No
Populations with Less than High School Diploma	0.00	0.0%	No
Populations with Linguistic Isolation	0.00	0.0%	No
Populations under 5	0.00	0.0%	No
Populations over 64	0.00	0.0%	No
Populations with Unemployment	16.29	100.0%	Yes
Populations with Asthma	0.00	0.0%	No
Populations with Low Birth Weight	0.00	0.0%	No
Social Vulnerability Priorities	0.00	0.0%	No

Thank you!
Questions:
fernando.cazares@tpl.org

